

The background is a complex marbled pattern. It features large, irregular shapes in shades of blue, grey, and red, with intricate, vein-like details. The colors are rich and saturated, creating a visually busy and textured effect.

nicolette mayer

JEWEL MODERN  
WALLPAPER & FABRIC



# nicolette mayer

© Nicolette Mayer 2016

THE NICOLETTE MAYER COLLECTION WAS FOUNDED BY HUSBAND AND WIFE NICOLETTE MAYER AND JONATHAN OSTROW WHO SHARE A LOVE FOR TIMELESS YET CHIC MODERN DESIGN. BOTH WITH BACKGROUNDS IN FASHION, FURNITURE, FABRICS AND PRODUCT DESIGN, THE DESIGN DUO COLLECTION OF HOME WALLPAPERS THAT ARE WORLD'S MOST DISCERNING THEIR CLIENTS. AN AWARD-OFTEN FEATURED IN ELLE DIGEST, HOUSE BEAUTIFUL, COUNTRY HOUSE MAGAZINE, WALL STREET JOURNAL IDEAS, AMONG OTHERS, THE AMONG THE TOP EXCLUSIVE MADE IN THE U.K. AND U.S., MANUFACTURES AND TOP YEAR, THE NICOLETTE MAYER COLLECTION OF JEWEL-TONED RICH MODERN GEOMETRICS THAT ARE FAR FROM THE ORDINARY. JEWELS COLLECTION ADDS DEEP, RICH, LUSH, ACIDY, RICH MODERN TONES TO OUR GROWING GROUP OF PATTERNS, EACH ON-TREND AND YET TIMELESS.



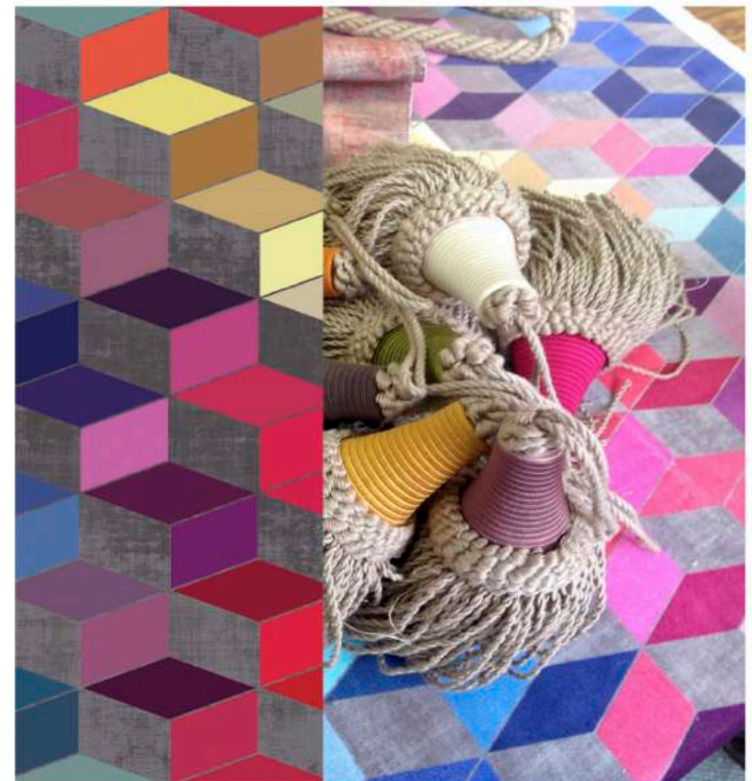
BEGAN TO CREATE A DÉCOR FABRICS AND CELEBRATED AMONG THE INTERIOR DESIGNERS AND WINNING BRAND THAT IS DÉCOR, ARCHITECTURAL, TRADITIONAL HOME, LUXE INTERIORS & DESIGN, HOT LIST, MARIE CLAIRE BRAND HAS DISTRIBUTION INTERNATIONAL EDEITEURS. USING THE BEST QUALITY MATERIALS, THIS BRAND LAUNCHED A

*"On history by training, I approach design utilizing both aesthetic passion and a sense of adventure into fantasy..."*

*Nicolette Mayer*

THE JEWEL COLLECTION UTILIZES TIMELESS JEWEL TONES ON METALLIC GRASSCLOTH WALLCOVERING, THE MOST LUXURIOUS NATURAL TEXTURED AND SPECIALTY WALLCOVERING IN THE WORLD. OUR TEXTILES INCLUDING VELVETS ARE UNIQUE TO THE MARKET, WITH AGED, NUANCED, RICH COLOR WITH VINTAGE APPEAL AND ULTRA-SOFT HAND. CRAFTED OF PURE COTTON VELVET, ITS RICH FOLDS, SUBTLE SHEEN AND COMPLEX CHARACTER CONFER ELEGANCE AND SOPHISTICATION. OUR SPECIALIZED TECHNIQUES CREATE AGING, DEPTH OF COLOR, AND TEXTURE THAT CAN ONLY BE ACHIEVED WITH OUR SPECIALIZED TECHNOLOGY.

STARTING IT OFF, STILLIFE VINTAGE IS INSPIRED BY THE THEMES OF BEAUTY AND DEATH IN STILLIFE PAINTING OF THE 1600'S, WHERE CUT BLOOMS ARE DEPICTED AT THEIR PEAK, YET THE PERFECTION SIGNALS THE FLOWERS' IMMINENT FADING. CAPTURING THAT RICHNESS AND PERFECTION AND KEEPING IT PRESERVED FOR ALL TIME, IS THE JOY OF STILLIFE VINTAGE. OUR PRINT HAS A UNIQUE AGED QUALITY WITH A NUANCED VINTAGE TECHNIQUE THAT HIGHLIGHTS THE FLOWERS IN GLISTENING LIGHT AND A VELVETY ATMOSPHERE. STILLIFE REPLICATES THE FEELING OF THE 16TH AND 17TH-CENTURY ART, BUT IS ALSO VERY MODERN AND EDGY, REFERENCING THE MODERN PHOTOGRAPHERS LIKE BAS MEEUWS, THAT REPLICATE STILLIFE ART IN PHOTOGRAPHS, USING NEW TWISTS TO THE TRADITIONAL MUCH LIKE WE DO WITH OUR ADVANCED DIGITAL TECHNOLOGY IN TEXTILE AND WALLPAPER PRINTING. ANOTHER STILL LIFE PATTERN, IS GUERLIN, IN BLACKS AND SUBTLE BERRY COLORS. STUNNING! AGATE IS A GEMSTONE PATTERN CHARACTERIZED BY ITS FINENESS, RICH MOVEMENT AND BRIGHTNESS OF COLOR. MODERN STEPS IS A FUN, NUANCED GEOMETRIC THAT PAIRS SO WELL WITH POP ART, A MODERN STRIPE, AS DOES TURNING, A PATTERN WITH MODERN GEOMETRIC CIRCLES, WATER STAINING EFFECTS AND FUN YET SUBTLE MOVEMENT.



NICOLETTEMAYER

Nicolette Mayer Collection, Inc. 3750 NE 6th Drive Boca Raton FL 33431 United States +15612416906 info@nicolettemayer.com

NICOLETTEMAYER  
COLLECTION







TRADITIONAL HOME



Photo courtesy  
Traditional Home Magazine

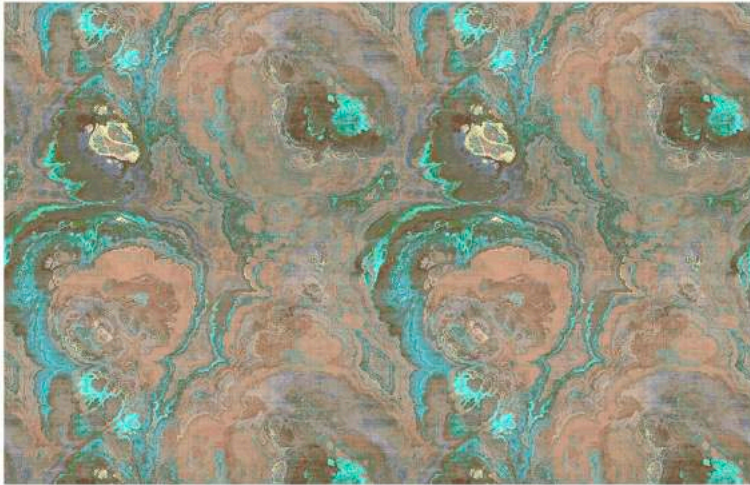




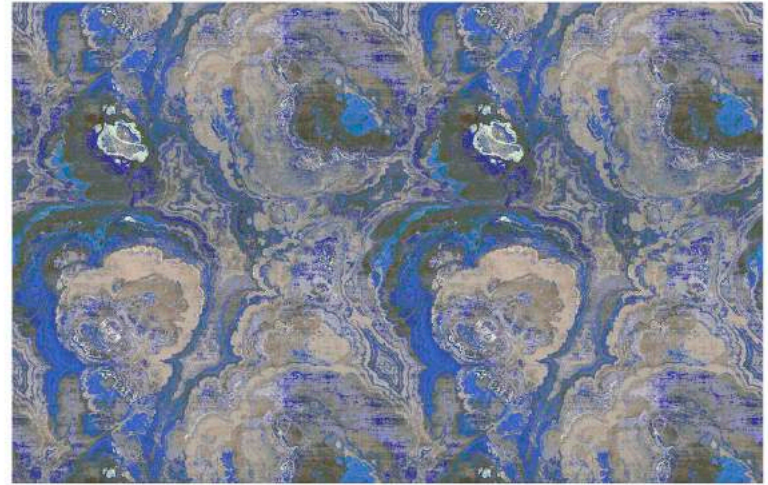


AGATE





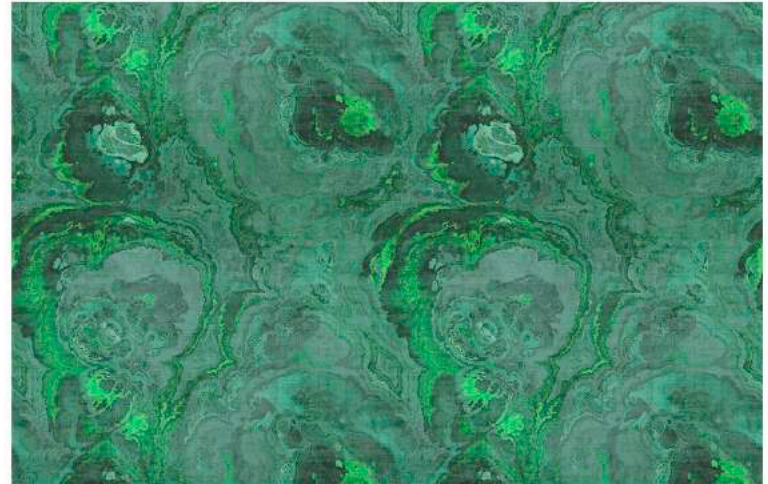
NICOLETTE MAYER COLLECTION  
DESIGN NAME: AGATE  
COLOR: CLAY



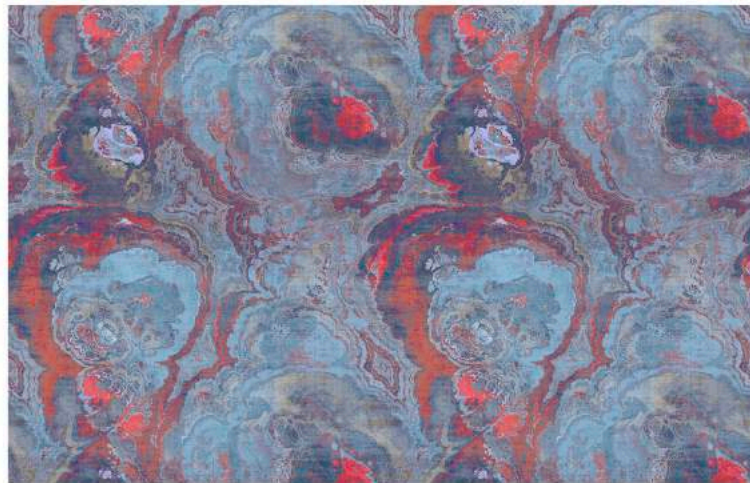
NICOLETTE MAYER COLLECTION  
DESIGN NAME: AGATE  
COLOR: SODALITE



NICOLETTE MAYER COLLECTION  
DESIGN NAME: AGATE  
COLOR: ROCCOCO

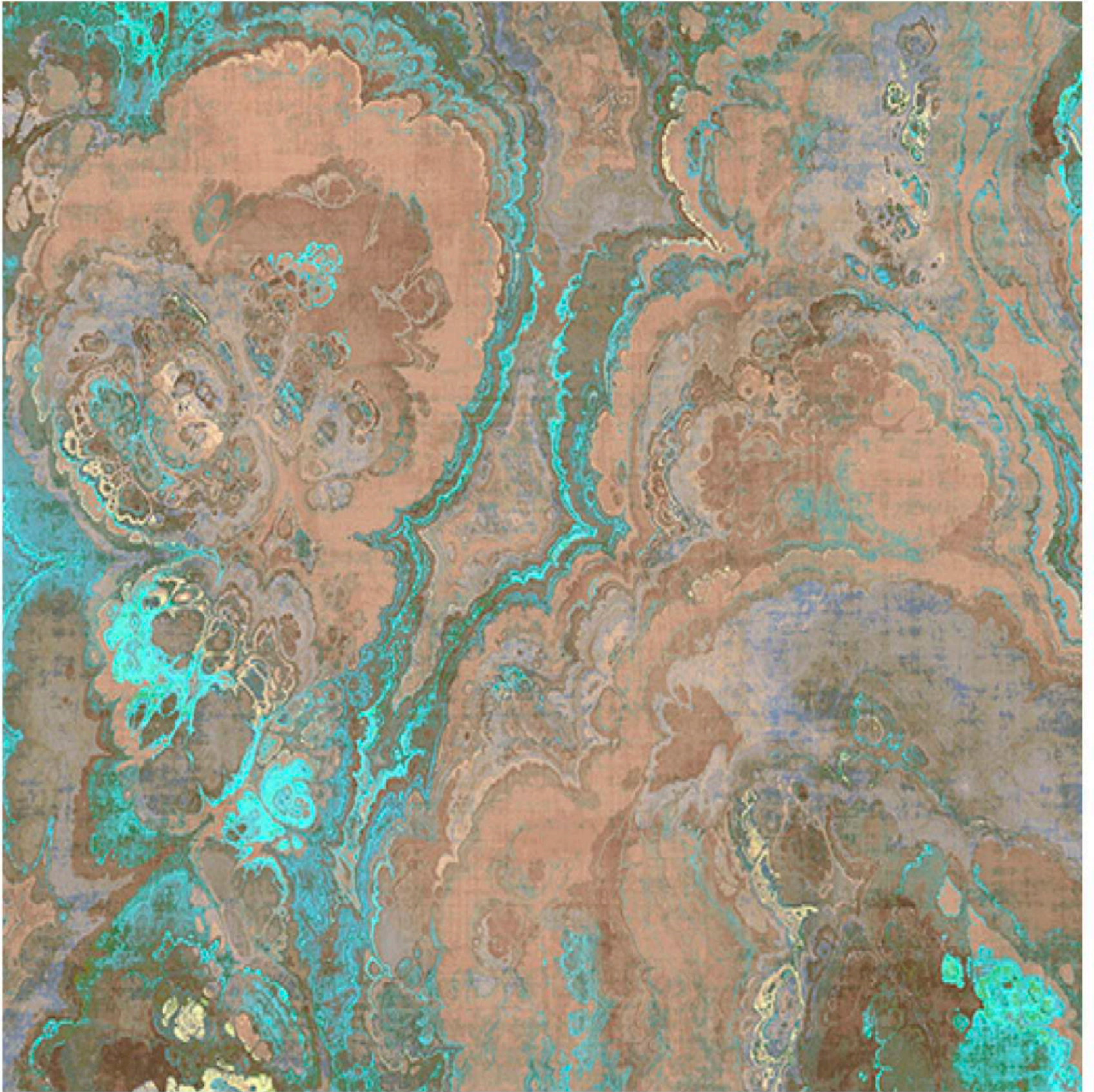


NICOLETTE MAYER COLLECTION  
DESIGN NAME: AGATE  
COLOR: MALACHITE



NICOLETTE MAYER COLLECTION  
DESIGN NAME: AGATE  
COLOR: LAVA







nicolette mayer

**NICOLETTE MAYER COLLECTION**

**DESIGN NAME:** AGATE

**COLOR:** CLAY

**DESIGN NUMBER:**

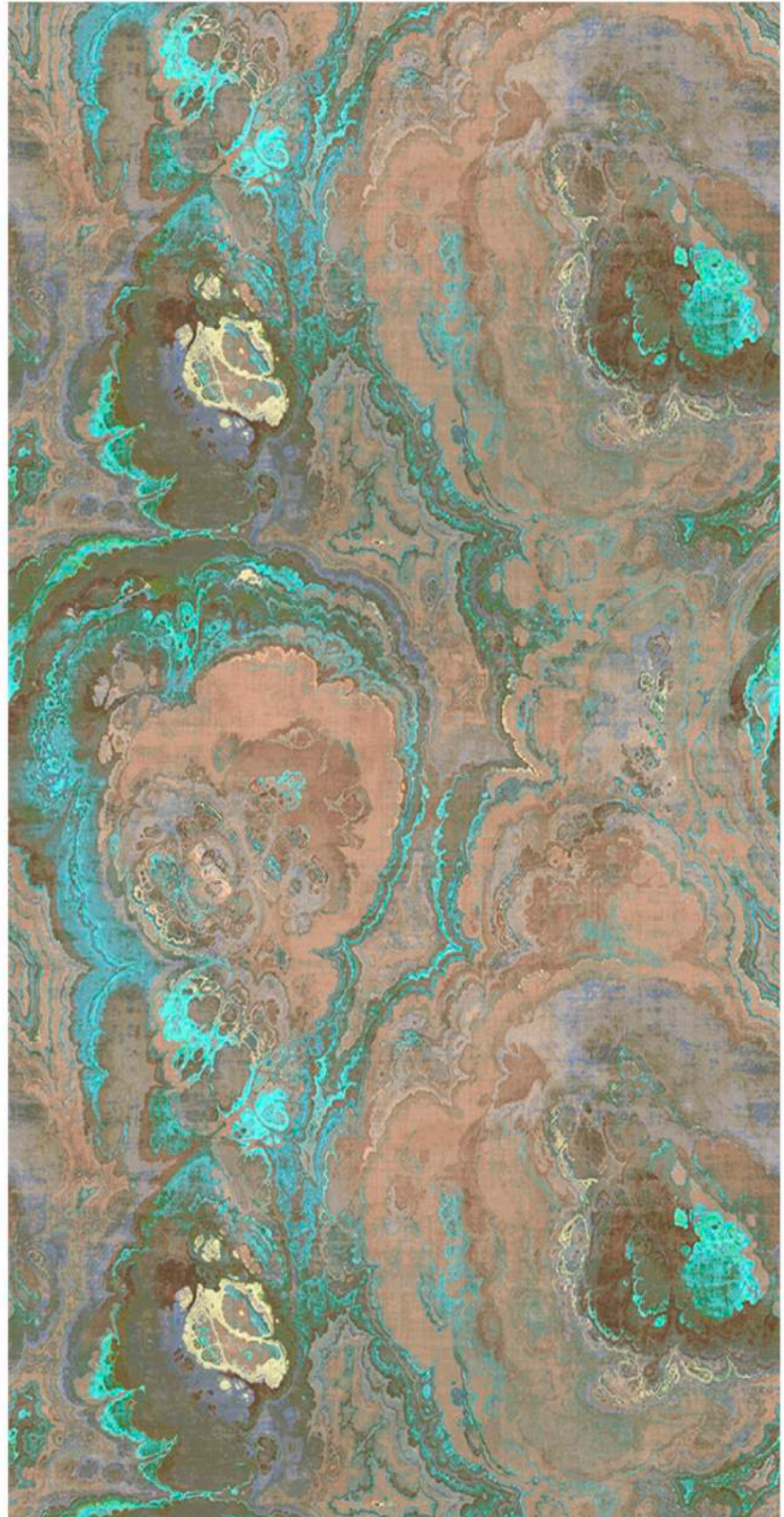
**ROLL SIZE:** 34" W X 8 YARDS / 86 cm X 7.3 m

**REPEAT:** 34" / 86 cm HIGH FULL REPEAT SHOWN

GRASSCLOTH ON PAPER

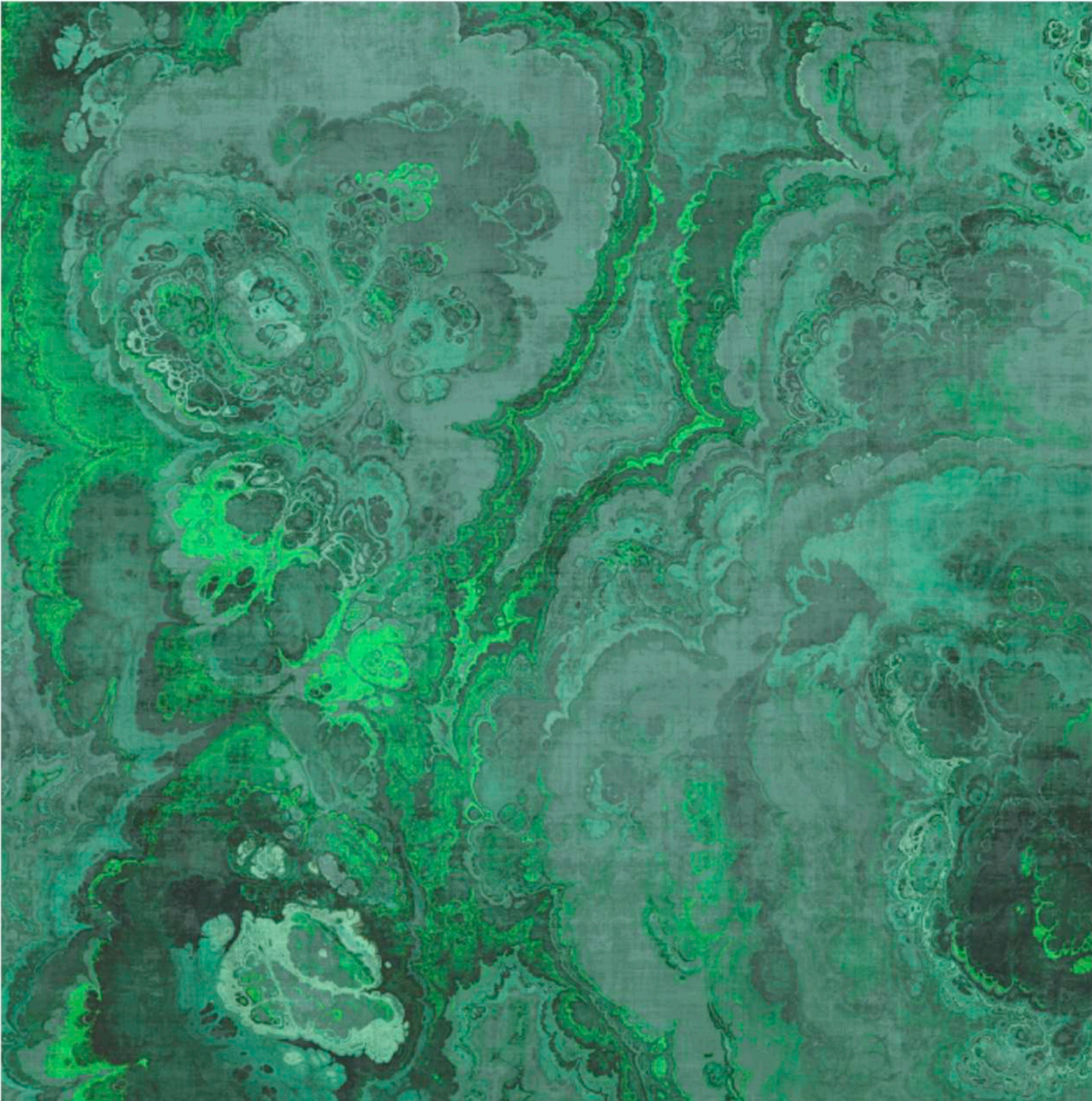
"Inspiration is the organic beauty of each facet of crystallized rock, the richness and depth and the almost wild mix of color through historical accident and compression of time and gravity. Each piece is endlessly fascinating and precious. Our Agate pattern also has that magical balance of the art of marbled paper, used in antique books, which I collect through old books and paper snippets as I travel in antique and flea markets."

*-Nicolette Mayer*



36"







nicolette mayer

**NICOLETTE MAYER COLLECTION**

**DESIGN NAME:** AGATE

**COLOR:** MALACHITE

**DESIGN NUMBER:**

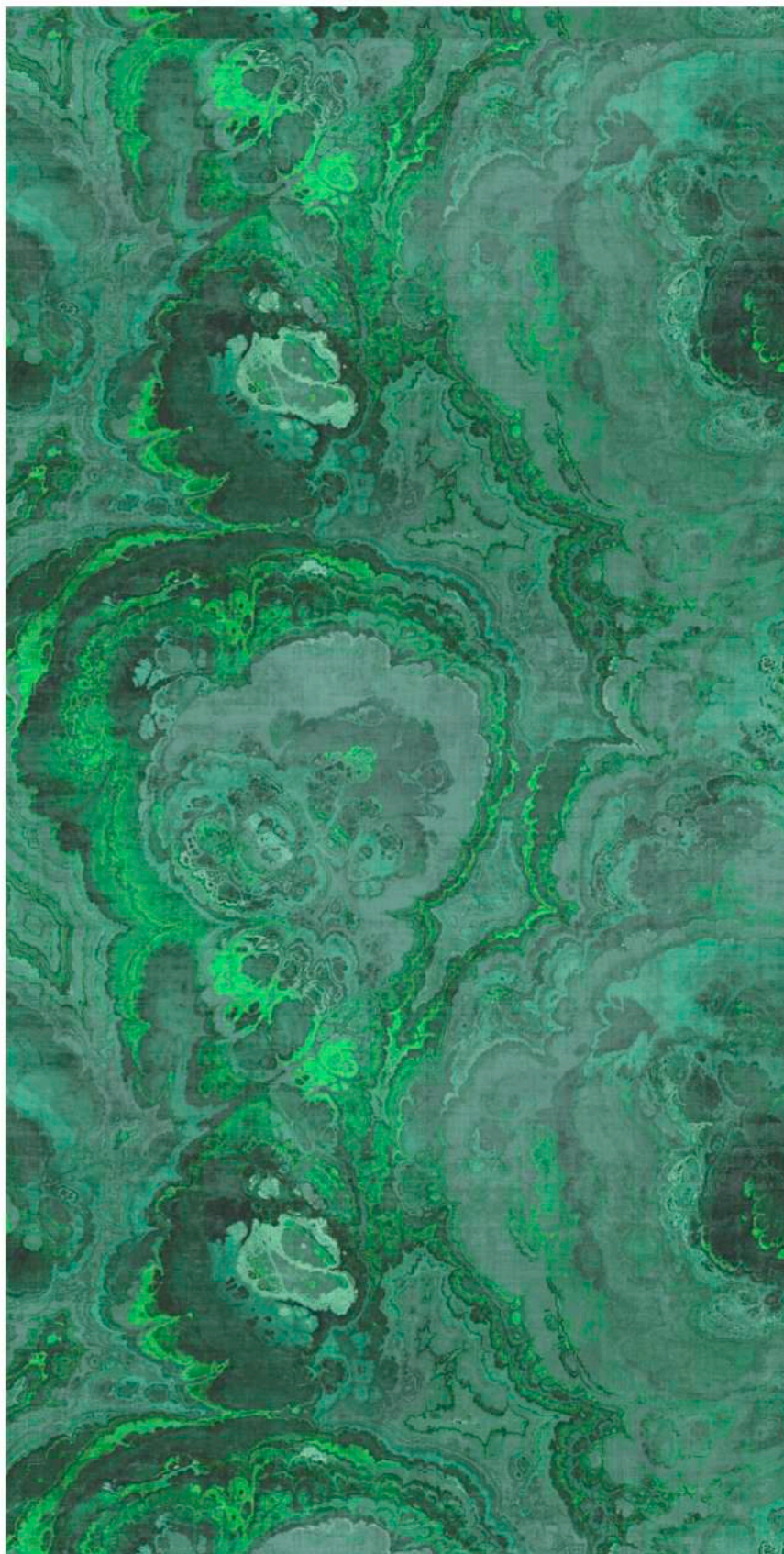
**ROLL SIZE:** 34" W X 8 YARDS / 86 cm X 7.3 m

**REPEAT:** 34" / 86 cm HIGH FULL REPEAT SHOWN

GRASSCLOTH ON PAPER

"Inspiration is the organic beauty of each facet of crystallized rock, the richness and depth and the almost wild mix of color through historical accident and compression of time and gravity. Each piece is endlessly fascinating and precious. Our Agate pattern also has that magical balance of the art of marbled paper, used in antique books, which I collect through old books and paper snippets as I travel in antique and flea markets."

*-Nicolette Mayer*



36"







# nicolette mayer

## **NICOLETTE MAYER COLLECTION**

**DESIGN NAME:** AGATE

**COLOR:** ROCOCO

**DESIGN NUMBER:**

**ROLL SIZE:** 34" W X 8 YARDS / 86 cm X 7.3 m

**REPEAT:** 34" / 86 cm HIGH FULL REPEAT SHOWN

GRASSCLOTH ON PAPER

"Inspiration is the organic beauty of each facet of crystallized rock, the richness and depth and the almost wild mix of color through historical accident and compression of time and gravity. Each piece is endlessly fascinating and precious. Our Agate pattern also has that magical balance of the art of marbled paper, used in antique books, which I collect through old books and paper snippets as I travel in antique and flea markets."

*-Nicolette Mayer*



36"

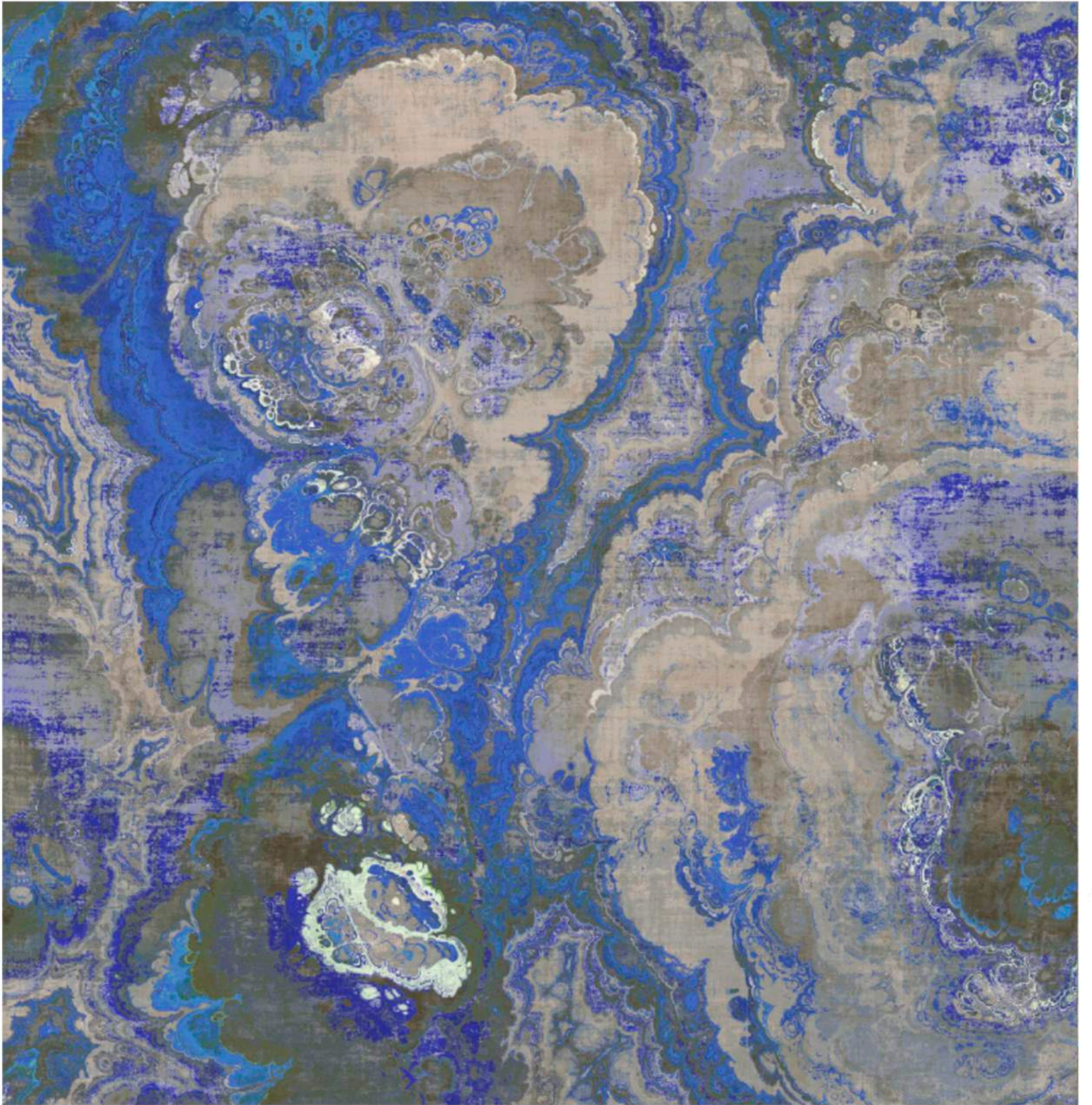














nicolette mayer

**NICOLETTE MAYER COLLECTION**

**DESIGN NAME:** AGATE

**COLOR:** SODALITE

**DESIGN NUMBER:**

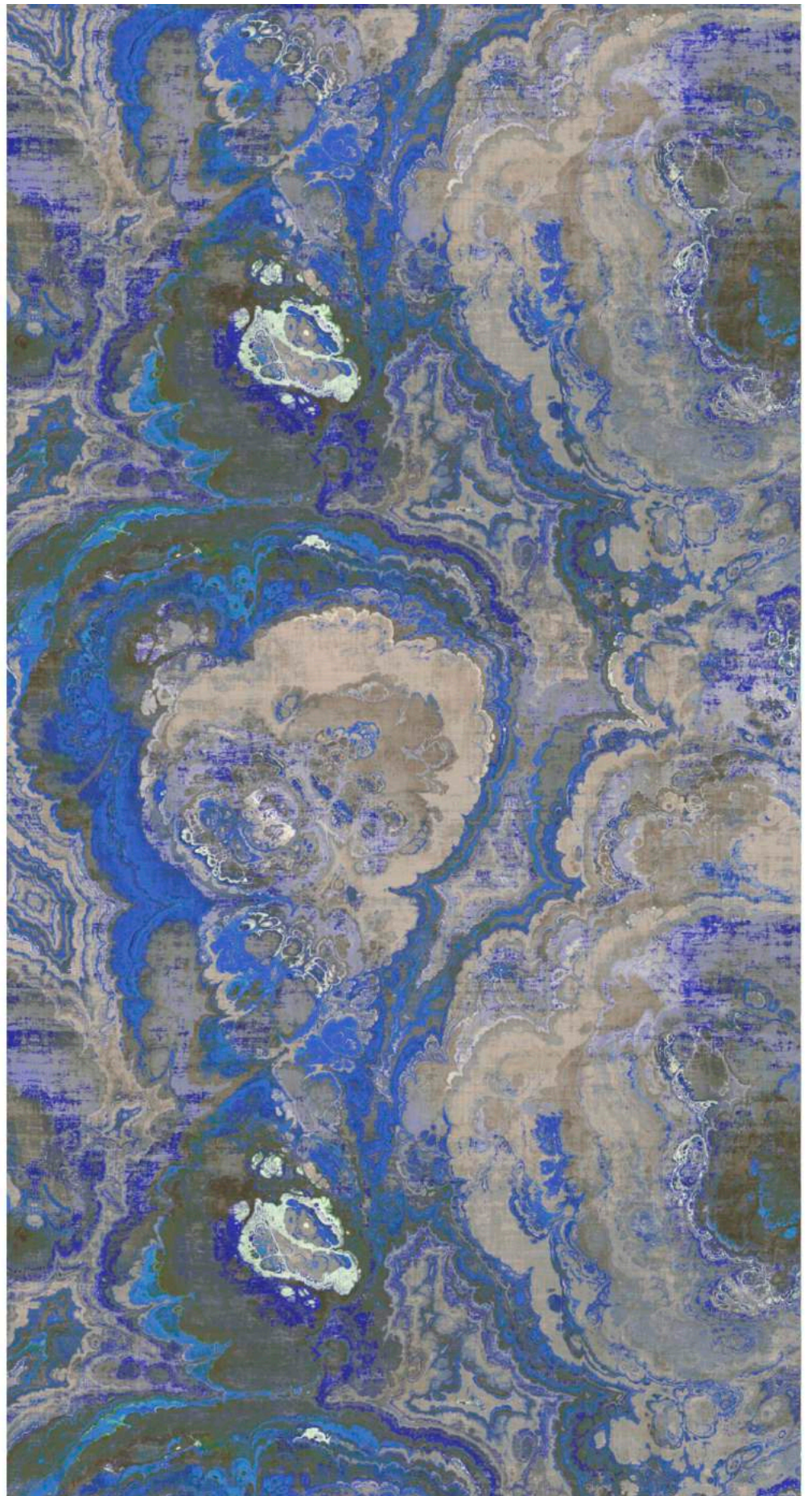
**ROLL SIZE:** 34" W X 8 YARDS / 86 cm X 7.3 m

**REPEAT:** 34" / 86 cm HIGH FULL REPEAT SHOWN

GRASSCLOTH ON PAPER

"Inspiration is the organic beauty of each facet of crystallized rock, the richness and depth and the almost wild mix of color through historical accident and compression of time and gravity. Each piece is endlessly fascinating and precious. Our Agate pattern also has that magical balance of the art of marbled paper, used in antique books, which I collect through old books and paper snippets as I travel in antique and flea markets."

*-Nicolette Mayer*









# nicolette mayer

## **NICOLETTE MAYER COLLECTION**

**DESIGN NAME:** AGATE

**COLOR:** LAVA

**DESIGN NUMBER:**

**ROLL SIZE:** 34" W X 8 YARDS / 86 cm X 7.3 m

**REPEAT:** 34" / 86 cm HIGH FULL REPEAT SHOWN

GRASSCLOTH ON PAPER

"Inspiration is the organic beauty of each facet of crystallized rock, the richness and depth and the almost wild mix of color through historical accident and compression of time and gravity. Each piece is endlessly fascinating and precious. Our Agate pattern also has that magical balance of the art of marbled paper, used in antique books, which I collect through old books and paper snippets as I travel in antique and flea markets."

*-Nicolette Mayer*



36"



COCO



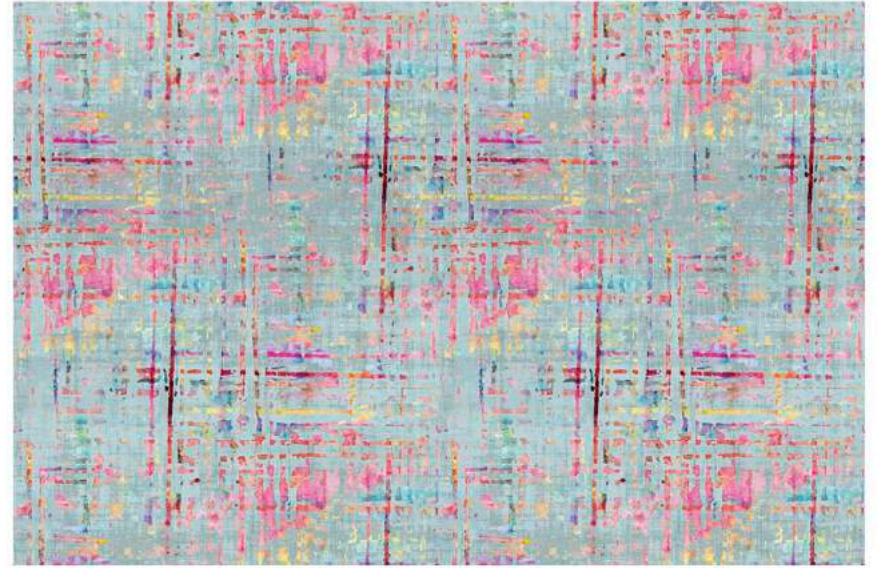


nicolette mayer

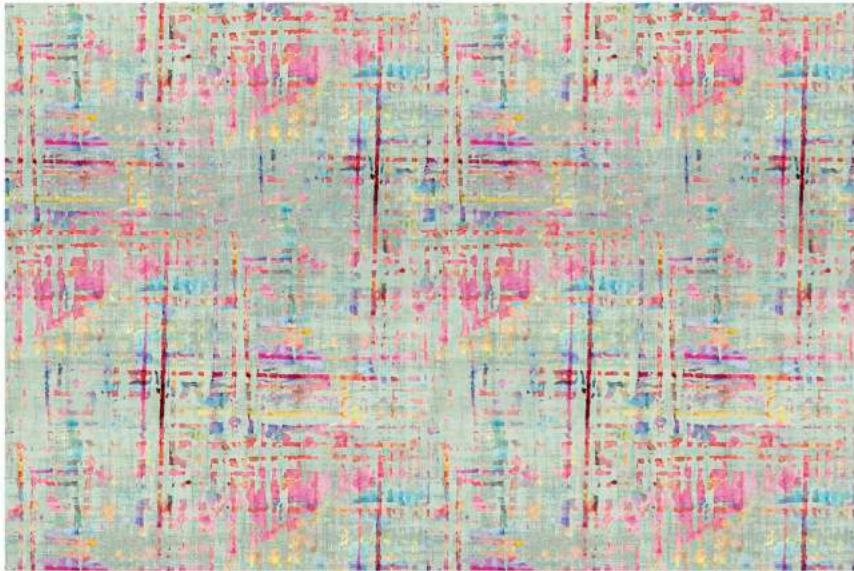
CONTENT: 53% LINEN, 47% COTTON  
VERTICAL REPEAT: 27" V / 68.5 cm  
HORIZONTAL REPEAT: 27" H / 68.5 cm  
WIDTH: 54 INCHES / 137 CM



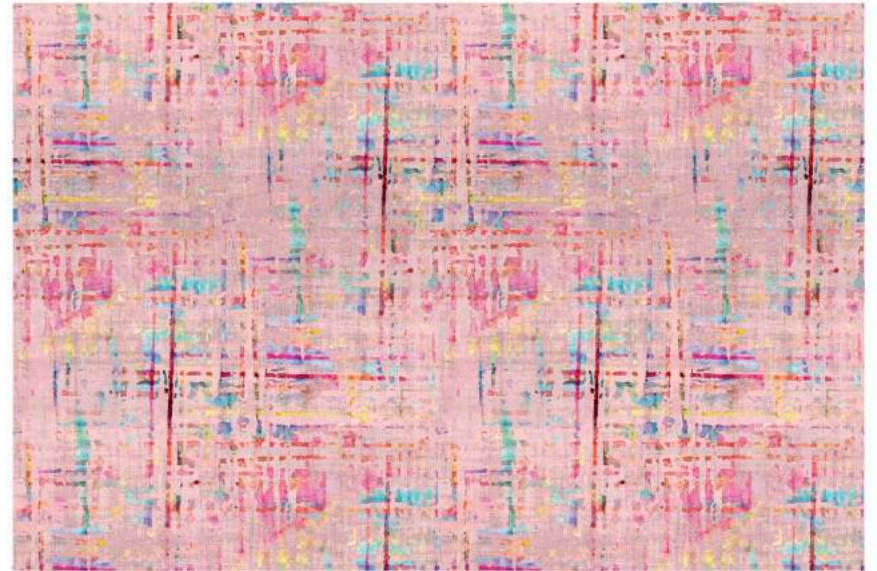
NICOLETTE MAYER COLLECTION  
DESIGN NAME: COCO  
COLOR: CREAM



NICOLETTE MAYER COLLECTION  
DESIGN NAME: COCO  
COLOR: BLEU



NICOLETTE MAYER COLLECTION  
DESIGN NAME: COCO  
COLOR: MINT



NICOLETTE MAYER COLLECTION  
DESIGN NAME: COCO  
COLOR: PINK







nicolette mayer

**NICOLETTE MAYER COLLECTION**

**DESIGN NAME:** COCO

**COLOR:** PINK

**DESIGN NUMBER:**

**ROLL SIZE:** 34" W X 8 YARDS / 86 cm X 7.3 m

**REPEAT:** 34" / 86 cm HIGH FULL REPEAT SHOWN

GRASSCLOTH ON PAPER

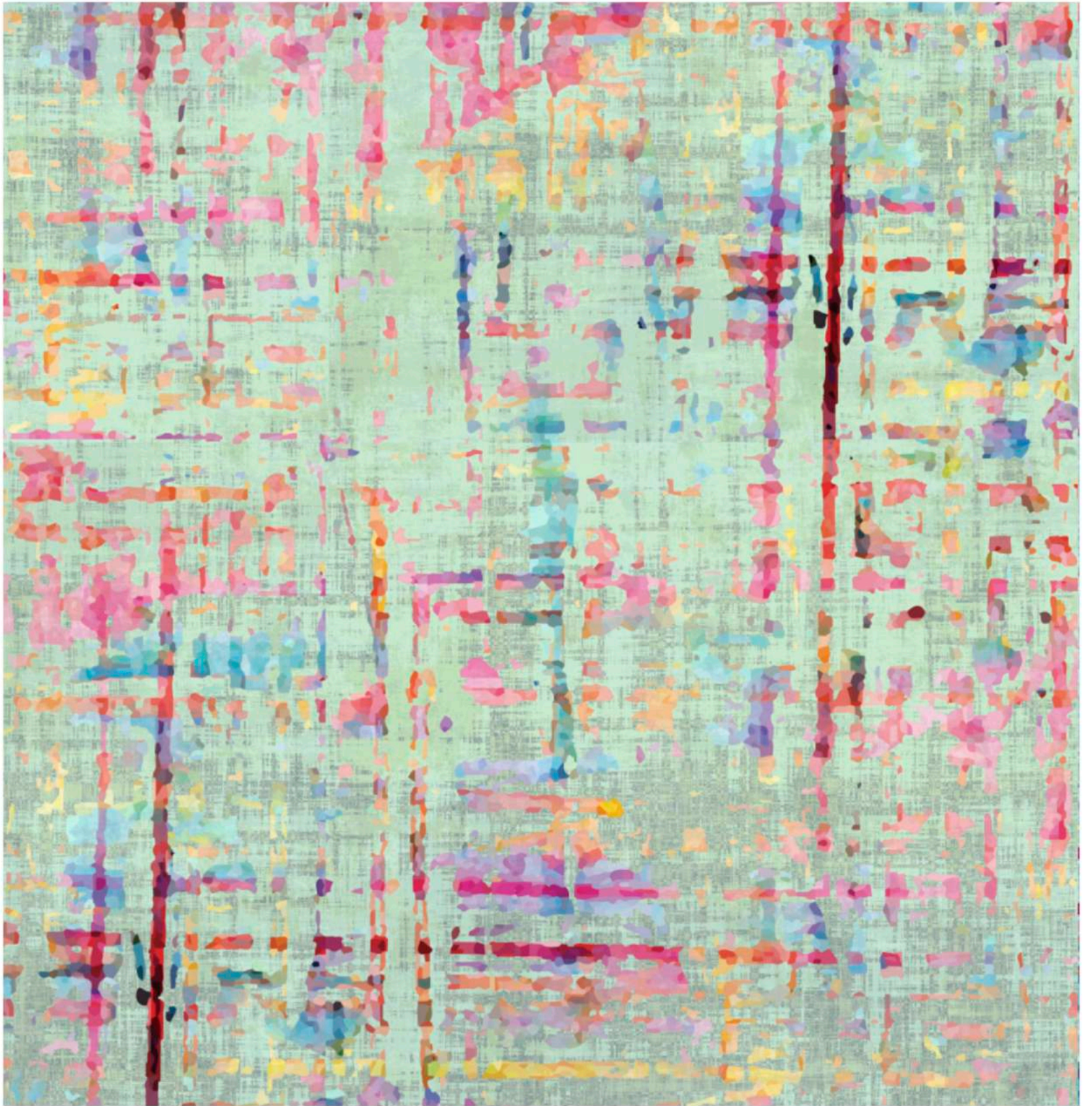
"The inspiration is the layered multicolored weave of the best boucle fabrics, with rich textured nubbinness, and a mix of color and depth inspired by admiration for Coco Chanel as a visionary in textile layering and style. Like Nan Kempner, famous for her couture trips, my grandmother also was a famous collector in the heyday of Chanel and her stories and escapades to Paris as a child were larger than life. Coco is a modern pattern with exuberant color evocative of novelty yarns and hand woven tweed."

*-Nicolette Mayer*



36"







# nicolette mayer

## NICOLETTE MAYER COLLECTION

**DESIGN NAME:** COCO

**COLOR:** MINT

**DESIGN NUMBER:**

**ROLL SIZE:** 34" W X 8 YARDS / 86 cm X 7.3 m

**REPEAT:** 34" / 86 cm HIGH FULL REPEAT SHOWN

GRASSCLOTH ON PAPER

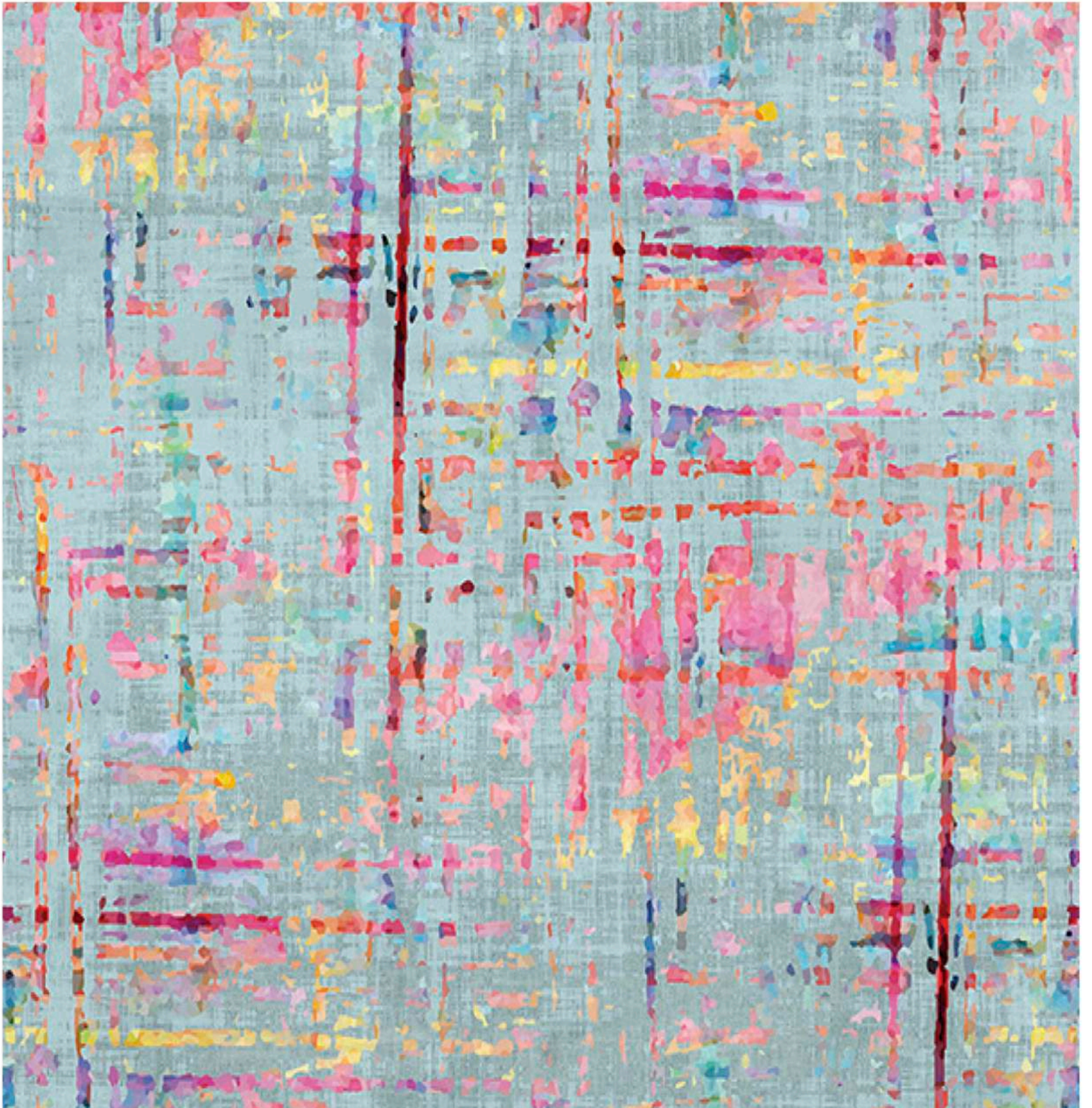
"The inspiration is the layered multicolored weave of the best boucle fabrics, with rich textured nubbinness, and a mix of color and depth inspired by admiration for Coco Chanel as a visionary in textile layering and style. Like Nan Kempner, famous for her couture trips, my grandmother also was a famous collector in the heyday of Chanel and her stories and escapades to Paris as a child were larger than life. Coco is a modern pattern with exuberant color evocative of novelty yarns and hand woven tweed."

*-Nicolette Mayer*



36"







nicolette mayer

**NICOLETTE MAYER COLLECTION**

**DESIGN NAME:** COCO

**COLOR:** BLEU

**DESIGN NUMBER:**

**ROLL SIZE:** 34" W X 8 YARDS / 86 cm X 7.3 m

**REPEAT:** 34" / 86 cm HIGH FULL REPEAT SHOWN

GRASSCLOTH ON PAPER

"The inspiration is the layered multicolored weave of the best boucle fabrics, with rich textured nubbinness, and a mix of color and depth inspired by admiration for Coco Chanel as a visionary in textile layering and style. Like Nan Kempner, famous for her couture trips, my grandmother also was a famous collector in the heyday of Chanel and her stories and escapades to Paris as a child were larger than life. Coco is a modern pattern with exuberant color evocative of novelty yarns and hand woven tweed."

*-Nicolette Mayer*



36"







nicolette mayer

**NICOLETTE MAYER COLLECTION**

**DESIGN NAME:** COCO

**COLOR:** CREAM

**DESIGN NUMBER:**

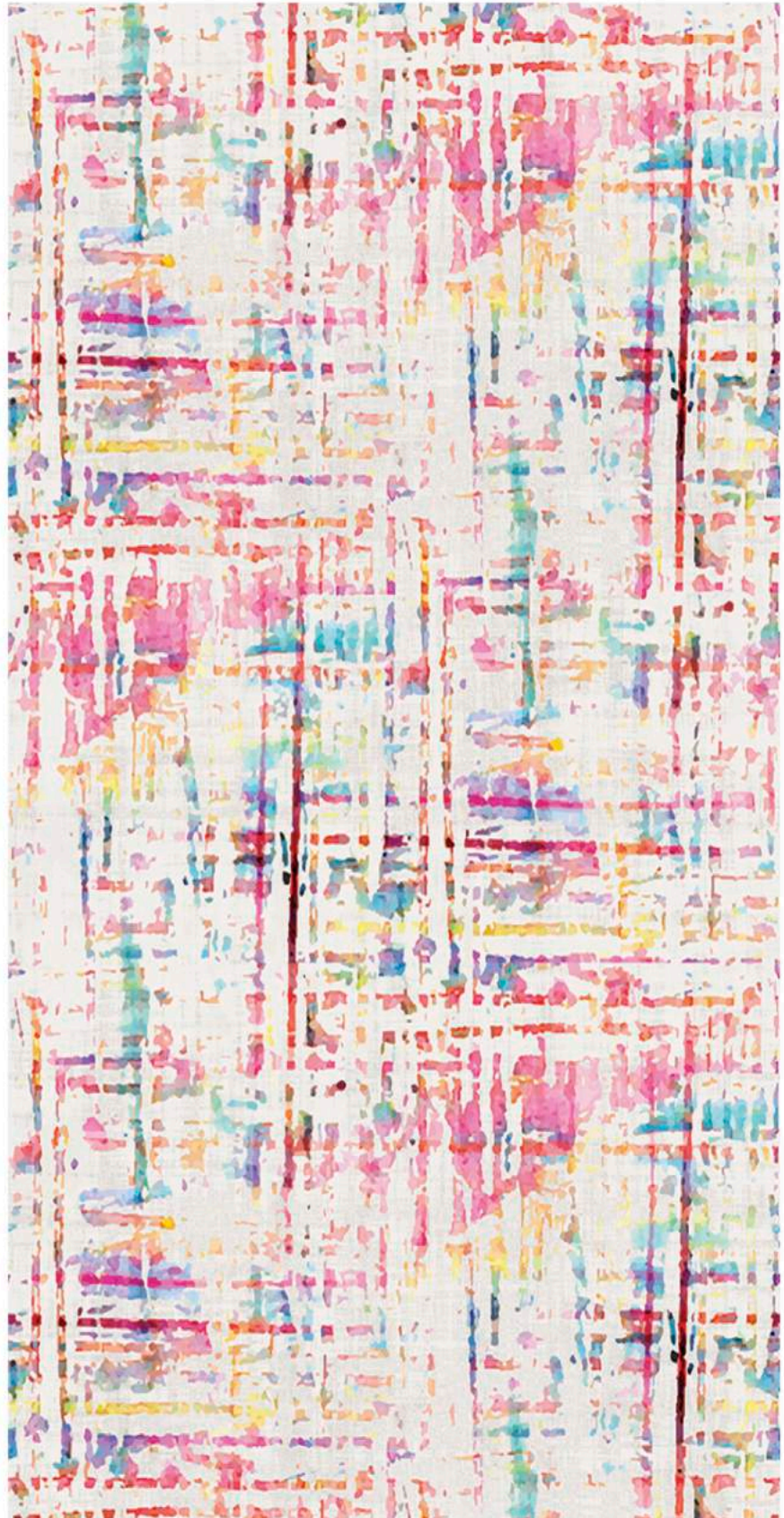
**ROLL SIZE:** 34" W X 8 YARDS / 86 cm X 7.3 m

**REPEAT:** 34" / 86 cm HIGH FULL REPEAT SHOWN

GRASSCLOTH ON PAPER

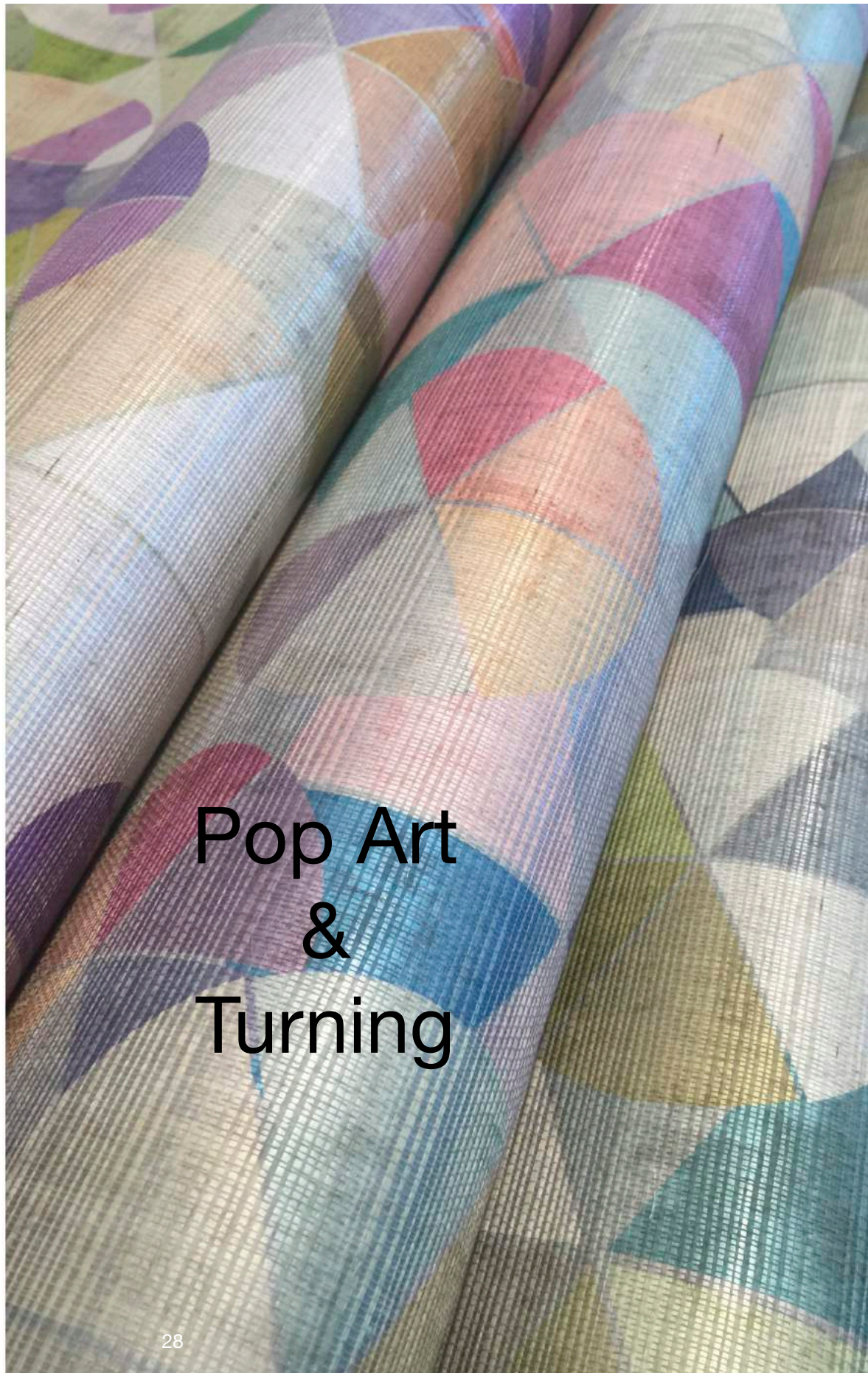
"The inspiration is the layered multicolored weave of the best boucle fabrics, with rich textured nubbinness, and a mix of color and depth inspired by admiration for Coco Chanel as a visionary in textile layering and style. Like Nan Kempner, famous for her couture trips, my grandmother also was a famous collector in the heyday of Chanel and her stories and escapades to Paris as a child were larger than life. Coco is a modern pattern with exuberant color evocative of novelty yarns and hand woven tweed."

*-Nicolette Mayer*



36"



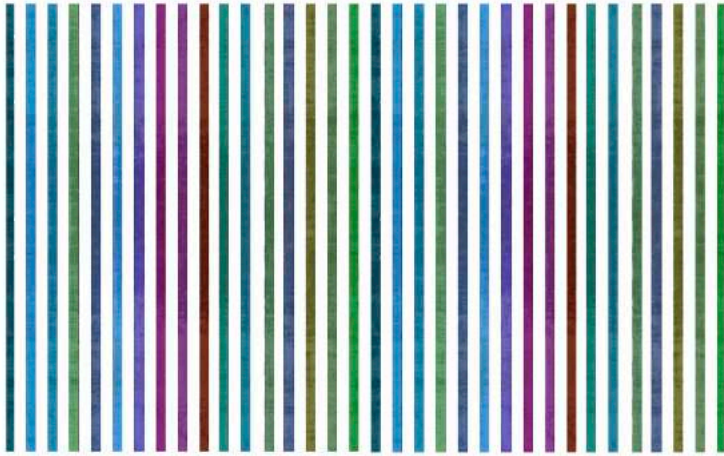


# Pop Art & Turning



nicolette mayer

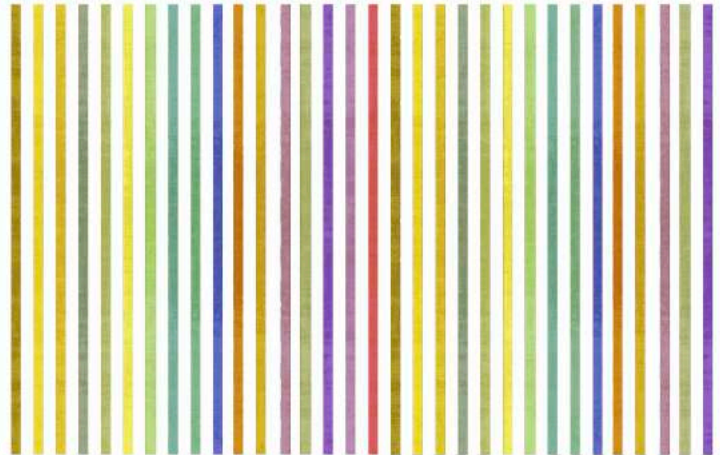
CONTENT: 100% LINEN  
SHEER  
VERTICAL REPEAT:  
HORIZONTAL REPEAT: 27" H / 68.5 cm  
WIDTH: 54 INCHES / 137 CM



NICOLETTE MAYER COLLECTION  
DESIGN NAME: POP ART  
COLOR: JEWEL



NICOLETTE MAYER COLLECTION  
DESIGN NAME: POP ART  
COLOR: FUN



NICOLETTE MAYER COLLECTION  
DESIGN NAME: POP ART  
COLOR: SEPTEMBER







# nicolette mayer

## NICOLETTE MAYER COLLECTION

**DESIGN NAME:** POP ART

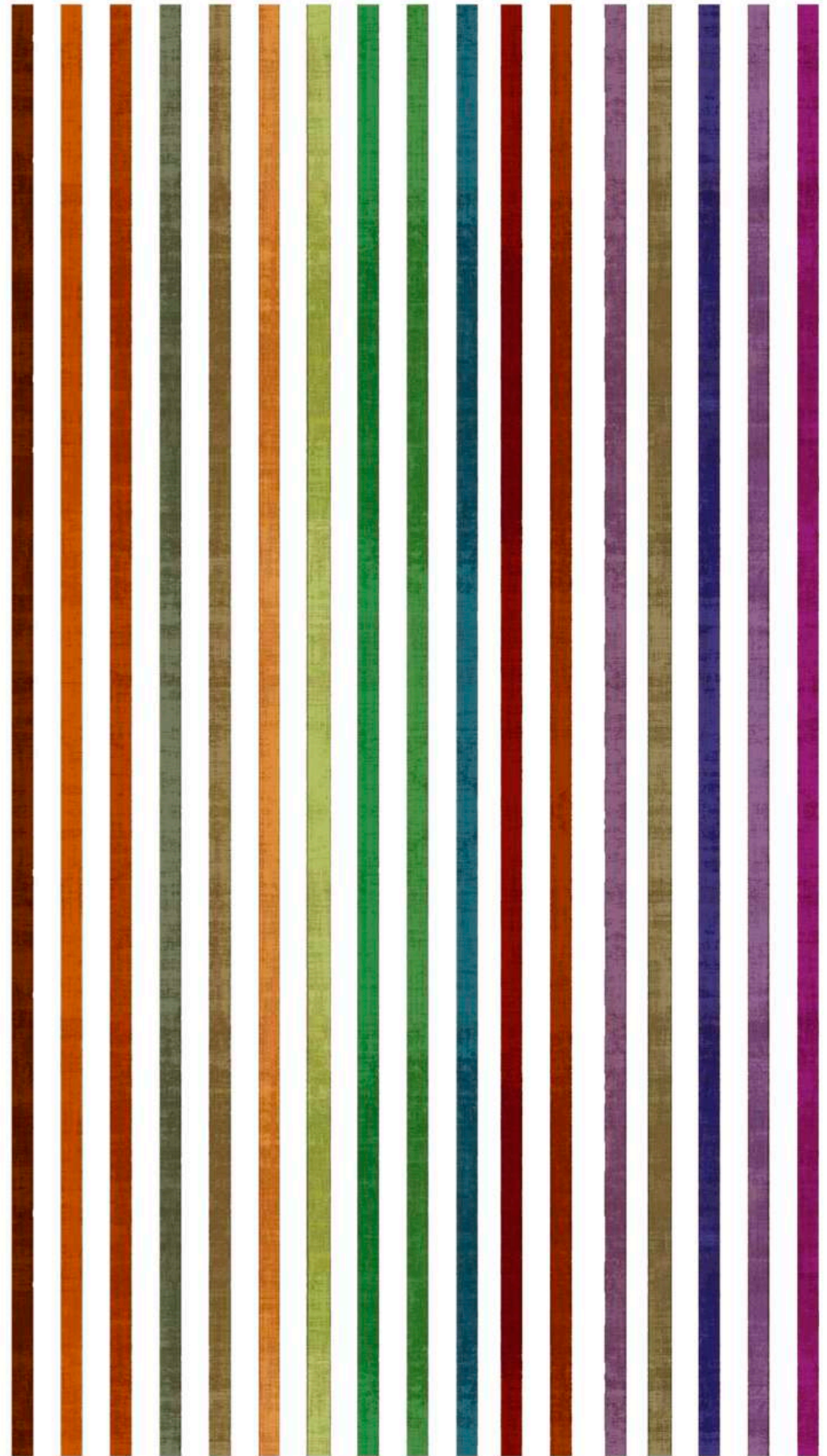
**COLOR:** FUN

**DESIGN NUMBER:**

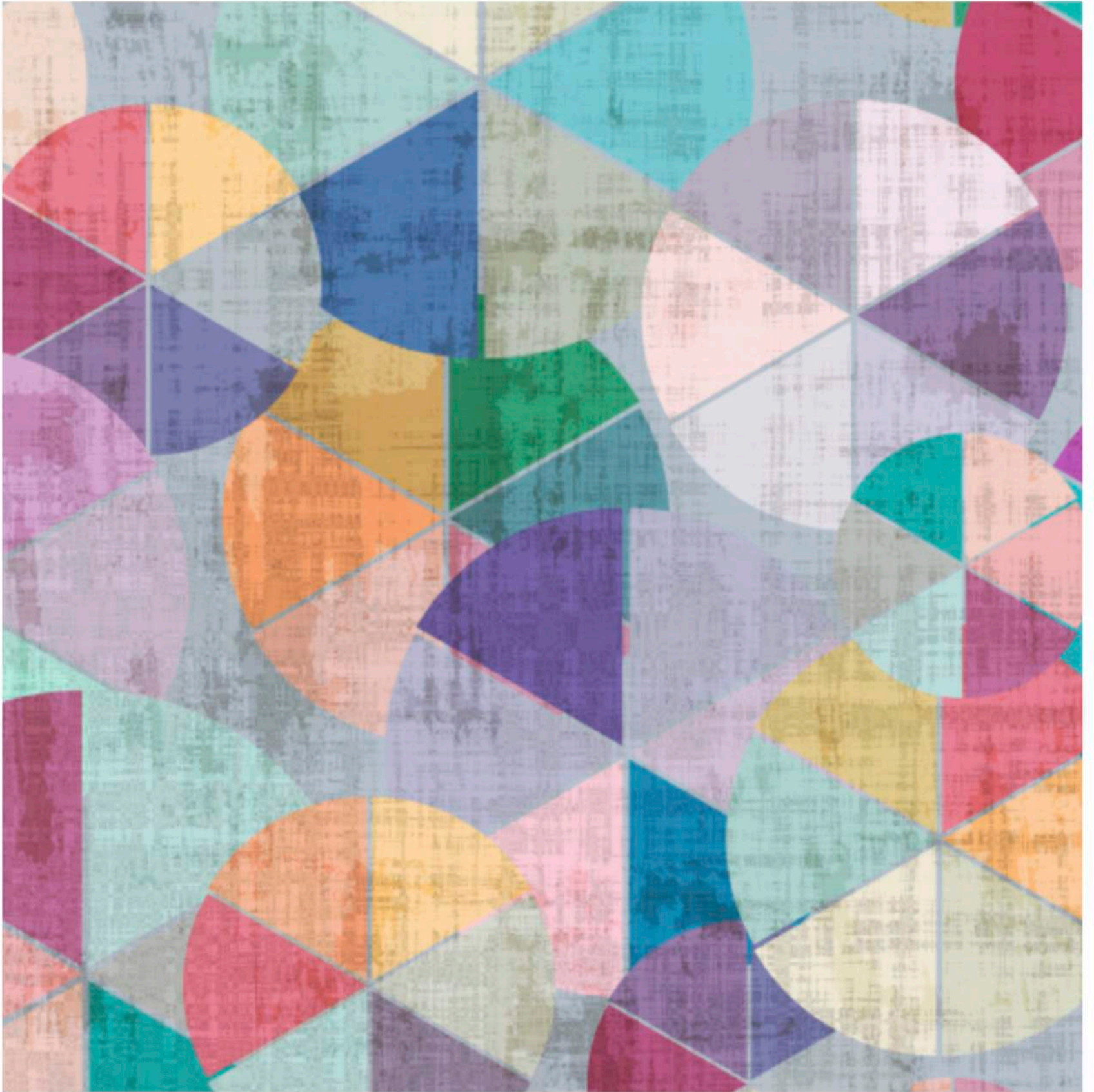
**ROLL SIZE:** 34" W X 8 YARDS / 86 cm X 7.3 m

**REPEAT:** 34" H

GRASSCLOTH ON PAPER









# nicolette mayer

## NICOLETTE MAYER COLLECTION

DESIGN NAME: TURNING

COLOR: MAY

DESIGN NUMBER:

ROLL SIZE: 7.3 M, 8 YARDS

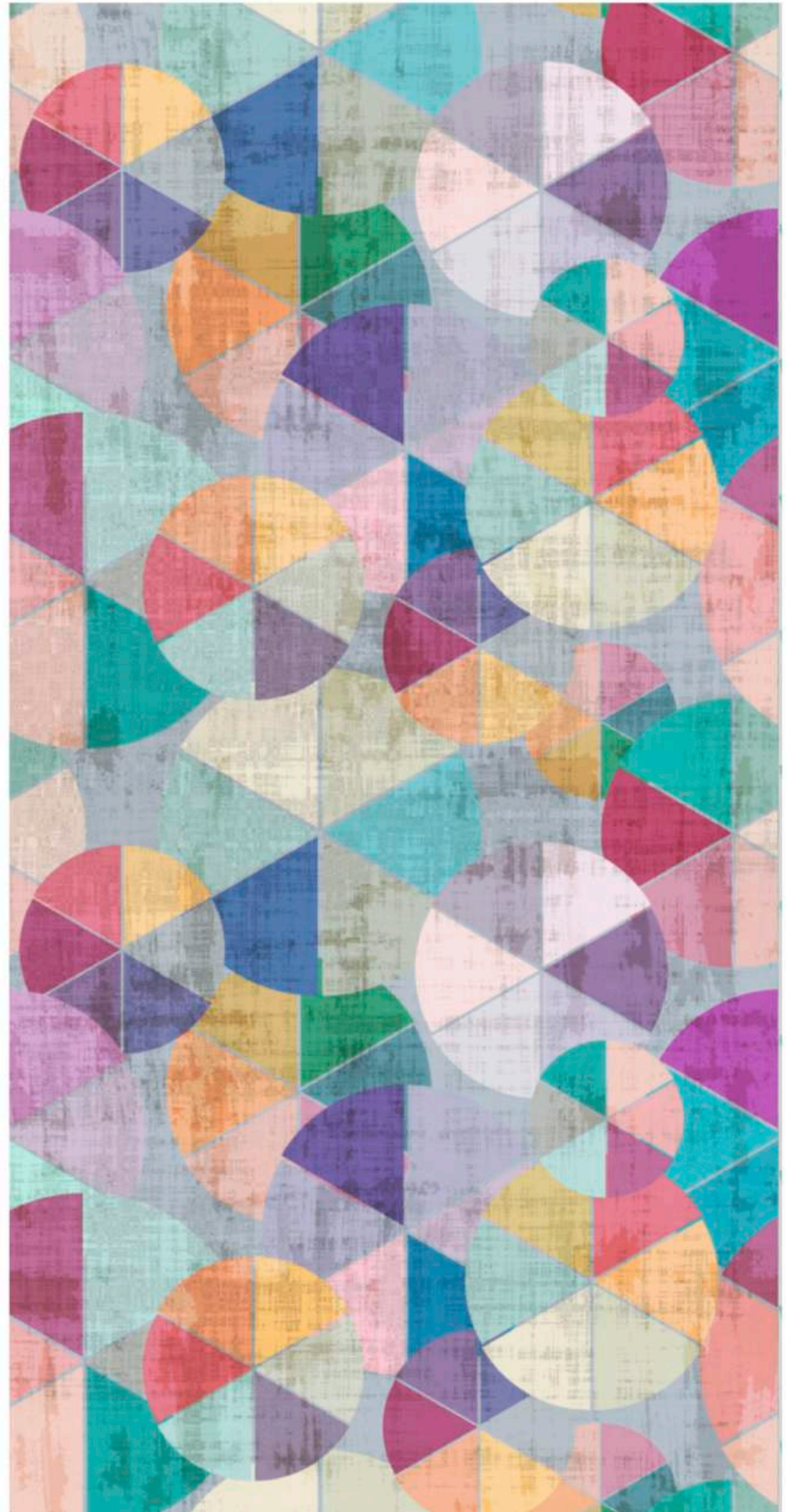
REPEAT: 34 "H X 34 "V, 86.5cm X 86.5cm

SUBSTRATE: GRASSCLOTH

CLASS: A FIRE RATING (ASTM E84-16 CLASS A)  
FOR CONTRACT/HOSPITALITY & RESIDENTIAL

TURNING IS A MODERN PINWHEEL GEOMETRIC WITH MULTIPLE LAYERS OF TEXTURE, COLOR AND FUN. CIRCLES, RHOMBUSES, PIE SHAPES AND TRIANGLE ALL TURN AND FLOAT, VYING FOR YOUR ATTENTION. SUBTLE AND ELEGANT, YET ALSO BOLD AND MODERN, TURNING IS MODERN WALLAPER AT ITS BEST.

*-Nicolette Mayer*









nicolette mayer

**NICOLETTE MAYER COLLECTION**

**DESIGN NAME:** POP ART

**COLOR:** SEPTEMBER

**DESIGN NUMBER:**

**ROLL SIZE:** 34" W X 8 YARDS / 86 cm X 7.3 m

**REPEAT:** 34" H

GRASSCLOTH ON PAPER









nicolette mayer

NICOLETTE MAYER COLLECTION

DESIGN NAME: TURNING

COLOR: SEPTEMBER

DESIGN NUMBER:

ROLL SIZE: 7.3 M, 8 YARDS

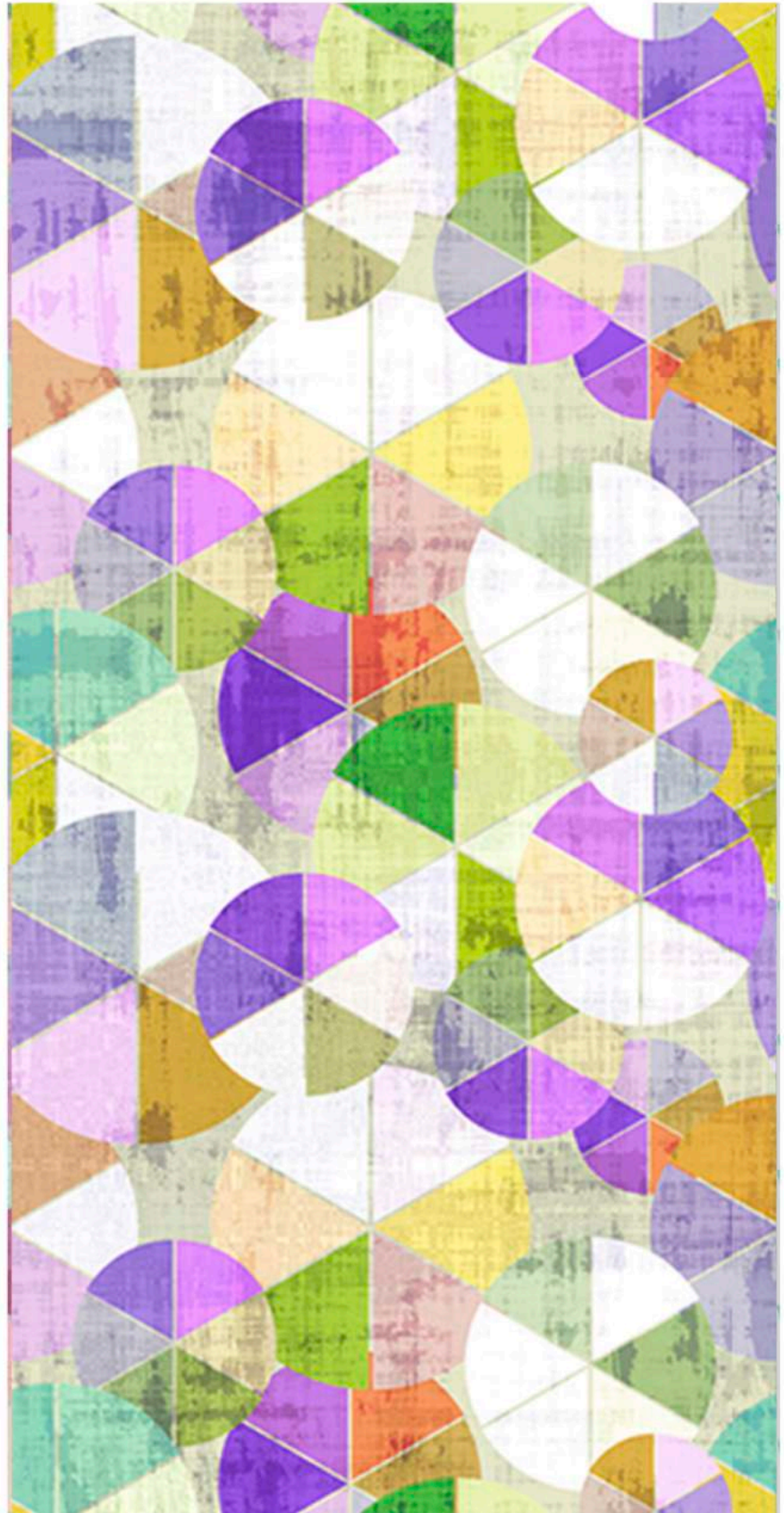
REPEAT: 34 "H X 34 "V, 86.5cm X 86.5cm

SUBSTRATE: GRASSCLOTH

CLASS: A FIRE RATING (ASTM E84-16 CLASS A)  
FOR CONTRACT/HOSPITALITY & RESIDENTIAL

TURNING IS A MODERN PINWHEEL GEOMETRIC WITH MULTIPLE LAYERS OF TEXTURE, COLOR AND FUN. CIRCLES, RHOMBUSES, PIE SHAPES AND TRIANGLE ALL TURN AND FLOAT, VYING FOR YOUR ATTENTION. SUBTLE AND ELEGANT, YET ALSO BOLD AND MODERN, TURNING IS MODERN WALLAPER AT ITS BEST.

*-Nicolette Mayer*









nicolette mayer

**NICOLETTE MAYER COLLECTION**

**DESIGN NAME:** POP ART

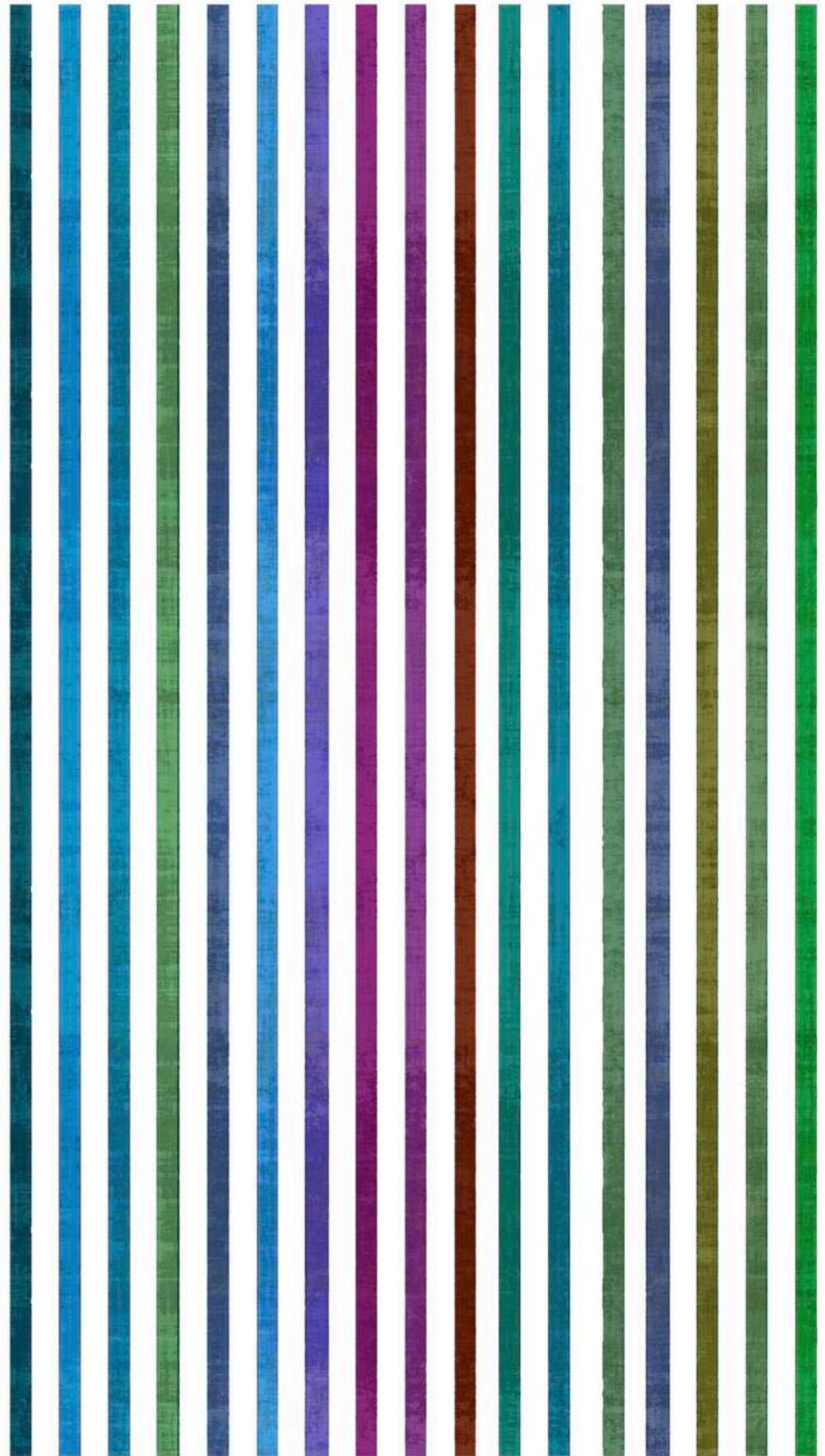
**COLOR:** JEWEL

**DESIGN NUMBER:**

**ROLL SIZE:** 34" W X 8 YARDS / 86 cm X 7.3 m

**REPEAT:** 34" H

GRASSCLOTH ON PAPER









nicolette mayer

NICOLETTE MAYER COLLECTION

DESIGN NAME: TURNING

COLOR: JUNE

DESIGN NUMBER:

ROLL SIZE: 7.3 M, 8 YARDS

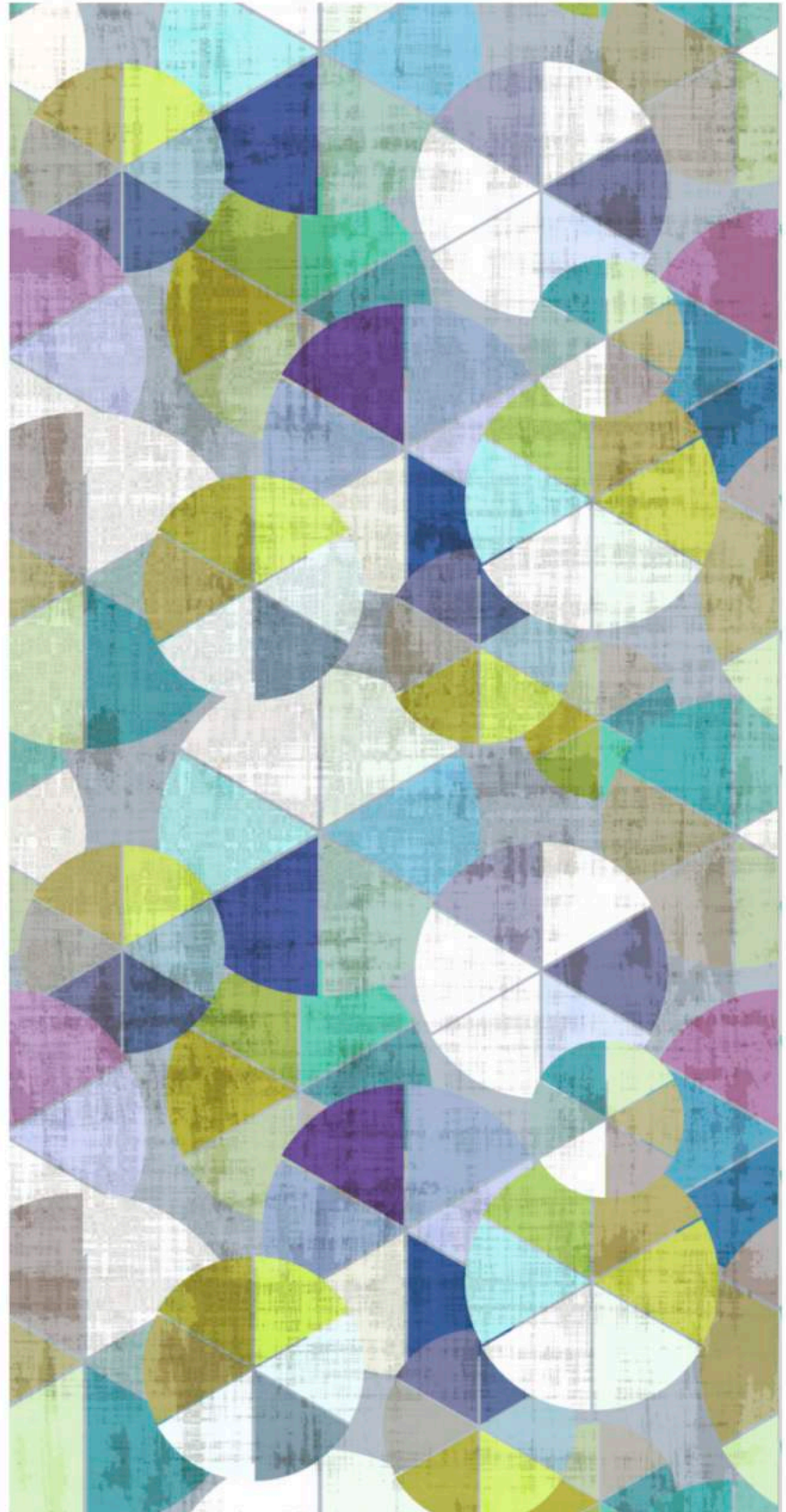
REPEAT: 34 "H X 34 "V, 86.5cm X 86.5cm

SUBSTRATE: GRASSCLOTH

CLASS: A FIRE RATING (ASTM E84-16 CLASS A)  
FOR CONTRACT/HOSPITALITY & RESIDENTIAL

TURNING IS A MODERN PINWHEEL GEOMETRIC WITH MULTIPLE LAYERS OF TEXTURE, COLOR AND FUN. CIRCLES, RHOMBUSES, PIE SHAPES AND TRIANGLE ALL TURN AND FLOAT, VYING FOR YOUR ATTENTION. SUBTLE AND ELEGANT, YET ALSO BOLD AND MODERN, TURNING IS MODERN WALLAPER AT ITS BEST.

*-Nicolette Mayer*







**Modern Steps  
&  
Still Life Vintage**







NICOLETTE MAYER COLLECTION  
DESIGN NAME: MODERN STEPS  
COLOR: SUMMER



NICOLETTE MAYER COLLECTION  
DESIGN NAME: MODERN STEPS  
COLOR: FALL



NICOLETTE MAYER COLLECTION  
DESIGN NAME: MODERN STEPS  
COLOR: AUTUMN

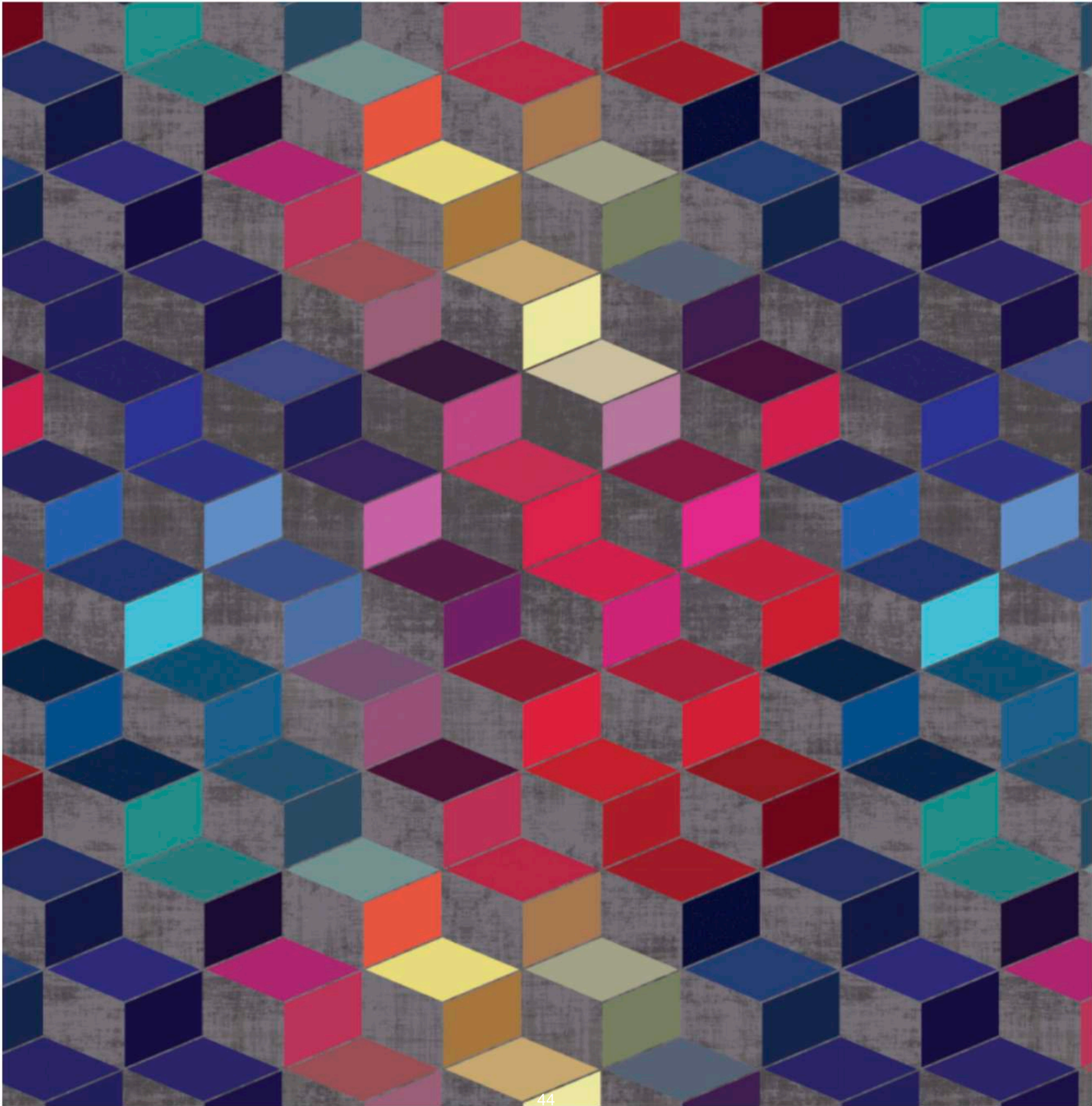


NICOLETTE MAYER COLLECTION  
DESIGN NAME: STILL LIFE  
COLOR: VINTAGE



NICOLETTE MAYER COLLECTION  
DESIGN NAME: GUERLIN  
COLOR: VINTAGE







nicolette mayer

NICOLETTE MAYER COLLECTION

DESIGN NAME: MODERN STEPS

COLOR: SUMMER

DESIGN NUMBER:

ROLL SIZE: 7.3 M, 8 YARDS

REPEAT: 17" V X 17" H / 43.18cm X 43.18cm

SUBSTRATE: GRASSCLOTH

CLASS: A FIRE RATING (ASTM E84-16 CLASS A)  
FOR CONTRACT/HOSPITALITY & RESIDENTIAL

MODERN STEPS IS A FUN MODERN CUBIST GEOMETRIC WITH MULTIPLE LAYERS OF TEXTURE AND COLOR. THE SHAPE HAS BEEN AROUND FOR HUNDREDS OF YEARS, BUT THIS STEP PATTERN IS REVOLUTIONIZED WITH OUR APPROACH TO COLOR, AGING, TEXTURE AND ELEGANCE.

*-Nicolette Mayer*









# nicolette mayer

**NICOLETTE MAYER COLLECTION**

**DESIGN NAME:** STILL LIFE

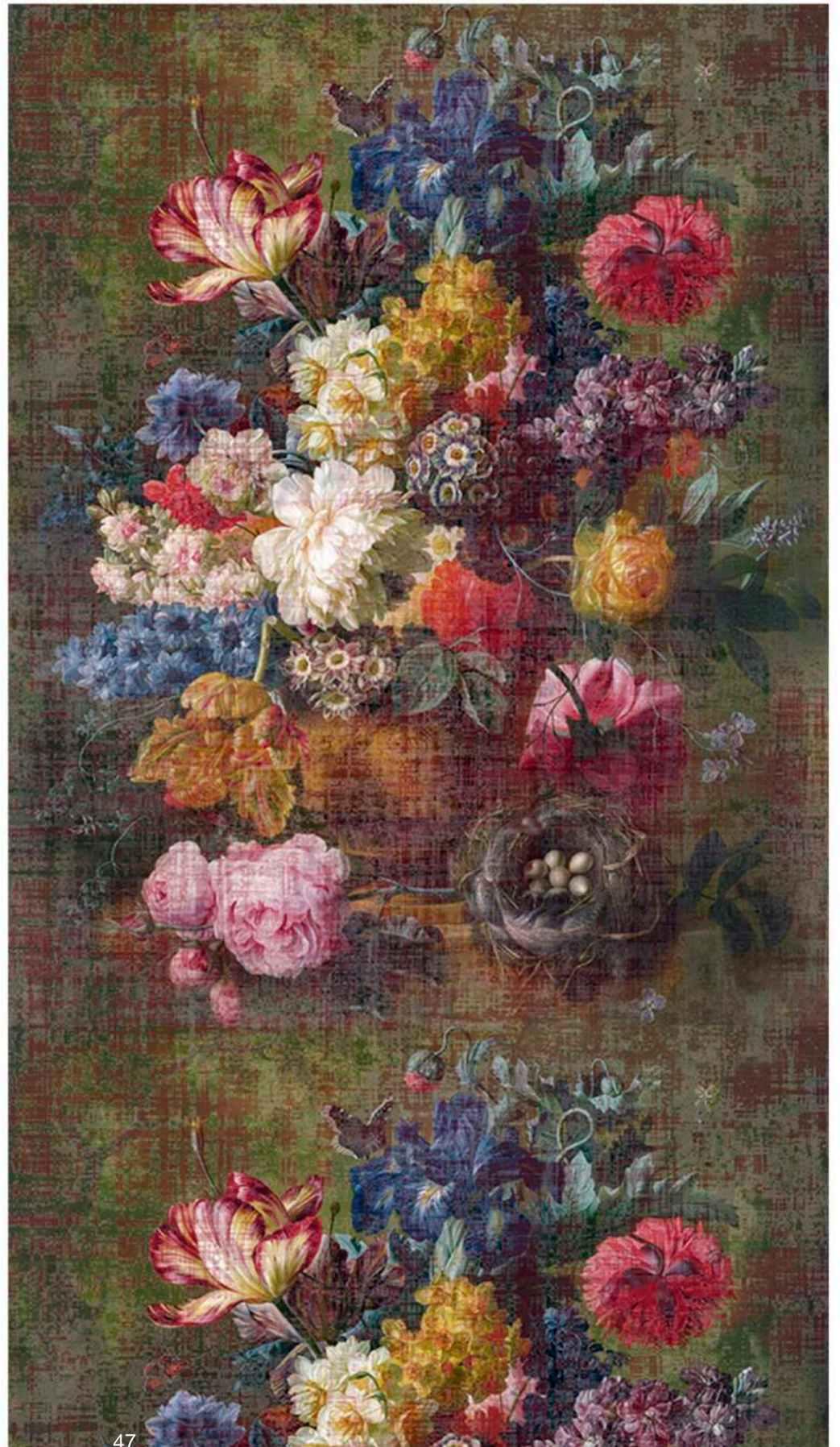
**COLOR:** VINTAGE

**DESIGN NUMBER:**

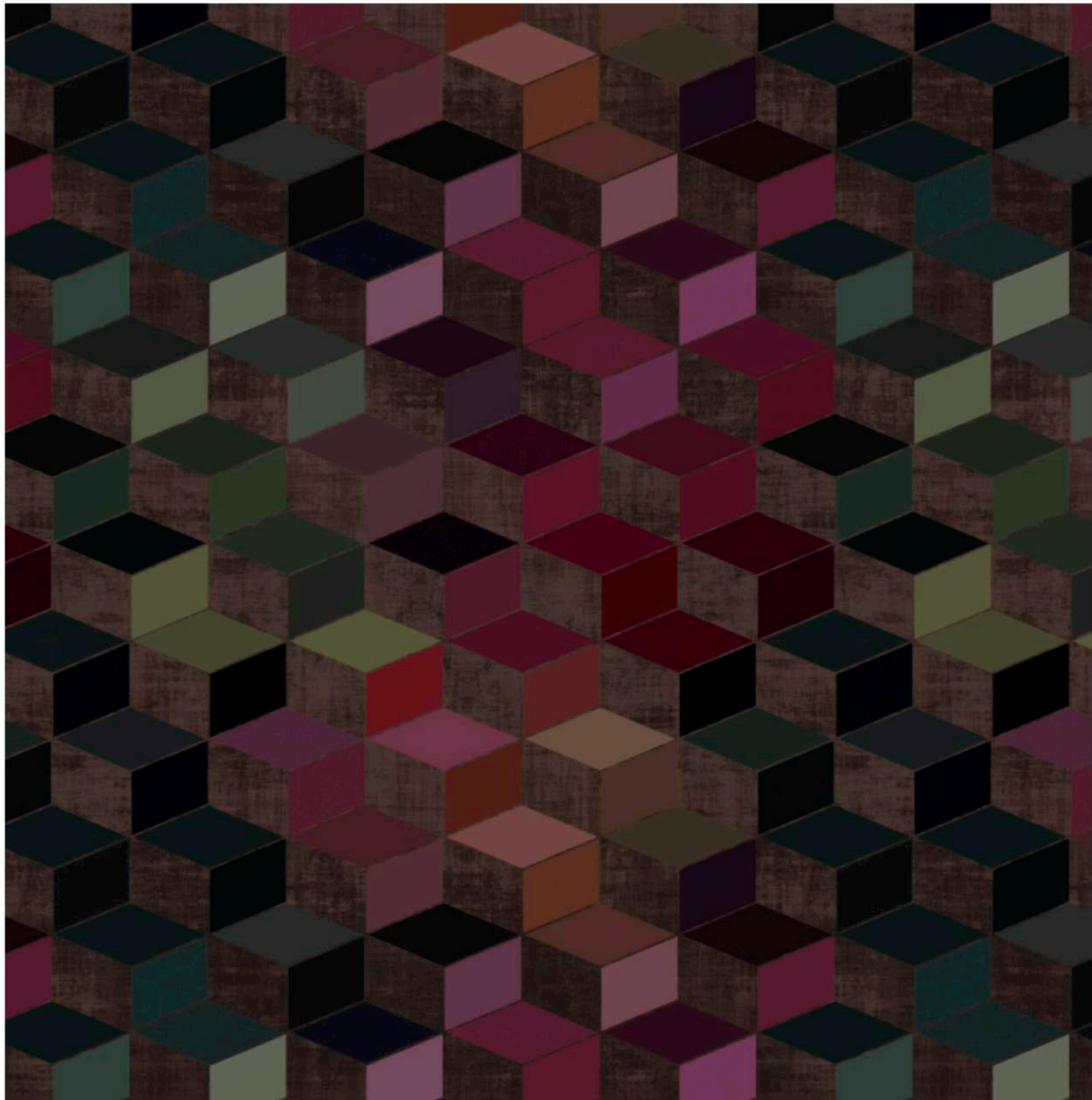
**ROLL SIZE:** 34" W X 8 YARDS / 86 cm X 7.3 m

**REPEAT:** 45" V X 34" H / 114.3cm X 86cm

GRASSCLOTH ON PAPER









nicolette mayer

NICOLETTE MAYER COLLECTION

DESIGN NAME: MODERN STEPS

COLOR: AUTUMN

DESIGN NUMBER:

ROLL SIZE: 7.3 M, 8 YARDS

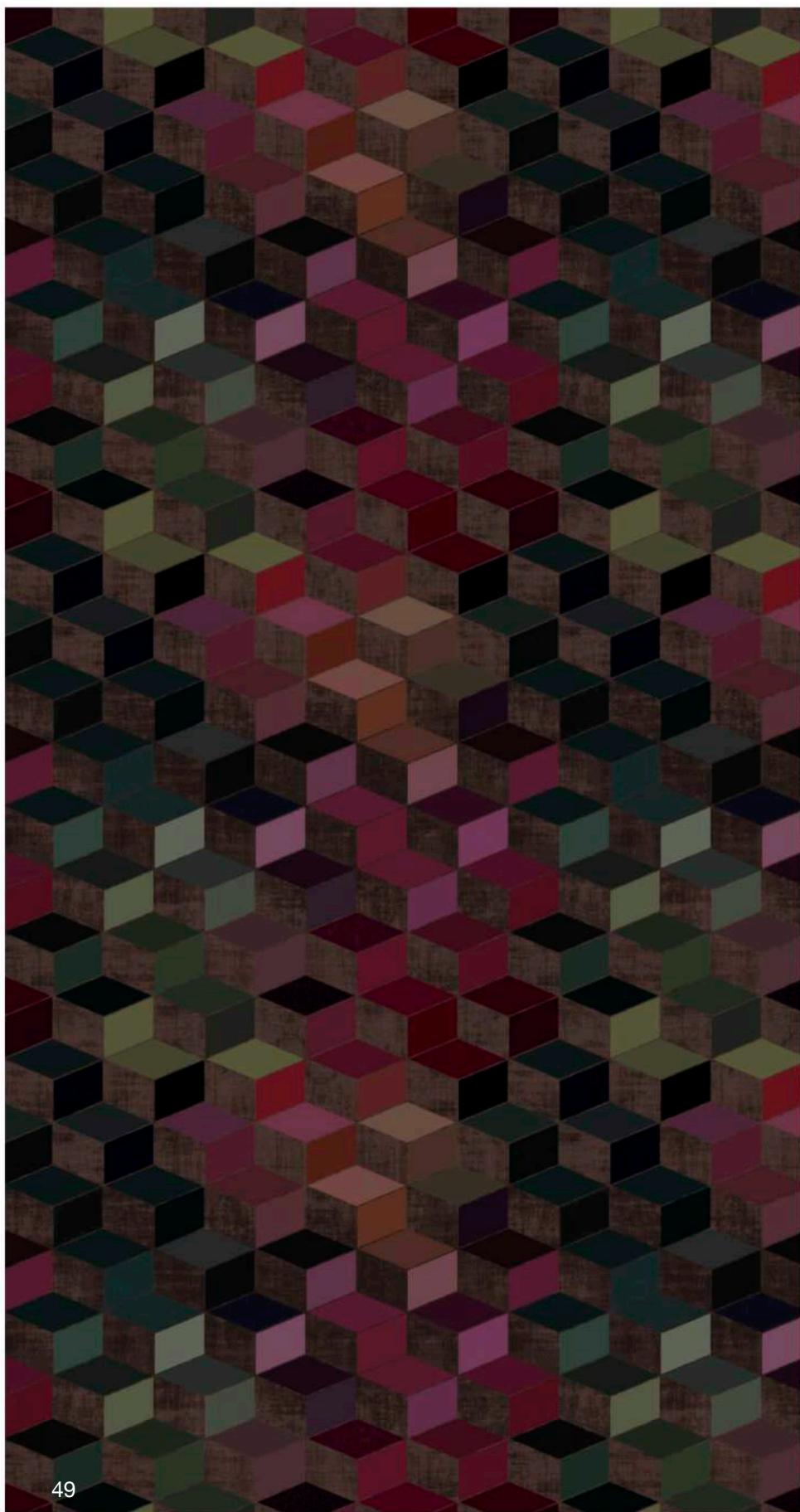
REPEAT: 17" V X 17" H / 43.18cm X 43.18cm

SUBSTRATE: GRASSCLOTH

CLASS: A FIRE RATING (ASTM E84-16 CLASS A)  
FOR CONTRACT/HOSPITALITY & RESIDENTIAL

MODERN STEPS IS A FUN MODERN CUBIST GEOMETRIC WITH MULTIPLE LAYERS OF TEXTURE AND COLOR. THE SHAPE HAS BEEN AROUND FOR HUNDREDS OF YEARS, BUT THIS STEP PATTERN IS REVOLUTIONIZED WITH OUR APPROACH TO COLOR, AGING, TEXTURE AND ELEGANCE.

*-Nicolette Mayer*









# nicolette mayer

## **NICOLETTE MAYER COLLECTION**

**DESIGN NAME:** GUERLIN

**COLOR:** VINTAGE

**DESIGN NUMBER:**

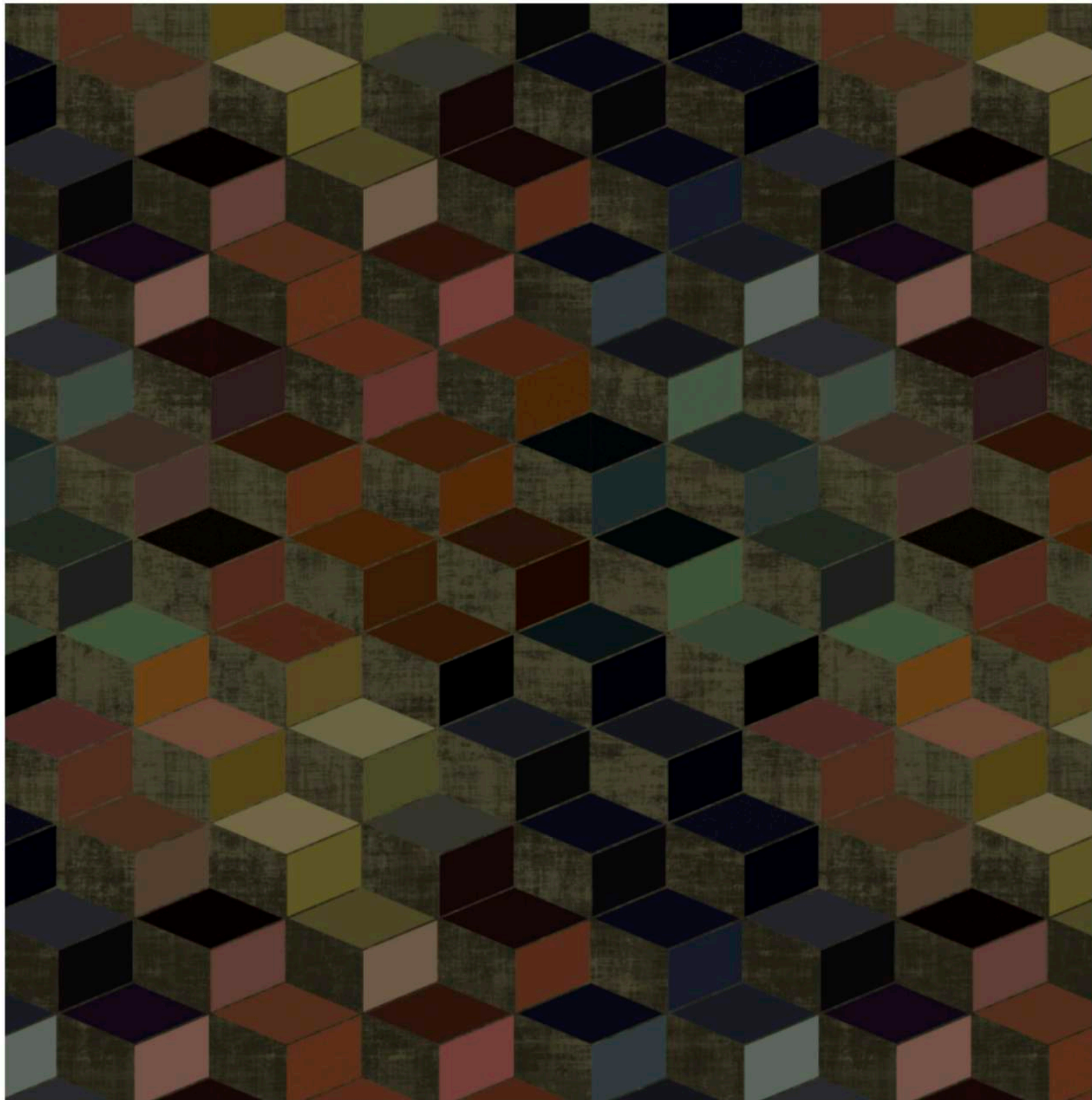
**ROLL SIZE:** 34" W X 8 YARDS / 86 cm X 7.3 m

**REPEAT:** 45"V X 34"H / 114.3cm X 86cm

GRASSCLOTH ON PAPER









nicolette mayer

NICOLETTE MAYER COLLECTION

DESIGN NAME: MODERN STEPS

COLOR: FALL

DESIGN NUMBER:

ROLL SIZE: 7.3 M, 8 YARDS

REPEAT: 17" V X 17" H / 43.18cm X 43.18cm

SUBSTRATE: GRASSCLOTH

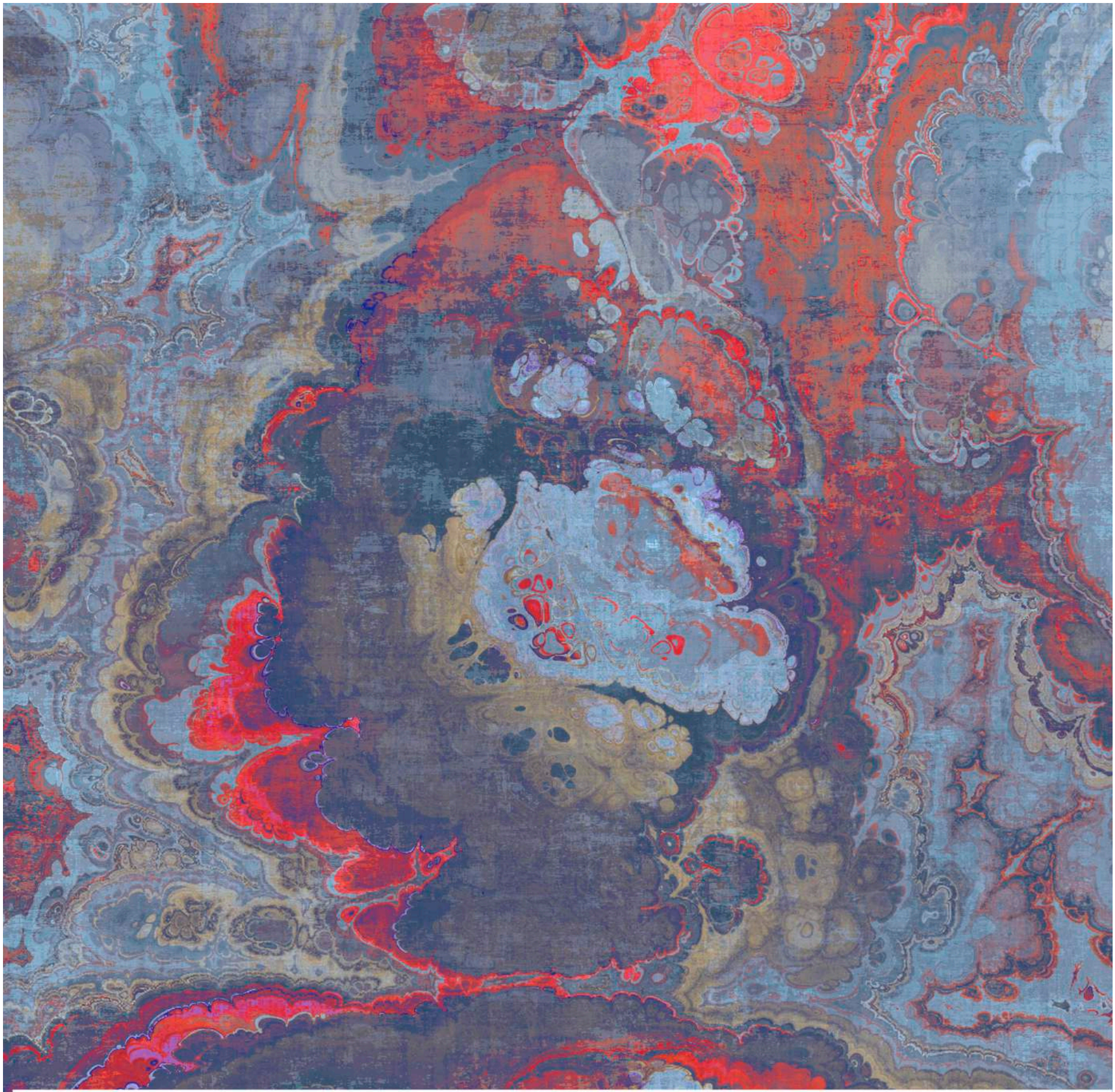
CLASS: A FIRE RATING (ASTM E84-16 CLASS A)  
FOR CONTRACT/HOSPITALITY & RESIDENTIAL

MODERN STEPS IS A FUN MODERN CUBIST GEOMETRIC WITH MULTIPLE LAYERS OF TEXTURE AND COLOR. THE SHAPE HAS BEEN AROUND FOR HUNDREDS OF YEARS, BUT THIS STEP PATTERN IS REVOLUTIONIZED WITH OUR APPROACH TO COLOR, AGING, TEXTURE AND ELEGANCE.

*-Nicolette Mayer*







For Representatives: +1 561 241 6906 info@nicolettemaver.com #NicoletteMaver www.nicolettemaver.com