

nicolette mayer

BALLROOM

LILAC • N4 0005 BALL

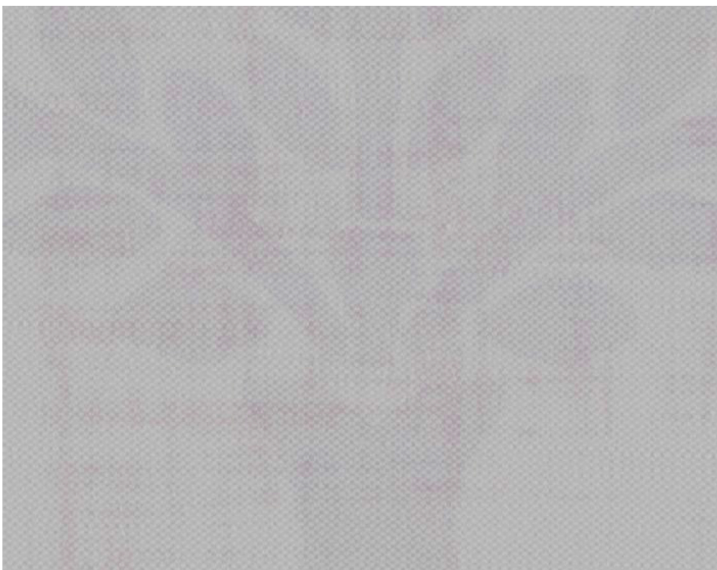
Printed Fabrics from the PALACE Collection by Nicolette Mayer



APPROX. WIDTH . . . 54" / 137.16 cm
APPROX. REPEAT . . . HORIZONTAL 27" / 68.58 cm
VERTICAL 54" / 137.16 cm
MATCH SIDE MATCH
CONTENT 53% BELGIAN LINEN 47% COTTON
SUGGESTED USE . . . MEDIUM DUTY MULTIPURPOSE
ABRASION 32,000 MARTINDALE
CLEANABILITY DRY CLEAN ONLY
MADE IN USA
STOCKED IN. SUPPLIERS WAREHOUSE USA
DESIGN DAMASK
SCALE EXTRA LARGE

DESIGN INSPIRATION

Inspired by the modern art installations in grand ballrooms such as The Hall of Mirrors in Versailles, Ballroom is a large scale modern damask that is at home in modern or traditional environments with soft powdery pastel palette and tone-on-tone shadings.



DETAIL IMAGE