



Hhemp.co

info@hhemp.co

Sample 488-051022-018

2g Caviar Blunts-D8-Gelato

Batch/Lot # HH-2G-BT-GELATO-1110

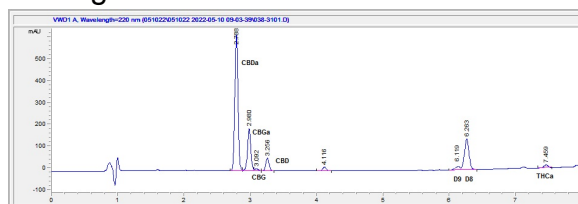
Sample Submitted: 05-10-2022; Report Date: 05-12-2022

nullSample Unit Size: 2.00 g

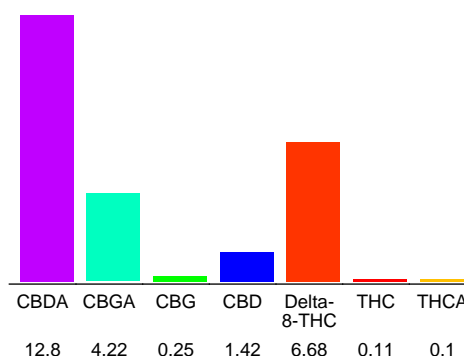
## Caviar Blunts-D8-CBG+CBD 2g Gelato

Plant Material

### Chromatogram



### Cannabinoid Profile



### Cannabinoid Profile by HPLC

**0.20%**

Calculated THC Yield

**12.65%**

Calculated CBD Yield

**25.58%**

Total Cannabinoids

| Cannabinoid                 | % wt         | mg/unit       |
|-----------------------------|--------------|---------------|
| CBDA                        | 12.8         | 256.0         |
| CBGA                        | 4.22         | 84.4          |
| CBG                         | 0.25         | 5.0           |
| CBD                         | 1.42         | 28.4          |
| Delta-8-THC                 | 6.68         | 133.6         |
| THC                         | 0.11         | 2.2           |
| THCA                        | 0.1          | 2.0           |
| <b>Total Cannabinoids</b>   | <b>25.58</b> | <b>511.6</b>  |
| <b>Calculated THC Yield</b> | <b>0.20</b>  | <b>3.95</b>   |
| <b>Calculated CBD Yield</b> | <b>12.65</b> | <b>252.91</b> |

Calculated Maximum THC Yield = THC + 0.877 \* THCA  
 Calculated Maximum CBD Yield = CBD + 0.877 \* CBDA

**Marin Analytics, LLC**

250 Bel Marin Keys Blvd, Suite D4  
Novato, CA 94949

415-936-6477 / sarabiancalana1@gmail.com

**Sara Biancalana**  
Chief Scientist

This sample has been tested by Marin Analytics, LLC using valid testing methodologies and a quality system. Values reported relate only to the sample tested. Marin Analytics, LLC makes no claims as to the efficacy, safety or other risks associated with any detected or non-detected levels of any compounds reported herein. This Certificate shall not be reproduced except in full, without the written approval of Marin Analytics, LLC.