



HHemp.co
info@hhemp.co

Sample 236-092822-530

HHC-Sativa Strawberry Cough+Berry Gelato

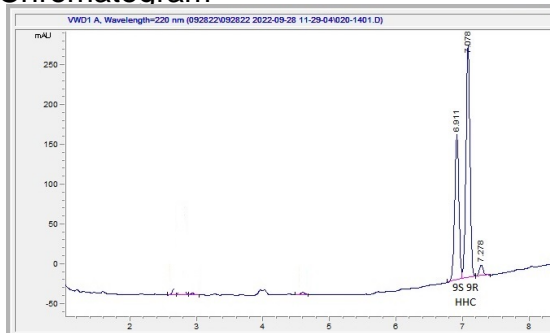
Batch/Lot # CS-1GHS-1094

Sample Submitted: 09-28-2022; Report Date: 09-28-2022

Chief Stix HHC Disposable Pen 1000mg -Strawberry Cough + Berry Gelato - Sativa

Batch/Lot # CS-1GHS-1094

Distillate Chromatogram



Cannabinoid Profile



Cannabinoid Profile by HPLC

0.00%
Calculated Delta-9-THC Yield

0.00%
Calculated CBD Yield

83.80%
Total Cannabinoids

Cannabinoid	% wt	mg/g
9R HHC	54.3	543.0
9S HHC	29.5	295.0
Total Cannabinoids	83.80	838.0
Calculated Delta-9-THC Yield	0.00	0.00
Calculated CBD Yield	0.00	0.00

Calculated Maximum Delta-9-THC Yield = Delta-9-THC + 0.877 * THCA
Calculated Maximum CBD Yield = CBD + 0.877 * CBDA

Marin Analytics, LLC
250 Bel Marin Keys Blvd, Suite D4
Novato, CA 94949

415-936-6477 / sarabiancalana1@gmail.com

Sara Biancalana
Sara Biancalana
Chief Scientist

This sample has been tested by Marin Analytics, LLC using valid testing methodologies and a quality system. Values reported relate only to the sample tested. Marin Analytics, LLC makes no claims as to the efficacy, safety or other risks associated with any detected or non-detected levels of any compounds reported herein. This Certificate shall not be reproduced except in full, without the written approval of Marin Analytics, LLC.