



HHemp.co  
info@hhemp.co

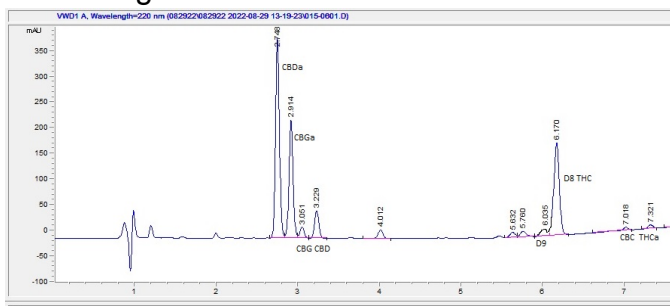
Sample 236-082922-502  
D8 .75g Hybrid-White Runtz+Gorilla Glue  
Sample Submitted: 08-29-2022; Report Date: 08-29-2022

## D8 CBG + CBD Prerolls 5/ct .75g Hybrid-White Runtz+Gorilla Glue

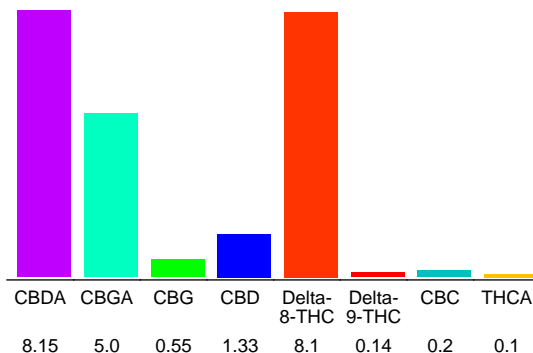
Plant Material: Flower

Batch ID: R-HHC-1226

### Chromatogram



### Cannabinoid Profile



### Cannabinoid Profile by HPLC

**0.23%**

Calculated Delta-9-THC Yield

**8.48%**

Calculated CBD Yield

**23.57%**

Total Cannabinoids

Cannabinoid	% wt	mg/g
CBDA	8.15	81.5
CBGA	5.0	50.0
CBG	0.55	5.5
CBD	1.33	13.3
Delta-8-THC	8.1	81.0
Delta-9-THC	0.14	1.4
CBC	0.2	2.0
THCA	0.1	1.0
<b>Total Cannabinoids</b>	<b>23.57</b>	<b>235.7</b>
<b>Calculated Delta-9-THC Yield</b>	<b>0.23</b>	<b>2.28</b>
<b>Calculated CBD Yield</b>	<b>8.48</b>	<b>84.78</b>
Calculated Maximum Delta-9-THC Yield = Delta-9-THC + 0.877 * THCA		
Calculated Maximum CBD Yield = CBD + 0.877 * CBDA		

**Marin Analytics, LLC**  
250 Bel Marin Keys Blvd, Suite D4  
Novato, CA 94949

415-936-6477 / sarabiancalana1@gmail.com

*Sara Biancalana*  
**Sara Biancalana**  
Chief Scientist

This sample has been tested by Marin Analytics, LLC using valid testing methodologies and a quality system. Values reported relate only to the sample tested. Marin Analytics, LLC makes no claims as to the efficacy, safety or other risks associated with any detected or non-detected levels of any compounds reported herein. This Certificate shall not be reproduced except in full, without the written approval of Marin Analytics, LLC.