



HHemp.co  
info@hhemp.co

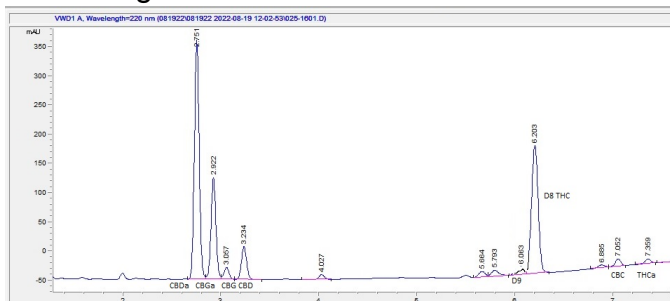
Sample 236-081922-501  
Mini .75 Indica Fire OG+Cloud Burst

Batch/Lot # R-D8-1224

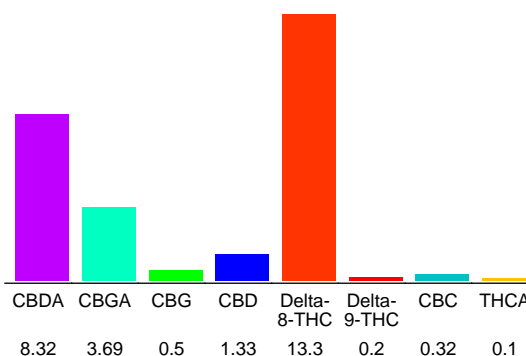
Sample Submitted: 08-19-2022; Report Date: 08-19-2022

D8 CBG+CBD Prerolls .75 5/ct Indica Fire OG+Cloud Burst Batch ID: R-HHC-1224  
Plant Material

## Chromatogram



## Cannabinoid Profile



## Cannabinoid Profile by HPLC

**0.29%**

Calculated Delta-9-THC Yield

**8.63%**

Calculated CBD Yield

**27.76%**

Total Cannabinoids

Cannabinoid	% wt	mg/g
CBDA	8.32	83.2
CBGA	3.69	36.9
CBG	0.5	5.0
CBD	1.33	13.3
Delta-8-THC	13.3	133.0
Delta-9-THC	0.2	2.0
CBC	0.32	3.2
THCA	0.1	1.0
<b>Total Cannabinoids</b>	<b>27.76</b>	<b>277.6</b>
<b>Calculated Delta-9-THC Yield</b>	<b>0.29</b>	<b>2.88</b>
<b>Calculated CBD Yield</b>	<b>8.63</b>	<b>86.27</b>

Calculated Maximum Delta-9-THC Yield = Delta-9-THC + 0.877 \* THCA  
Calculated Maximum CBD Yield = CBD + 0.877 \* CBDA

### Marin Analytics, LLC

250 Bel Marin Keys Blvd, Suite D4  
Novato, CA 94949

415-936-6477 / sarabiancalana1@gmail.com

**Sara Biancalana**  
Chief Scientist

This sample has been tested by Marin Analytics, LLC using valid testing methodologies and a quality system. Values reported relate only to the sample tested. Marin Analytics, LLC makes no claims as to the efficacy, safety or other risks associated with any detected or non-detected levels of any compounds reported herein. This Certificate shall not be reproduced except in full, without the written approval of Marin Analytics, LLC.