



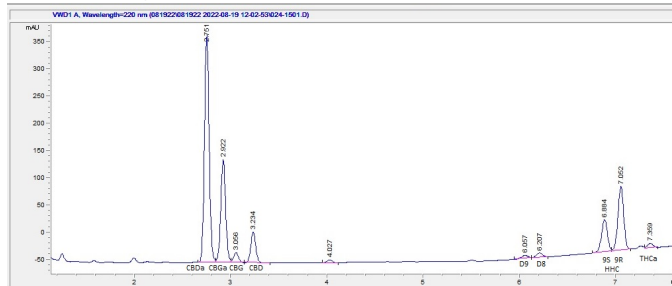
HHemp.co
info@hhemp.co

Sample 236-081922-500
Mini .75 Indica Pink Panties+Cherry Pie
Batch/Lot # R-HHC 1227
Sample Submitted: 08-19-2022; Report Date: 08-19-2022

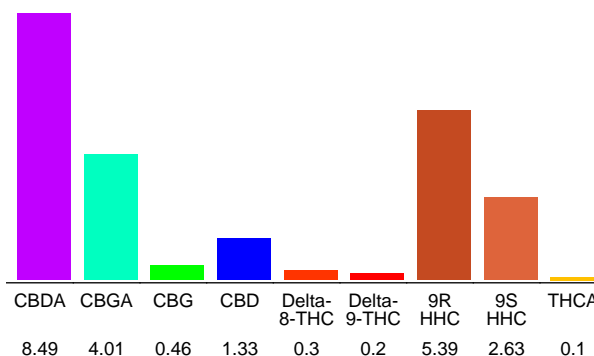
HHC CBG+CBD Prerolls .75 5/ct Indica Pink Panties+Cherry Pie
Plant Material

Batch ID: R-HHC-1227

Chromatogram



Cannabinoid Profile



Cannabinoid Profile by HPLC

0.29%

Calculated Delta-9-THC Yield

8.78%

Calculated CBD Yield

22.91%

Total Cannabinoids

Cannabinoid	% wt	mg/g
CBDA	8.49	84.9
CBGA	4.01	40.1
CBG	0.46	4.6
CBD	1.33	13.3
Delta-8-THC	0.3	3.0
Delta-9-THC	0.2	2.0
9R HHC	5.39	53.9
9S HHC	2.63	26.3
THCA	0.1	1.0
Total Cannabinoids	22.91	229.1
Calculated Delta-9-THC Yield	0.29	2.88
Calculated CBD Yield	8.78	87.76

Calculated Maximum Delta-9-THC Yield = Delta-9-THC + 0.877 * THCA
Calculated Maximum CBD Yield = CBD + 0.877 * CBDA

Marin Analytics, LLC
250 Bel Marin Keys Blvd, Suite D4
Novato, CA 94949

415-936-6477 / sarabiancalana1@gmail.com

Sara Biancalana
Sara Biancalana
Chief Scientist

This sample has been tested by Marin Analytics, LLC using valid testing methodologies and a quality system. Values reported relate only to the sample tested. Marin Analytics, LLC makes no claims as to the efficacy, safety or other risks associated with any detected or non-detected levels of any compounds reported herein. This Certificate shall not be reproduced except in full, without the written approval of Marin Analytics, LLC.