



HHemp.co
info@hhemp.co

Sample 236-080922-477

2ct HHC Indica Pink Panties+Cherry Pie MoonRock PreRoll

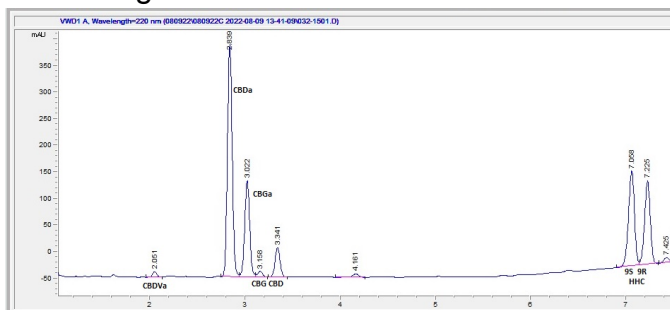
Batch/Lot # R-HHC-0053

Sample Submitted: 08-09-2022; Report Date: 08-09-2022

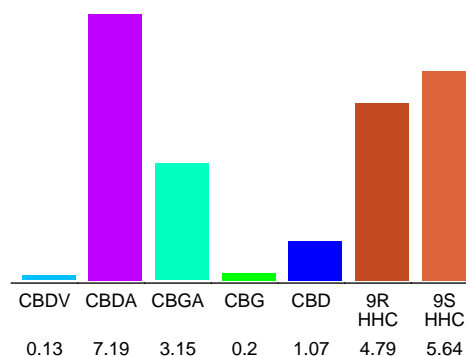
HHC Moonrock Prerolls 2/ct Indica Pink Panties+Cherry Pie
Plant Material

Batch/Lot # R-HHC-0053

Chromatogram



Cannabinoid Profile



Cannabinoid Profile by HPLC

0.00%
Calculated Delta-9-THC Yield

7.38%
Calculated CBD Yield

22.17%
Total Cannabinoids

Cannabinoid	% wt	mg/g
CBDV	0.13	1.3
CBDA	7.19	71.9
CBGA	3.15	31.5
CBG	0.2	2.0
CBD	1.07	10.7
9R HHC	4.79	47.9
9S HHC	5.64	56.4
Total Cannabinoids	22.17	221.7
Calculated Delta-9-THC Yield	0.00	0.00
Calculated CBD Yield	7.38	73.76

Calculated Maximum Delta-9-THC Yield = Delta-9-THC + 0.877 * THCA

Calculated Maximum CBD Yield = CBD + 0.877 * CBDA

Marin Analytics, LLC

250 Bel Marin Keys Blvd, Suite D4
Novato, CA 94949

415-936-6477 / sarabiancalana1@gmail.com

Sara Biancalana
Chief Scientist

This sample has been tested by Marin Analytics, LLC using valid testing methodologies and a quality system. Values reported relate only to the sample tested. Marin Analytics, LLC makes no claims as to the efficacy, safety or other risks associated with any detected or non-detected levels of any compounds reported herein. This Certificate shall not be reproduced except in full, without the written approval of Marin Analytics, LLC.