



HHemp.co
info@hhemp.co

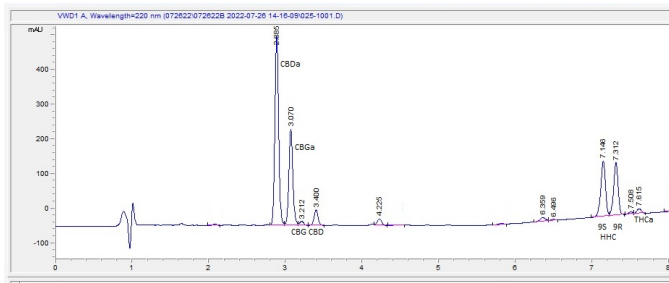
Sample 236-072622-471

F-HHC-0035

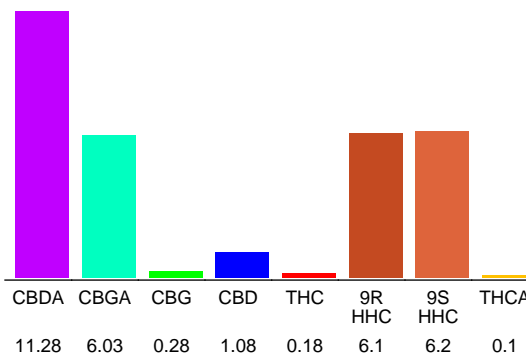
Sample Submitted: 07-26-2022; Report Date: 07-28-2022

HHC CBG+CBD Moonrocks Indica Pink Panties+Cherry Pie1lb,
4g jar, 1.5g pouch Plant Material

Chromatogram



Cannabinoid Profile



Cannabinoid Profile by HPLC

0.27%
Calculated THC Yield

10.97%
Calculated CBD Yield

31.25%
Total Cannabinoids

Cannabinoid	% wt	mg/g
CBDA	11.28	112.8
CBGA	6.03	60.3
CBG	0.28	2.8
CBD	1.08	10.8
THC	0.18	1.8
9R HHC	6.1	61.0
9S HHC	6.2	62.0
THCA	0.1	1.0
Total Cannabinoids	31.25	312.5
Calculated THC Yield	0.27	2.68
Calculated CBD Yield	10.97	109.73

Calculated Maximum THC Yield = THC + 0.877 * THCA
Calculated Maximum CBD Yield = CBD + 0.877 * CBDA

Marin Analytics, LLC
250 Bel Marin Keys Blvd, Suite D4
Novato, CA 94949

415-936-6477 / sarabiancalana1@gmail.com

Sara Biancalana
Sara Biancalana
Chief Scientist

This sample has been tested by Marin Analytics, LLC using valid testing methodologies and a quality system. Values reported relate only to the sample tested. Marin Analytics, LLC makes no claims as to the efficacy, safety or other risks associated with any detected or non-detected levels of any compounds reported herein. This Certificate shall not be reproduced except in full, without the written approval of Marin Analytics, LLC.