



HHemp.co
info@hhemp.co

Sample 236-070523-752
HHC Moonrock - Pink Panties +Cherry Pie

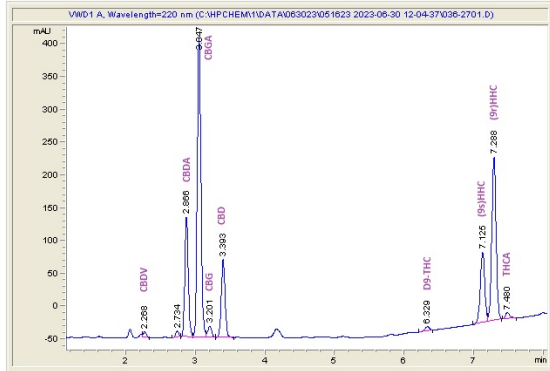
Batch/Lot # F-HHC-1500

Sample Submitted: 07-05-2023; Report Date: 07-10-2023

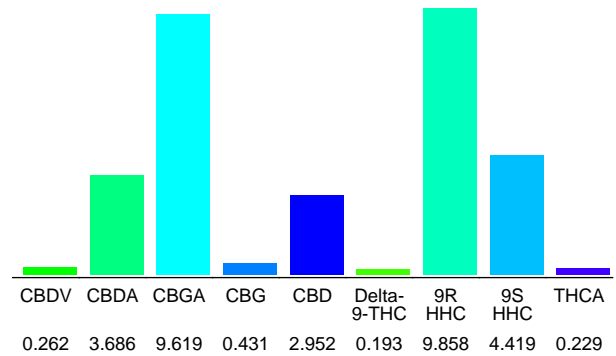
HHC Moonrock - Pink Panties + Cherry Pie 1lb, 4g, 1.5g
Plant Material

Batch/Lot # F-HHC-1500

Chromatogram



Cannabinoid Profile



Cannabinoid Profile by HPLC

0.19%
Delta-9-THC

2.95%
CBD

31.65%
Total Cannabinoids

Cannabinoid	% wt	mg/g
CBDV	0.262	2.62
CBDA	3.686	36.86
CBGA	9.619	96.19
CBG	0.431	4.31
CBD	2.952	29.52
Delta-9-THC	0.193	1.93
9R HHC	9.858	98.58
9S HHC	4.419	44.19
THCA	0.229	2.29
Total Cannabinoids	31.65	316.5
Calculated Total THC	0.39	3.94
Calculated CBD Yield	6.18	61.85
Calculated Total THC = Delta-9-THC + 0.877 * THCA		
Calculated Maximum CBD Yield = CBD + 0.877 * CBDA		

Marin Analytics, LLC
250 Bel Marin Keys Blvd, Suite D4
Novato, CA 94949

833-321-TEST / info@marinanalytics.com

Sara Biancalana

Sara Biancalana
Chief Scientist

This sample has been tested by Marin Analytics, LLC using valid testing methodologies and a quality system. Values reported relate only to the sample tested. Marin Analytics, LLC makes no claims as to the efficacy, safety, or other risks associated with any detected or non-detected levels of any compounds reported herein. This Certificate shall not be reproduced except in full without the written approval of Marin Analytics, LLC. Copyright 2023 Marin Analytics, LLC All Rights Reserved.