



HHemp Co.

Sample 236-041522-215

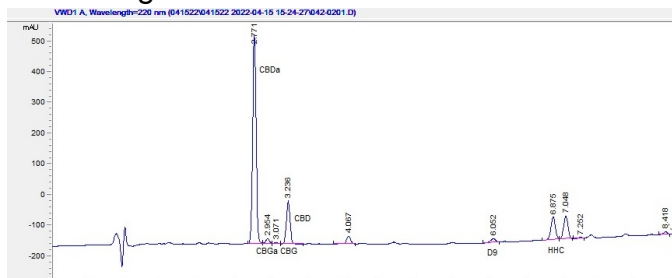
Chief Stix HHC Indica

Sample Submitted: 04-15-2022; Report Date: 04-17-2022

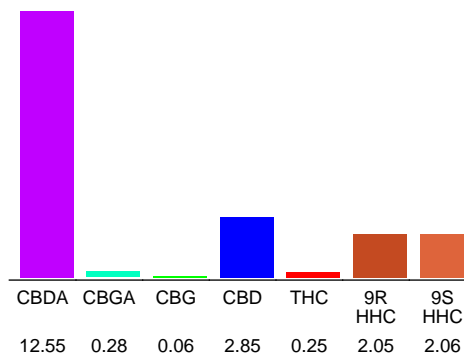
## Chief Stix HHC Indica

Plant Material

### Chromatogram



### Cannabinoid Profile



### Cannabinoid Profile by HPLC

**0.25%**

Calculated THC Yield

**13.86%**

Calculated CBD Yield

**20.10%**

Total Cannabinoids

Cannabinoid	% wt	mg/g
CBDA	12.55	125.5
CBGA	0.28	2.8
CBG	0.06	0.6
CBD	2.85	28.5
THC	0.25	2.5
9R HHC	2.05	20.5
9S HHC	2.06	20.6
<b>Total Cannabinoids</b>	<b>20.10</b>	<b>201.0</b>
<b>Calculated THC Yield</b>	<b>0.25</b>	<b>2.50</b>
<b>Calculated CBD Yield</b>	<b>13.86</b>	<b>138.56</b>

Calculated Maximum THC Yield =  $THC + 0.877 * THCA$   
 Calculated Maximum CBD Yield =  $CBD + 0.877 * CBDA$

**Marin Analytics, LLC**

250 Bel Marin Keys Blvd, Suite D4  
Novato, CA 94949

415-936-6477 / sarabiancalana1@gmail.com

**Sara Biancalana**  
Chief Scientist

This sample has been tested by Marin Analytics, LLC using valid testing methodologies and a quality system. Values reported relate only to the sample tested. Marin Analytics, LLC makes no claims as to the efficacy, safety or other risks associated with any detected or non-detected levels of any compounds reported herein. This Certificate shall not be reproduced except in full, without the written approval of Marin Analytics, LLC.