



HHemp Co.

Sample 236-030122-199

Gelato: Delta 8 Blunt

Batch/Lot # HHBT-1019

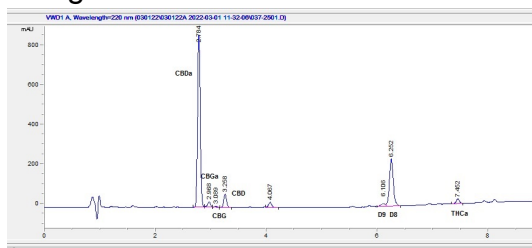
Sample Submitted: 03-01-2022; Report Date: 03-01-2022

## Gelato: Delta 8 Blunt

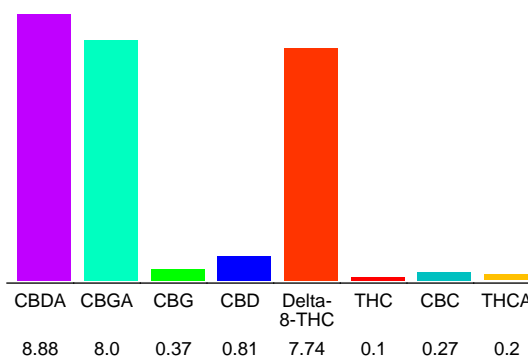
Plant Material

Batch/Lot # HHBT-1019

### Chromatogram



### Cannabinoid Profile



### Cannabinoid Profile by HPLC

**0.28%**  
Calculated THC Yield

**8.60%**  
Calculated CBD Yield

**26.37%**  
Total Cannabinoids

| Cannabinoid                 | % wt         | mg/g         |
|-----------------------------|--------------|--------------|
| CBDA                        | 8.88         | 88.8         |
| CBGA                        | 8.0          | 80.0         |
| CBG                         | 0.37         | 3.7          |
| CBD                         | 0.81         | 8.1          |
| Delta-8-THC                 | 7.74         | 77.4         |
| THC                         | 0.1          | 1.0          |
| CBC                         | 0.27         | 2.7          |
| THCA                        | 0.2          | 2.0          |
| <b>Total Cannabinoids</b>   | <b>26.37</b> | <b>263.7</b> |
| <b>Calculated THC Yield</b> | <b>0.28</b>  | <b>2.75</b>  |
| <b>Calculated CBD Yield</b> | <b>8.60</b>  | <b>85.98</b> |

Calculated Maximum THC Yield = THC + 0.877 \* THCA  
Calculated Maximum CBD Yield = CBD + 0.877 \* CBDA

**Marin Analytics, LLC**  
250 Bel Marin Keys Blvd, Suite D4  
Novato, CA 94949

415-936-6477 / sarabiancalana1@gmail.com

*Sara Biancalana*  
**Sara Biancalana**  
Chief Scientist

This sample has been tested by Marin Analytics, LLC using valid testing methodologies and a quality system. Values reported relate only to the sample tested. Marin Analytics, LLC makes no claims as to the efficacy, safety or other risks associated with any detected or non-detected levels of any compounds reported herein. This Certificate shall not be reproduced except in full, without the written approval of Marin Analytics, LLC.