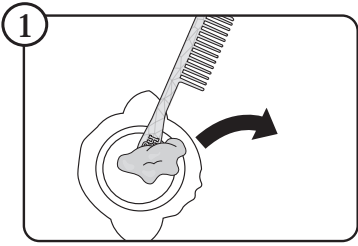
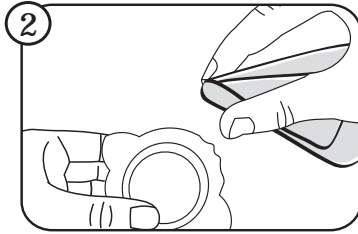


CLEANING



Remove slime from crystal shaker, pet, shoes and purses by using the spoon end of the hair comb.



Clean the crystal shaker, pet, shoes and purses with warm water; wipe down any residue with a wet paper towel (not included) and dry thoroughly.

RAINBOW
HIGH™

SKUs: 503163, 503231, 503408, 503415, 503422, 594598

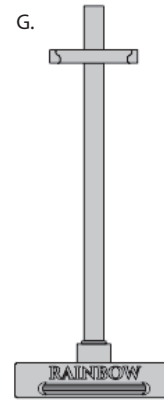
Age 4+

WARNING:
CHOKING HAZARD-Small parts.
Not for children under 3 years.

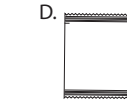
ADULT SUPERVISION RECOMMENDED

CONTENTS

- A. 1 Doll with Fashion Outfit
- B. 1 Pair of Shoes (Holds Slime)
- C. 1 Purse (Holds Slime)
- D. 1 Packet of Slime Powder
- E. 1 Packet of Glitter
- F. 1 Hair Comb
- G. 1 Doll Stand
- H. 1 Crystal Shaker
- I. 1 Pet (Holds Slime)



B.



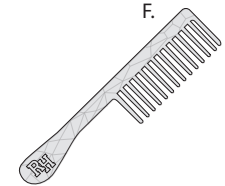
D.



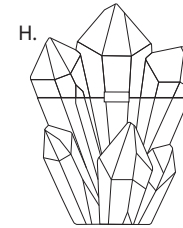
C.



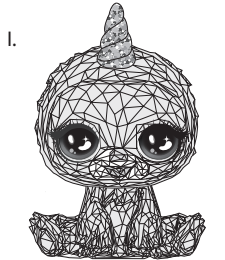
E.



F.



H.



I.

WARNING

- USE UNDER ADULT SUPERVISION. Adult supervision is required when children are playing with water.
- AVOID DIRECT CONTACT WITH EYES. In case of direct contact with eyes, rinse immediately with plenty of water and seek medical advice.
- Do not play with slime with damaged skin.
- Do not eat any of the contents included in this package.
- Do not inhale the contents included in this package.

IMPORTANT INFORMATION

- Not for children under 4 years. Keep out of reach of very young children.
- Water temperature will affect the slime's consistency. Do not use hot water.
- Not all slime will fit inside of the shoes container; store extra slime in the included purse or pet.
- Keep slime away from paper surfaces, as it will stick permanently.
- Wash hands thoroughly after use and keep slime away from clothing and surfaces other than the crystal and slime containers.
- Keep contents away from eyes, mouth and face.
- Tightly close the lid on the slime containers after each use.
- Do not dispose of slime in the drain. Dispose in a trash receptacle once you are finished playing with it.
- If the slime becomes abnormal after it is stored for a long period of time, please dispose immediately and clean the container.
- Clean the crystal shaker and slime containers with warm water. Rinse thoroughly and air dry in a well-ventilated area.
- Slime will dry out over time. Store in a sealed container to prevent drying out easily when not in use.
- DO NOT leave slime in the sun or subject it to heat of any kind.

Illustrations are for reference only. Styles may vary from actual contents.

Please remove all packaging including tags, ties & tacking stitches before giving this product to a child.



0823-0-E
Printed in China

WWW.RAINBOWHIGH.COM
©2023 MGA Entertainment, Inc.
RAINBOW HIGH™ is a trademark of MGA in the U.S. and other countries. All logos, names, characters, likenesses, images, slogans, and packaging appearance are the property of MGA.

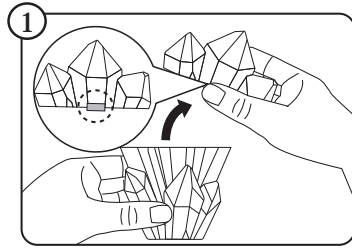
MGA Entertainment, Inc.
9220 Winnetka Ave. Chatsworth, CA 91311
U.S.A.
(800) 222-4685

The preferred method of contact for Customer Service is through our e-mail contact form at www.mgae.com

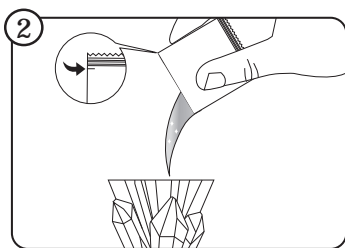
#COLLECTTHERAINBOW

GETTING STARTED

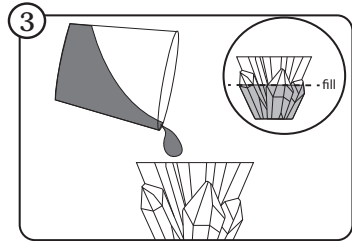
Before beginning, wash and dry hands thoroughly, then cover the play area to prevent possible water damage.



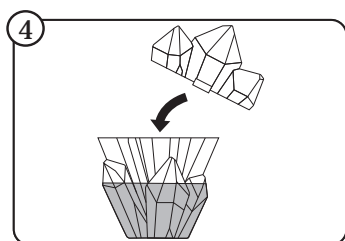
Push up on the tab to open the crystal container.



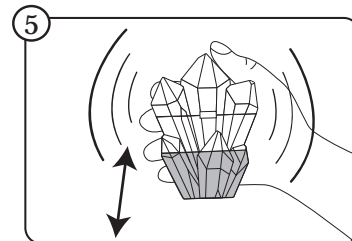
Tear open the packet of slime powder and pour it into the crystal shaker.



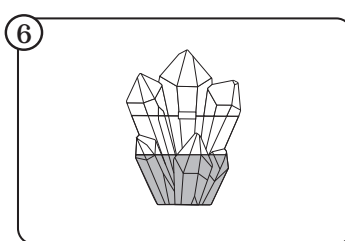
Pour cold water into the crystal shaker up to the fill line (Note: cup not included).



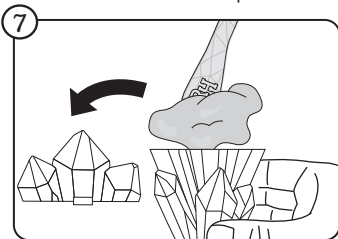
Close the crystal shaker with the lid tightly pressed on.



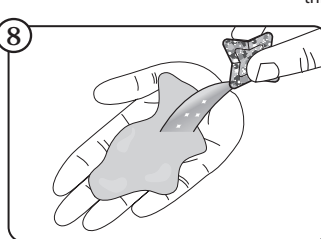
Then, holding down on the lid, rapidly shake the crystal shaker up and down for 1 minute.



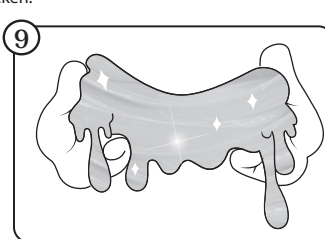
Let the mixture sit for about 15 minutes to allow the slime to thicken.



Open the lid and use the spoon end of the hair comb to scoop out the slime from the crystal shaker.



Open the pack of glitter. Hold the slime in the palm of one hand, then use your other hand to pour the glitter into the center of the slime. **Add the glitter a little at a time.**

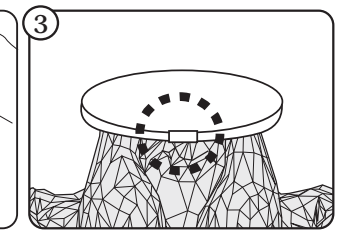
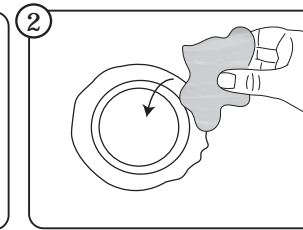
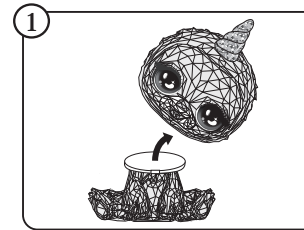


Fold the slime in half and continue folding and pulling the slime until all the glitter is thoroughly blended into the slime.

PETS

Store the slime inside of the hollow head of the pet to customize the look of your pet.

TIP: When closing, align the tab on the neck of the pet with the head to keep your slime securely sealed.



STORAGE CONTAINERS

Store the slime inside of your doll's shoes, purse, or crystal shaker to customize the look; see examples below on how to open your container:

