

! WARNING:

- Keep away from eyes and mouth.
- For use under adult supervision.
- Not for children under 3 years.
- Wash hands thoroughly before and after use.
- Do not ingest mousse.
- Included items are only intended for doll.

IMPORTANT INFORMATION

- Illustrations are for reference only. Styles may vary from actual contents.
- Please keep this manual as it contains important information.
- Before beginning, cover the play area.
- An adult must be present when children are playing with water.
- Do not use hot water to wash the doll's hair.
- Do not store the doll in direct sunlight for extended periods of time.
- Use a dry towel to dry off the hair or allow it to air dry.
- Do not wash hair with soap or subject it to very high heat in any manner, as it will irreparably damage the hair.



AGES 3+

! WARNING:
CHOKING HAZARD-Small parts.
Not for children under 3 years.

SKU: 584285, 584292

ADULT SUPERVISION REQUIRED

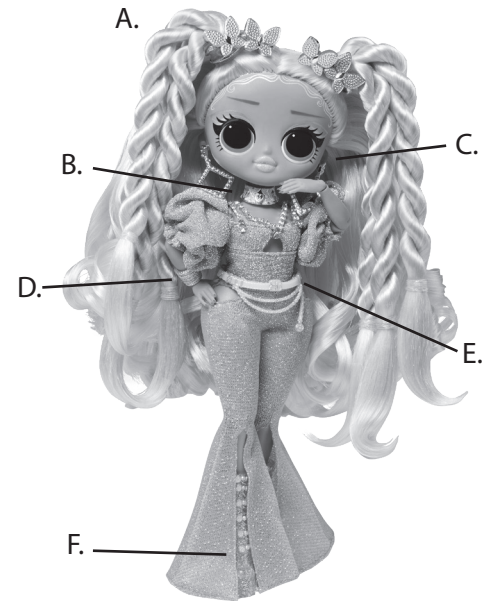
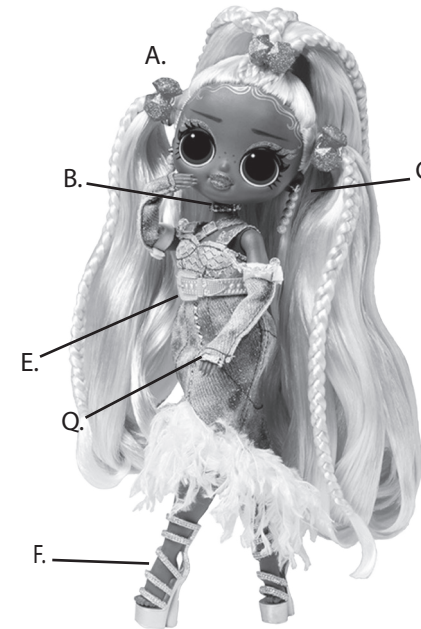
Contents will vary per doll.
Each doll sold separately.

CONTENTS:
HAIR EDITION

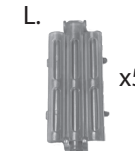
LADY BRAIDS
(584285)

TWIST QUEEN
(584292)

- A. 1 Fashion Show Doll
- B. 1 Choker
- C. 1 Pair of Earrings
- D. 1 Stack of Bangles
(Included only with Twist Queen)
- E. 1 Belt
- F. 1 Pair of Shoes
- G. 1 Pair of Sunglasses
- H. Hair Ballies
- I. 5 Wave Hair Curlers
- J. 6 Rubber Bands
- K. 1 Salon Chair
- L. Crimp Barrette
- M. 1 Comb/Brush
- N. 1 Hair Clip
- O. 1 Styling Mousse (20ml)
- P. 1 Hook Tool
- Q. Diamond Ring Cuff
(Included only with Lady Braids)



Scan to View
Instructional Play:



Please keep this manual as it contains important information.



www.LOLsurprise.com
© 2022 MGA Entertainment, Inc.
L.O.L. SURPRISE! O.M.G.™ and L.O.L. SURPRISE! O.M.G. OUTRAGEOUS
MILLENNIAL GIRLS FASHION SHOW™ are trademarks of MGA in the
U.S. and other countries. All logos, names, characters, likenesses,
images, slogans, and packaging appearance are the property of
MGA.

The preferred method of contact for
Customer Service is through our e-mail
contact form at www.mgae.com

0422-1-E/INT
Printed in China

MGA Entertainment, Inc.
9220 Winnetka Ave. Chatsworth, CA 91311 U.S.A.
(800) 222-4685

MGA Entertainment UK Ltd.
50 Presley Way, Crownhill, Milton Keynes,
MK8 0ES, Bucks, UK
+ 0800 521 558

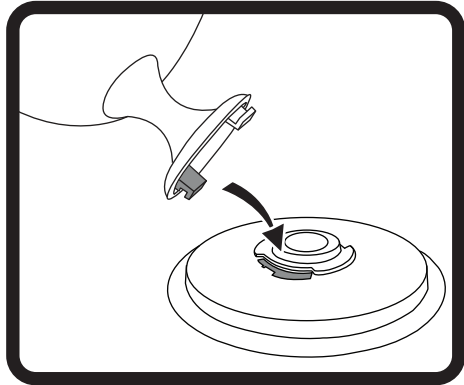
MGA Entertainment (Netherlands) B.V.
Baronie 68-70, 2404 XG Alphen a/d Rijn, The Netherlands
Tel: +31 (0) 172 758038
E-mail: klantenservice@mgae.com

Imported by MGA Entertainment Australia Pty Ltd
Suite 2.02, 32 Delhi Road
Macquarie Park NSW 2113
1300 059 676

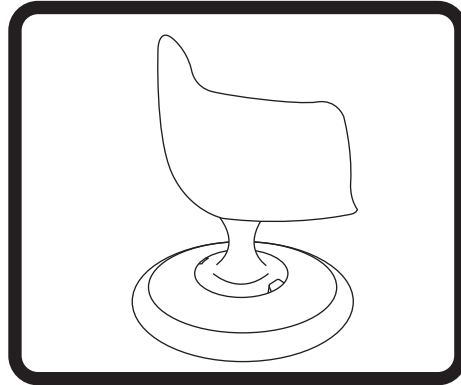
NOTE: Products and accessories are not intended for personal use. Only use on the dolls.

CHAIR ASSEMBLY

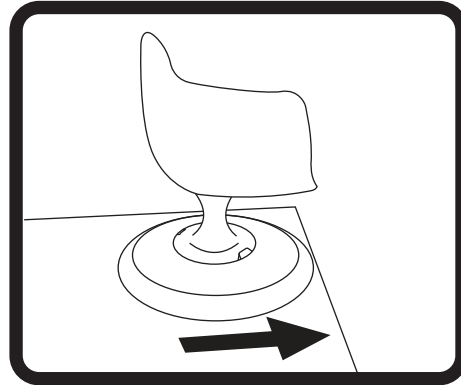
The chair has a suction cup that keeps it stable. Make sure to place it on a smooth, hard surface. Use a glass table top for best results.



Insert the hooks on the chair to the opening on the base.



Twist the chair clockwise to secure it to the base.



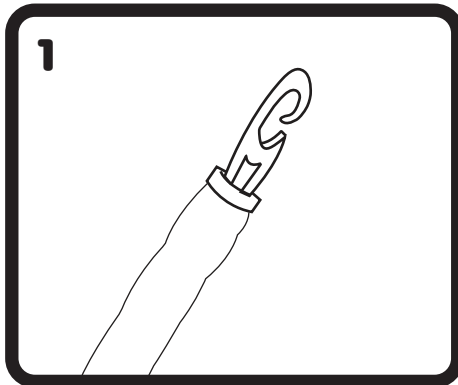
To release the chair, slide it across to the edge of the flat surface to release the suction cup or use the comb's pointed end to lift the suction cup tab.

STYLING HAIR

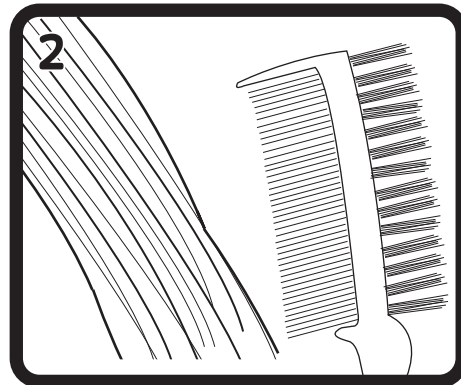
Before beginning, cover the play area.

Note: Mousse is only for doll. Do not use on your own hair.

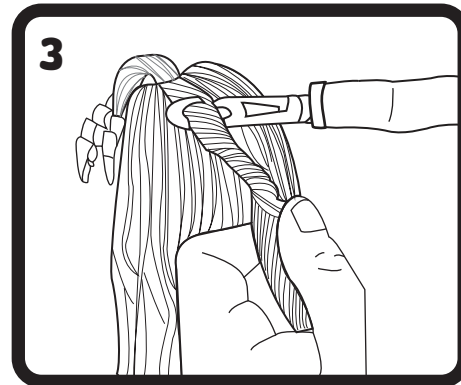
WAVES



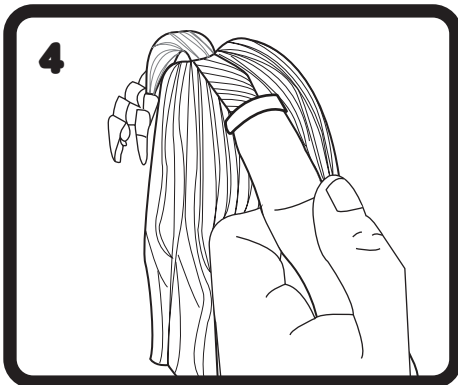
1 Pull the hook tool through the wave hair curler.



2 Prep a small lock of hair with at least two pumps of mousse, brush and comb the hair until it is smooth.

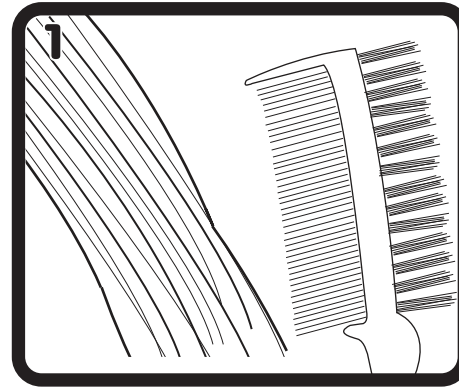


3 Twist the lock of hair at the root of the head. Then, insert the twisted hair into the hook.

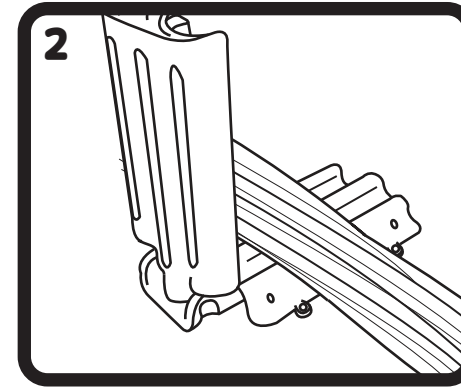


4 Hold onto the wave hair curler and pull the hook tool out of the curler pulling along the hair. Let the hair sit for a minimum of 20 minutes or until dry. Then, slide the hair curler off to reveal wavy hair. **Note: do not use hair dryer or any heat to dry.**

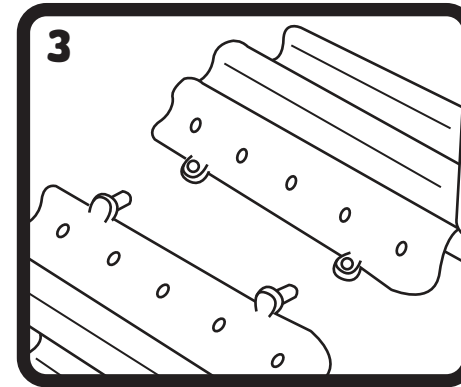
CRIMPED HAIR



1 Prep a lock of hair with at least two pumps of mousse and comb it until smooth.

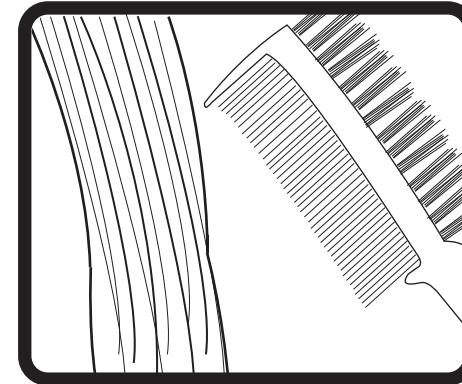


2 Then, place it in the crimp barrette for a minimum of 20 minutes or until dry. **Note: Barrette will not close if you grab too much hair.**

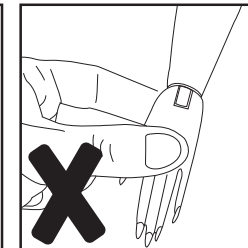
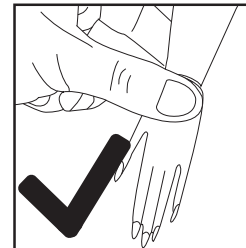


3 Barrettes come with two prongs on one side and two openings on the other. This allows you to connect the barrettes together for a continuous wave.

GO BACK TO STRAIGHT



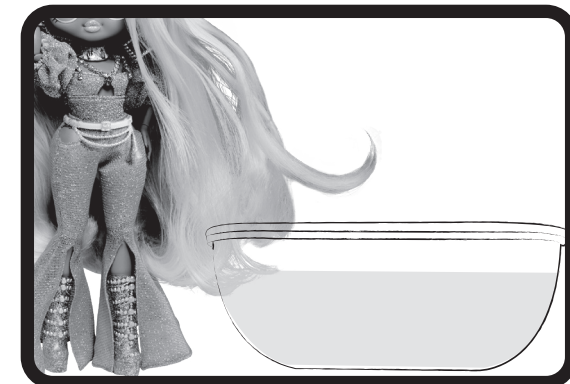
Use one pump of mousse and comb a lock of hair, gently pulling between fingers until it straightens out.



TIP: When removing the hands to dress doll, pinch the wrists' joints and gently pull off. **DO NOT PULL FROM THE FINGERS.**

Your doll is articulated, but the knee joint will need to be loosened. To loosen the knee joint, use slight force to pull leg forward until the knee clicks. Then push the leg back and it will click again.

WASHING YOUR DOLL'S HAIR



To style your doll's hair again, wash out the mousse with **water only**. Do not submerge doll in water. Do not use soap.