



WARNING:
CHOKING HAZARD—Small parts.
Not for children under 3 years

SKU: 584520
AGES 3+
ADULT ASSEMBLY REQUIRED

CONTENTS

- A. 1 Playset
 - 1 Hair Salon
 - 1 Chair
 - 1 Washing Station
 - 1 Juice Bar
 - 1 Drying Station
 - 1 Storage Stool
 - 1 Manicure/Pedicure Chair
- B. 3 Containers
- C. 3 Spray Bottles
- D. 2 Towels
 - 1 Big Towel (OMG Doll)
 - 1 Small Towel (L.O.L. Doll)
- E. 2 L.O.L. Doll Face Masks
- F. 2 OMG Doll Face Masks
- G. 1 Comb
- H. 1 Brush
- I. 2 Hair Curlers
- J. 1 Blow Dryer
- K. 1 Hair Spray
- L. 1 Hair Crimper
- M. 12 Rubber Bands
- N. 4 Hair Clips
- O. 1 Makeup Organizer
- P. 3 Nail Polishes
- Q. 1 Lipstick
- R. 2 Makeup Brushes
- S. 1 Mascara
- T. 1 Water Bottle
- U. 1 Juice Blender
- V. 1 Register
- W. 3 Juice Bottles
- X. 2 Toasts with 2 Plates



VIEW ASSEMBLY VIDEO



Illustrations are for reference only. Styles may vary from actual contents.

Please remove all packaging including tags, ties & tacking stitches before giving this product to a child.

WARNING:

- ADULT ASSEMBLY REQUIRED.
- Prior to assembly, this package contains small parts: screws which are a choking hazard and may contain sharp edges and sharp points. Keep away from children until assembled.
- Avoid placing the Salon and Spa on an uneven surface or anywhere which might offer the possibility of tipping.
- Do not sit, stand, or jump on the Salon and Spa, as doing so may result in bodily injury and/or damage to the unit.
- Not suitable for children under 3 years of age due to size limitations.
- Remove pull tab from drying station before use.
- Keep moisture away from battery compartments.
- Always empty water from the spa and washing station and dry thoroughly before storing.
- Adult supervision is required when children are playing around water.
- Do not allow children to play with water near an electrical source or apparatus in order to avoid electric shock and/or electrocution.
- Do not leave items filled with water near electrical devices.

Please keep this manual as it contains important information.



0622-1-E/INT
Printed in China

www.LOLsurprise.com
©2022 MGA Entertainment, Inc.
L.O.L. SURPRISE!™, L.O.L. SURPRISE! O.M.G. OUTRAGEOUS MILLENNIAL GIRLS™ and SHINE ON SALON & SPA™ are trademarks of MGA in the U.S. and other countries. All logos, names, characters, likenesses, images, slogans, and packaging appearance are the property of MGA.

The preferred method of contact for Customer Service is through our e-mail contact form at www.mgae.com

MGA Entertainment, Inc.
9220 Winnetka Ave, Chatsworth, CA 91311 U.S.A.
(800) 222-4685

MGA Entertainment UK Ltd.
50 Presley Way, Crownhill, Milton Keynes,
MK8 0ES, Bucks, UK
+ 0800 521 558

MGA Entertainment (Netherlands) B.V.
Baronie 68-70, 2404XG, Alphen a/d Rijn,
The Netherlands
Tel: +31 (0) 172 758038

Imported by MGA Entertainment Australia Pty Ltd.
Suite 2.02, 32 Delhi Road
Macquarie Park NSW 2113
1300 059 676



WARNING:

This product contains a button cell battery. A button cell battery can cause severe or fatal injuries in as little as two hours if it is swallowed or placed inside any part of the body. Dispose of used batteries immediately. Keep new and used batteries away from children. If you think batteries might have been swallowed or placed inside any part of the body, seek immediate medical attention.

IMPORTANT NOTES ABOUT BUTTON BATTERIES

- WARNING - KEEP BATTERIES OUT OF REACH OF CHILDREN
- Swallowing may lead to serious injury in as little as 2 hours or death, due to chemical burns and potential perforation of the esophagus.
- If you suspect your child has swallowed or inserted a button battery immediately call the 24-hour Poisons Information Centre on 13 1126 (Australia)/ your local emergency services for fast, expert advice.
- Examine devices and make sure the battery compartment is correctly secured, e.g. that the screw or other mechanical fastener is tightened. Do not use if compartment is not secure.
- Dispose of used button batteries immediately and safely. Flat batteries can still be dangerous.
- Adults shall tell potential users about the risk of button batteries and keep their children away from button cell. Adult supervision is required.

SAFE BATTERY USAGE

- Use alkaline batteries for best performance and longer life.
- Use only the battery type recommended for the unit.
- Batteries should be replaced only by an adult.
- Insert batteries with the correct polarity (+ and -).
- Do not mix old and new batteries.
- Do not mix alkaline, standard (carbon-zinc), or rechargeable batteries.
- Do not short-circuit batteries.
- When not used for an extended time, remove batteries to prevent possible leakage and damage to the unit.
- Do not mix rechargeable and non-rechargeable batteries.
- Rechargeable batteries are to be removed from the toy before charging.
- Rechargeable batteries are to be recharged only under adult supervision.
- Do not recharge non-rechargeable batteries.
- Exhausted batteries are to be removed from the toy.
- Do not dispose of batteries in fire as they may leak or explode.

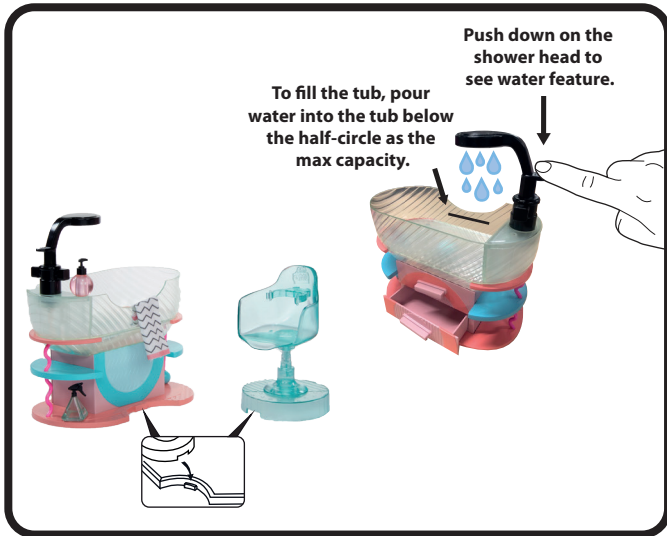


'Let's care for the environment!'
The wheelie bin symbol indicates that the product must not be disposed of with other household waste. Please use designated collection points or recycling facilities when disposing of the item. Do not treat old batteries as household waste. Take them to a designated recycling facility.



FURNITURE AND ACCESSORIES

Before beginning, cover the play area to prevent possible water damage.



Hold the bottom of the chair for easy adjustment of the chair's height.



Note: Drying station uses UV light. Do not stare directly into UV light.

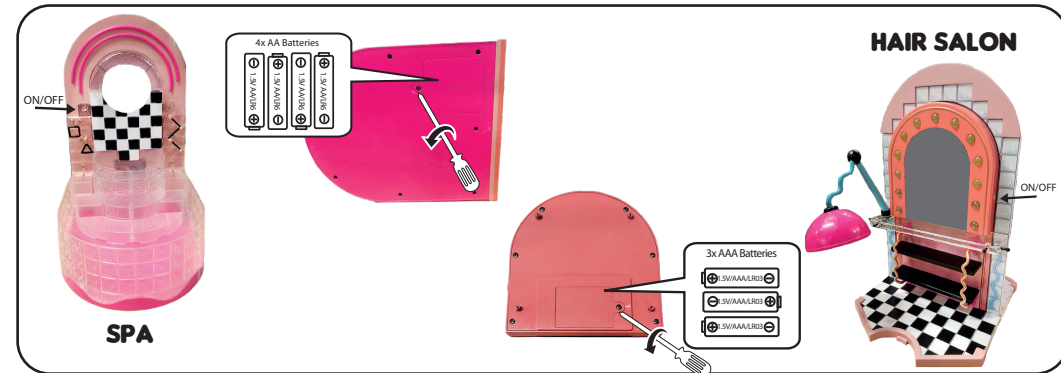


Push the ON button to turn on the waterfall. Push again to turn off.
NOTE: If water splashes outside of spa, turn off the waterfall and dry it with a dry cloth (not included). Then, turn waterfall back on.

BATTERY INSTALLATION

- Before beginning, an adult must install fresh alkaline batteries into the spa and mirror. Here's how:
1. Using a Philips screwdriver (not included) remove the screw and battery compartment cover from under the spa or the back of the mirror.
 2. Install three (3) AAA Alkaline batteries (not included) into the mirror and four (4) AA Alkaline batteries (not included) into the spa, making sure the (+) and (-) ends face the proper direction as indicated inside the battery compartment.
 3. Replace the compartment covers and tighten the screws.

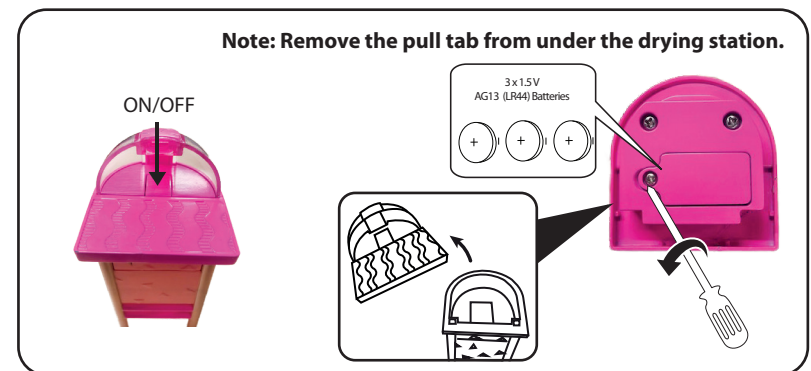
Before playing, push in the ON/OFF button once to turn it on. Push it again to turn it off after playing to conserve battery power.



BATTERY REPLACEMENT

- Before beginning, an adult must install fresh alkaline batteries into the drying station. Here's how:
1. Using a Philips screwdriver (not included) remove the screw and battery compartment cover from under the top of the stand.
 2. Install three (3) 1.5V AG13 (LR44) alkaline batteries (not included), making sure the (+) and (-) ends face the proper direction as indicated inside the battery compartment.
 3. Replace the compartment cover and tighten the screw.

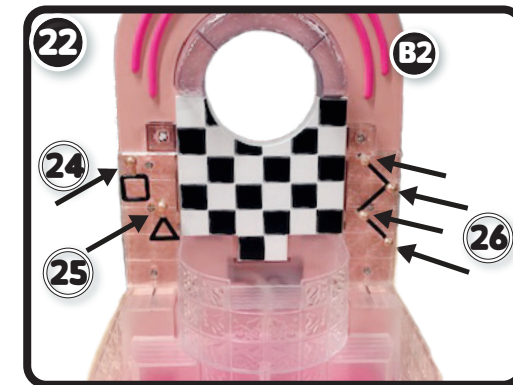
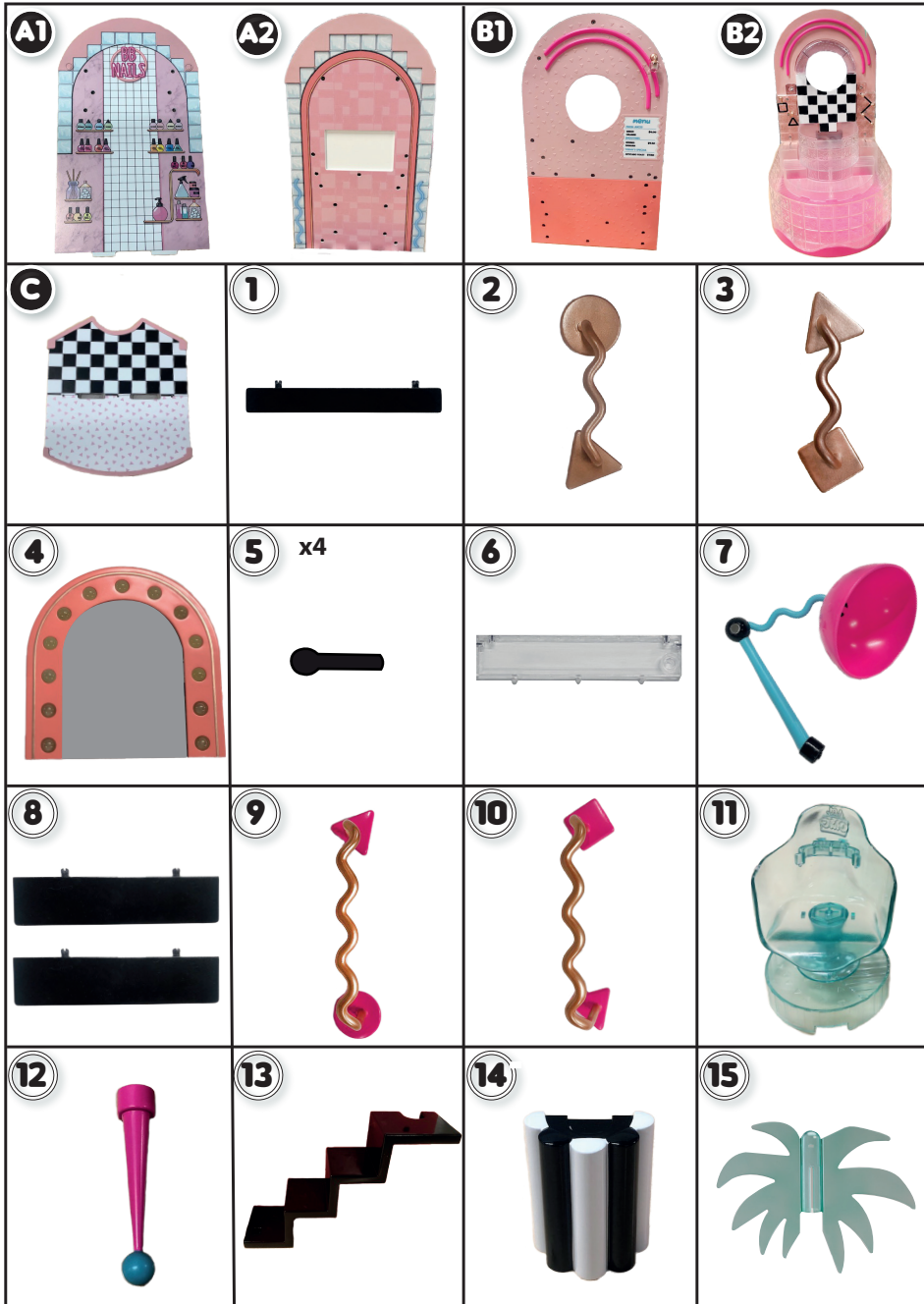
Before playing, push in the ON/OFF button once to turn it on. Push it again to turn it off after playing to conserve battery power.



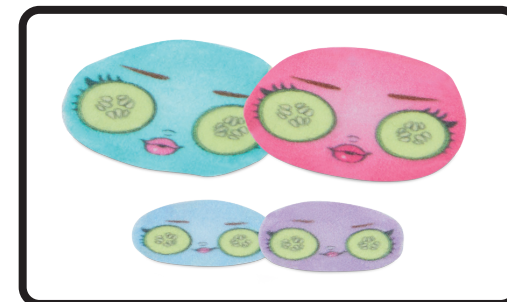
ASSEMBLY PARTS

Before assembling, ensure you have all pieces.

* Extra screws may be included.



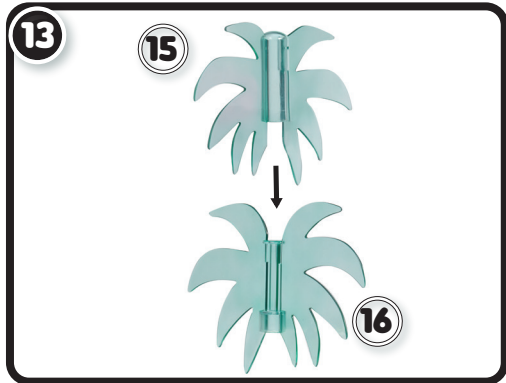
HOW TO USE FACE MASK



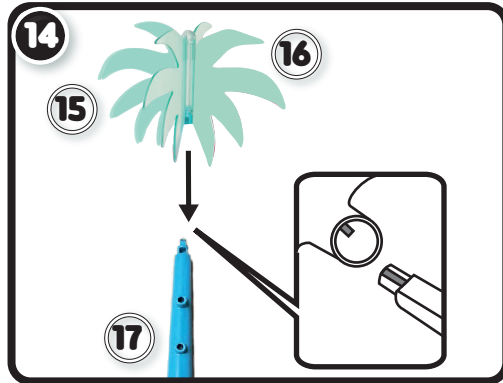
Peel off the backing on the face mask and place the mask on the doll's face. Face mask can be applied up to five times.

Note: Always remove after playing and do not leave on the doll for a long period of time.

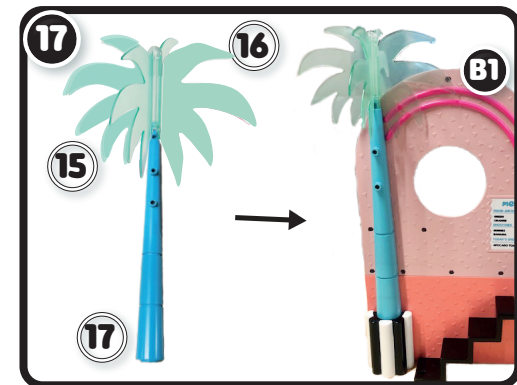
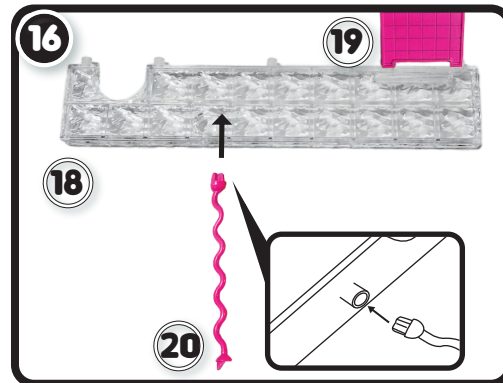
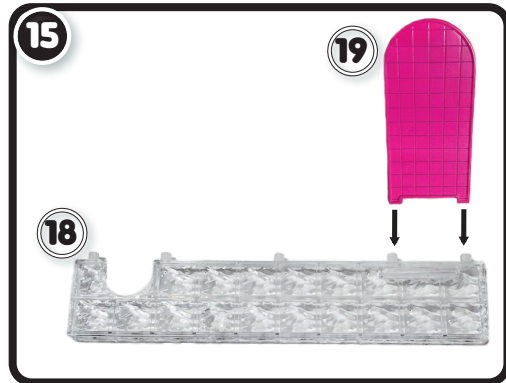
ASSEMBLY PARTS CONTINUED



Note: This is a one-time snap. Once put together it will not separate easily.



Note: This is a one-time snap. Once put together it will not separate easily.



Note: Hold the palm tree up as it can tip over if not secured.



Note: Insert the bottom of piece 20 to the groove on the first step of 13.

ASSEMBLY

ASSEMBLY TIP: When adding the screws, make sure to firmly hold the parts together.

