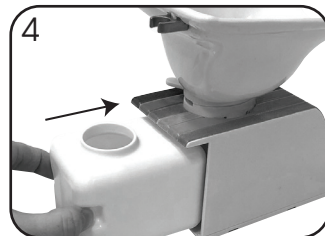
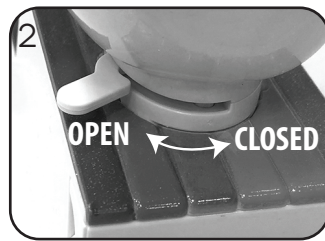
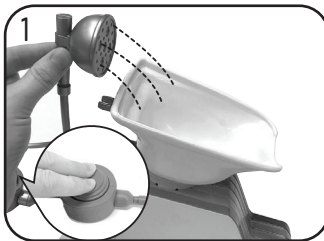


CLEANING

1. Remove any remaining foam from the sink basin. Then, use the pump to rinse it off.
2. **OPEN** the sink basin drain to drain the water and residue into the reservoir.
3. Hold the edge of the sink basin and pull away from you to release it from the base. Remove the sink basin and rinse thoroughly with warm water to remove any residue.
4. Remove the reservoir and pump and rinse them with water. Pump all water out of the hose and shower head. Air dry all pieces thoroughly.



⚠ WARNING

- Do not use glitter hair gel or color foam mixture on eyelashes or eyes. Cosmetics should be used on head hair **ONLY** or the hair of a Rainbow High™ Hair Studio Doll (not included).
- **AVOID CONTACT WITH EYES, MOUTH AND FACE.** In case of contact with the eyes, rinse immediately with plenty of water and seek medical advice if necessary. Cosmetics are for external use only.
- Do not ingest. If swallowed, wash out mouth with water and drink some fresh water. Do not induce vomiting. Seek immediate medical advice.
- These cosmetics are laboratory tested and safe for use as recommended. As with all cosmetics, some individual skin types may experience minor skin irritation. If this occurs, discontinue use and consult a physician if necessary.
- Not for children under 6 years. Keep out of reach of very young children.
- **USE UNDER ADULT SUPERVISION.** Adult supervision is required when children are playing with water.
- Use as directed in these instructions.

IMPORTANT INFORMATION

- The glitter hair gel and color foam mixture included in this playset are to be used **ONLY** on the head hair or the hair of a Rainbow High™ Hair Studio Doll (not included). Not recommended for use on any other type of doll.
- Color transfer from pigments may occur. Wash hands thoroughly before and after use.
- Glitter hair gel and color foam mixture may damage or stain certain fabrics, carpeting, wood finishes or other porous and polished surfaces. Protect or cover any play surface before using.
- Keep glitter hair gel and color foam mixture away from clothing and other surfaces, as pigment transfer may occur.
- Wear a protective layer over your clothing to prevent possible color transfer.
- Distilled water is recommended for use with the playset.
- **DO NOT PUMP FOAM MIXTURE THROUGH THE WASH STATION PUMP.**
- Foam will shrink and dry out over time. Dispose in a trash receptacle after playing. Do not discard in the drain.
- Empty wash station water reservoir after every use. Do not store water in it.
- Wash contents with water. Use a damp cloth to wipe clean. Then, air dry thoroughly in a well-ventilated area.
- Do not leave contents in the sun or in very hot areas.
- Remove cosmetics from your hair and the doll's hair with water. In case any color is left on the hair after rinsing with water, wash with mild shampoo to remove.
- Glitter hair gel is for decoration only.

Please keep this manual as it contains important information.



0420-0-E
Printed in China

WWW.RAINBOWHIGH.COM
©2020 MGA Entertainment, Inc.
RAINBOW HIGH™ is a trademark of MGA in the U.S. and other countries. All logos, names, characters, likenesses, images, slogans, and packaging appearance are the property of MGA.
9220 Winnetka Ave.
Chatsworth, CA 91311 U.S.A.
(800) 222-4685

The preferred method of contact for Customer Service is through our e-mail contact form at www.mgae.com

RAINBOW
HIGH™

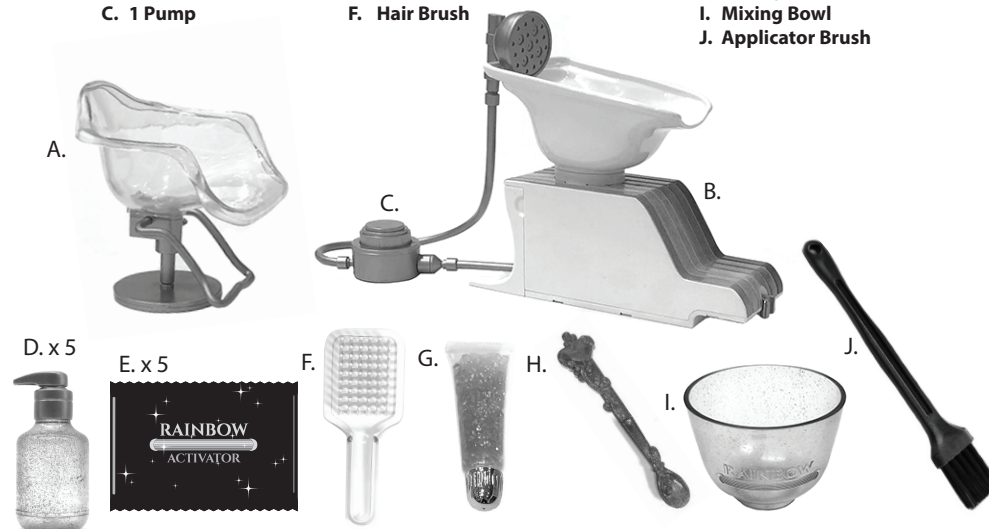
SALON

⚠ **WARNING:**
CHOKING HAZARD—Small parts.
Not for children under 3 years.

Age 6+
SKU: 567448
ADULT SUPERVISION REQUIRED

CONTENTS

- | | | |
|--------------------------|--|----------------------------|
| A. 1 Salon Chair | D. 5 Color Bottles (liquid activator) | G. Glitter Hair Gel |
| B. 1 Wash Station | E. 5 Rainbow Packets (powder activator) | H. Mixing Spoon |
| C. 1 Pump | F. Hair Brush | I. Mixing Bowl |
| | | J. Applicator Brush |



Illustrations are for reference only. Styles may vary from actual contents.

ASSEMBLY



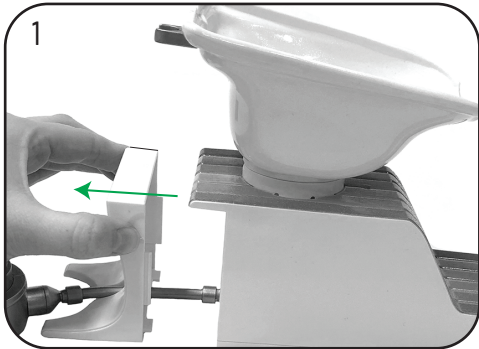
Attach the shower head to the back of the sink basin.



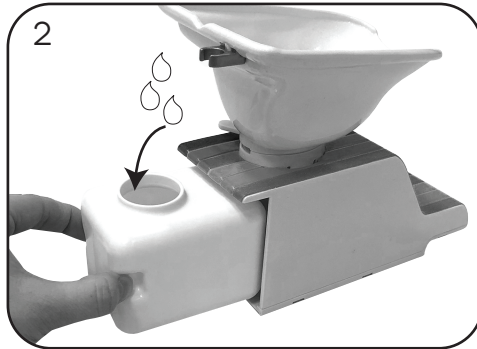
Snap the salon chair onto the front of the wash station so that the chair faces out.

SALON MAKEOVER

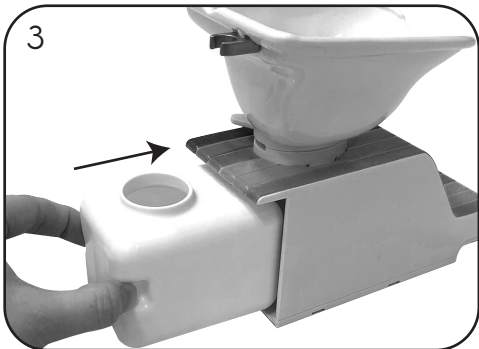
Before beginning, cover the play area and put a protective layer over your clothing to prevent possible damage.



1 Remove the back of the wash station base.



2 Pull out the reservoir attached to the pump and fill the reservoir with room temperature distilled water. Do not use hot water.



3 Replace the reservoir in the station base, and replace the back of the wash station.



4 Ensure that the sink basin drain is in the **CLOSED** position.



5 Choose a color bottle, twist off the lid and pour all of the liquid into the sink basin.



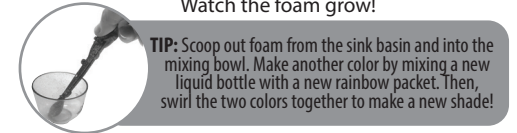
6 Open the matching rainbow packet and pour the powder into the sink basin. **TIP:** The word "ACTIVATOR" should be the same color as the bottle.



7 Mix the liquid and powder activators together thoroughly with the spoon.

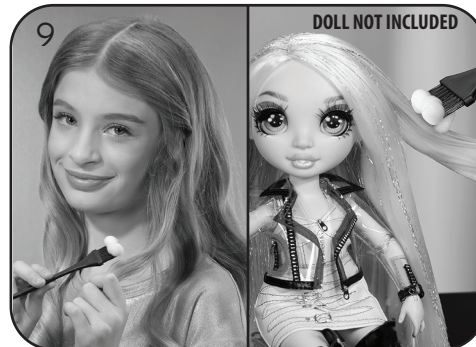


8 Watch the foam grow!



IMPORTANT NOTE:

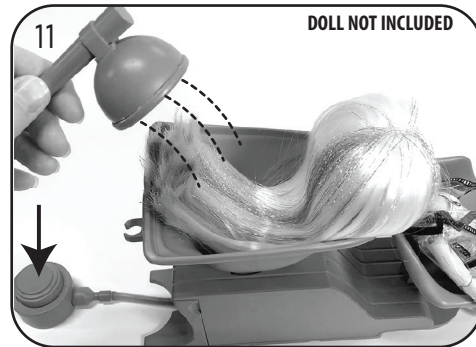
Because all children's hair is not identical, color foam mixture results may vary. Prior to fully using this product, it is advised that you test the mixture by applying it to a small portion of hair in an inconspicuous area, allowing it to air dry, then washing the hair. Several washings may be required to ensure the desired result of complete color removal.



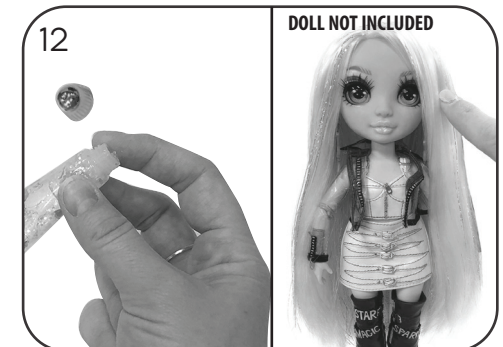
9 Use the applicator brush to apply color foam to sections of your hair. You can also apply to the Rainbow High™ Hair Studio Doll (not included).



10 Ensure that the sink basin drain is in the **CLOSED** position.



11 Place the doll (not included) in the salon chair with her hair in the sink basin. Repeatedly press the pump to wash the color from her hair. Always remove color from hair after playing. **TIP:** If any color remains, wash with mild shampoo.



12 Open the cap on the glitter hair gel, and apply a small amount to your finger. Use your finger to apply gel on sections of hair. Then, replace the cap.