

## IMPORTANT INFORMATION

- If tongs aren't wide enough to grab the ball, slightly pull apart to stretch it out. The angle should match the illustration on page 1. Only stretch it once to the correct angle and avoid pulling with excessive force.
- Do not allow long hair or loose apparel, such as shoestrings, near the moving conveyor belt.
- Switch from the ON position to the OFF position after playing to conserve battery power.
- If factory is not working as it should, turn it OFF and then back ON or replace the batteries.
- Clean with a damp cloth and air dry thoroughly. Keep water away from the battery compartment.

## SAFE BATTERY USAGE

- Use alkaline batteries for best performance and longer life.
- Use only the type battery recommended for the unit.
- Batteries should be replaced only by an adult.
- Insert batteries with the correct polarity (+ and -).
- Do not mix old and new batteries.
- Do not mix alkaline, standard (carbon-zinc), or rechargeable batteries.
- The supply terminals are not to be short-circuited.
- When not used for an extended time, remove batteries to prevent possible leakage and damage to the unit.
- Do not mix rechargeable and non-rechargeable batteries.
- Rechargeable batteries are to be removed from the toy before charging.
- Rechargeable batteries are to be recharged only under adult supervision.
- Do not recharge non-rechargeable batteries.
- Exhausted batteries are to be removed from the toy.
- Do not dispose of batteries in fire as they may leak or explode.

## FCC COMPLIANCE

NOTE: This equipment has been tested and found to comply with the limits for a Class B digital device, pursuant to Part 15 of the FCC Rules. These limits are designed to provide reasonable protection against harmful interference in a residential installation. This equipment generates, uses and can radiate radio frequency energy and, if not installed and used in accordance with the instructions, may cause harmful interference to radio communications. However, there is no guarantee that interference will not occur in a particular installation. If this equipment does cause harmful interference to radio or television reception, which can be determined by turning the equipment off and on, the user is encouraged to try to correct the interference by one or more of the following measures:

- Reorient or relocate the receiving antenna.
- Increase the separation between the equipment and receiver.
- Connect the equipment into an outlet on a circuit different from that to which the receiver is connected.
- Consult the dealer or an experienced radio/TV technician for help.

This device complies with Part 15 of the FCC Rules. Operation is subject to the following two conditions: (1) This device may not cause harmful interference, and (2) this device must accept any interference received, including interference that may cause undesired operation.

Caution: Modifications not authorized by the manufacturer may void users authority to operate this device. CAN ICES-3 (B)/NMB-3(B).



'Let's care for the environment!'  
The wheelie bin symbol indicates that the product must not be disposed of with other household waste. Please use designated collection points or recycling facilities when disposing of the item. Do not treat old batteries as household waste. Take them to a designated recycling facility.

Please keep this manual as it contains important information.

www.LOLsurprise.com  
©2018 MGA Entertainment, Inc.  
L.O.L. SURPRISE!™ and FASHION FACTORY™ are trademarks of MGA in the U.S. and other countries. All logos, names, characters, likenesses, images, slogans, and packaging appearance are the property of MGA.

16300 Roscoe Blvd.  
Van Nuys, CA 91406  
U.S.A.  
(800) 222-4685

Printed in China

MGA Entertainment UK Ltd.  
50 Presley Way, Crownhill,  
Milton Keynes, MK8 0ES  
Bucks, UK  
+ 0800 521 558

The preferred method of contact for Customer Service is through our e-mail contact form at [www.mgae.com](http://www.mgae.com)



555117

# FASHION FACTORY™

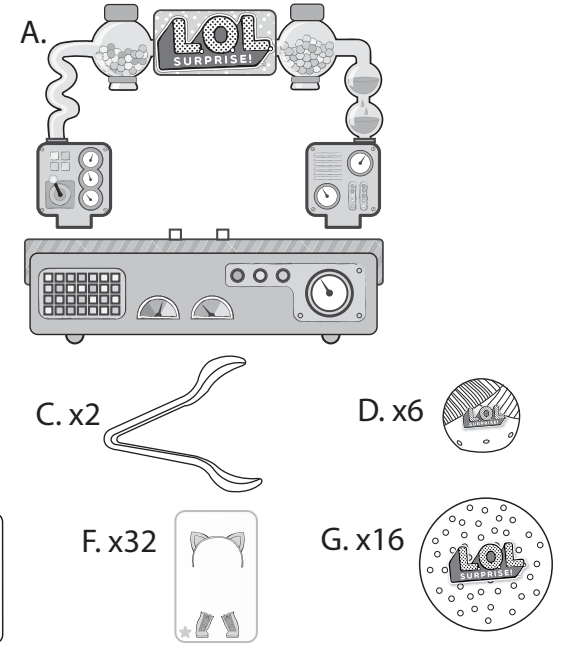
AGES 5+  
FOR 2 PLAYERS

**WARNING:**  
CHOKING HAZARD—Toy contains a small ball & small parts.  
Not for children under 3 years.

ADULT SUPERVISION RECOMMENDED.  
ADULT BATTERY INSTALLATION REQUIRED.

## CONTENTS

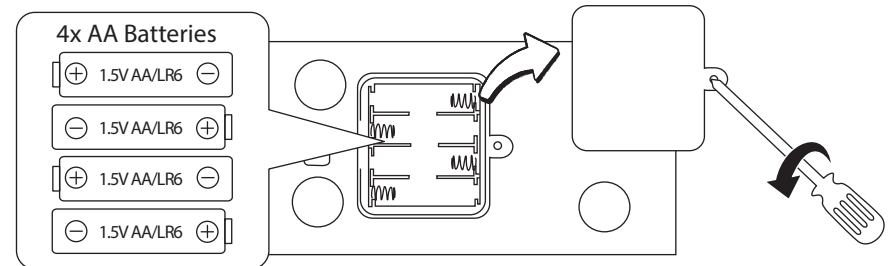
- A. 1 Fashion Factory™ with Arch
- B. 2 Eye Spy Lenses
- C. 2 Tongs
- D. 6 Mini L.O.L. Surprise!™ Balls
- E. 16 Fashion Cards
- F. 32 Transparent Fashion Cards
- G. 16 Character Cards

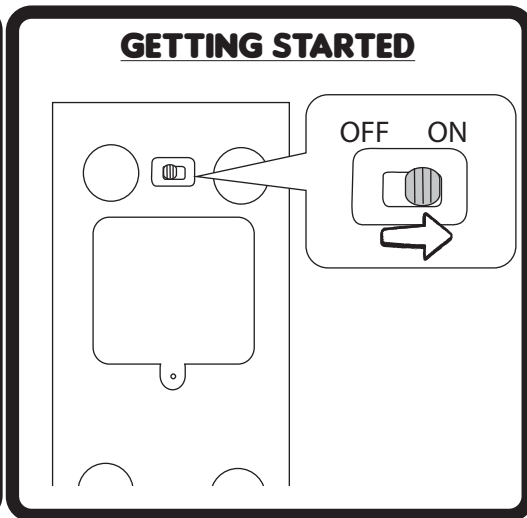
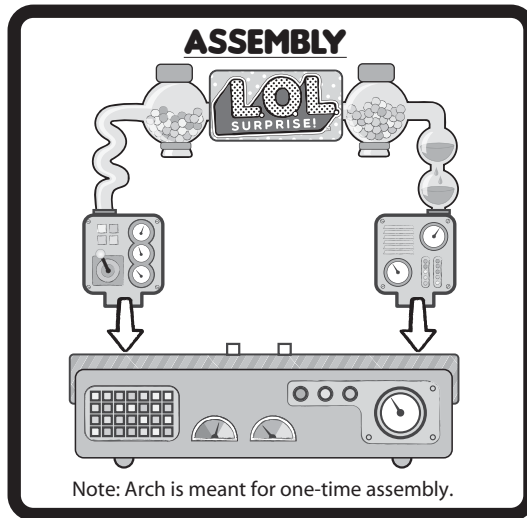


Illustrations are for reference only. Styles may vary from actual contents.

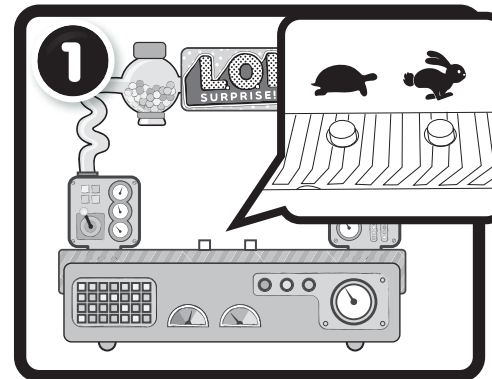
## BATTERY INSTALLATION

- Before playing, an adult must install fresh alkaline batteries in the factory. Here's how:
1. Using a Phillips screwdriver (not included), remove the screw and battery compartment cover located under the factory.
  2. Install four (4) fresh 1.5V AA (LR6) alkaline batteries (not included) making sure the (+) and (-) ends face the proper direction as indicated inside the battery compartment.
  3. Replace the compartment and tighten the screw.

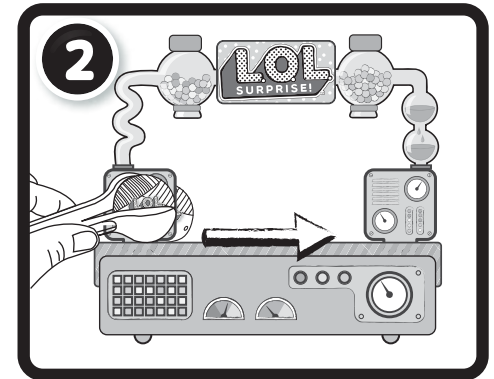




## QUICK START



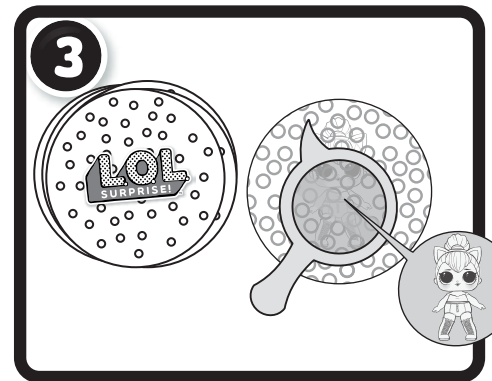
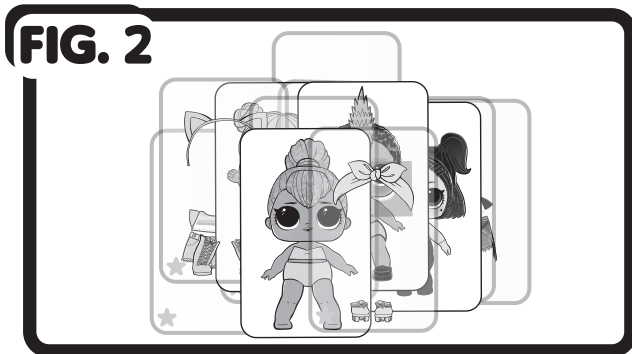
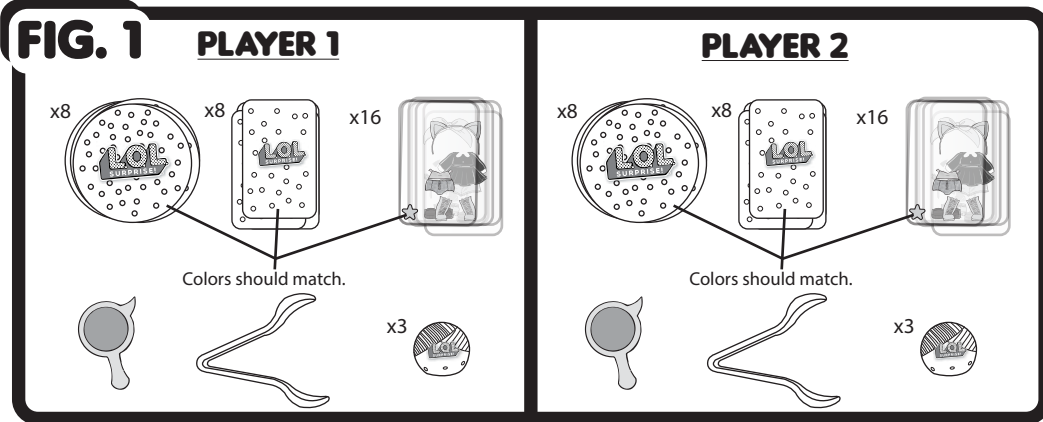
Press a speed button on the factory. Choose the turtle for beginners or the rabbit for experts. Press the same button to stop the conveyor belt.



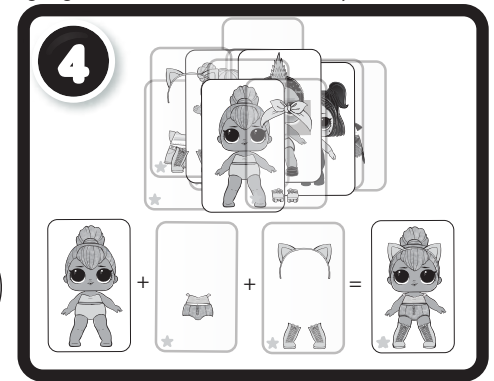
Grab a game ball with the tongs and place it at the start of the conveyor belt. Each player should only place one ball for each round and only use the tongs to move the ball around. Both balls should be placed opposite from each other and going in the same direction as the conveyor belt.

## SETUP

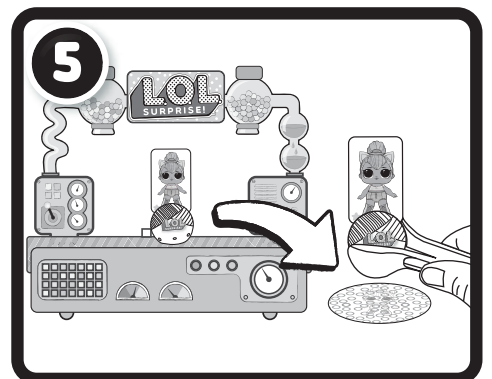
- Place the factory on a flat surface in the middle of participating players. Each player will sit in front of a conveyor belt.
- Separate the character cards, fashion cards and transparent fashion cards by their respective color.
- Each player will get a total of 8 character cards, 8 fashion cards and 16 transparent fashion cards. Each player will also get 3 mini L.O.L. Surprise!™ balls, 1 tong and 1 Eye Spy lens. (Fig. 1)
- Mix up the fashion cards with the transparent fashion cards. Scatter the cards face up in front of you. (Fig. 2)
- Place the character cards face down in front of you.



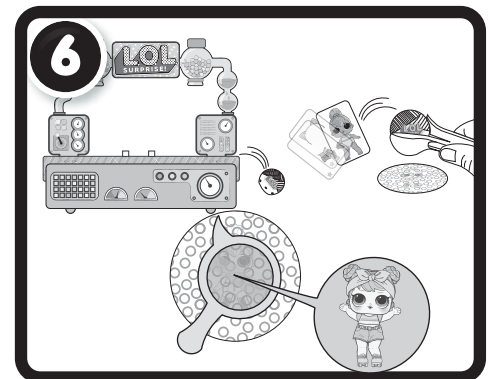
Quickly flip over a character card and use the lens to reveal the character.



Search through the scattered cards to match the character before the ball falls off the conveyor belt. You will need a total of three cards to make up one character: the character, the outfit, and the shoes with accessory.



Place the transparent cards in front of the fashion card. Then, insert them into the slit on the ball while it is still on the conveyor belt. Use the tongs to remove the ball with the completed character and place it on top of the character card. The first player to complete three characters wins!



If the ball falls off the conveyor belt before finding all three cards, or if the completed character falls off the ball, set aside the character card, place the ball back on the conveyor belt and flip over a new character card to create a different character.