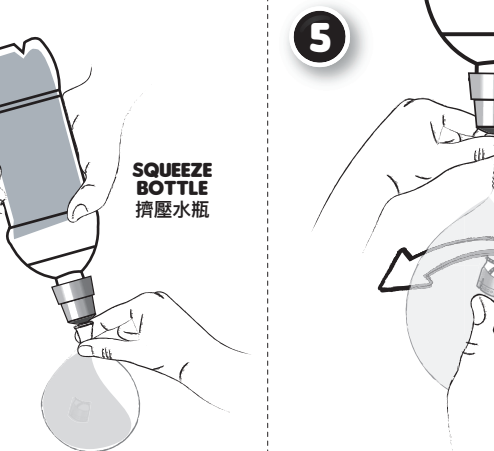
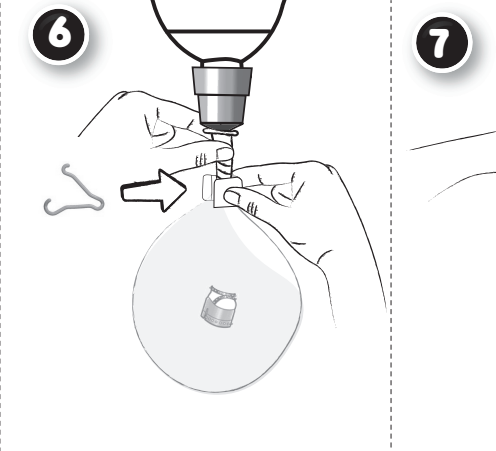


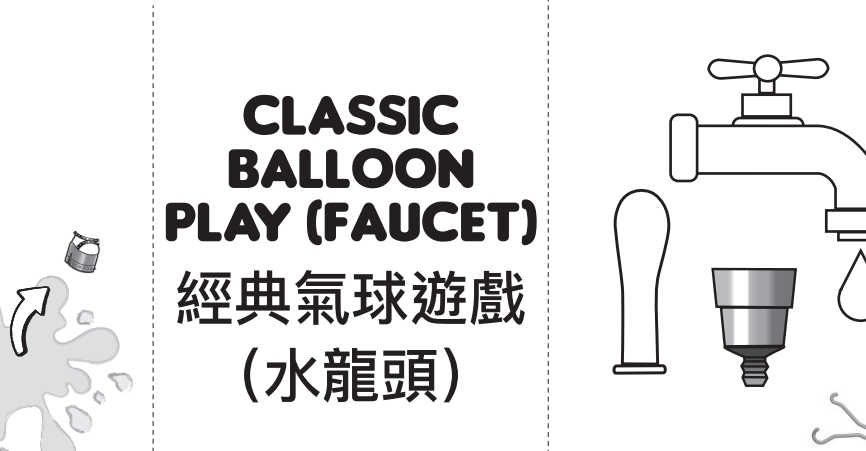
4



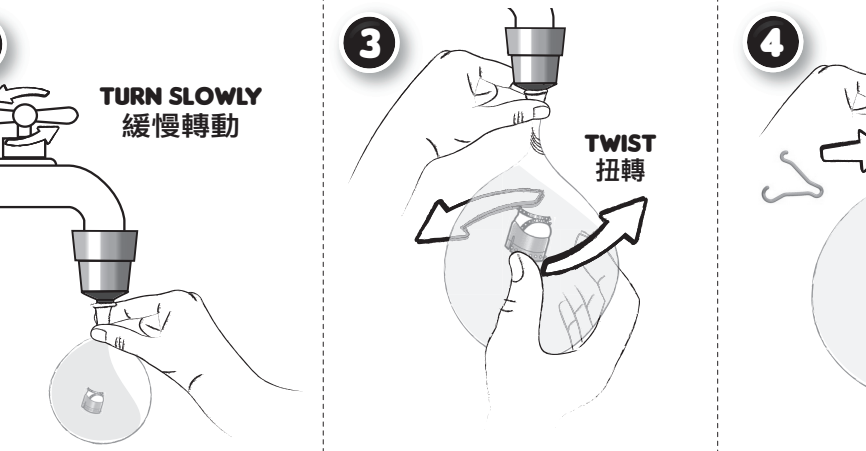
5



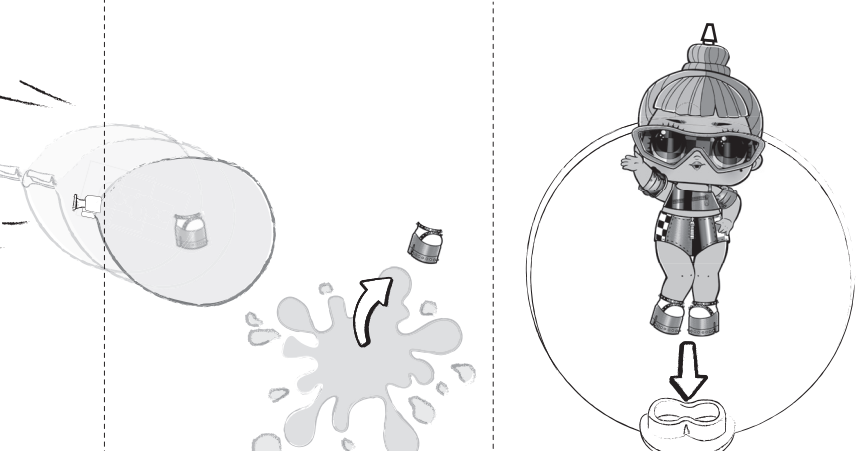
6



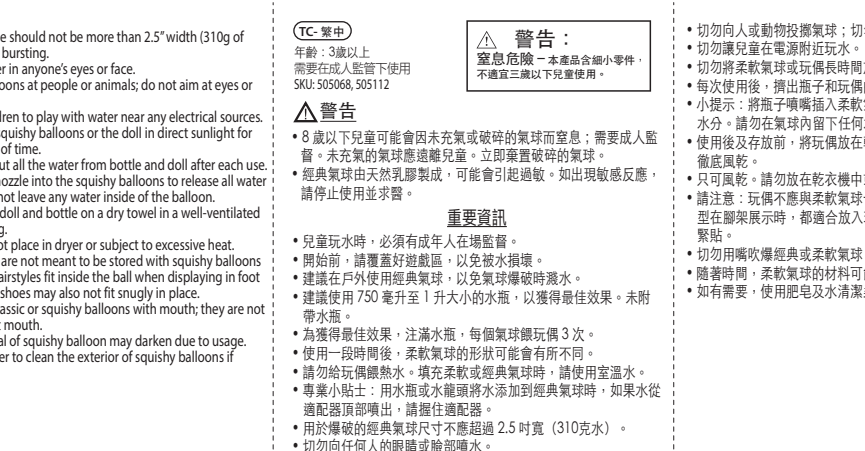
7



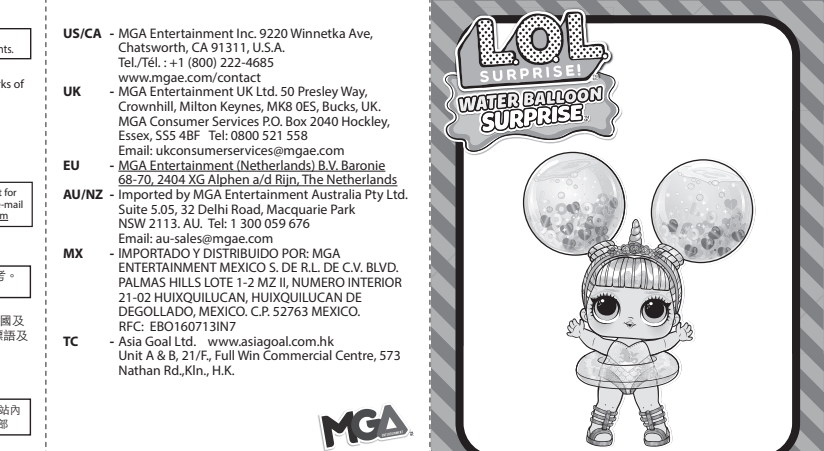
1



2



3



4



5



# CLASSIC BALLOON PLAY (FAUCET)

# 經典氣球遊戲 (水龍頭)



**SQUEEZE BOTTLE**  
擠壓水瓶

**TWIST 扭轉**

**TWIST 扭轉**

**FOLD UPWARD**  
向上摺疊

**TURN SLOWLY**  
緩慢轉動

**TWIST 扭轉**

**TWIST 扭轉**

**IMPORTANT INFORMATION**

• Children under 8 years can choke or suffocate on uninflated or broken balloons; adult supervision required. Keep uninflated balloons from children. Discard broken balloons at once.  
• Classic balloons are made from natural rubber latex which may cause allergies. If this occurs, discontinue use and seek medical advise.

- TC- 雙中**  
年齡：3歲以上  
需要在成人監督下使用  
SKU: 505068, 505112
- 警告：**  
窒息危險 - 本產品含細小零件，不適當三歲以下兒童使用。
- 警告**  
• 8 歲以下兒童可能會因未充氣或破碎的氣球而窒息，需要成人監督。未充氣的氣球應遠離兒童。立即棄置破碎的氣球。  
• 經典氣球由天然乳膠製成，可能會引起過敏。如出現敏感反應，請停止使用並求醫。
- 重要資訊**  
• 兒童玩水時，必須有成年人在場監督。  
• 開始前，請覆蓋好遊戲區，以免被水損壞。  
• 建議在戶外使用經典氣球，以免氣球爆破時澆水。  
• 建議使用 750 毫升至 1 升大小的水瓶，以獲得最佳效果。未附帶水瓶。  
• 為獲得最佳效果，注滿水瓶，每個氣球餵玩偶 3 次。  
• 使用一段時間後，柔軟氣球的形狀可能會有所不同。  
• 請勿給玩偶餵熱水。填充柔軟或經典氣球時，請使用室溫水。  
• 專業小貼士：用水瓶或水龍頭將水添加到經典氣球時，如果水從適配器頂部噴出，請握住適配器。  
• 用於爆破的經典氣球尺寸不應超過 2.5 吋寬 (310克水)。  
• 切勿向任何人的眼睛或臉部噴水。

- Classic balloon size should not be more than 2.5" width (310g of water) for balloon bursting.
- Do not spray water in anyone's eyes or face.
- Do not throw balloons at people or animals; do not aim at eyes or face.
- Do not allow children to play with water near any electrical sources.
- Do not leave the squishy balloons or the doll in direct sunlight for extended periods of time.
- Always squeeze out all the water from bottle and doll after each use.
- TIP: Insert bottle nozzle into the squishy balloons to release all water from balloon. Do not leave any water inside of the balloon.
- Thoroughly drain doll and bottle on a dry towel in a well-ventilated area before storing.
- Air dry only. Do not place in dryer or subject to excessive heat.
- Please note: Dolls are not meant to be stored with squishy balloons on. Not all doll's hairstyles fit inside the ball when displaying in foot stand. Some style shoes may also not fit snugly in place.
- Do not blow up classic or squishy balloons with mouth; they are not intended to put at mouth.
- Over time, material of squishy balloon may darken due to usage.
- Use soap and water to clean the exterior of squishy balloons if needed.

**EN** Please keep this manual as it contains important information. Illustrations are for reference only. Styles may vary from actual contents.  
© 2023 MGA Entertainment, Inc. L.O.L. SURPRISE™ and WATER BALLOON SURPRISE™ are trademarks of MGA in the U.S. and other countries. All logos, names, characters, likenesses, images, slogans, and packaging appearance are the property of MGA.  
**Printed in China**  
The preferred method of contact for Customer Service is through our e-mail contact form at [www.mgae.com](http://www.mgae.com)

**TC- 雙中**  
本說明書含有重要資訊，請妥善保留。示範圖片僅供參考。實際產品的造型可能有所不同。

© 2023 MGA Entertainment Inc. L.O.L. SURPRISE™ 及 WATER BALLOON SURPRISE™ 為 MGA 在美國及其他國家的商標。所有標誌、名稱、角色、照片、圖像、標語及包裝外觀均為 MGA 的財產。  
中國印刷  
建議使用 [www.mgae.com](http://www.mgae.com) 網站內的電郵表格聯絡顧客服務部

**US/CA** - MGA Entertainment Inc. 9220 Winnetka Ave, Chatsworth, CA 91311, U.S.A. Tel./Tél.: +1 (800) 222-4685 [www.mgae.com/contact](http://www.mgae.com/contact)

**UK** - MGA Entertainment UK Ltd. 50 Presley Way, Crownhill, Milton Keynes, MK8 0ES, Bucks, UK. MGA Consumer Services P.O. Box 2040 Hockley, Essex, S55 4BF Tel: 0800 521 558 Email: [ukconsumerservices@mgae.com](mailto:ukconsumerservices@mgae.com)

**EU** - MGA Entertainment (Netherlands) B.V. Baronië 68-70, 2404 XG Alphen a/d Rijn, The Netherlands Email: [au-sales@mgae.com](mailto:au-sales@mgae.com)

**AU/NZ** - Imported by MGA Entertainment Australia Pty Ltd. Suite 5.05, 32 Delhi Road, Macquarie Park NSW 2113, AU. Tel: 1 300 059 676 Email: [au-sales@mgae.com](mailto:au-sales@mgae.com)

**MX** - IMPORTADO Y DISTRIBUIDO POR: MGA ENTERTAINMENT MEXICO S. DE R.L. DE C.V. BLVD. PALMAS HILLS LOTE 1-2 M2 II, NUMERO INTERIOR 21-02 HUIXQUILUCAN, HUIXQUILUCAN DE DEGOLLADO, MEXICO. C.P. 52763 MEXICO. RFC: EBO160713IN7

**TC** - Asia Goal Ltd. [www.asiagoal.com.hk](http://www.asiagoal.com.hk) Unit A & B, 21/F, Full Win Commercial Centre, 573 Nathan Rd., Kln., H.K.

**MGA**

0923-0-TC

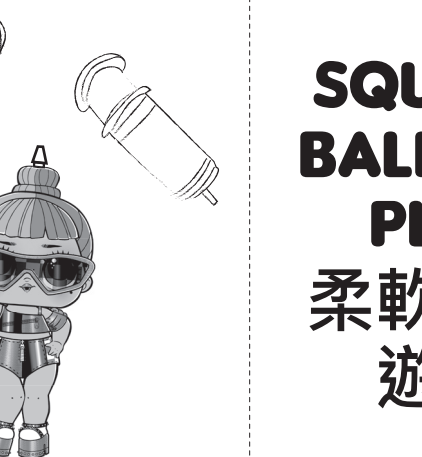


[www.LOLsurprise.com](http://www.LOLsurprise.com)



SCAN FOR VIDEO

掃描以觀看短片

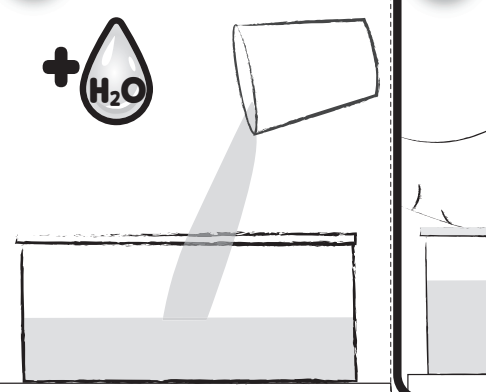


# SQUISHY BALLOON PLAY

## 柔軟氣球遊戲

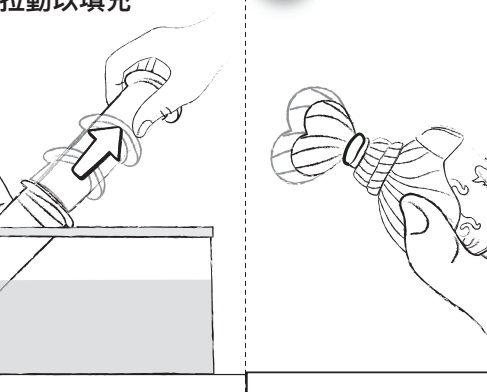
1

CLICK! 喀噠!



2

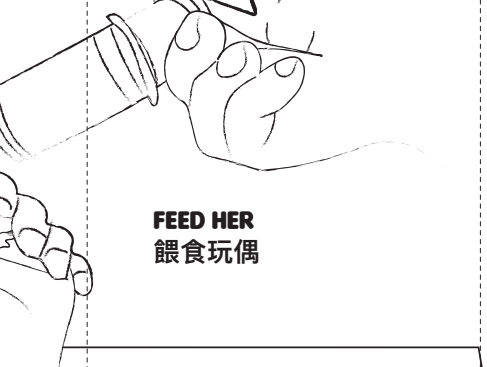
+ H<sub>2</sub>O



3

PULL SLOWLY TO FILL

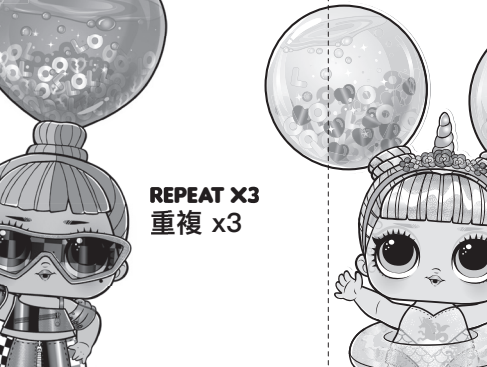
慢慢拉動以填充



4

FEED HER

餵食玩偶



5

REPEAT X3

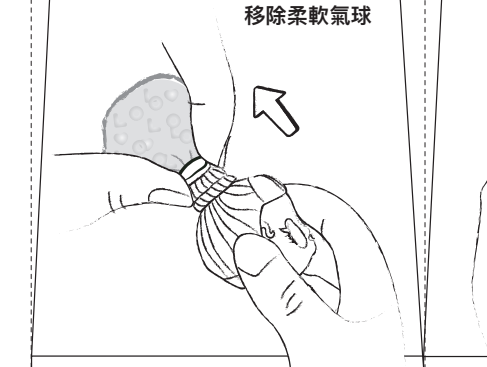
重複 x3



OR 或

REPEAT X6

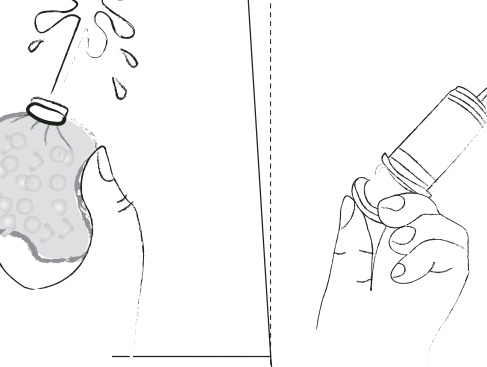
重複 x6



1

REMOVE SQUISHY BALLOON

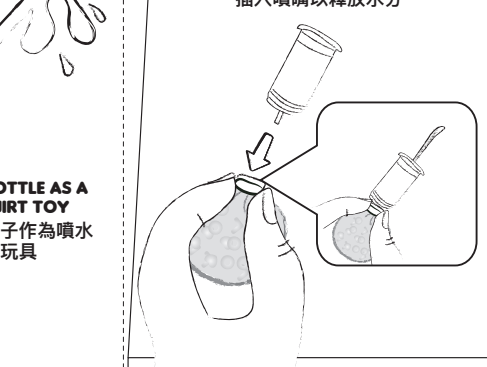
移除柔軟氣球



2

USE BOTTLE AS A SQUIRT TOY

使用瓶子作為噴水玩具



3

PRO TIP:

INSERT NOZZLE TO RELEASE WATER

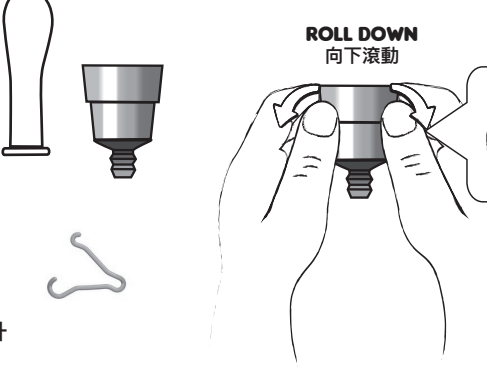
專業小貼士：  
插入噴嘴以釋放水分



1

ROLL DOWN

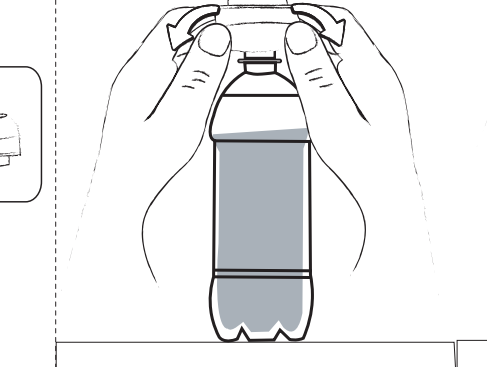
向下滾動



2

FOLD DOWN

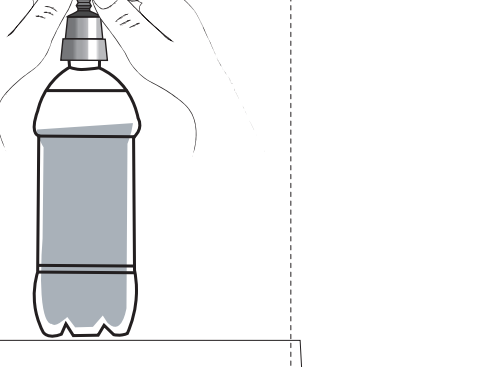
向下摺疊



3

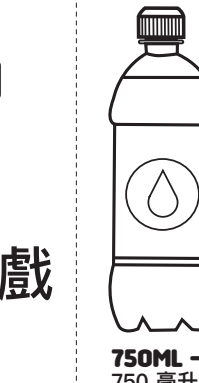
ATTACH CLASSIC BALLOON

裝上經典氣球



# CLASSIC BALLOON PLAY (BOTTLE)

## 經典氣球遊戲 (水瓶)



750ML - 1L  
750 毫升 - 1 升