

T-PULL
DOOR CLOSER

Directions

The T-Pull Door Closer is ready to install. Peel and stick the 3M adhesive on a clean surface.

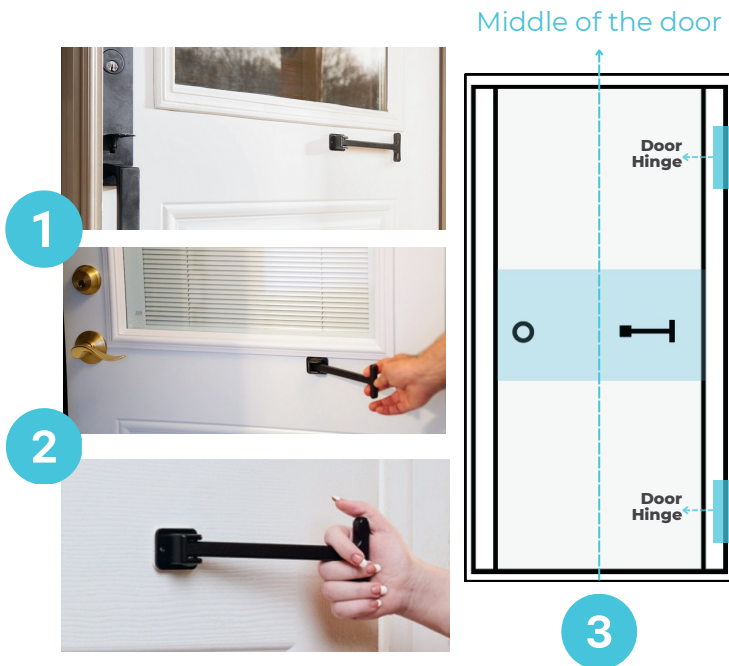
- Determine the grabbing height and distance (sitting or standing)
- Ensure the surface is clean, dry, flat, and smooth
- Ensure the T-Pull swivel path doesn't interfere with door operation
- Peel off the 3M backing to expose the adhesive
- Press and hold the adhesive surface onto the door for 60 seconds
 - Adhesive bond gets stronger over 72 hours
 - Optimal application temperature is between 50°F to 100°F (10°C to 37°C)
 - Adhesive operating temperature, load-dependent, is between -40°F to 194°F (-40°C to 90°C)

The adhesive is NOT permanent. Although the adhesive is strong and will support a strong horizontal pull, the lifespan of the adhesive depends on its environment.

Screws are included for a permanent installation and are meant to be used with the adhesive.

Where to position the T-Pull Door Closer

If unsure, it is recommended to ask a healthcare professional.



Guidelines for positioning the T-Pull :

- 1 Ensure the T-Pull grabbing end is pointing away from the door knob.
- 2 Ensure the T-Pull is placed where you can reach it when closing the door.
- 3 Ensure the T-Pull doesn't interfere with the door's hinges when the door closes.
 - Installing vertically (up/down) while pulling horizontally can weaken the adhesive and handle over time.
 - The optimal location of the T-Pull depends on the user, which may be above or below the original doorknob.



- The T-Pull should never be used as a support handle for transfer or stability.
- To avoid injury, the T-Pull handle should be retracted when not in use.
- Glass or fire doors have not been tested with the T-Pull.
- The digital version of this document can be found at: www.t-pull.com



If you have questions or concerns about your T-Pull, please email: hello@t-pull.com