

Pikler Triangle Tutorial



Large

Greetings from Wiwiurka workshop. Thank you for purchasing a handmade toy.



Assembly time: 35 minutes.
Difficulty level: basic

Each triangle is assembled before packing to confirm that everything works fine. This tutorial will guide you through your Pikler triangle assembly. Before starting please make sure you have received all the pieces.

Parts

L: Large
M: Medium
S: Small



X2



X2 (D)



X16 L / X14 M / X12 S



X1



X1 Serves as locking mechanism for the triangle once unfolded.



X2



X6



X36 L / X32 M / X26 S



X28 L / X24 M / X20 S



For the assembly you will need:

- Electric screwdriver or Phillips cross screwdriver #2
- 5/32" Allen key.
- Common glue or wood glue and a small paintbrush to glue the wooden caps covering the screws.

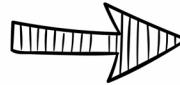


Relevant information:

You will notice that one rod is longer than the rest. This piece has an arrow to align the correct spot for the screws, it is the first rung at the top of the edge-rounded side pieces.(D)
The side pieces of the triangle have a number and a marking to show where they should go.



Start screwing, from the top, the rods on one side of the triangle.
Then screw the other side.



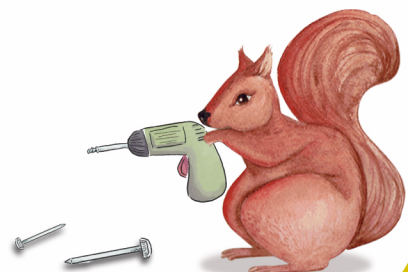
Verify that all rods on both sides are aligned. If you have a lightly twisted rod unscrew it, rotate it and screw again until it is fully aligned.



WIWIURKA



Once both sides of the triangle are screwed,
place the pieces as shown in the picture disposing the shape of an A.



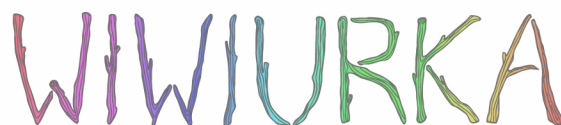
Place the triangular piece as shown in the picture, each piece has a marking on the internal sidewall to identify the correct side.



Place the assembly screws, the long screw should be placed in the internal part of the triangle as shown in the picture.



Next place the triangular piece and screw it with the allen key.



Once both triangular pieces are screwed, place the locking knob.

The locking knob is an additional protection to avoid the triangle from folding while the children are playing.

To put it just turn the screw all the way to the end.

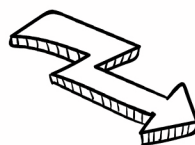


Once assembled, we recommend you to press the triangle down to verify that all sides fit correctly and the legs are grounded.



At last, with some glue and a brush, put the wooden caps.

Taaaaan!!!



You did it!!!

And now, have a cup of coffee or of your favorite tea and relax while your children enjoy climbing.



Usage and Maintenance Tips:

- The Pikler triangle has no sealer or wax, if you want to have it outdoors apply an outdoor wood sealer and keep it in a dry place. For indoor use apply a non-toxic acrylic sealer.
- Following Dr. Emmi Pikler's principles to allow babies and children to explore their environment, we suggest that you watch and remain close to your child while the equipment is in use, but keep your offers for assistance to a minimum. If we trust our child and give him/her time, he/she will learn to climb up and down with no extra help.
- Do not leave your child unattended while using the furniture.



Questions and suggestions:

hola@jugueteswiwiurka.com