



Fold here



0% Financing Available

2020 | casafurnitureusa.com
All rights reserved | 407.567.0020

casa
MODERN FURNITURE

Scan me with
your camera



SORRENTO

COFFEE TABLE

DESCRIPTION

Serving as a coffee table all of the time and additional seating during the times when you need it, the Sorrento Coffee Table is a gorgeous, comfortable blend of modern asymmetry with handsome traditional details such as the rich, textured, dark wooden top with the beige cushioned stool to match it when pulled out.

- Convenient and comfortable stool and table set.
- Handsome traditional details wrapped up in a modern set.
- Built from high quality materials.

MATERIAL

Rustic Wood, Glass, Stainless Steel, Eco Leather

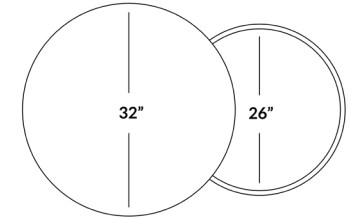
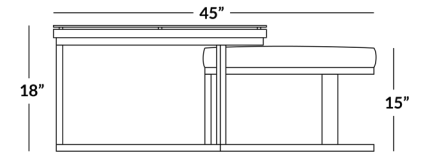
DIMENSIONS

Total Weight: 92lb



BOX DIMENSIONS

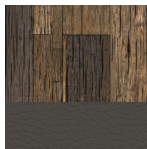
Box 1: 36 x 36 x 3 | 23 lb
Box 2: 35 x 21 x 34 | 69 lb



FULLY ASSEMBLED



AVAILABLE IN:



Rustic Wood|Glass

PRODUCT CARE

Rustic Wood

Clean rustic wood regularly with a dry, soft cloth. Dust with either a dry cloth, or a lightly moistened cloth

Important things to remember:

- Do not use ammonia-based products to clean rustic wood.
- Polish once every 3-6 months for best results
- Prevent discoloration from sunlight by occasionally closing the blinds and curtains of your windows.

Eco-leather

Clean and dust eco-leather with a soft, clean cloth. You may use mild soap and water, followed by a new cloth to dry for standard eco-leather care.

Important things to remember:

- Do not use harsh detergents to clean eco-leather.
- Avoid using drying products like alcohol, or concentrated detergents.
- Eco-leather, like traditional leather will naturally crease, wrinkle and stretch with regular use.
- Prevent sun damage and discoloration by making use of your window curtains or blinds.