



Fold here



0% Financing Available

2020 | [casafurnitureusa.com](http://casafurnitureusa.com)  
All rights reserved | 407.567.0020

**casa**  
MODERN FURNITURE

Scan me with  
your camera



ELVA  
BARSTOOL

## DESCRIPTION

Featuring modern, sophisticated design and unique C-shaped armrests, the Elva Barstool can turn your entertainment space into something that is your own. It features a high quality seat and back with a polished stainless-steel frame and set of arms that create a chic gap in the back. It rests on an adjustable stainless-steel base complete with a footrest for maximum comfort and style.

- Sleek modern barstool for any contemporary home.
- Gas-assisted height adjustment.
- Available in white, toupe, and dark gray.

## MATERIAL

Eco Leather, Stainless Steel, Foam

## DIMENSIONS

Total Weight: 57lb

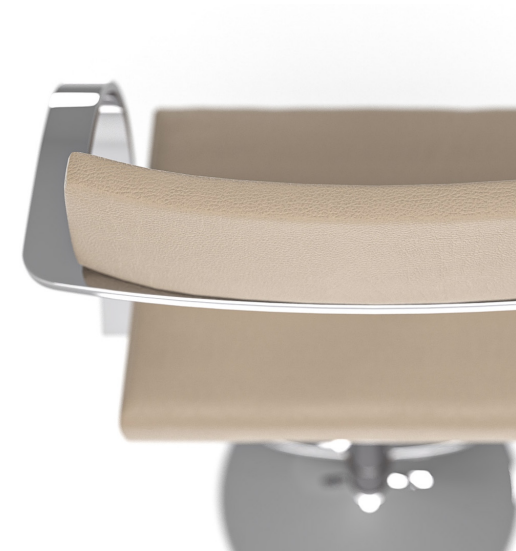
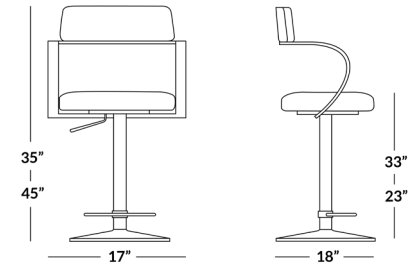


### BOX DIMENSIONS

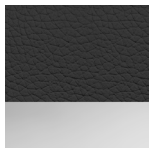
Box 1: 22 x 18 x 18 | 57 lb

### ASSEMBLY

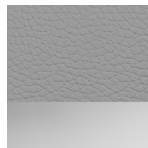
10 MIN



### AVAILABLE IN:



Dark Gray  
Leather|Stainless Steel



Light Gray  
Leather|Stainless Steel



Toupe  
Leather|Stainless Steel



White  
Leather|Stainless Steel

## PRODUCT CARE

### Eco-leather

Clean and dust eco-leather with a soft, clean cloth. You may use mild soap and water, followed by a new cloth to dry for standard eco-leather care.

Important things to remember:

- Do not use harsh detergents to clean eco-leather.
- Avoid using drying products like alcohol, or concentrated detergents.
- Eco-leather, like traditional leather will naturally crease, wrinkle and stretch with regular use.
- Prevent sun damage and discoloration by making use of your window curtains or blinds.

### Stainless Steel

To remove surface stains, use stainless steel cleaner or glass cleaner with no ammonia. Wipe the stainless-steel surface clean with a cloth dampened with the solution then use a clean cloth to dry the surface completely.

Important things to remember:

- Always use a soft, dry cloth to finish and dry stainless steel
- Clean stainless-steel at least once every 60 days.
- Keep the bases of chrome polish/finished products away from pets as their bodily fluids may cause damage.