

DESIGNER



Giovanni Sforza

At the age of 13, the Stylist Giovanni Sforza began working as a leather cutter, learning the first rudiments of the "art" of creating a sofa set. In 1990, Giovanni started his first business venture. In just a short time, he emerged as a leader in this field, recognized for the quality and efficiency of his production design.



Fold here



0% Financing Available

2020 | casafurnitureusa.com
All rights reserved | 407.567.0020

casa
MODERN FURNITURE

Scan me with
your camera



MIA
ACCENT CHAIR

DESCRIPTION

Bring your love of retro furnishings into the modern age with the Mia Accent Chair. The chair features a soft, yet squared design that provides a spacious and comfortable seating experience. The seat is confidently supported by four high-quality stainless-steel legs.

- Low set, premium design that is meant to last.
- Upholstered with comfort in mind.
- High-quality stainless-steel base

MATERIAL

Aquafabric, Stainless Steel, Foam, Solid Wood

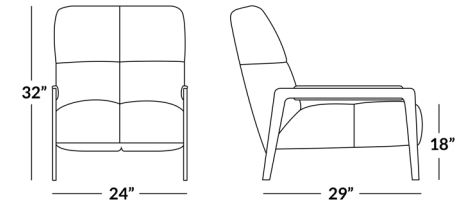
DIMENSIONS

Total Weight: 51lb



BOX DIMENSIONS

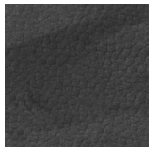
Box 1: 34 x 26 x 32 | 51 lb



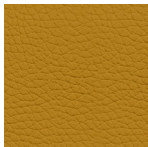
FULLY ASSEMBLED



AVAILABLE IN:



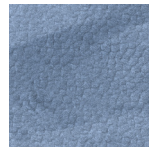
Dark Gray|Aqua Fabric



Mustard|Aqua Fabric



Terracotta|Aqua Fabric



Blue|Aqua Fabric

PRODUCT CARE

Aquafabric

Vacuum microfiber at least once every 60 days to remove hidden dirt and grime from between the fibers. In the event of a stain, apply mild soap and water with a microfabric cloth to the soiled area and rub stain until it is completely removed. Pat dry and brush area immediately after.

Important things to remember:

- Only use a light-colored sponge or cloth to remove stains. Darker colors may cause color transfer.
- Always brush and dry the area after using water with soap to remove stains. This prevents the microfibers from getting rough and helps maintain soft texture.

Stainless Steel

To remove surface stains, use Stainless Steel cleaner or glass cleaner with no ammonia. Wipe the stainless-steel surface clean with a cloth dampened with the solution then use a clean cloth to dry the surface completely. Important things to remember:

- Always use a soft, dry cloth to finish and dry Stainless Steel
- Clean stainless-steel at least once every 60 days.
- Keep the bases of chrome polish/finished products away from pets as their bodily fluids may cause damage.