



Fold here



0% Financing Available

2020 | [casafurnitureusa.com](http://casafurnitureusa.com)  
All rights reserved | 407.567.0020



Scan me with your camera



KIKO  
ACCENT CHAIR

## DESCRIPTION

The 100 percent genuine Italian leather and sophisticated design make the Kiko Accent Chair the perfect addition to the modern home. Its tall seat cushion ensures comfort while its relatively thin volume allows it to fit in even the tightest spaces. Supporting the chair is a set of contemporary, low-profile stainless-steel legs.

- Low-rise accent chair with wide, comfortable seat.
- Ultra-sleek genuine Italian leather.
- Rests on strong stainless-steel legs.

## MATERIAL

Composite Wood, Natural Veneer Wood, Foam, Metal, Italian Leather

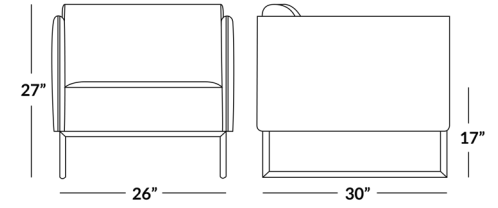
## DIMENSIONS

Total Weight: 50lb

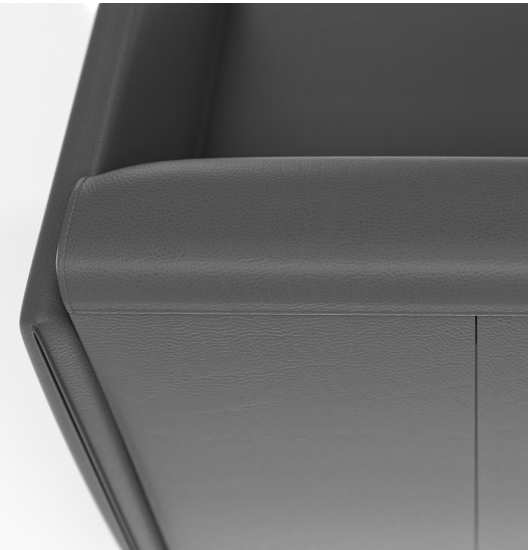
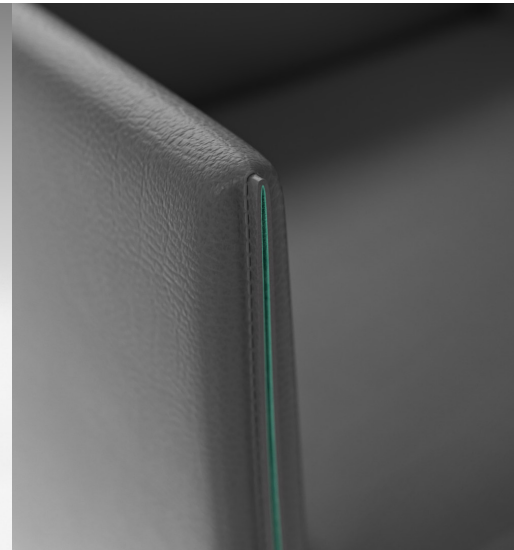


### BOX DIMENSIONS

Box 1: 26 x 30 x 26 | 50 lb



### FULLY ASSEMBLED



### AVAILABLE IN:



Dark Gray|Leather

## PRODUCT CARE

### Italian leather

Clean dirt or stains on genuine leather with a clean cloth that has been lightly dampened with leather cleaning solution. Follow with a dry, soft cloth for best results. In order to maintain and upkeep leather make sure every 60 days to apply leather protector. This process helps keep the moisture in the leather.

Important things to remember:

- Leather will crease, wrinkle, and stretch with regular use. This is normal for all leather products.
- Protect your leather by covering your windows with blinds and curtains as sunlight can cause discoloration.

### Stainless Steel

To remove surface stains, use Stainless Steel cleaner or glass cleaner with no ammonia. Wipe the stainless-steel surface clean with a cloth dampened with the solution then use a clean cloth to dry the surface completely. Important things to remember:

- Always use a soft, dry cloth to finish and dry Stainless Steel
- Clean stainless-steel at least once every 60 days.
- Keep the bases of chrome polish/finished products away from pets as their bodily fluids may cause damage.