



AGRICULTURAL MACHINERY

sitrex®

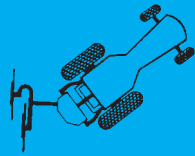


Mounted side-delivery rake

Mounted side-delivery rake

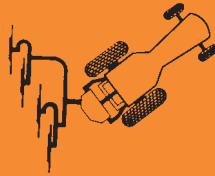


TECHNICAL DATA:
Working width-raking 79 in. (mt. 2,00)
Working width-spreading and turning
79 in. (mt. 2,00)
Weight 145 lbs (66 kg.)



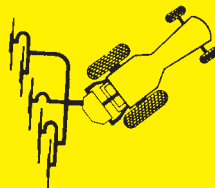
RP2

TECHNICAL DATA:
Working width-raking 103 in. (mt. 2,60)
Working width-spreading and turning
114 in. (mt. 2,90)
Weight 396 lbs (180 kg.)



RP4

TECHNICAL DATA:
Working width-raking 138 in. (mt. 3,50)
Working width-spreading and turning
154 in. (mt. 3,90)
Weight 440 lbs (200 kg.)



RP5

Wheel diameter 55 in. (mt. 1,4)

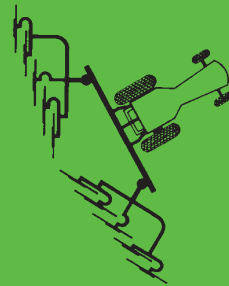
Teeth number each wheel 40

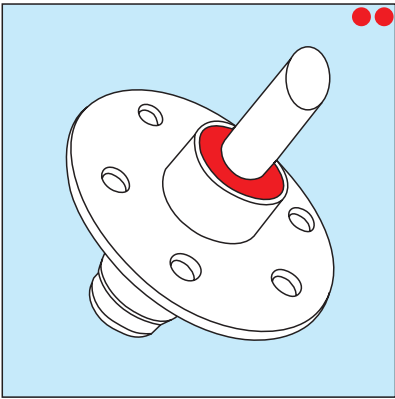
Teeth diameter 0,28 in. (mm. 7)

Rake with very sturdy equipment. Independent and interchangeable wheels mounted on roller bearings. Left and right SPREADING - TURNING and RAKING action, also suitable for limited place.

RP 8

TECHNICAL DATA:
Working width-raking 217 in. (mt. 5,50)
Working width-spreading and turning
240 in. (mt. 6,10)
Weight 1.013 lbs (460 kg.)



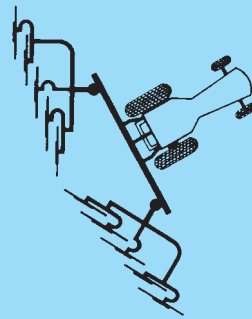


Hubs with sealed dust-covers on all our machinery

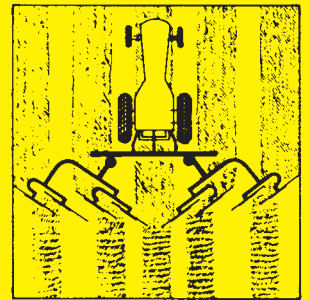
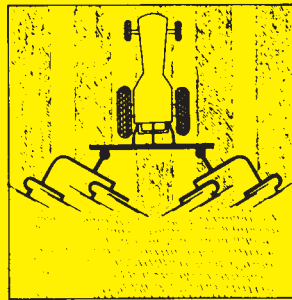
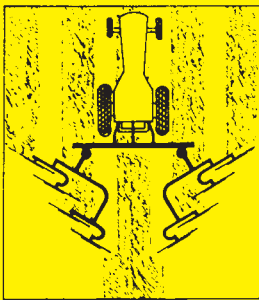


TECHNICAL DATA:
 Working width-raking mt. 7,50
 Working width-spreading and turning
 mt. 8,70
 Weight kg. 520

RP10



Performance valid for all hay rakers of our production.



Raking

Spreading

Turning

SITREX S.p.A. reserves the right to make changes or add improvements at any time without notice. The information contained herein is general in nature and is not intended for specific application purposes.



Zona Industriale - Viale Grecia, 8
 06018 TRESTINA (Perugia) - ITALY
 Phone ++39075 8540021 r.a. - Fax ++39075 8540523
 E-mail: sitrex@sitrex.it - http://www.sitrex.com