

## **TOWING MIRRORS**

FOR TOYOTA LANDCRUISER LC200 SERIES 2007-2021



## ABOUT US

Founded in 2018, the San Hima brand stands for passion and enthusiasm for exploring the spectacular nature of the great outdoors. Since its inception, the trusted solutions and proven designs that San Hima offers to the market have made adventure and travelling flexible and enjoyable!

Based in Australia, San Hima has under its umbrella a wide selection of outdoor solutions, including cargo systems, vehicle protection accessories and tow & trailer parts, that are designed to help you carry your gear wherever your passion takes you and boost your performance when conquering the peaks!

At San Hima, we have wild souls and we are committed to designing products that are tough enough to take on any adventures and at the same time, making them safe and easy to use. These values in our conviction are what drive us to make innovations. Since pursuit your passion shouldn't be complicated.

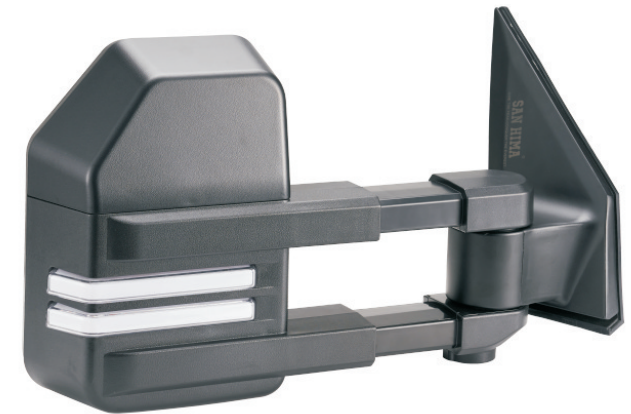
Live the Peak, Conquer the Everest, San Hima is your brand of choice!

## SAFETY INSTRUCTIONS

- These mirrors are designed ONLY for TOYOTA LANDCRUISER LC200 SERIES 2007-2021.
- DO NOT use the mirror for any purpose other than for which it is designed.
- ONLY have your mirrors extended when towing.
- Always check the condition of the mirror before every journey, if any part is damaged or missing, DO NOT use.
- Please use a glass cleaner to maintain the clarity of the mirror's glass. When cleaning the surface, make sure to use a microfiber cloth to avoid scratches.
- This towing mirror is Blind Spot Monitoring System compatible.

## CONTENTS

- 1 PC(s) Left Hand Side Mirror
- 1 PC(s) Right Hand Side Mirror
- 6 PC(s) Anti-loosening Hexagon Nuts
- 1 PC(s) User Manual



## TOOLS REQUIRED (NOT INCLUDED)

- Philips head screwdriver
- Longer flat screwdriver
- Smaller screw driver
- Small ratchet with 10mm socket
- Trim panel removal tools

## SPECIFICATION

SKU: SH-TMLC200-BLK  
Package Weight: 8.5kg  
Vehicle: TOYOTA LANDCRUISER  
LC200 SERIES 2007-2021  
Color: Black  
Flat Mirror Adjusting Type: Electric

Convex Mirror Adjusting Type: Manual  
Extension Type: Manual  
Folding Type: Manual  
Material: Automotive Grade  
ABS Housing

## INSTALLATION

**1**



Remove the interior door trims and mirrors as per the vehicle manufacturer's instructions.

**2**



Hold the mirror in line with the bolt hole, and you will need to use the three supplied nuts to secure the bolts. Place all pre-fixed studs through the door and start the top bolt off and secure about half way up the thread. Once finished, double check that the rubber surround on the door isn't stuck under the mirror base and the rubber seal sits flush against the mirror and door frame. Next, tighten the 3 bolts until they are securely tightened.

**3**



The mirrors are supplied with a plug and play loom that will directly plug into the original one you have just disconnected. Ensure this clicks firmly into place.

**4**



Reinstall the door trim according to manufacturer's instructions. Then adjust your mirrors to suit your viewing angle and preferences.



## WARRANTY

San Hima (“Manufacturer”) warrants, to the original purchaser (“User”) that its towing mirrors, if purchased from manufacturer or an authorized distributor or dealer, will be free of defects in material and/or workmanship under normal usage from the date sold and for the duration (the “Warranty Period”) of 3 YEARS.

This warranty shall ONLY be effective for the original purchaser and apply ONLY to the San Hima towing mirrors that are correctly installed on the vehicle for which they were intended.

San Hima will either replace the product or provide you with a refund at our discretion provided that the fault is found to have been caused by a design or manufacturing defect that results in its failure to perform correctly as described. The limited warranty is the only one that applies to this product, and it sets forth all the responsibilities of San Hima.

### EXCLUSIONS:

This warranty does not cover defects, failure or damage caused by incorrect or faulty fitment, intentional damage, misuse or abuse. It is recommended that the installation should be performed by suitably qualified technicians or the warranty will be voided. For further clarity, this warranty is also void if the towing mirrors:

- are operated outside of its technical specifications,
- are repaired, altered or modified carried out by anyone other than San Hima, or without San Hima’s authorization,
- are damaged by adverse weather, extreme temperature, accidents, negligence, daily wear and tear, alteration, incorrect installation, improper use such as having your mirrors extended when not towing, or failure to check the condition of your mirrors before every journey.

### CLAIMS:

If a San Hima product is suspected of being defective, you'll need to provide proof of purchase (e.g. a screenshot of the order) and a picture and a video of the damaged goods in their entirety to [sales@sanhima.com](mailto:sales@sanhima.com). If the product is found to be defective and covered by this limited warranty, the remedy is replacement or refund, at San Hima's option. No charges will be accepted for external labour or materials.