

# **CAR ROOF WATER TANK 8Gal (30L) USER MANUAL**

SKU: SH-TK-30L

V1.0



## ABOUT US

Founded in 2018, the San Hima brand stands for passion and enthusiasm for exploring the spectacular nature of the great outdoors. Since its inception, the trusted solutions and proven designs that San Hima offers to the market have made adventure and travelling flexible and enjoyable!

Based in Australia, San Hima has under its umbrella a wide selection of outdoor solutions, including cargo systems, vehicle protection accessories and tow & trailer parts, that are designed to help you carry your gear wherever your passion takes you and boost your performance when conquering the peaks!

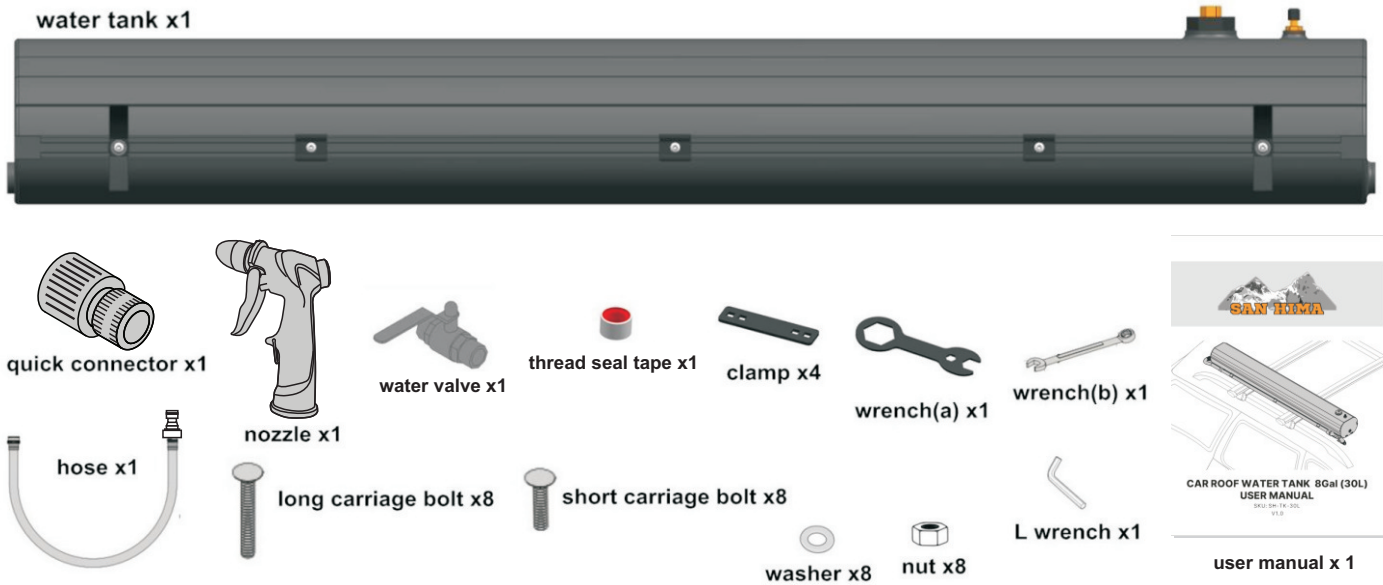
At San Hima, we have wild souls and we are committed to designing products that are tough enough to take on any adventures and at the same time, making them safe and easy to use. These values in our conviction are what drive us to make innovations. Since pursuit your passion shouldn't be complicated.

Live the Peak, Conquer the Everest, San Hima is your brand of choice!

## WARNINGS & INSTRUCTIONS

- Do not drink from the water tank.
- Never leave water in the water tank during freezing temperatures as it could damage your unit. Never put RV antifreeze in the unit!
- Do not use an automated car wash with the water tank installed. You must remove the water tank from your vehicle prior to entering an automated car wash to avoid damaging your vehicle and water tank.
- Check and tighten the mounting hardware periodically. In addition, always stop and check and tighten mounting hardware while driving on rough roads. Failure to do so could result in the water tank coming off your vehicle during a quick stop, a sharp turn, or an auto accident. This could result in damage to the water tank, your vehicle, other vehicles, injury, or death. We shall not be liable for any damage or injury caused by the water tank coming off the vehicle.
- If your vehicle is parked on a hill, it should be parked with the outlet on the downhill end, in order to use all the water.

# CONTENTS



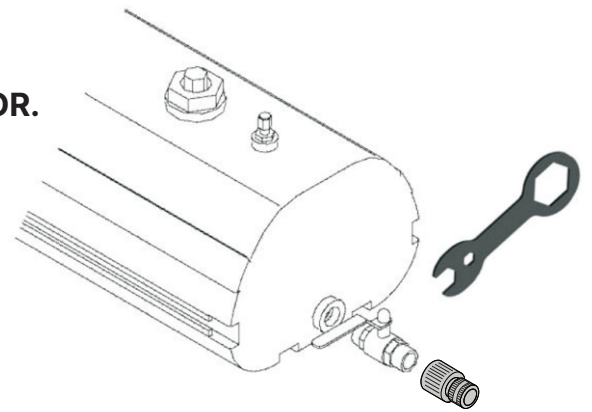
# SPECIFICATIONS

Net Weight (Accessories Included)	12kg(26.46lbs)
Fully Loaded Weight (Accessories Included):	42kg (92.59lbs)
Dimensions	130 x 22 x 16cm(51.18 x 8.66 x 6.30in)
Case Material	Aluminum
Surface Finish	Powder Coating
Mounting Hardware Material	Stainless Steel
Capacity:	30L (8 gal)
Set Pressure:	55~65PSI
Crossbar Spread	<120cm(47.24in)
Roof Rack Load Limit	74.84kg+ (165lbs+)

# ASSEMBLY

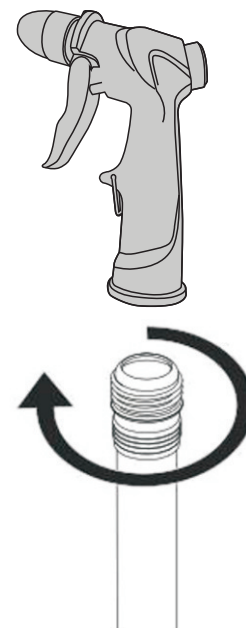
## 1. INSTALL THE WATER VALVE & QUICK CONNECTOR.

Install the water valve to the tank and firmly tighten it by using a wrench. Then install the female quick connector. Do not overtighten. Check for leaks once the tank is filled and retighten if necessary.



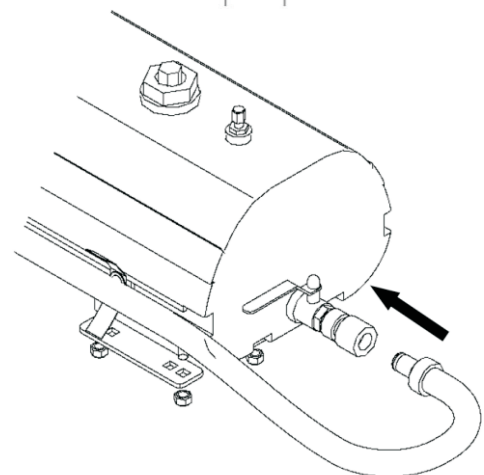
## 2. INSTALL THE NOZZLE.

Install the nozzle to the other end of the hose and firmly tighten (hand tightens only).



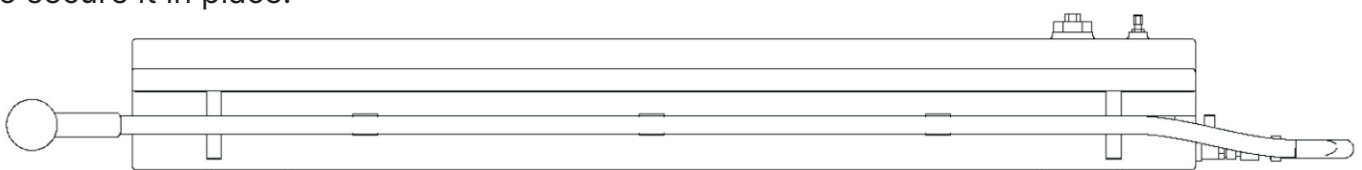
## 3. ATTACH THE HOSE TO THE WATER VALVE.

Press the male quick connector on the hose into the female on the water valve.



## 4. STOW THE HOSE.

Snap the hose into the clips and use the straps to secure it in place.

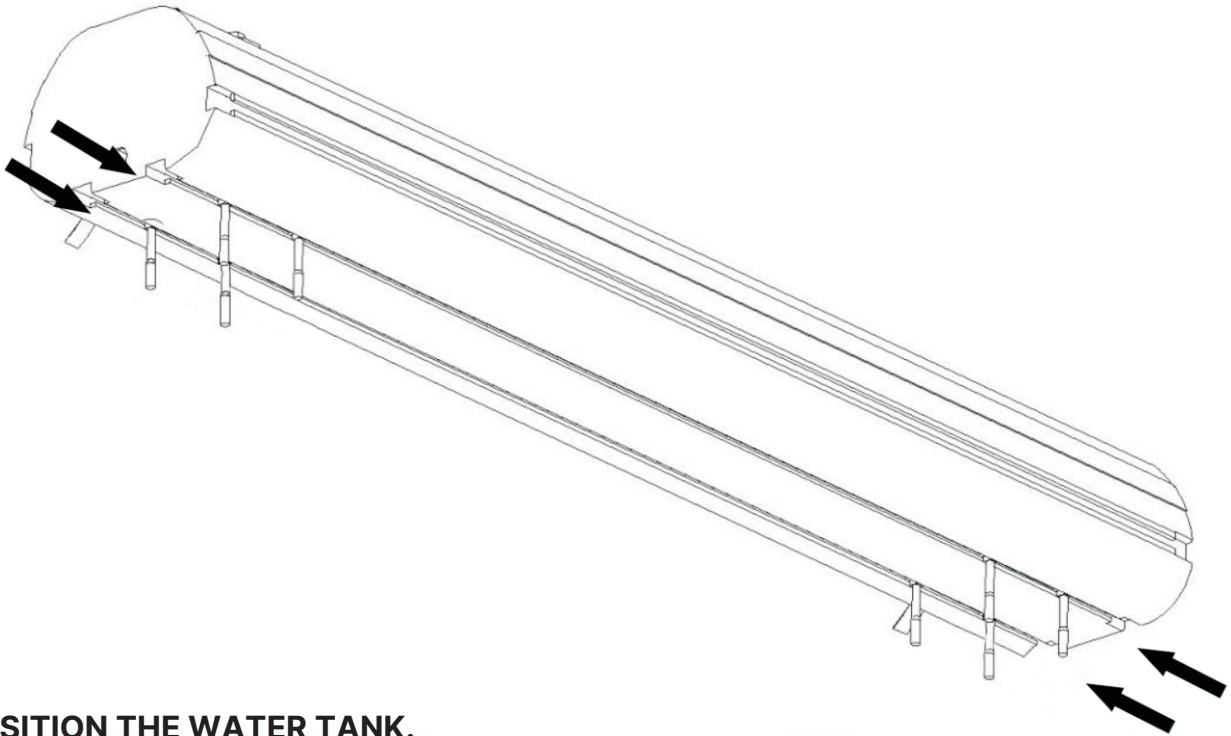


Always test the water on your hand to avoid being scalded.

# INSTALLATION

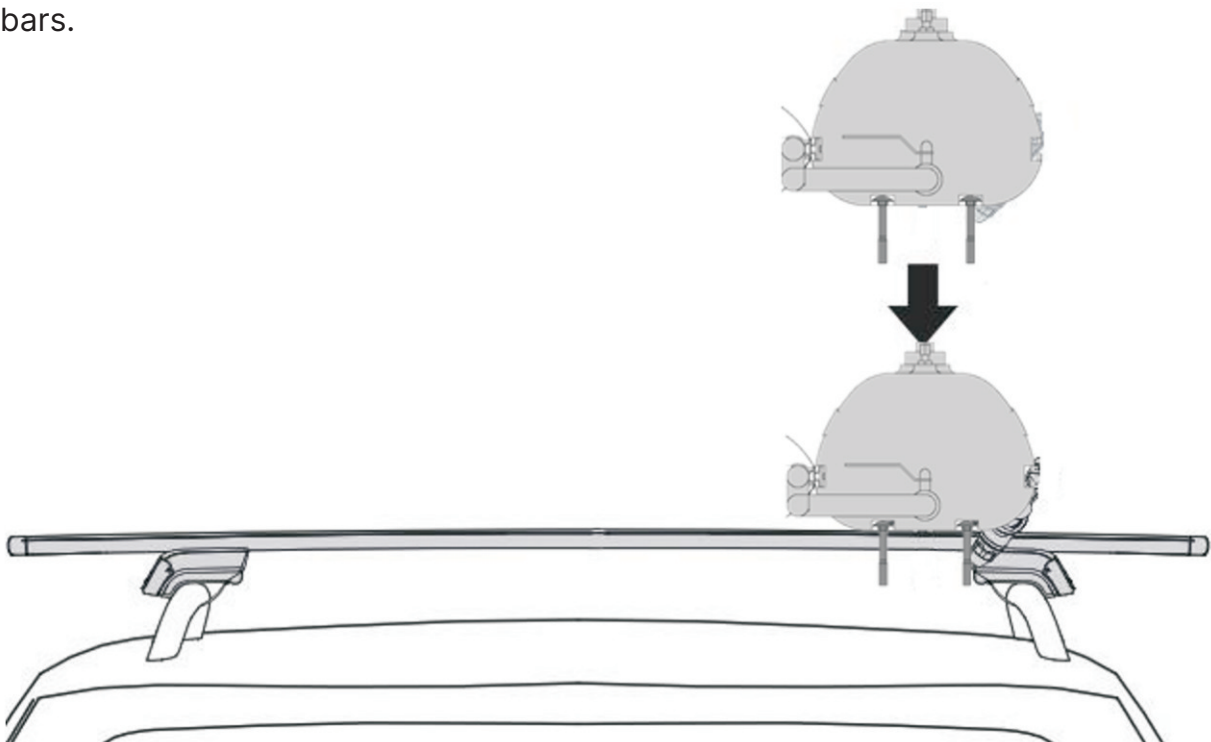
## 1. BOTTOM SLOT INSTALLATION ON CROSSBARS.

Determine which carriage bolts you will need based on the thickness of your crossbars. For thinner crossbars use the shorter bolts. For thicker crossbars use the longer bolts. Insert 8 carriage bolts into the 2 slots on the bottom of water tank as shown below.



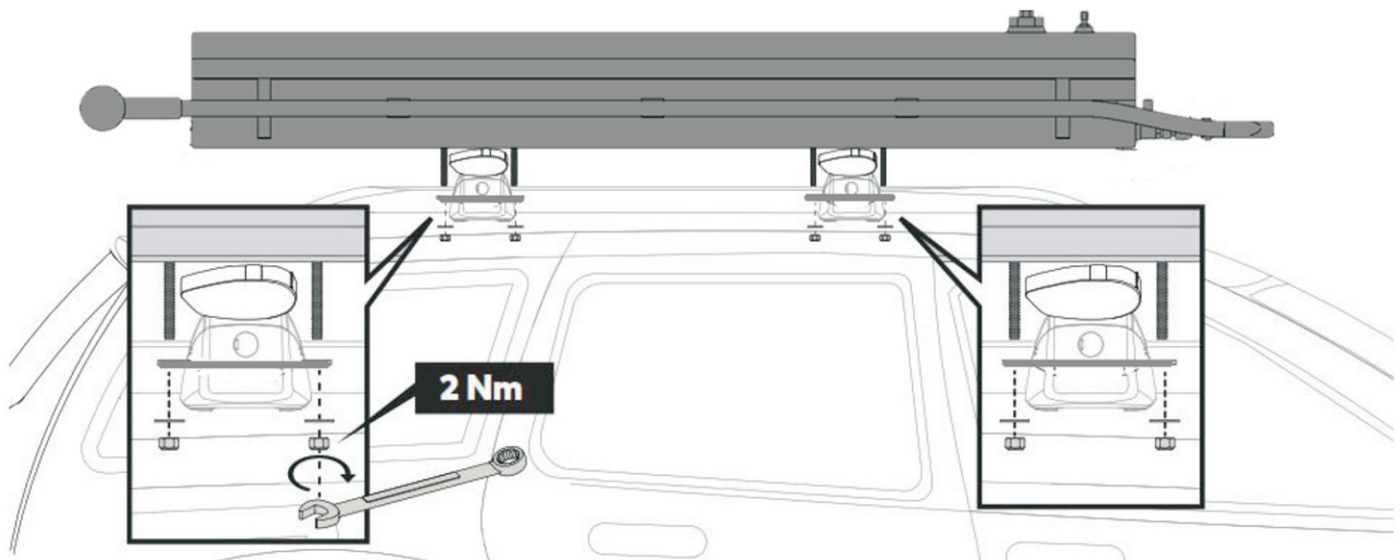
## 2. POSITION THE WATER TANK.

Set the water tank onto your crossbars inboard of the towers with the bolts straddling your crossbars.



### 3. INSTALL THE CLAMPS.

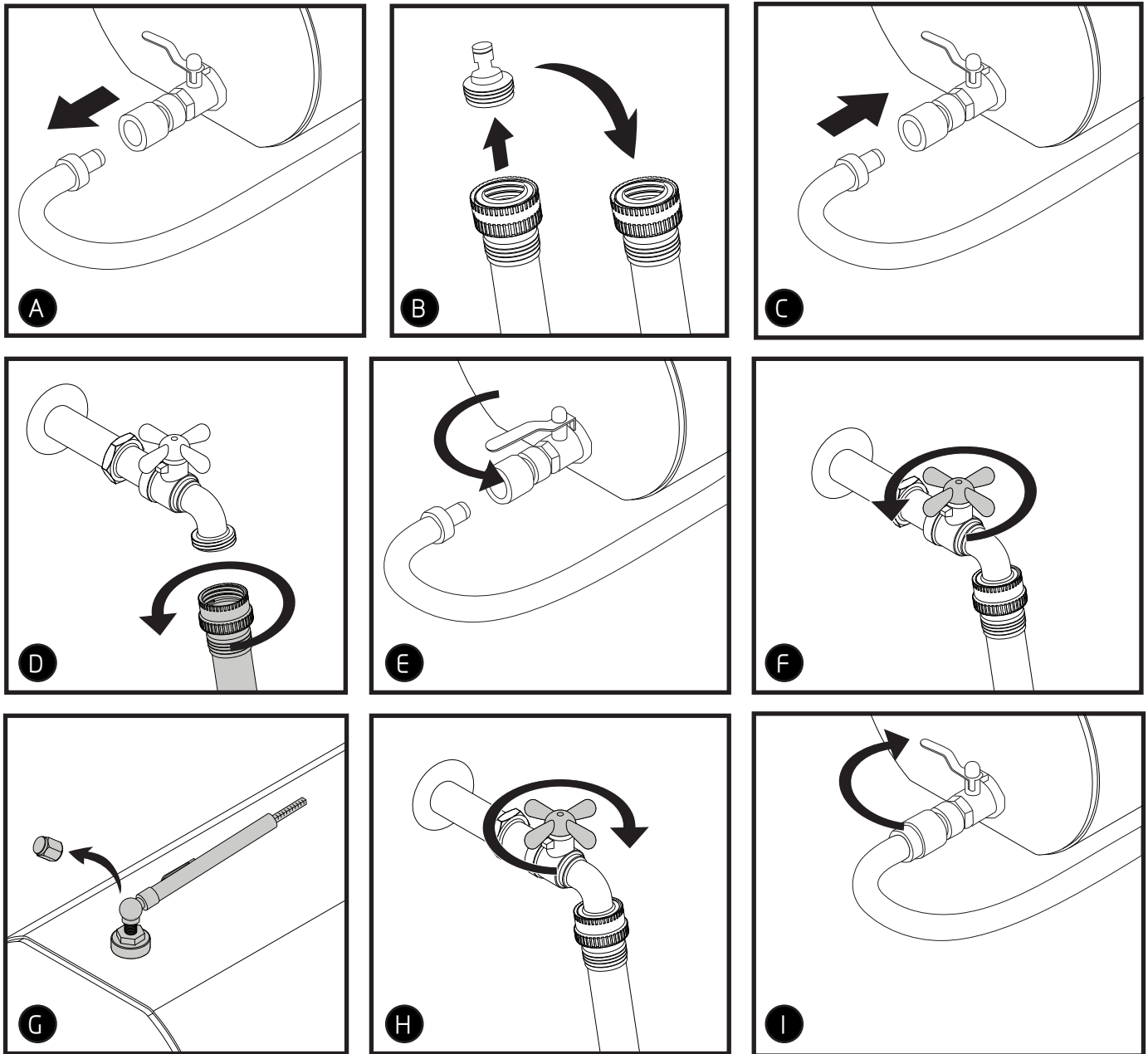
Assemble the clamps around the crossbar as shown and use a wrench to install the washers and nuts. Tighten completely to 2 Nm. Push and pull at the water tank to verify the installation.



## FILLING AND PRESSURIZING THE TANK

### 1. FILLING AND PRESSURIZING THE TANK WITH A GARDEN HOSE (NOT INCLUDED).

- A. Detach the sprayer hose from the tank.
- B. Detach the male quick connector from the spray hose and attach it onto your garden hose (not included).
- C. Attach the garden hose to the tank using the quick connector.
- D. Attach the other end of the garden hose to a water supply.
- E. Open the valve on the tank.
- F. Open the valve on the water supply to begin filling. It will take a few minutes to fill the tank.
- G. Remove the air valve cap and use a tire pressure gauge (NOT INCLUDED) to check the pressure at the air valve.
- H. When the pressure reaches 55-65 PSI turn off the water supply and replace the air valve cap.
- I. Fully close the tank valve, remove the garden hose, and reconnect the sprayer hose.



**NOTE:** Clean the tank in the following steps before using it for the first time.

1. Drain the tank completely.
2. Measure 1 teaspoon/gallon of household bleach into the tank and add fresh water until it's full.
3. Let it sit for 24 hours to sterilize, then drain the water.
4. Fill with fresh water and drain repeatedly until all the bleach odor is gone.

## 2. FILLING THE TANK AND PRESSURIZING WITH A PUMP.

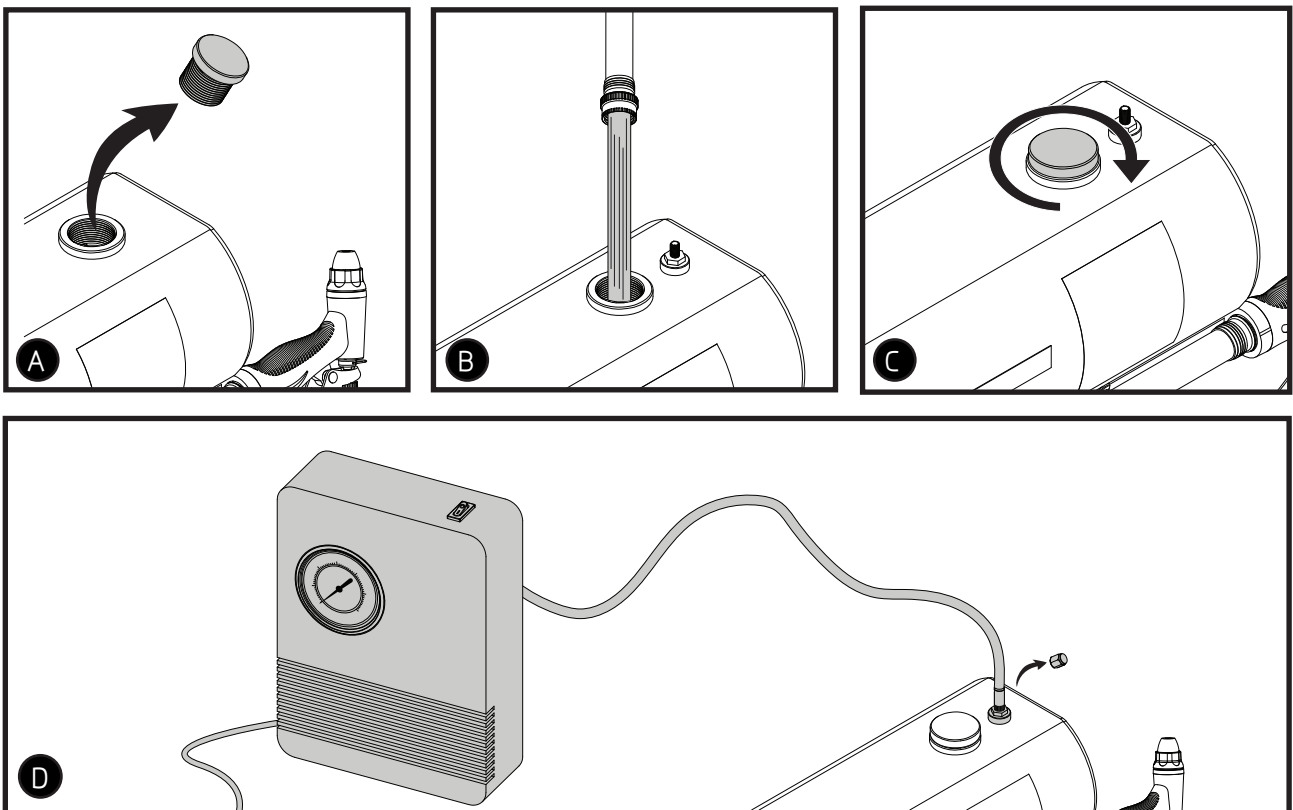
A. Remove the fill cap from the tank.

B. Fill the tank with clean water.

C. Replace the fill cap.

D. Remove the air valve cap and connect a pump to the air valve. You may use a 12-volt tire compressor or another suitable pump. Pressurize the tank to 55-65 PSI then replace the air valve cap.

**⚠ WARNING:** This product releases pressure at a target of 55-65 PSI. If the pressure relief valve on the fill cap is damaged or altered, the water tank could explode and cause injury or death. Check the pressure while pumping air and never pressurize greater than 65 PSI. If the pressure is not released before it reaches 75 PSI, the fill cap should be replaced.



## 3. HEATING THE WATER.

The water tank will heat water on a warm and sunny day. The sun heats the black surface of the tank and the aluminum transfers the heat to the water. The water heats up as long as the tank is receiving sunlight. The water temperature will rise approximately 10-15 degrees per hour depending on the conditions of your environment. If your water temperature starts at 60 degrees, for example, it might be 90 degrees+ in about 2-3 hours. In general, the water will be about 20-30 degrees warmer than the ambient temperature on a sunny day.

**⚠ WARNING:** Test the water on your hand for about 10 seconds. Remove your hand before the water gets hot enough to scald you. Keep in mind that the water in a tank is likely hotter than the water in the hose. If the water is too hot, you can add some cool water via the fill cap (release pressure first) or wait until it cools off naturally.

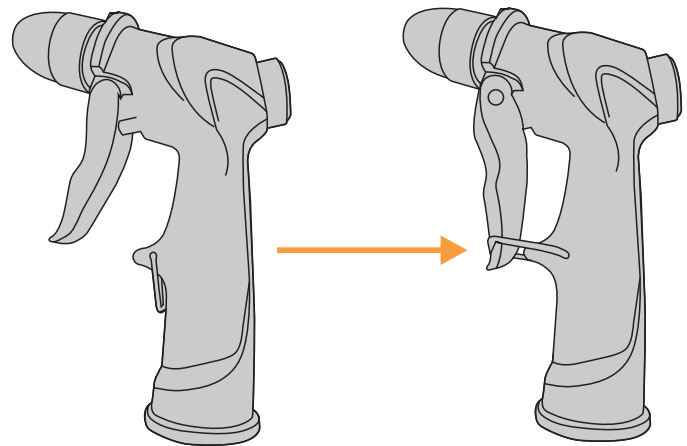


## SPRAY NOZZLE

- The spray nozzle can be adjusted to a variety of spray patterns. Just rotate the tip of the nozzle to adjust the shower spray to the jet set. If the tip is completely tight, no water will come out. You can also remove the nozzle and run water from the hose.



- You can use the clip as the picture shows so you don't have to keep your hand holding it the whole time.



- Be sure to attach the nozzle prior to travel.

## MAINTENANCE

- When storing, empty the tank completely. Store with the valve open, the hose, and fill cap off so it dries out.
- Tighten all screws, mounting hardware, and fittings on a regular basis.
- Periodically check inside of nozzle for hard water deposits and clean accordingly.

## TROUBLESHOOTING

- If you have a leaking air valve, use a valve core tightening tool to tighten the valve.
- If you have leaks around the water valve, uninstall the valve, apply thread seal tape, then reinstall the valve.



## WARRANTY

San Hima warrants that each water tank that is purchased while this Warranty is in effect will be free from defects in materials and workmanship for a period of 1 year from the date of receiving the product from San Hima or its authorized distributor/dealer. If it is believable to be defective during the 1-Year Warranty Period, San Hima will, at its option, replace it with the same or similar product, or issue a refund for the defective San Hima product. And San Hima will pay for the cost of shipping or transportation of a defective component. This warranty terminates if a purchaser transfers the product to any other person. And please retain your purchase receipt for Your records.

Please ensure that the San Hima water tank should be fit in accordance with warnings and instructions listed in the user manual, and should be used for the purpose for which it was designed.

Any and all warranty coverage does not cover: normal wear and tear (including, but not limited to, scratches, dents, tears, or aesthetic oxidation of surfaces, or natural breakdown of colors and materials over extended time and use), commercial use, accidents, unlawful vehicle operation, or modifications or repairs not performed or authorized by San Hima. In addition, this warranty does not cover problems resulting from conditions beyond San Hima's control including, but not limited to, theft, misuse, overloading, or failure to assemble, mount or use the product in accordance with San Hima's written warnings and instructions included with the product or made available to the original purchaser.

If further information or investigation is required or if the claim does not meet the requirements under our warranty, San Hima'll let you know.