

INSTALLATION OF 'OUTBACK' ROOF CONSOLE

TF ISUZU DMAX DUAL CAB and EXTRA CAB 09/2012on

Code: RCDMAX12

WARNING: We recommended an Auto Electrician connects console wiring in this installation as failure to connect wiring correctly, and tape up all connections as described in following instructions, may result in an electrical short and void console warranty.

For this installation you will need a **long** Phillips screwdriver, **short** Phillips screwdriver, electric or battery drill, 'stubby' 3.0mm drill bit, steel ruler or Tape measure, sharp craft knife and electrical tape.

VEHICLE PREPARATION:

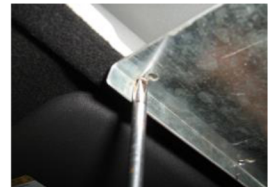
Remove front light pod (if fitted) from roof of vehicle; to do this, carefully pull down on rear corner of light pod to unclip from roof, then pull down on other rear corner. Remove pod from cavity and unplug light pod from wiring harness. Store Pod aside for refit to vehicle at a later date if required. Tape up light connector harness and tuck into roof cavity.

Front Mounting Bracket installation: (Light pod removed)

Hold front mount bracket over cavity opening with rear of bracket 90mm forward of cavity opening (measure 90mm in centre of opening) and equal covering of cavity from side to side. Mark the four (4) outer holes (200mm centres) onto roof lining, and Drill 3.0mm holes through lining into light pod frame above lining. Screw mount bracket onto lining into light pod frame with four (4) 8# x 20 self-tappers.



(base model vehicle) Unclip sun visors and swing around to doors. Unscrew Visor clips and using clip screws, fix cutting template to roof lining and cut around centre of template with sharp craft knife, reverse template and cut again around centre of template to create a hole 150mm x 70mm. Fix front mount plate to two (2) holes in roof cavity with 14#x 20mm self-tappers. With 20mm of drill bit exposed from drill chuck, drill 3.0mm hole into lower R/H hole and fasten with remaining 14# x 20 self-tapper screw.



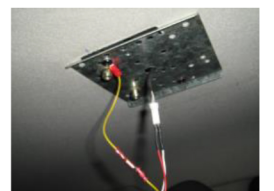
Rear Fixing Bracket installation:

Prise off lens cover from centre interior light, remove 2 screws holding light To roof, disconnect wiring harness and remove light from vehicle. Set aside for re-fit to vehicle at later date if required. Poke wiring harness through hole in mount plate and fix rear mount plate with 10# x 20mm self-tappers to interior light holes with captive nuts facing forwards and downwards. **Attach yellow earth wire to one of these screws.**



INSTALLATION PREPARATION:

Connect console wiring extension supplied to console wiring loom; connect **red to red**, **white to white** and **yellow to yellow**. Tape up all connections.



Comfortable work position: Slide seats all way back; if right handed, sit in passenger seat; if left handed, sit in driver seat.

Console and rear interior light wiring: Stand console upright on front seat and plug console wiring into rear lighting harness. **Plug red wire into white/black, white wire into red, and yellow wire into yellow earthed to screw.** Tape up all wires to connector block.

Close doors and test lights. There is an on/off switch located behind front lights, when switch is **off** it acts as a kill switch; no lights will work. When switch is **on** lights will work independently as map/interior lights when doors are shut and timer switches off. When doors are opened- lights will work as door/interior lights.

CONSOLE INSTALLATION:

Use 'Blu-Tack' in fit kit to adhere one of the 6mm x 30mm round head bolts to **long** Phillips screwdriver, put a small amount of 'Loc-Tite' on thread and store in convenient location, eg: in/on centre console.

Hold console up in position **over Front Mounting Bracket** ensuring bracket fits between inside front of console and radio surround/storage tray. Look up under rear mounting hole and line up captive nuts in Rear Fixing Bracket with slotted holes in console body, tuck wiring loom out of way so as not to jam between console body and bracket. **Loosely** fasten console up to one of the captive nuts in Rear Fixing Plate using the 6mm x 25mm bolt 'Blu-Tacked' to screwdriver.

Push up hard on front of console and **finger fasten** front of console to Front Mounting Bracket using the two 6mm x 16mm **black** Phillips head bolts supplied. Then do bolts up tight using **short** Phillips screwdriver.

'Blu-Tack' other 6mm x 30mm round Phillips head bolt onto screw driver, apply 'Loc-Tite' and fasten into Rear Fixing Bracket; tighten both bolts. **NOTE:** *Only tighten rear bolts up firm so console is held to roof. **DO NOT** tighten so as to bend rear mounting plate downwards; do rear bolts up with equal tension.*

Open Locker Box and remove Microphone Cable Holder and Rear Mounting Hole Cover from inside; fasten Hole Cover in place using screws supplied. Fasten Microphone Cable Holder in place as per radio installation instructions.

Fit Kit: RCDMAX12

- One (1) Front Mounting Bracket (light pod removed)
- One (1) Front Mounting bracket (base model vehicle)
- One (1) cutting template
- One (1) Rear Fixing Bracket
- One (1) Console wiring adaptor
- One (1) Yellow Earth Wire
- Two (2) 10#x20mm self-tapping screws
- Four (4) 8# x 20mm self- tapping screws
- Three (3) 14# x 20mm self-tapping screws
- Two (2) 6mm x 16mm **black** Phillips round head bolts
- Two (2) 6mm x 30mm Phillips round head bolts
- One (1) Small piece of 'Blu Tack'
- Three (3) x 100mm Sticky back foam piece

RADIO INSTALLATION

Radio Insert Installation: for smaller size radios

PLEASE NOTE: Radio Inserts NOT INCLUDED.

Decorative side of insert faces outwards and snaps out over bottom of tray surround.

To install insert, squeeze top and bottom together; push/bend sides and squeeze into tray surround from inside to outside until bottom lip on decorative side of insert snaps/pops out over bottom of tray surround, prize with fingers to ensure bottom lip of insert is in place over tray surround as described. **Do not** scratch or mark insert or surround by prising/levering with tools; use hands/fingers only.



Radio Installation:

Place protective cover on work bench to avoid scratching console. Place console on protective cover and using a sharp knife cut a 30mm x 100mm section out of storage tray 25mm in from where rear of radio will be when installed. Use a small amount of methylated spirits on a clean cloth to clean exposed part of console and bottom rear of radio.



Peel one side of protective backing from foam strip supplied; apply pressure with palm of hand to adhere foam to exposed part of console. Peel backing off other side of foam strip and add one or more strips of foam to suit different size radios (see chart below). This will keep radio level with bottom of surround.



Insert radio on an angle until radio protrudes 15mm out over bottom of tray surround or insert and straighten; lay flat onto sticky back foam and apply firm pressure to top of radio with palm of hand for 30 seconds to ensure good adhesion.



Sticky back foam chart:

- One (1) strip- standard size radios
- Two (2) strips- Icom and Uniden
- Three (3) strips- GME Electrophone

Microphone and Microphone Cable Holder installation:

Install in a position that suits best, depending on vehicle and Radio model. Ensure microphone or microphone cable and holder does not foul on sun visor when pulled down.



Microphone clip on slight angle



Left hand cable outlet radios



Microphone clip on acute angle