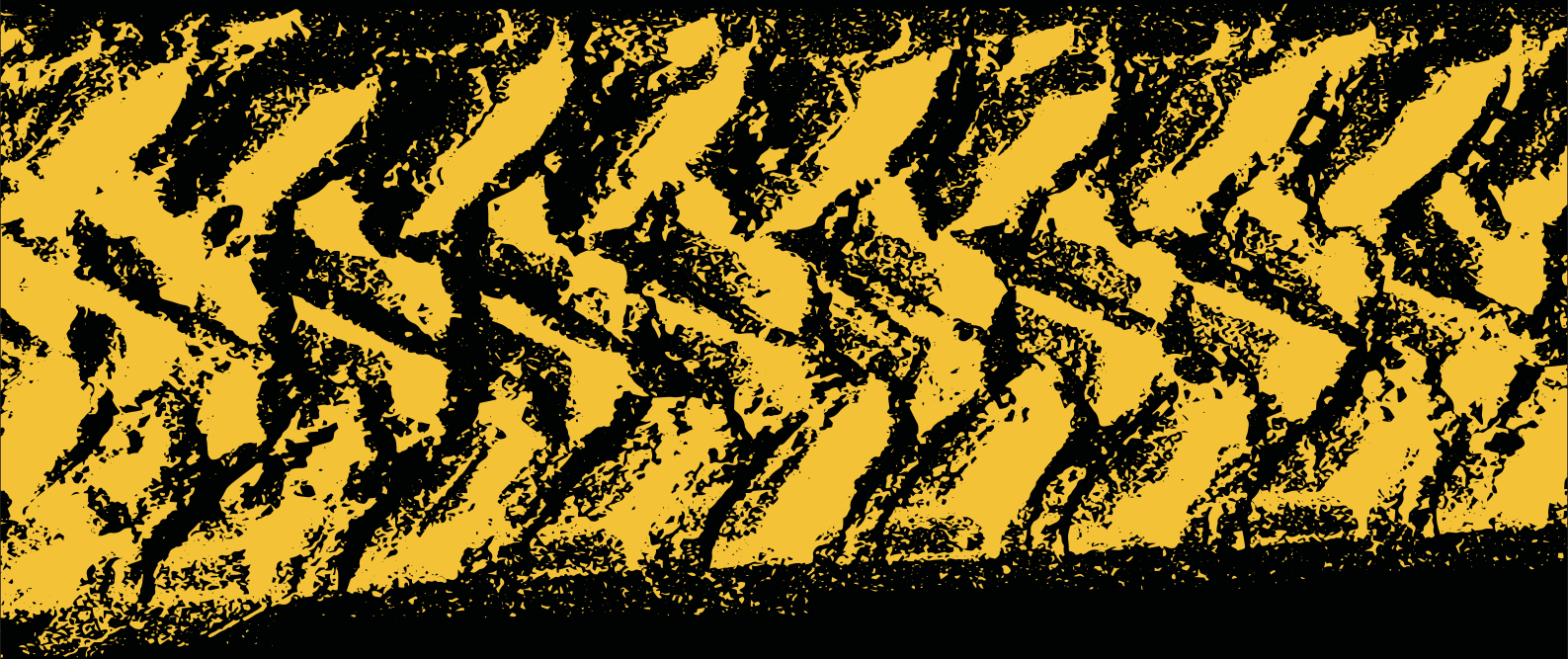




**KINETIC RECOVERY ROPE
USER MANUAL**



BI-TR-196-K / BI-TR-259-K

V1.0

BUNKER INDUST, a disruptive force that aims to help people pursue their passions in the great outdoors with rugged looks and impeccable safety, is a professional provider of a full lineup of 4x4 upgrades and accessories that enable off-road enthusiasts to upgrade their vehicles and pursue an outdoor lifestyle.

At BUNKER INDUST, we regularly spend time outdoors to understand your desire to have an ideal rig. But that move is challenging and time-consuming. But it's what sets us apart. Because we are driven by enthusiasm, not commission, and share the same passion for vehicle upgrade as you do.

When you decide to build a vehicle to hit the trails, BUNKER INDUST is here to prepare it with virtually all the off-road parts required to keep you safe, and make sure your vehicle looks and performs as you want it to.

BUNKER INDUST, Build Your Own Legend.

WHAT'S INCLUDED

1PC(s) Kinetic Recovery Rope

2PC(s) Soft Shackles

1PC(s) Storage Bag



WARNING
INCORRECT USE MAY RESULT IN INJURY OR DEATH



Follow product instructions strictly. Properly attach the motor vehicle recovery rope only to a designated recovery point or device, as a standard tow ball or tie-down point is not designed for this purpose. Incorrect use may lead to the rope or a vehicle component detaching, posing a serious risk of injury or death. Only connect the rope to a recovery point or device with a suitable rating, as incorrect use has previously resulted in serious harm and fatalities.

SAFETY WARNINGS AND INSTRUCTIONS

- It is recommended that the rope's minimum breaking strength (MBS) is between two to three times the vehicle's gross vehicle mass (GVM). When using a recovery rope for vehicle recovery, match the MBS to the GVM of the lighter vehicle involved.
- Use the appropriately rated recovery rope to ensure safe recovery. Using a rope with excessive breaking strength on a light vehicle may result in insufficient stretch and additional stress on the recovery points.
- Consider completing a nationally recognized four-wheel-drive training course or consulting a four-wheel-drive club for guidance.
- Do not use the rope for lifting or standard towing purposes.
- Users should verify the rope's condition, ensuring it remains undamaged and suitable for use.
- Note that the rope's strength and elasticity diminish when saturated.
- During use, employ a recovery damper, heavy bag, or blanket draped over the rope to minimize unintentional rebound.
- Those involved in the recovery process must keep a safe distance (at least 1.5 times the length of the unstretched rope) from the vehicles involved in the recovery, positioned to the side of the recovery line. Never stand in the path of the recovering vehicle.

CARE AND MAINTENANCE

- Avoid contact with petroleum-based products, acids, or alkaline solutions when using the Kinetic Rope.
- Store the rope away from direct sunlight and damp or humid conditions.
- Wait 24 hours before tightly wrapping the rope after a recovery.
- Clean the rope with warm, pH-neutral soapy water, allowing it to dry in the shade. Never pack the rope away when wet.

CONDUCTING A KINETIC VEHICLE RECOVERY

- Position the recovery vehicle within reach of the recovery rope, preferably directly in line with the desired pulling direction.
- Unroll the rope and securely connect it to a designated recovery point on each vehicle using the provided soft shackle. Ensure the rope is free of twists, and confirm proper alignment of the soft shackles (Fig.1). Leave approximately 2~3 meters of slack rope between the vehicles.
- Attach a recovery damper to the rope at the midpoint between the vehicles.
- Ensure the recovery area is clear of bystanders, maintaining a safe distance as prescribed.
- Once both vehicles are in contact, the recovery vehicle should gradually speed up, removing any slack in the rope and moving forward. Use the rope's built-up energy to pull out the stuck vehicle. It's helpful if the stranded vehicle tries to drive at the same time. If the first attempt isn't successful, speed up the rescue vehicle.
- NOTE: Excessive speed and repetitive jerking during recovery may damage the recovery point, chassis, and drive line of both vehicles. If the recovery rope proves ineffective, switch to an appropriately sized recovery winch.
- After getting unstuck, make sure not to drive over the recovery rope to avoid any damage.
- Only remove the recovery rope when both vehicles are parked and securely in place.

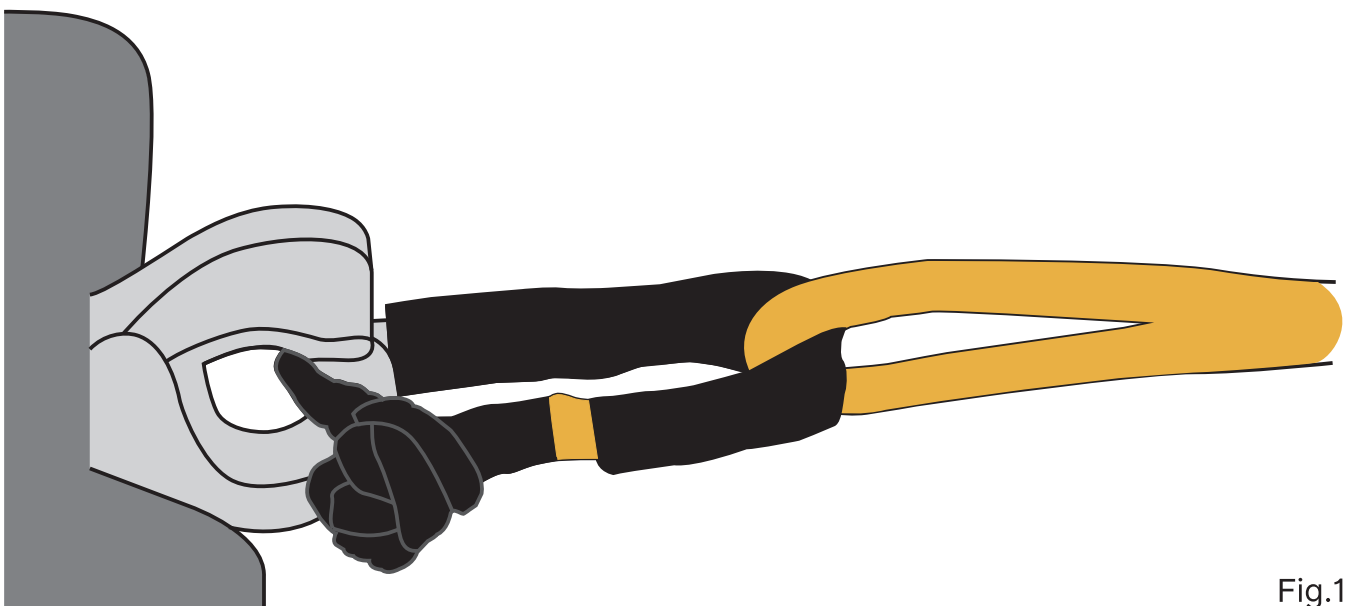


Fig.1

SPECIFICATIONS

		BI-TR-196-K	BI-TR-259-K
ROPE	Material	Nylon 66	
	Length	20ft(6.10m)	30ft(9.14m)
	Diameter	3/4in(1.91cm)	1in(2.54cm)
	Color	Black + Yellow	
	Minimum Breaking Strength	18,700lbs(8,482kg)	34,000lbs(15,422kg)
SHACKLE	Material	UHMWPE	
	Length	24in (60.96cm)	
	Diameter	0.39in(1cm)	0.47in(1.2cm)
	Color	Black + Yellow	
	Minimum Breaking Strength	18,700lbs(8,482kg)	34,000lbs(15,422kg)
SLEEVE	Material	Polyester	
	Color	Black	
	Product Weight	4.63lbs(2.1kg)	7.05lbs(3.2kg)

WARRANTY

BUNKER INDUST warrants that each recovery tow rope with soft shackles that is purchased while this Warranty is in effect will be free from defects in materials and workmanship for a period of 2 years from the date of receiving the product from BUNKER INDUST or its authorized distributor/dealer. If it is believable to be defective during the 2-Year Warranty Period, BUNKER INDUST will, at its option, replace it with the same or similar product, or will issue a refund for the defective BUNKER INDUST product. And BUNKER INDUST will pay for the cost of shipping or transportation of a defective component. This warranty terminates if a purchaser transfers the product to any other person. And please retain your purchase receipt for your records.

Any and all warranty coverage does not cover: normal wear and tear, damages as a result of failure to follow information in the user manual, improper or negligent use or misuse, using the BUNKER INDUST recovery tow rope with soft shackles other than for the purpose for which it was originally designed, failure to follow relevant vehicle safety and compliance laws, improper repair or maintenance, alteration, acts of nature, terrorism, vandalism, collision, road hazards or adverse conditions.

If further information or investigation is required or if the claim does not meet the requirements under our warranty, BUNKER INDUST'll let you know.