

## DANCEWEAR

Leotards  
Skirts  
Warmup  
Unitards & more

## ACTIVEWEAR

Tops  
Bottoms  
Jackets & more

## SPORTSWEAR

Artistic Gymnastics  
Skating  
Rhythmic  
Aerobic  
Cheer & more

## ESSENTIALS

Undergarments, Hosiery, Hair & Shoe Accessories  
Bags & more

## SHOWCASE

Tutus  
Contemporary - Lyrical  
Jazz, Tap & more

## SHOES

Ballet & Pointe, Jazz, Tap, Highland, Dance Sport  
Gymnastic, Street Dance & more



### New Zealand

75 Waverley Road, RD3, Napier 4183  
Tel +64 6 843 7865 • Fax +64 6 843 7866  
Email [pw@pwdancewear.co.nz](mailto:pw@pwdancewear.co.nz)  
[www.pwdancewear.com](http://www.pwdancewear.com)

### Australia

Unit 7/ 87 Kelliher Road, Richlands, Brisbane 4077, Queensland  
Tel +61 7 3271 1935 • Fax +61 7 3271 1976  
Email [orders@pwdancewear.com.au](mailto:orders@pwdancewear.com.au)  
[www.pwdancewear.com](http://www.pwdancewear.com)

### Malaysia / Singapore

1A, Lorong Awan Jawa, Taman Yarl.  
58200, Kuala Lumpur, Malaysia.  
Mobile: +6012-369 0277 • Office: +603-7984 0277  
Fax: +603-7986 0287  
Email [sales@dancenap.com.my](mailto:sales@dancenap.com.my)

Connect with us



[www.pwdancewear.com](http://www.pwdancewear.com)



## ACTIVEWEAR





It is my pleasure to release our latest PW Dance & Sportswear catalogue featuring our newest products - our Activewear Range. For over 30 years PW Dance & Sportswear has been a trusted international brand, creating quality apparel, costuming and essentials for the performance, dance, and sport industries.

The close relationships we have developed with our customers over this time have allowed us to not only understand their performance needs but enhance our production methods in our own factory to create industry leading designs.

Considering our experience designing movement specific attire, it was only a matter of time before PW Dance & Sportswear evolved further. What a labour of love it has been! From perfecting designs, patterns, fabrics, colours and ensuring our newest offerings are still durable and customisable - the team at PW Dance & Sportswear have certainly been busy.

**PW Dance & Sportswear's new range is activewear you can be confident wearing - knowing your purchase will perform to the highest industry standards.**

Many of our designs have been made with customisation in mind - giving clubs and studios the ability to create unique identifiable wear that is fashionable and durable. For those interested in starting your customisable journey - please reach out to our team, who will gladly help you with this process.

Our newest range is available through our online and retail stores, as well as selected retailers and dance schools. If you would like a highly customised uniform for a troupe or team, or for those interested in stocking our range, please contact our team.

I hope you enjoy our latest catalogue.

**Vickie Thomas**  
Founder & Managing Director



Erin wearing CWJ14 with Revolution Leggings  
and Snuggle Boots sublimated Chevron Clouds Candy Pink

**Sizes** Unless otherwise stated, all items are available in:

**Child** 4.6.8.10.12

**Adult** Xsm. Sm. Med. Lg. Xlg

## Fabrics

PW sources the best fabrics available and offer our Activewear garments in an array of fabric types – Please refer to our **Essentials Catalogue** for fabrics and colours available.

## Customisation

PW can customise any garment offered. Simply send us a high-resolution image of your logo or design and we will recommend the best customising method. These options may include:

**Print & Cut** — Logo is heat pressed onto garment.

**Embroidery** — Logo embroidered onto garment.

**Sublimation** — Printed into the fabric. This is best suited for printing textures and patterns that take up a large amount of the chosen garment. Only suitable for 100% polyester eg our Micro Dri, Lotto, Drift and Microfibre.

Please contact one of our sales team for more information at [info@pwdancewear.co.nz](mailto:info@pwdancewear.co.nz)

## Care Instructions

Constant wear and washing will cause fading and deterioration of foils. On our speciality lycras deodorants and perspiration can cause fading, discolouration and colour run. This can occur even if washing instructions are followed. Do not leave a damp garment in a bag as colour bleed may occur.

## Washing Instructions

It is recommended you wash your garment before use. Wash separately on a gentle or hand wash cycle using mild liquid detergent with the garment turned inside out. DO NOT soak, and air dry immediately after wash. PW can not guarantee any garment that has not been washed and dried as directed

## Sizing Guide

\* Please see our **Essentials Catalogue** for full details on how to measure.

SIZE	BUST	WAIST	HIP	TORSO	INNER LEG
4	50 - 55	45 - 49	56 - 60	98 - 108	50 - 54
6	56 - 61	50 - 55	61 - 65	108 - 118	55 - 59
8	62 - 67	55 - 60	66 - 70	118 - 128	60 - 64
10	68 - 73	61 - 66	71 - 75	128 - 135	65 - 69
12	74 - 79	67 - 72	76 - 80	135 - 140	70 - 74
XSM	77 - 82	58 - 63	82 - 87	142 - 146	73 - 75
SM	83 - 88	64 - 69	88 - 93	147 - 152	75 - 77
MED	89 - 94	70 - 75	94 - 99	153 - 158	77 - 79
LG	95 - 100	76 - 81	100 - 105	159 - 164	79 - 81
XLG	101 - 106	82 - 87	106 - 111	165 - 170	81 - 83

\*All sizes are in cm

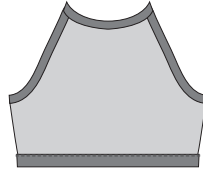


**Nic** wearing Hip Hop Tee 11 with Hip Hop Shorts

**Kacia** wearing Go Solo Top

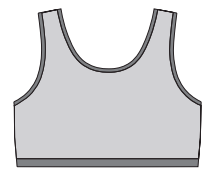
**Ella** wearing HH Croptop with HH Leggings High Waist 01

### Amira Croptop



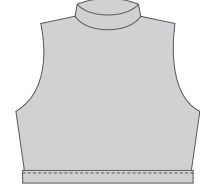
Fabric: Micro Dri or Special Lycra

### Ava Croptop



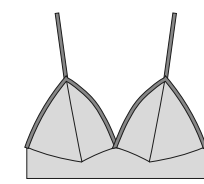
Fabric: Micro Dri or Special Lycra

### Blaze Croptop



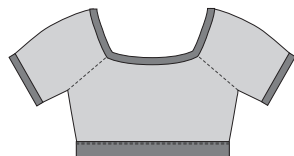
Fabric: Micro Dri or Special Lycra

### Bralette



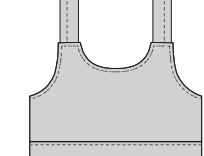
Fabric: Micro Dri or Special Lycra

### Cap Sleeve Croptop



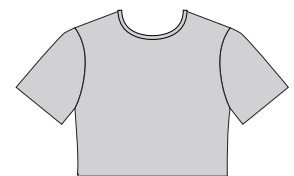
Fabric: Micro Dri or Special Lycra

### Cosmos Croptop



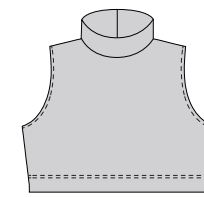
Fabric: Micro Dri or Special Lycra

### Faded Crop Tee



Fabric: Lotto or Drift Sublimated

### Gina Croptop



Fabric: Micro Dri, Nylon Lycra or Special Lycra



Waimarama wearing Muscleback Croptop with HH Leggings High Waist 03

## Haley Croptop



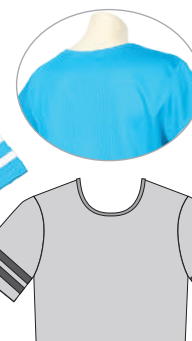
Fabric: Micro Dri, Nylon Lycra, Special Lycra

## Heartbreak Croptop



Fabric: Micro Dri with Stretch Mesh

## HH Croptop



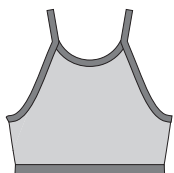
Fabric: Drifit

## Jogger Croptop



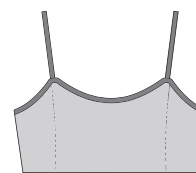
Fabric: Lotto

## Lattice Croptop



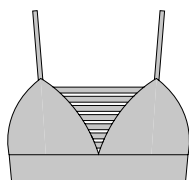
Fabric: Micro Dri or Special Lycra

## Linear Croptop



Fabric: Special Lycra

## Maya Croptop



Fabric: Micro Dri or Special Lycra

## Muscleback Croptop



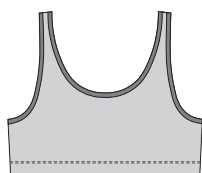
Spider Mesh



Lace

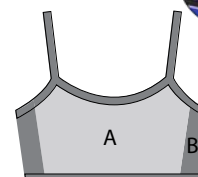
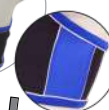
Fabric: Micro Dri, Special Lycra, Nylon Lycra

## Peephole Croptop



Fabric: Micro Dri

## Piper Croptop



Fabric: Micro Dri or Special Lycra

## Reckless Croptop



Fabric: Micro Dri, Sequinned, Special Lycra with Stretch Mesh

## Retro Cropped Tee

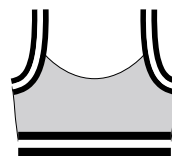


Fabric: Lotto or Drifit



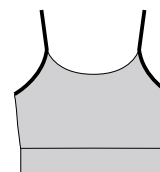
Tahlia wearing Skylar CROPTOP with Shimmer Bikepants

## Revive CROPTOP



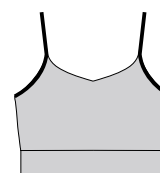
Fabric: Micro Dri with Black & White Elastic Trim

## Samira CROPTOP



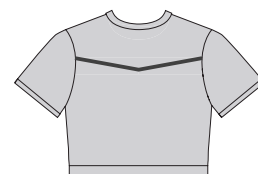
Fabric: Micro Dri, Nylon Lycra, Special Lycra

## Sasha CROPTOP



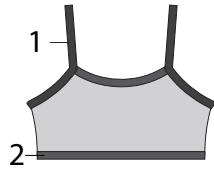
Fabric: Micro Dri, Nylon Lycra, Special Lycra

## Skylar CROPTOP



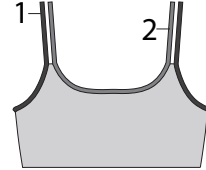
Fabric: Micro Dri with Stretch Mesh

### ST 140 Croptop



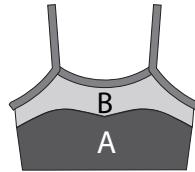
**Fabric:** Micro Dri, Nylon Lycra, Special Lycra

### ST 240 Croptop



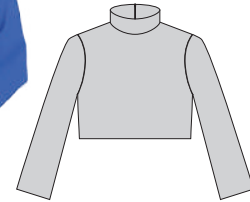
**Fabric:** Micro Dri, Nylon Lycra, Special Lycra

### ST 348 Croptop



**Fabric:** A: Micro Dri or Nylon Lycra  
B:Special Lycra

### Tina Croptop



**Fabric:** Micro Dri, Nylon Lycra, Special Lycra

### Twist Font Croptop



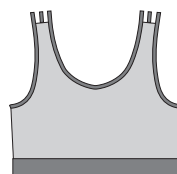
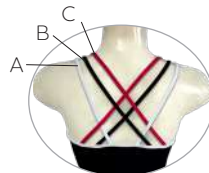
**Fabric:** Micro Dri

### Tyra Croptop



**Fabric:** Micro Dri

### Vibe Croptop



**Fabric:** Micro Dri

### X Back Croptop



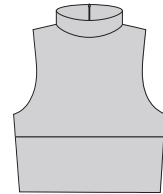
Sequined

**Fabric:** Micro Dri, Special Lycra, Nylon Lycra  
Micro Dri Sequined



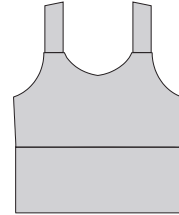
Waimarama wearing Vibe Mid Crop with Drift Shorts

### Blaze Mid Crop



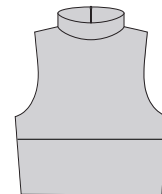
Fabric: Micro Dri

### Cosmos Mid Crop



Fabric: Micro Dri

### Gina Mid Crop



Fabric: Micro Dri, Nylon Lycra, Special Lycra

### Oasis Mid Crop

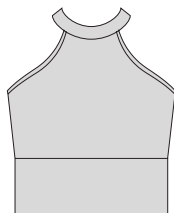


sublimated



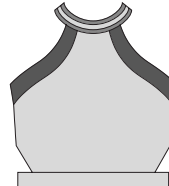
Fabric: Micro Dri with optional back plain or with any sublimation

### Raven Mid Crop



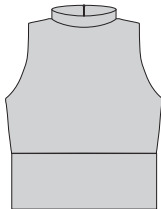
Fabric: Micro Dri

### Rebel Mid Crop



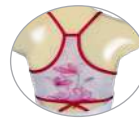
Fabric: Micro Dri with Black & White Elastic Trim

### Reveal Mid Crop



Fabric: Micro Dri

### Rosa Mid Crop



Jade

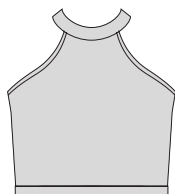
Raspberry

Blue

Cerise

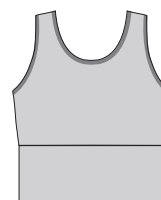
Fabric: Micro Dri with Stretch Mesh Sublimated back

### T Back Mid Crop



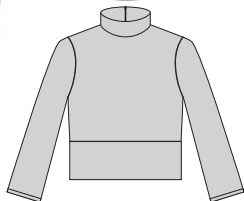
Fabric: Micro Dri

### Tyra Mid Crop



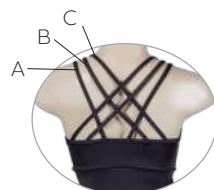
Fabric: Micro Dri

### Tina Mid Crop



Fabric: Micro Dri, Nylon Lycra, Special Lycra

### Vibe Mid Crop



Fabric: Micro Dri



Kacia wearing Active Singlet with Hip Hop Leggings 02

### Active Singlet



Fabric: Micro Dri

### Aspen Singlet



Fabric: Micro Dri

### Ava Top



Fabric: Micro Dri

### CWT Reversible Knot Top



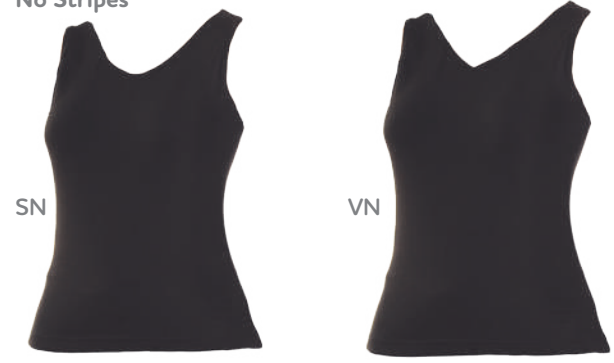
Fabric: Rayon Jersey

## CWT Silhouette



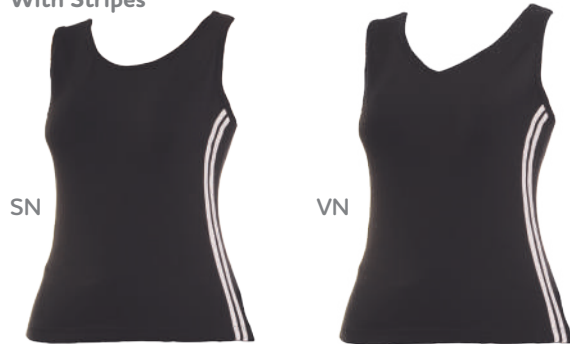
Fabric: Micro Dri White

## JZ 602 No Stripes



Fabric: Micro Dri or Nylon Lycra

## JZ 602 With Stripes



Fabric: Micro Dri or Nylon Lycra

## JZ 606 Top



Fabric: Micro Dri

## Maggie Top



Fabric: Micro Dri

## Muscle Tank



Fabric: Micro Dri

## Muscleback Singlet



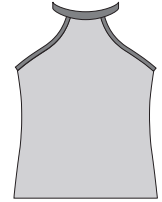
Fabric: Micro Dri or Special Lycra

## Raven Top



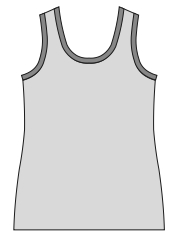
Fabric: Micro Dri

## Reckless Top



**Fabric:** Micro Dri or Special Lycra with Stretch Mesh back

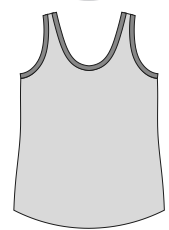
## SNMB Relaxed Fit



**Fabric:** Drifit

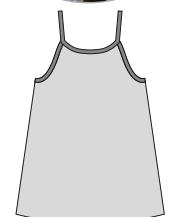
## Slouch Singlet

Curved Hem



**Fabric:** Drifit

## Split Back Top



**Fabric:** Micro Dri with Rayon Jersey.



Ella wearing Split Back Top and 3/4 Active Leggings

### ST 117



Fabric: Micro Dri, Nylon Lycra, Special Lycra

### ST 119



Fabric: Micro Dri

### ST 140



Fabric: Micro Dri

### ST 145



Fabric: Micro Dri or Special Lycra

### ST155



Fabric: Micro Dri with Stretch Mesh

### Strappy Tank



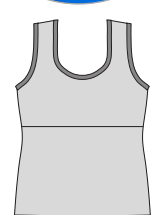
Fabric: Micro Dri

### Strike Top



Fabric: Micro Dri

### Tyra Top

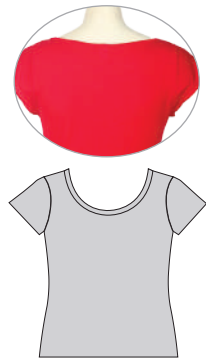


Fabric: Micro Dri



Ella wearing Curved Hem Tee with Front Tie Shorts

## Casual Tee



Fabric: Rayon Jersey or Drift

## Curved Hem Tee



Fabric: Rayon Jersey or Drift

## Tee Shirt



Fabric: Micro Dri

## Tee Shirt Cap Sleeve



Fabric: Micro Dri

## Colour Block Tee



Fabric: Lotto

## Hooded Tee



Fabric: Lotto

## Live Dance Tee



Fabric: Rayon Jersey, colour as shown

## Live To Move Tee



Fabric: Rayon Jersey, colour as shown

## Glitter Tee



Gymnast  
Colour: as shown

Dancer

## Camo Print



Male

Female

Fabric: Lotto

## Retro Tee



Fabric: Lotto

## Ombre Tee

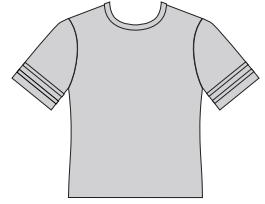


Fabric: Lotto or Drift Sublimated



Barney wearing Raw Cut Tank with Hip Hop Shorts

## HHT Crewneck



Fabric: Drift

## Hip Hop Singlet



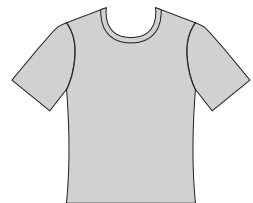
Fabric: Micro Dri, Special Lycra, Spider Mesh

## Hip Hop Singlet 03



Fabric: Micro Dri

## Hip Hop Tee



Fabric: Micro Dri, Nylon Lycra, Special Lycra

## Hip Hop Tee 02



**Fabric:** Micro Dri with Special Lycra trim

## Hip Hop Tee 05



**Fabric:** Micro Dri with Special Lycra trim

## Hip Hop Tee 11



**Fabric:** Micro Dri with Stretch Mesh Sleeves

## Raw Cut Tank



**Fabric:** Drift

## Triple Strap Top



**Fabric:** Rayon Jersey

**Unisex:** 6-8, 10-12, Sm, Lg

## Muscle Singlet (Mens)



**Fabric:** Micro Dri or Nylon Lycra

## Singlet (Mens)



**Fabric:** Micro Dri

## Tank Top (Mens)



**Fabric:** Micro Dri



**Holly** wearing Baseball Shirt & Muscleback Croptop  
with Balance Hotpants  
**Nic** wearing Baseball Shirt with Hip Hop Shorts

## Glitch Croptop



**Fabric:** Lotto with Micro Dri trim - suitable to sublimate

## Hooded Top



**Fabric:** Lotto

## Drop Tail Tee



**Fabric:** Rayon Jersey with Special Lycra trim

## Go Solo



**Fabric:** Lotto with Micro Dri trim

## Baseball Shirt



**Fabric:** Drift with Micro Dri Piping

## Rec Shirt



**Fabric:** Lotto or Drift Sublimated

## Basketball Singlet



**Fabric:** Lotto

## Baseball Tee



**Fabric:** Lotto or Drift suitable for sublimation

## Colour Block Sweater 01



**Child:** 2-4, 6-8, 10-12 **Adult:** Xsm-Sm, Med-Lg, Xlg-2xlg  
**Fabric:** Lotto with Micro Dri trim

## Colour Block Sweater 02



**Child:** 2-4, 6-8, 10-12 **Adult:** Xsm-Sm, Med-Lg, Xlg-2xlg  
**Fabric:** Cotton Combat with Special Lycra trim

## Oversized Sweater



**Child:** 2-4, 6-8, 10-12 **Adult:** Xsm-Sm, Med-Lg, Xlg-2xlg  
**Fabric:** Cotton Combat

## Drop Tail Sweater

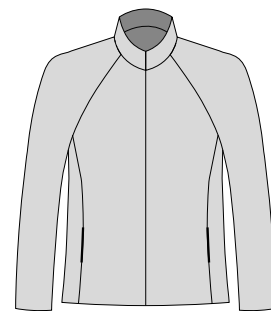


**Child:** 2-4, 6-8, 10-12 **Adult:** Xsm-Sm, Med-Lg, Xlg-2xlg  
**Fabric:** Lotto plain or sublimated



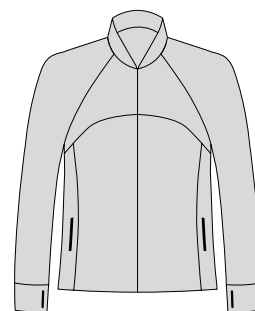
Lily wearing Bomber Jacket 01 & Muscleback Croptop with Sport Shorts .

## Academy Jacket



**Fabric:** Microfibre with Brushed Lining

## Activate Jacket



**Fabric:** Micro Dri

## Bomber Jacket 01



**Fabric:** Lotto or PE Fleece and ideal for sublimation

## Bomber Jacket 02



Fabric: Lotto plain or sublimated

## Boston Cropped Hoodie



Fabric: Micro Dri

## Boston Hoodie



Fabric: Micro Dri

## Cropped Hoodie



Fabric: Micro Dri

## CWJ 09



Fabric: Micro Dri

## CWJ 11

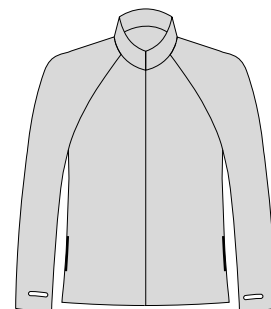


Fabric: Micro Dri



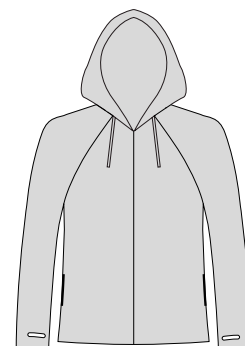
Ella wearing CWT 03 with Cosmos Mid Crop & HH Bikepants HR 04

## CWJ 12



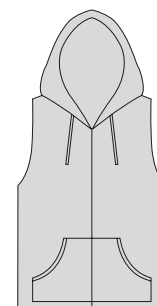
Fabric: Lotto or PE Fleece ideal for sublimation

## CWJ 14



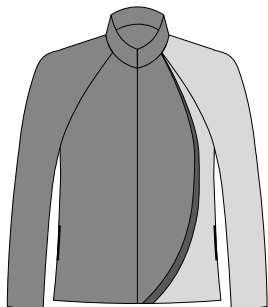
Fabric: Lotto or PE Fleece ideal for sublimation

## CWT 03



Fabric: Micro Dri

### Dart Jacket



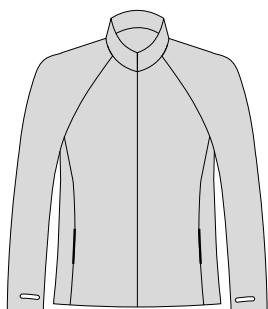
Fabric: Micro Dri and sublimated on left side

### Get Low Jacket



Fabric: Lotto with Micro Dri trim

### Endurance Jacket



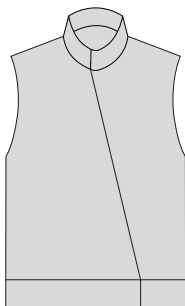
Fabric: Micro Dri or Velour (Black only)

### Endurance Hoodie Jacket



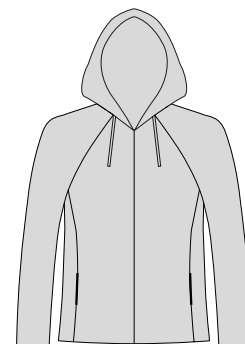
Fabric: Micro Dri or Velour (Black only)

### Hip Hop Vest



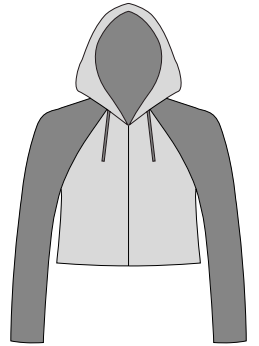
Fabric: Micro Dri

### Hoodie Jacket



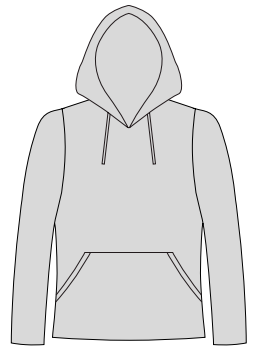
Fabric: Micro Dri or Velour in Black only

### No Trouble Jacket



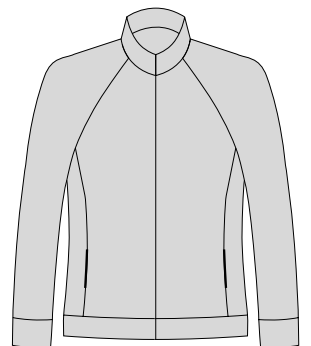
Fabric: Lotto plain or sublimated

### Houston Hoodie

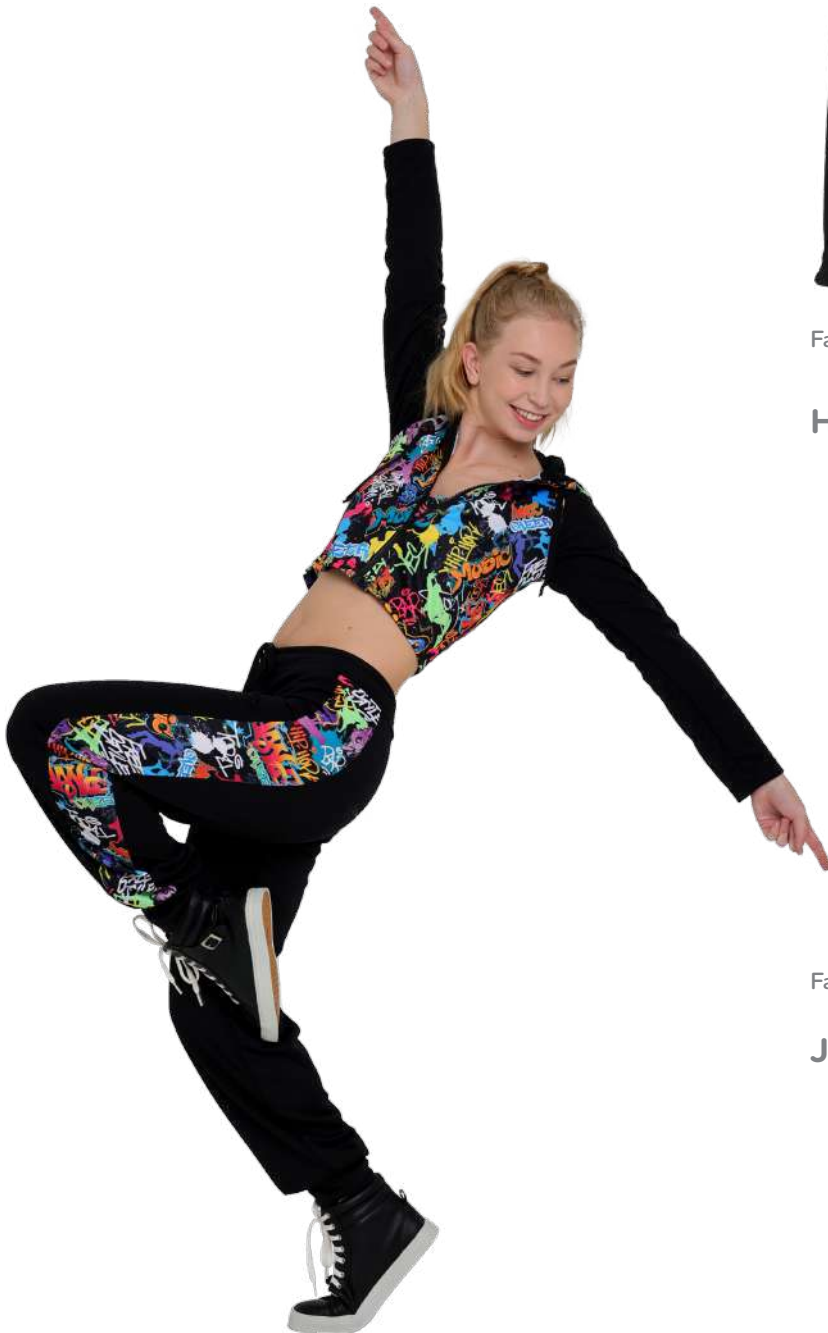


Fabric: Micro Dri or Rayon Jersey

### Jazz Jacket

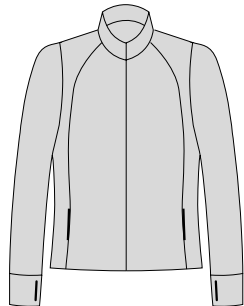


Fabric: Micro Dri



Ella wearing No Trouble Jacket & Pants  
with sublimated design Punk

### Jet Set Jacket -Fitted



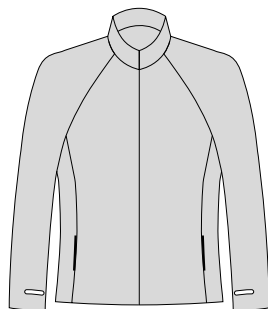
Fabric: Micro Dri

### Pull on Hoodie



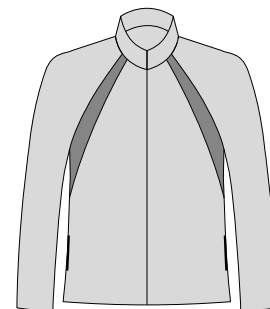
Fabric: Micro Dri

### Jogger Jacket



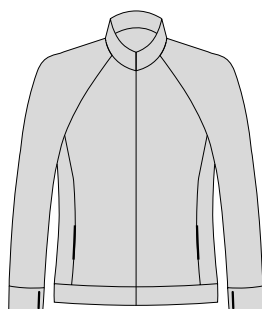
Fabric: Micro Dri

### Sleekline Jacket



Fabric: Micro Dri with Special Lycra trim

### Phoenix Jacket

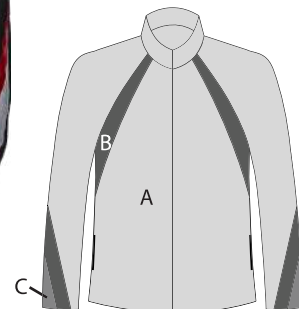


Cuff with thumbhole



Fabric: Micro Dri

### Streamline Jacket



Fabric: Micro Dri with Special Lycra trim



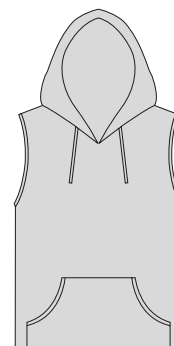
Nic wearing Runaway Hoodie with Hip Hop Shorts

## Runaway Hoodie



Fabric: Lotto

## Sleeveless Hoodie



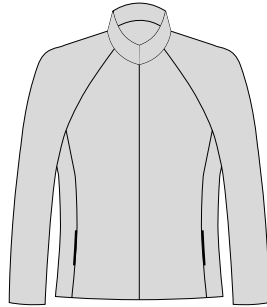
Fabric: Micro Dri or Rayon Jersey

## Varsity Jacket



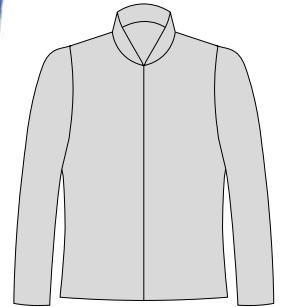
Fabric: Drill with Knit Sleeves & Ribbed Collar, Cuffs & Bottom Band

## Warmup Jacket



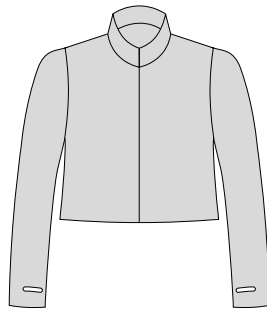
Fabric: Micro Dri or Velour in Black only

## Zip Top Long Sleeve



Fabric: Micro Dri

## Zip Cropped Jacket



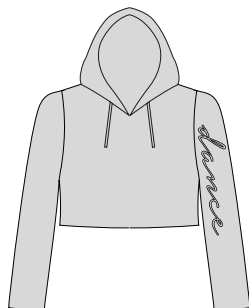
Fabric: Micro Dri

## Zip Cropped Hoodie Jacket



Fabric: Micro Dri

## Dance Cropped Hoodie



Fabric: Micro Dri as shown

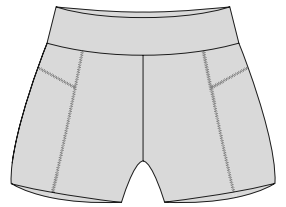
## On Pointe Cropped Hoodie



White  
Fabric: Lotto as shown

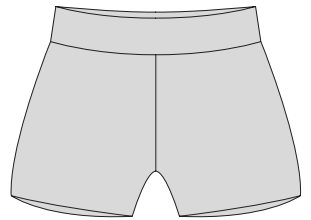
Black

## Active Hotpants



Fabric: Micro Dri with contrast stitching

## Agile Hotpants



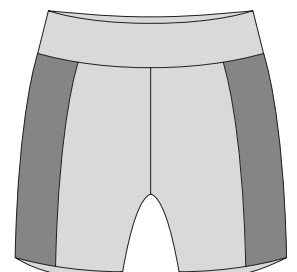
Fabric: Micro Dri

## Atlantis Hotpants



Fabric: Micro Dri sublimated side panel optional

## Align Hotpants

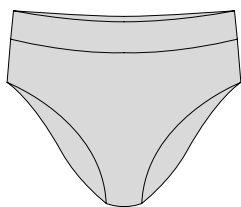


Fabric: Micro Dri, sublimated side panel Optional



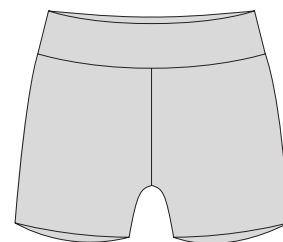
Ella wearing Align Hotpants sublimated panel Storm with Muscleback Croptop

### Balance Brief



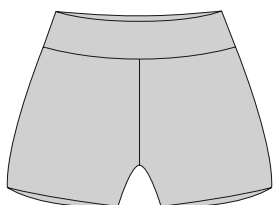
Fabric: Micro Dri, Nylon Lycra, Special Lycra

### Beckham Hotpants



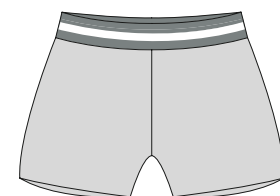
Fabric: Micro Dri

### Balance Hotpants



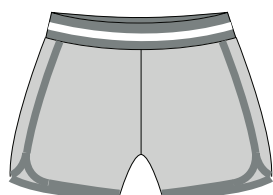
Fabric: Micro Dri

### Brooklyn Hotpants



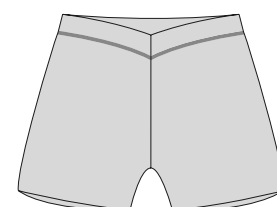
Fabric: Micro Dri with Black & White Elastic Trim

### Brooklyn Shorts



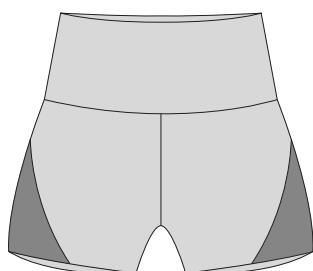
Fabric: Drift with Black & White Elastic Trim

### Dance Shorts



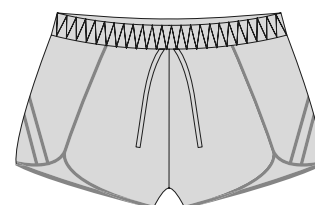
Fabric: Micro Dri

### Dart Hotpants



Fabric: Micro Dri with Sublimated panel

### Drift Shorts

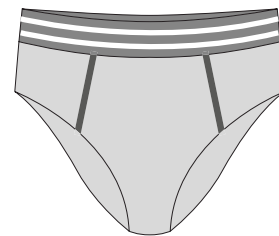


Fabric: Drift



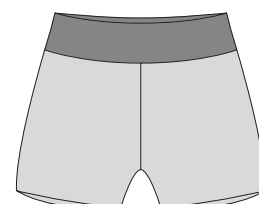
Ella wearing Hooded Tee with Drift Shorts

## Ferrari Brief



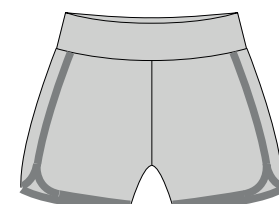
Fabric: Micro Dri, Nylon Lycra, Special Lycra

## Foldover Hotpants



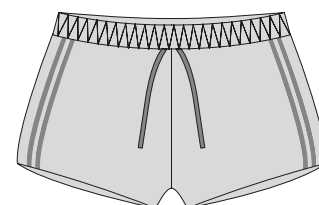
Fabric: Micro Dri

## Freeman Shorts



Fabric: Drift with Micro Dri waistband

## Front Tie Shorts



Fabric: Micro Dri

## High Waist Pants

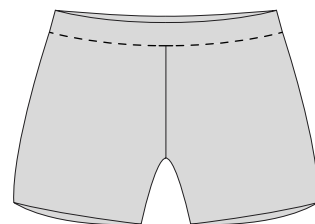


Micro Dri



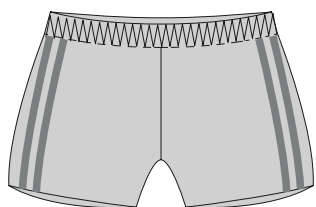
Sequinned

## Hotpants



Fabric: Micro Dri, Nylon Lycra, Special Lycra

## Jogger Shorts



Fabric: Lotto plain or sublimated (Stripes Optional)

## Madrid Shorts



Lace



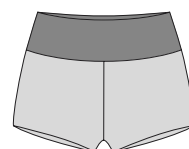
Sequinned



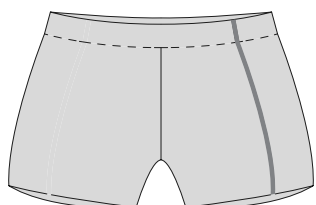
Special



Micro Dri



## Piper Hotpants

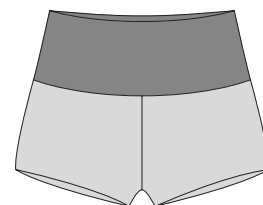


Fabric: Micro Dri and sublimated side panel optional

## Shimmer Pants



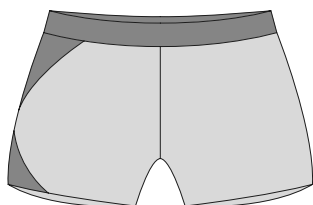
Fabric: Micro Dri or Special Lycra



## Spliced Hotpants



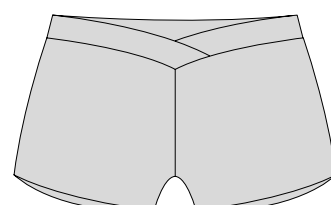
Fabric: Micro Dri



## VW Boyleg



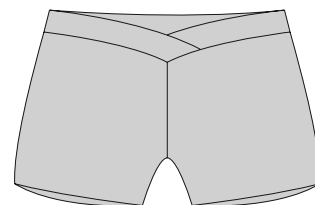
Fabric: Micro Dri, Nylon Lycra, Special Lycra





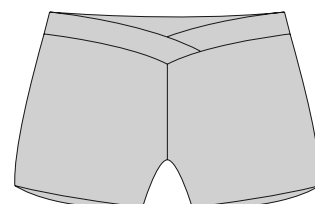
Tahlia wearing Blaze Croptop with Shimmer Bikepants

## VW Hotpants



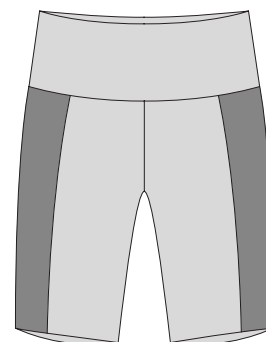
Fabric: Micro Dri, Nylon Lycra, Special Lycra

## VW Hotpants Emb



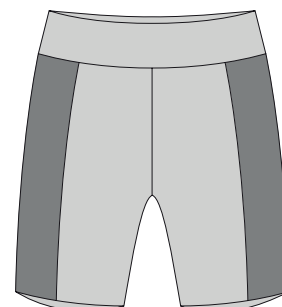
Fabric: Micro Dri

## Atlantis Bikepants



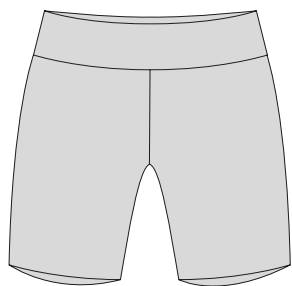
Fabric: Micro Dri, sublimated side panel optional

## Align Bikepants



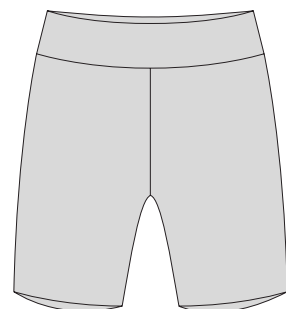
Fabric: Micro Dri, sublimated side panel optional

## Balance Bikepants



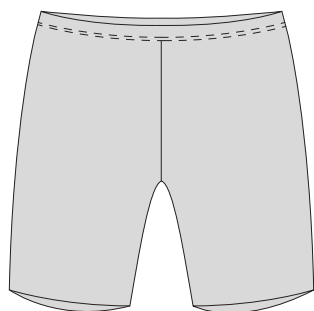
Fabric: Micro Dri

## Beckham Bikepants



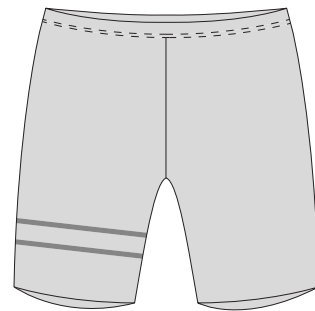
Fabric: Micro Dri

## Bikepants MENS available



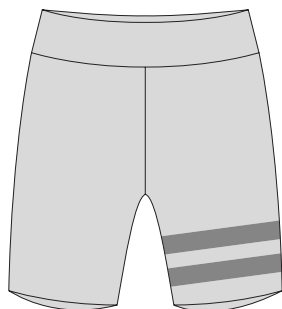
Fabric: Micro Dri, Nylon Lycra, Special Lycra

## HH Bikepants



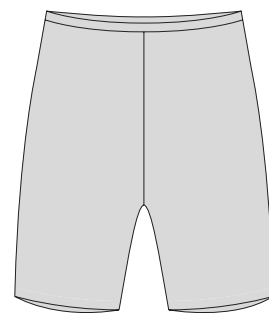
Fabric: Micro Dri

## HH Bikepants High Rise 04



Fabric: Micro Dri

## High Waist Bikepants



Fabric: Micro Dri or Special Lycra

## Hip Hop Shorts



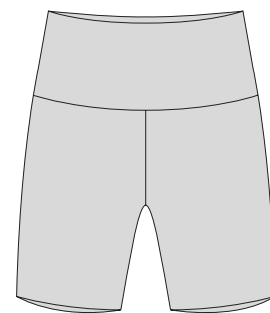
Stripe



No Stripe

Fabric: Drift or Lotto

## Shimmer Bikepants

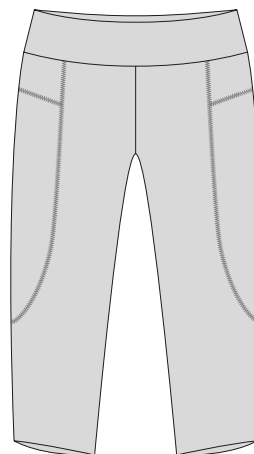


Fabric: Micro Dri or Special Lycra



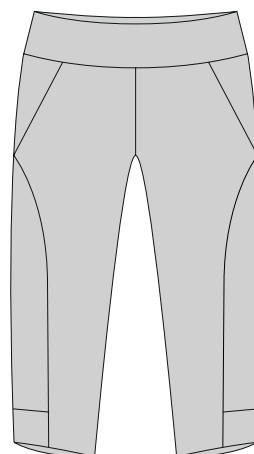
Asha wearing X Back Croptop with 3/4 Leggings with sublimated design Words

### 3/4 Active Leggings



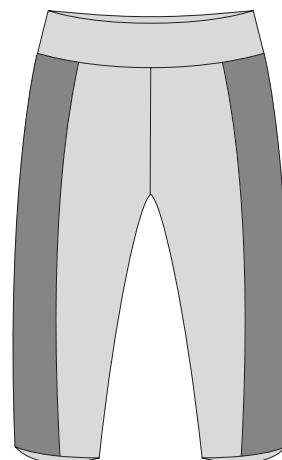
Fabric: Black Micro Dri with contrast stitching

### 3/4 Aerial Leggings



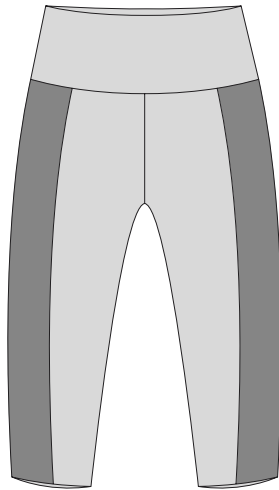
Fabric: Micro Dri, sublimated panel optional

### 3/4 Align Leggings



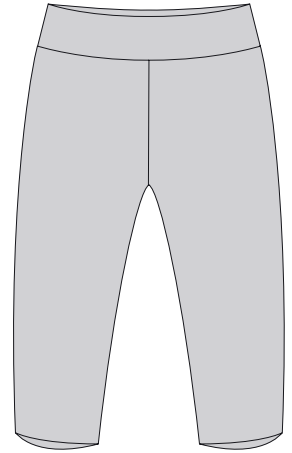
Fabric: Micro Dri, sublimated side panel optional

### 3/4 Atlantis Leggings



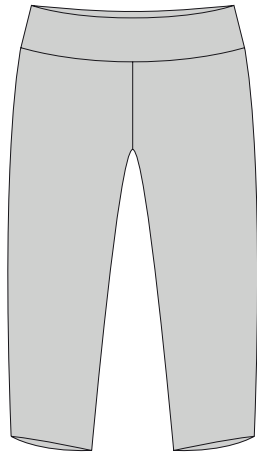
**Fabric:** Micro Dri. sublimated side panel optional

### 3/4 Beckham Leggings



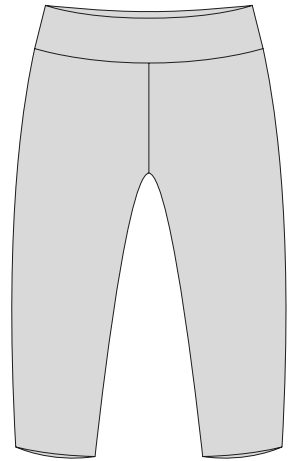
**Fabric:** Micro Dri

### 3/4 Balance Leggings



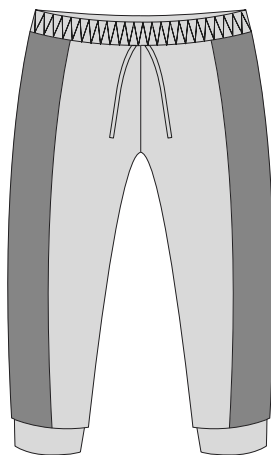
**Fabric:** Micro Dri

### 3/4 Foldover Leggings



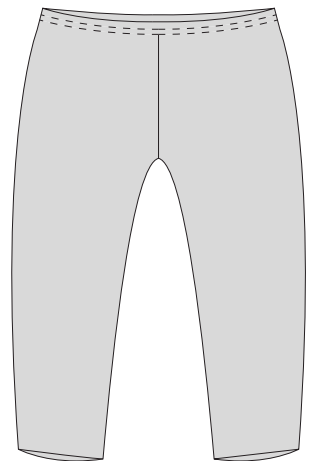
**Fabric:** Micro Dri

### 3/4 Harem Pants



**Fabric:** Lotto. Side Panel can be Sequinned or Sublimated

### 3/4 Leggings

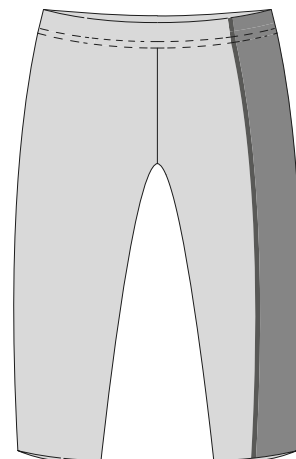


**Fabric:** Micro Dri, Nylon Lycra, Special Lycra



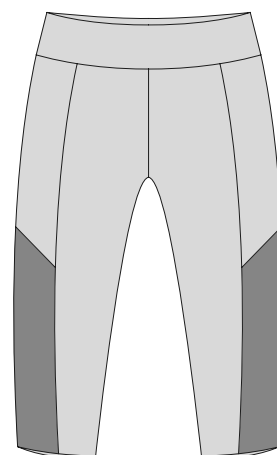
Bella wearing Revive Croptop with Brooklyn Pedal Pushers

### 3/4 Piper Leggings



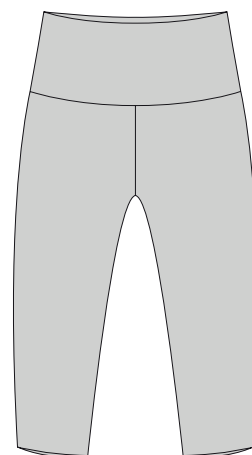
Fabric: Micro Dri, sublimated side panel optional

### 3/4 Revolution Leggings



Fabric: Micro Dri, sublimated side panel optional

### 3/4 Shimmer Leggings



Fabric: Micro Dri or Special Lycra

### 3/4 Urban Leggings



**Fabric:** Micro Dri with contrast stitching

### 3/4 VW Leggings



**Fabric:** Micro Dri, Nylon Lycra, Special Lycra

### Agile Pedal Pushers



**Fabric:** Micro Dri

### Brooklyn Pedal Pusher



**Fabric:** Micro Dri with Black & White Elastic Trim

### Pedal Pushers



**Fabric:** Micro Dri

### Drop Crutch Harem Pant



**Fabric:** Micro Dri with Elastic Trim

## Drop Crutch Hip Hop Pant



Fabric: Lotto plain or sublimated

## CWP 06



Fabric: Rayon Jersey, Cotton Combat, Lotto

## CWP 07

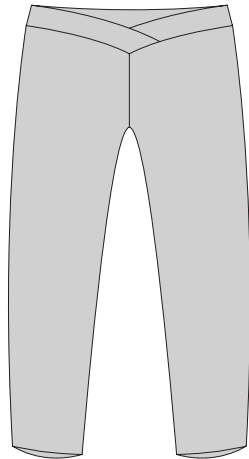


Fabric: Rayon Jersey, Cotton Combat, Lotto



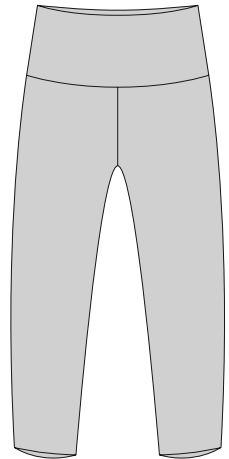
Ella wearing Faded Crop Tee with Align Leggings sublimated panel Half Tone Blue

### 7/8 VW Leggings



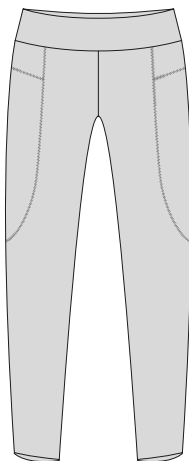
Fabric: Micro Dri

### 7/8 Shimmer Leggings



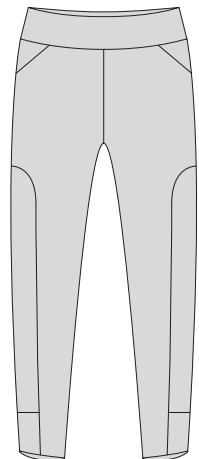
Fabric: Micro Dri

### Active Leggings



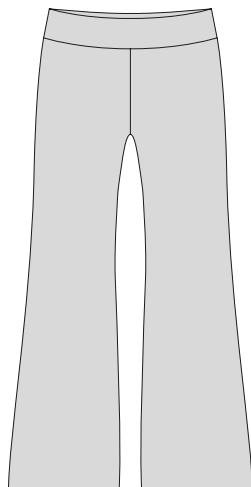
Fabric: Micro Dri with contrast stitching

### Aerial Leggings



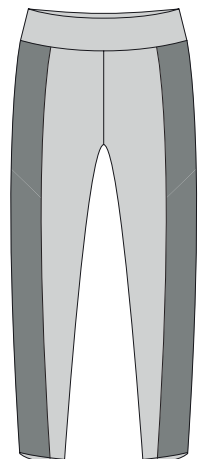
Fabric: Micro Dri, panels suitable sublimation

### Agile Pants



Fabric: Micro Dri

### Align Leggings

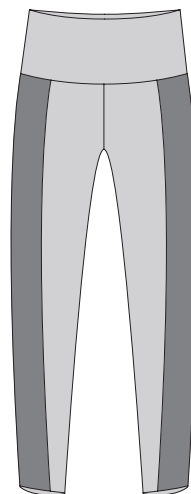


Fabric: Micro Dri, panels suitable sublimation



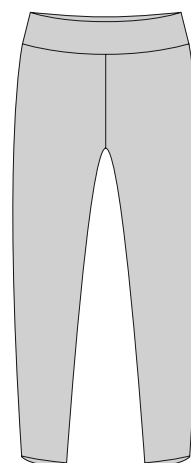
**Kacia** wearing Go Solo Top with Beckham Leggings

## Atlantis Leggings



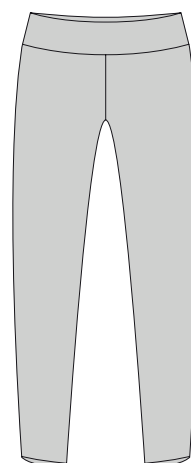
**Fabric:** Micro Dri. panels suitable sublimation

## Beckham Leggings



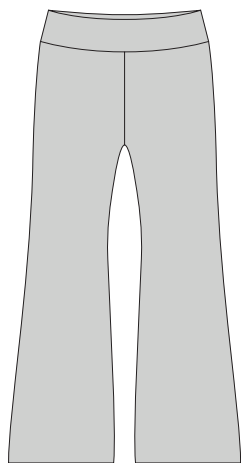
**Fabric:** Micro Dri

## Balance Leggings



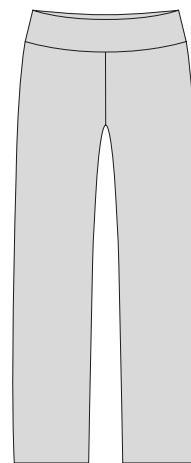
**Fabric:** Micro Dri or Special Lycra

### Beckham Bootleg



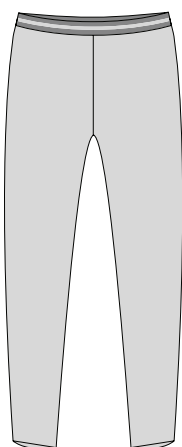
Fabric: Micro Dri or Nylon Lycra

### Bolero Pants (Male)



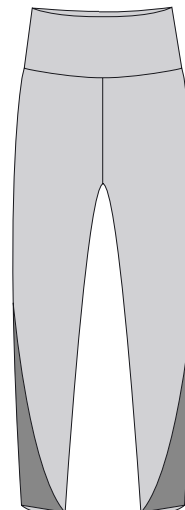
Fabric: Micro Dri or Nylon Lycra

### Brooklyn Leggings



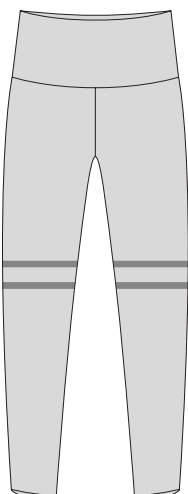
Fabric: Micro Dri with Black & White Elastic Trim

### Dart Leggings



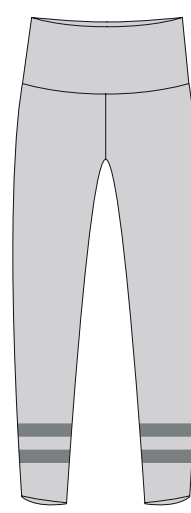
Fabric: Micro Dri with sublimated panel

### HH Leggings High Waist 01



Fabric: Micro Dri

### HH Leggings High Waist 03



Fabric: Micro Dri



Kacia wearing Foil Vest with HH Leggings High Waist 06

## HH Leggings High Waist 04



Fabric: Micro Dri

## HH Leggings High Waist 05



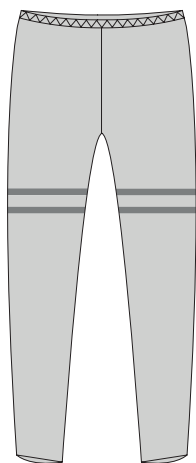
Fabric: Micro Dri

## HH Leggings High Waist 06



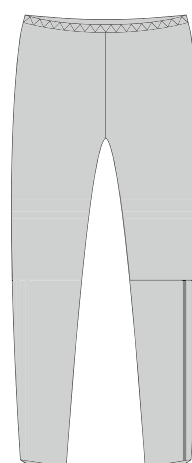
Fabric: Micro Dri. Special Lycra Inserts available

## Hip Hop Leggings



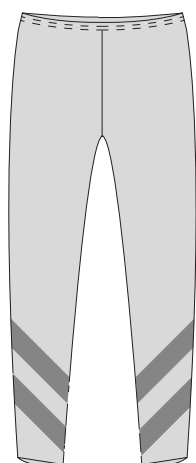
Fabric: Micro Dri

## Hip Hop Leggings 01



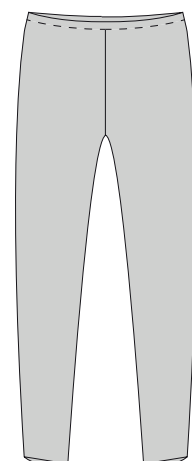
Fabric: Micro Dri

## Hip Hop Leggings 02



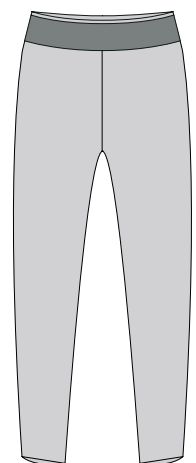
Fabric: Micro Dri

## Leggings



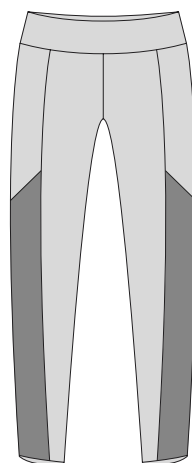
Fabric: Micro Dri, Nylon Lycra, Special Lycra or Sublimated

## Madrid Leggings



Fabric: Micro Dri with Sequined Waistband

## Revolution Leggings

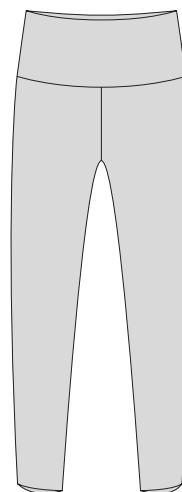


Fabric: Micro Dri. sublimated panel optional



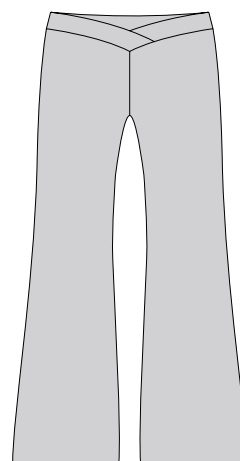
**Waimarama** Head High Jacket & Muscleback Croptop with Shimmer Leggings.

## Shimmer Leggings



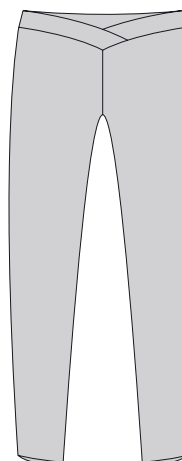
**Fabric:** Micro Dri or Special Lycra

## VW Bootleg



**Fabric:** Micro Dri or Nylon Lycra

## VW Leggings



**Fabric:** Micro Dri, Nylon Lycra or Special Lycra

## Arizona Pants



**Fabric:** Rayon Jersey with Micro Dri insert

## Boston Pants



**Fabric:** Rayon Jersey with Micro Dri insert

## CWP 012



**Fabric:** Lotto or Cotton Combat

## CWP 14



**Fabric:** Rayon Jersey

## CWP 16



**Fabric:** Lotto, Cotton Combat or Velour

## Colour Block Pants

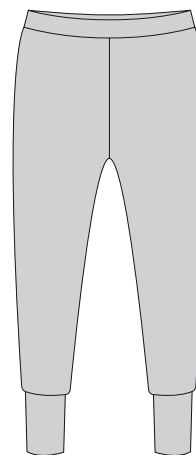


**Fabric:** Lotto with Micro Dri inserts



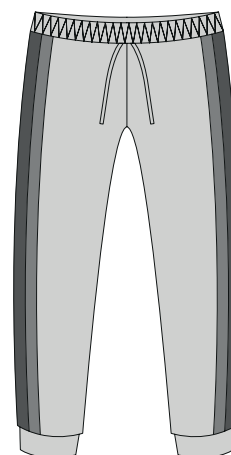
Ella wearing Double Trouble Pants with Tyra Mid Crop

## Dallas Pants



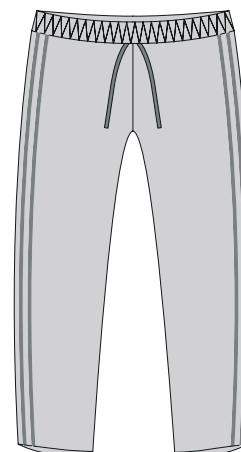
Fabric: Rayon Jersey or Hijet

## Double Trouble Pants



Fabric: Lotto

## Front Tie Pants



Fabric: Micro Dri

## No Trouble Pants



Fabric: Lotto. Side panel suitable for sublimation

## HHP 52



Fabric: Lotto

## Jogger Pants



Fabric: Lotto

## Nevada Pants Relaxed Fit



Fabric: Rayon Jersey, Lotto or Cotton Combat

## Oversized Sweat Pants



Fabric: Lotto plain or sublimated

## Studio Pants



Fabric: PE Fleece plain or sublimated side panel

# Team Wear

## Sizing Available

### Child

4 6 8 10 12

### Adult

xsm sm med lg xlg

**Fabric:** Tracksuits (TSJ) and Trackpants (TSP) are in Microfibre with a Drift Lining. Sport Trackie Jacket and Shorts are unlined and in Lotto. All fabrics are suitable for sublimation

### Drift

Knitted sport fabric that's breathable.



Blue



Royal



Navy



Turquoise



Purple



Orange



Cerise



Black



White

### Microfibre

Woven fabric suitable for Jackets and Pants. Shower proof



Blue



Turquoise



Royal



Navy



Pink



Cerise



Fluro Pink



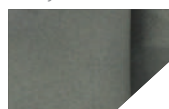
Fluro Orange



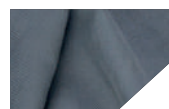
Gold



Fluro Yellow



Light Grey



Grey



Air Force Blue



Black



Mauve



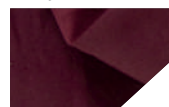
Purple



Red



Cherry



Burgundy



Lime



Army Green



Bottle



Camo



White

### Lotto

Knitted low stretch fabric suitable for Jackets and Pants



Black



Gunmetal



Grey



White



Dark Green



Teal



Green



Lime



Navy



Royal



Light Royal



Cornflower



Blue



Royal



Turquoise



Lavender



Brown



Red



Candy Pink



Orange



Sandstone



Gold

**BUS 306**



**BUS 310**



**BUS 312**



**BUS 315**



Sublimated

**BUS 317**



Sublimated

**BUS 320**



**BUS 325**



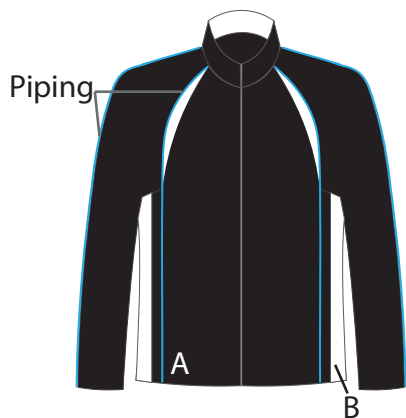
**BUS 328**



Ella wearing BUS 320 with Balance Hotpants

Nic wearing BUS 325 with Hip Hop Shorts

TSJ 160



TSJ 110



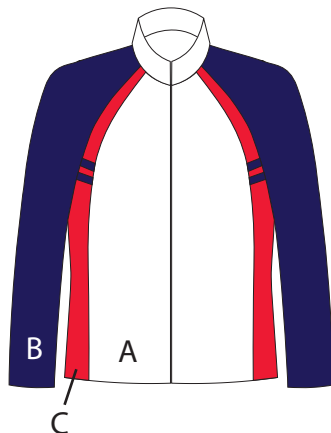
TSJ 117



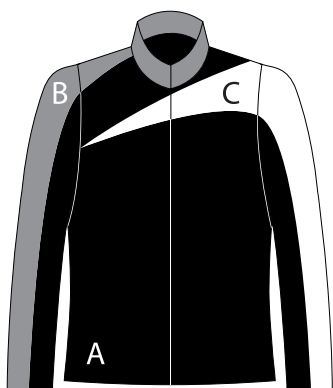
TSJ 304



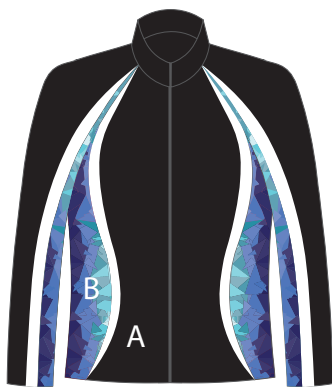
TSJ 310



TSJ 315



TSJ 330

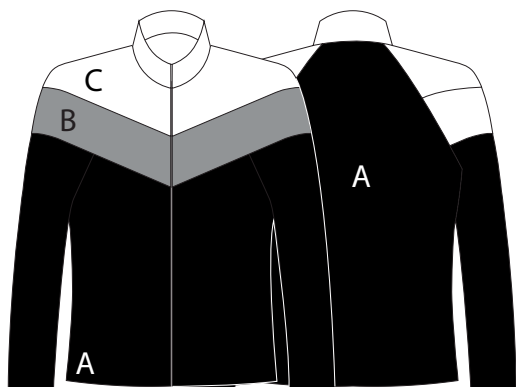


Sublimated



Erin wearing TSJ 110 with TSP100

TSJ 335



Sport Trackie Jacket & Shorts



TSP Slim Leg



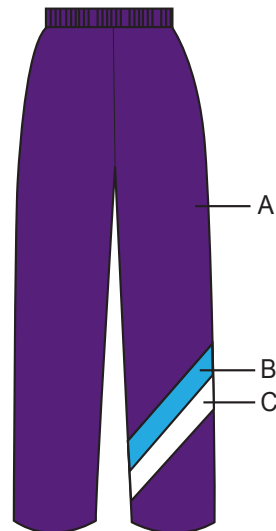
a

TSP 100

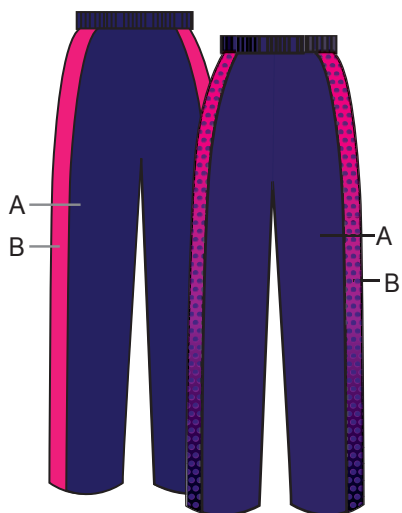


Stripes Optional

TSP 101



TSP 103



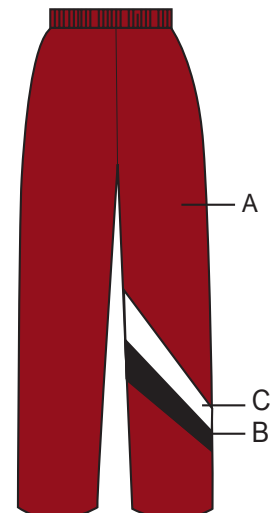
Sublimated

TSP 105

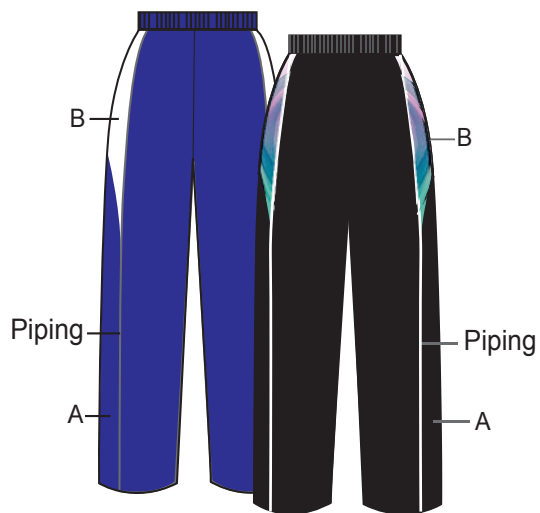


Sublimated

TSP 110

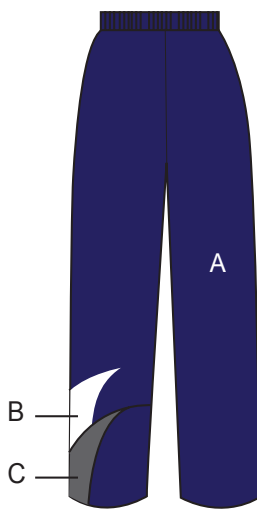


TSP 160



Sublimated

TSP 190



TSP 330



Sublimated

# Customisation

**Step 1** Choose a garment

**Step 2** Choose a fabric

**Step 3** Choose a sublimated design from our **Essentials Catalogue** and/or your Logo

**Step 4** Supply a high-resolution image of your Logo

**Step 5** Place your sample order. Setup fee applies



Slides



Agile Hotpants



Lattice Croptop



Snuggle Boots



Midnight Star

3/4 Piper Leggings



Shooting Star



SNMB Relaxed Fit



Lattice Croptop



Dart Hotpants



Dart Jacket



Storm



Jogger Jacket



Muscle Tank



Lattice Croptop



3/4 Atlantis Leggings

