



PRODUCT CATALOG

CONFIDENCE
FROM THE GROUND UP

YOURCRAWLSPACE.COM



An Encapsulation System You Can Count On

The **Your Crawlspace** encapsulation system uses innovative, patented, and proprietary technology designed by our experienced team to create the only system in the industry that is truly sealed—without the use of mechanical fasteners.

While traditional encapsulation systems create inadequate seals by drilling or shooting nails into your foundation, the **YCS System** offers a permanent, damage-free solution that's safe and simple to install.



NO HOLES REQUIRED



ODOR-FREE GUARANTEED

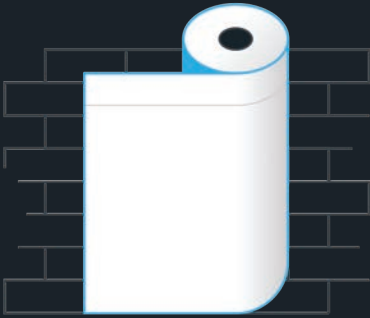


50% SHORTER INSTALLS

TABLE OF CONTENTS

- 1** THE YCS SYSTEM
- 4** WALL & PIER VAPOR BARRIERS
- 12** TAPES & ADHESIVES
- 20** VENT COVERS, VENT FAN & ACCESS DOORS
- 24** FLOOD FLAPS
- 26** DEHUMIDIFIERS & ACCESSORIES
- 35** SUMP PUMPS & ACCESSORIES
- 43** CLEANERS & ACCESSORIES
- 48** DRAINAGE SYSTEMS
- 50** INDEX

How the YCS System Works



The YCS System starts with the patented **YCS Crawl Curtain** and/or **YCS Wall Attachment Tape** that are custom-designed to fit any crawlspace wall and ensure a permanent seal.



The YCS System is installed using the proprietary **YCS Magic Sealant/Adhesive** to create a strong, lasting seal that will adhere to any type of foundation wall, including brick, metal, wood, stone, or block.



The YCS System is then combined with proprietary, puncture-resistant floor liners and tapes to complete the seal, reducing the humidity level in the crawlspace and eliminating moisture buildup.



THE YOUR CRAWLSPACE **Guarantee**

We're so confident in our products and our system that we guarantee all YCS vapor barriers will be free from manufacturing defects, flaws, holes, tears, and odors (known as off-gassing) for 25 years.*

**See website for warranty details.*

— **READY TO GET STARTED?** —

Check out our products to see how you can get confidence from the ground up today.



—

WALL & PIER VAPOR BARRIERS

—

YCS Crawl Curtain

The **YCS Crawl Curtain** is the smartest and easiest way to properly seal foundation walls and piers. The wall and pier curtain liners are pre-rolled* to fit the job, speeding up the install process. The built-in activation strip and the **YCS Magic Adhesive** will permanently seal to virtually any foundation, brick, block, dirty or wet with NO mechanical fasteners. The liner is bright white on the front and blue on the back, so the activation strip is easily identified.

Each roll is individually wrapped to ensure the roll stays clean while transporting through the

crawlspace. Never again worry about damaging a foundation wall with nails and pins. The **YCS Crawl Curtain** is the most efficient way to attach and seal a crawlspace, in half the time.

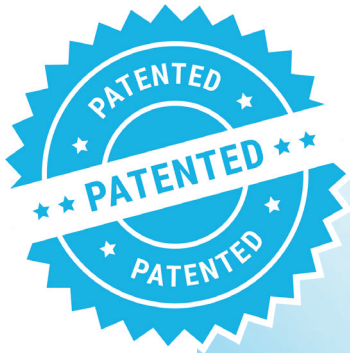
**Pre-rolled for your convenience to protect the liner from dust, dirt, or moisture to ensure better tape seams, all while saving labor time and wasted material.*

Product Color: Blue & White

YCS-2CC-100 (2' x 100')

YCS-3CC-100 (3' x 100')

YCS-4CC-100 (4' x 100')



For higher foundation walls consider using **YCS Wall Attachment Tape**.



YCS 100% Reinforced 8 Mil Vapor Barrier

Since 2006, Your Crawlspace has dealt almost exclusively with 100% woven vapor barriers. The market has gradually followed, but do not be fooled by the competition's products. Our woven products are the results of years of research both in the lab and in the field. Designed to give the contractor the best product at the best price, YCS's line of woven vapor barriers has a product for every application. Backed by our 25-year warranty, YCS products will NEVER produce unwanted odors or smells.

This product is a pre-rolled,* 100% reinforced ground or wall vapor barrier, not 10% reinforced like most liners. Additionally, it will not grow mold. Check out ASTM-1338-00 and ASTM G-21. This product works well with our **YCS Seam Weld, Wall Curtain, Wall Attachment Tape, Seam Tape**, and our **Magic Adhesive**.

This product compares with most 12 mil reinforced vapor barriers, but it's lighter, stronger, and less expensive. The YCS 8 mil reinforced vapor barrier is also available in pre-cut wall sections.

Product Color: Black & White

YCS-9125100VBW (12.5' x 100') (1,250 SF)

YCS-924100VBW (26.6" x 100') (220 SF)

YCS-936100VBW (38" x 100') (316 SF)

YCS-948100VBW (51.5" x 100') (429 SF)

YCS-972100VBW (74" x 100') (616 SF)

Pre-Cut 100% Reinforced 8 Mil Wall/Pier Liners

The **YCS Pre-Cut Wall Liners** are guaranteed to save you time and ensure an easier installation process. These pre-rolled* liners work great with the **YCS Wall Attachment Tape** and are available in both clear and white. They can also be custom-cut to fit any foundation walls or piers.

**Pre-rolled for your convenience to protect the liner from dust, dirt, or moisture to ensure better tape seams, all while saving labor time and wasted material.*

Product Color: Black & White OR Clear

YCS-924100VBW (26.6" x 100') (220 SF) (WHITE/BLACK)

YCS-936100VBW (38" x 100') (316 SF) (WHITE/BLACK)

YCS-948100VBW (51.5" x 100') (429 SF) (WHITE/BLACK)

YCS-972100VBW (74" x 100') (616 SF) (WHITE/BLACK)

YCS-824100VBC (2' x 100') (CLEAR)

YCS-836100VBC (3' x 100') (CLEAR)

YCS-848100VBC (4' x 100') (CLEAR)

YCS-872100VBC (6' x 100') (CLEAR)





YCS 100% Reinforced 14 Mil Vapor Barrier

Since 2006, Your Crawlspace has dealt almost exclusively with 100% woven vapor barriers. The market has gradually followed, but do not be fooled by the competition's products. Our woven products are the results of years of research both in the lab and in the field. Designed to give the contractor the best product at the best price, YCS's line of woven vapor barriers has a product for every application. Backed by our 25-year warranty, YCS products will NEVER produce unwanted odors or smells.

The YCS 14 MIL is a pre-rolled,* 100% reinforced ground or wall vapor barrier, not 10% reinforced

like most liners. Additionally, this product will not grow mold. This product works well with our **YCS Seam Weld, Wall Curtain, Wall Attachment Tape, Seam Tape**, and our **Magic Seam Tape**. Our 14 mil compares with most 20 mil reinforced vapor barriers, but it's lighter, stronger, and less expensive.

Product Color: Grey & White

YCS-1512100VBW (12' x 100') (1,200 SF) (folded to 6')

YCS-156100VBW (6' x 100') (600 SF)

YCS 100% Reinforced 16 Mil Ground Vapor Barrier

Since 2006, Your Crawlspace has dealt almost exclusively with 100% woven vapor barriers. The market has gradually followed, but do not be fooled by the competition's products. Our woven products are the results of years of research both in the lab and in the field. Designed to give the contractor the best product at the best price, YCS's line of woven vapor barriers has a product for every application. Backed by our 25-year warranty, YCS products will NEVER produce unwanted odors or smells.

The YCS 16 mil is a pre-rolled, 100% reinforced ground vapor barrier, not 10% reinforced like most liners. This product will not grow mold. Check out ASTM-1338-00 and ASTM G-21. The YCS 16 mil works well with our **YCS Seam Weld, Wall Curtain, Wall Attachment Tape**, and our **YCS Seam Tapes**. Our 16 mil liner compares to most 20 mil string reinforced vapor barriers, and at almost 53 pounds per 1,000 sq ft, contains more polyethylene than comparable 16 mil products.

Product Color: White

YCS-1612100VBW (12' x 100')





YCS 100% Reinforced 20 Mil Ground Vapor Barrier

Since 2006, Your Crawlspace has dealt almost exclusively with 100% woven vapor barriers. The market has gradually followed, but do not be fooled by the competition's products. Our woven products are the results of years of research both in the lab and in the field. Designed to give the contractor the best product at the best price, YCS's line of woven vapor barriers has a product for every application. Backed by our 25-year warranty, YCS products will NEVER produce unwanted odors or smells.

The YCS 20 mil is a pre-rolled, 100% reinforced ground vapor barrier, not 10% reinforced like most liners. This product will not grow mold. Check out ASTM-1338-00 and ASTM G-20. The YCS 20 mil is designed for the toughest of crawlspace jobs. It works well with our **YCS Seam Weld, Wall Curtain, Wall Attachment Tape, and YCS Seam Tapes**. Rolled to 12' x 75', the 20 mil weighs almost 70 pounds per 1,000 sq ft.

Product Color: White

YCS-231275VBW (12' x 75')

YCS Premium 36 Mil Drain Mat/ Vapor Barrier

If you're looking for the most advanced ground vapor barrier system on the market, here it is. The YCS Premium 36 Mil Drain Mat is custom-designed for crawlspace. By taking a high-tech geo fabric, and coating one side with 100% virgin polyethylene, a contractor is able to gain all of the benefits of a heavy duty felt underlayment, with half of the install time. The padded felt bottom distributes water and soil gasses, and it

is virtually puncture-proof. The high-tech coating on this product has a glossy finish, is very flexible, and has a ZERO perm. The finish also provides excellent adhesion to the **YCS Pro Seam Tape**.

Product Color: Black & White

YCS 36-94-100 (94" x 100') (800 SF)



The image shows two rolls of white adhesive tape on a wooden surface. The rolls are partially unrolled, and the adhesive side is visible. The text 'MADE IN CANADA' is printed on the inner core of the tape. The entire image is overlaid with a semi-transparent blue filter. The title 'TAPES & ADHESIVES' is centered in a white, outlined, sans-serif font, flanked by two horizontal white lines.

TAPES & ADHESIVES

YCS Wall Attachment Tape

The **YCS Wall Attachment Tape** is a unique, patented wall attachment tape unlike any other traditional two-sided foundation wall tapes on the market. One side of the wall attachment has an activation strip that attaches to the foundation wall with our approved **YCS Magic Adhesive***, and the other side is the release adhesive strip that attaches to the vapor barrier. The **YCS Wall Attachment Tape** can be attached to the YCS 8 mil, 14 mil, pre-cut wall liners, and insulation board with NO mechanical fasteners!

**YCS approved Magic Adhesive MUST be used to ensure proper adhesion to the foundation and our vapor barriers. This product is low-VOC, odorless, and non-flammable. Please follow instructions when installing.*

Product Color: White OR Clear

YCS-100WAT (2.75" x 100')





YCS Magic Sealant/ Adhesive

The **YCS Magic Sealant/Adhesive** will attach to virtually any foundation wall and must be used with our **YCS Wall Attachment Tape** and **Wall Curtain**. When combined with the activation strip on our **Wall Curtain** and the **Wall Attachment Tape**, you can be sure you have a permanent attachment and seal.

The product is low-VOC, odorless, non-flammable, and easy to work with. Remember, it will seal to most surfaces permanently, so

put it where it needs to go or clean up quickly with mineral spirits. Remains 25% flexible, low VOC, radon sealant, gap crack penetration for foundation and waterproofing. This product is specifically designed to use with the **YCS Wall Curtain** and **YCS Wall Attachment Tape**.

YCS SA10.10Z (QUANTITY OF 12)

YCS Seam Tape

Available in both 3" and 4", our tapes come with pinked edges for an easier application process. **YCS Seam Tapes** are available in both white and clear, allowing these tapes to be used with any vapor barrier. They do not contain chemical odors like some seam tapes, so you never have to worry about concerns from homeowners. The YCS tapes work well with our liners because we match our liner coatings to the tapes' specific adhesive. We provide the best quality on the market at a competitive price.

Product Color: White OR Clear

YCS-3180-STW (3" x 180') (WHITE)

YCS-4180-STW (4" x 180') (WHITE)

YCS-3180-STC (3" x 180') (CLEAR)

YCS-4180-STC (4" x 180') (CLEAR)





YCS Pro Seam Tape

The **YCS Pro Seam Tape** is similar to our standard **YCS Seam Tape** but is thicker (9 mil) and contains more adhesive. When the job calls for something a little more aggressive, the **YCS Pro Seam Tape** is a contractor favorite. Like all **YCS Seam Tapes**, the **YCS Pro Seam Tape** contains no chemical odors. The **YCS Pro Seam Tape** is designed with the contractor in mind.

Product Color: White

YCS-4180 PROST

YCS Magic Seam Tape

The **YCS Magic Seam Tape** is designed to be used when the job calls for the most aggressive seam tape on the market, suitable even for wet environments. The **YCS Magic Seam Tape** combines the technology of our Seam Weld and our **YCS Pro Seam Tape** to create the most innovative seam tape on the market. The **YCS Magic Seam Tape** is available in both 110' and 275' lengths and can be applied to set liner.

YCS-3110Pro-STW (3" x 110')

YCS-3275Pro-STW (3" x 275')





YCS Seam Weld

(PROPRIETARY)

The **YCS Seam Weld** is the best seaming product for our ground vapor barriers* or any surface needing a permanent seal. You can use this product to attach foam board to our vapor barriers, which prevents the need for mechanical attachments. Our seam weld is easy to use, odorless, and replaces the need for hot welds. Almost 15 mils of proprietary adhesive!

**This product should not be used with our felt backed 36 mil Vapor Barrier, nor is it a good solution for block or brick. Please refer to the YCS Wall Attachment Tape system when attaching vapor barriers to the foundation wall.*

YCS-15125SW (1.5" x 125')

10oz Cordless Cartridge Gun 12 Volt

Kit includes cordless cartridge gun for dispensing 10oz / 300ml cartridges, a fast

30-minute charger(p/n 1004-4), and 12V Lithium-Ion battery (p/n 1004-3). Some assembly required.

FEATURES:

- 400 lbs. force dispensing power
- 12-volt Lithium-Ion battery
- Dispense up to 100 cartridges on a single charge
- Variable Speed Trigger with max. speed dial for total control
- Auto reverse for no-drip
- 30% lighter than comparable 18V models
- Dispense a 10oz cartridge in as little as 16 seconds
- Incorporates cartridge puncture wire, ladder hook, comfortable over-molded handle, and swivel composite carriage

YCS-CAULKGUN-10





VENT COVERS,
VENT FAN &
ACCESS DOORS

YCS Flex Foam Vent Cover (Box of 12)

The **YCS Flex Foam Vent Cover** is designed to make sealing crawlspace vents quick and easy. No more cutting rigid foam board on the job, leaving a mess in the customer's yard. Our **YCS Flex Foam Vent** covers friction fit into most standard 8" x 16" openings and can be easily trimmed. Once the cover is in place, simply apply a small bead of the **YCS Magic Adhesive** around the edges to seal.

YCS-0816FVC (8" x 16")



YCS Foundation Hard Vent Cover (Box of 10)

This product is a surface-mounted **YCS Foundation Hard Vent Cover** with flex foam core. Designed for exterior use, it mounts easily with **YCS Magic Adhesive**. Fits standard 8" x 16" openings.

YCS-1018HFVC (10" x 18")

YCS Vent Fan

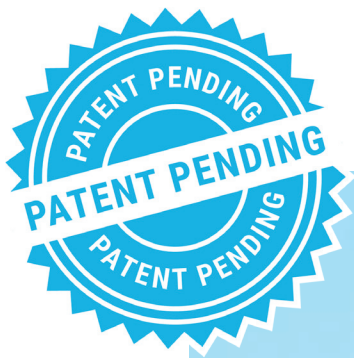
The YCS Vent Fan is code approved for continuous exhaust ventilation for unvented crawlspaces at a rate equal to 1 cubic foot per minute. The product is designed to meet the ICC residential code. Adjustable settings to the square footage of homes.

FEATURES:

- Extends the life of a dehumidifier
- Fits in 8" x 16" vents
- Can be trimmed for smaller holes
- Powered by 110 volt industrial plug

Product Color: Black

YCS-VFAN-1018



YCS Crawlspace Door

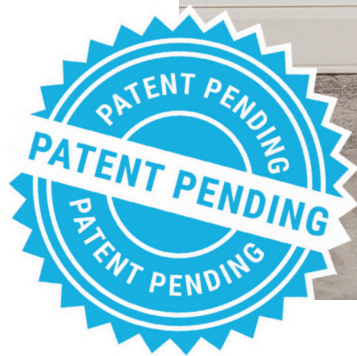
The **YCS Crawlspace Access Door** is made from 100% PVC and operates on an innovative slot and lock system (no hinges). We have added a handle, separate door frame, and a lockable barrel bolt latch, which allows for easy access. The **YCS Crawlspace Door** is a flush mount and only needs to be screwed into the foundation wall and sealed with a bead of **YCS Magic Adhesive**. Doors are designed to fit openings, look good, and save time from fabricating.

YCS-CSD1232 (13" x 33")

YCS-CSD1632 (17" x 33")

YCS-CSD2432 (25" x 33")

YCS-CSD2436 (25" x 37")



Crawl Haul

Our Crawl Haul is a rugged, low-profile, heavy-gauge aluminum sled with wheels.

Designed to easily carry in or out materials, rock, or dehumidifiers, it's dependable and durable to help you get the job done. A true workhorse!

Interior: 16.25"W x 56"L x 7"H

YCS-1656-CH



FLOOD FLAPS

Flood Flaps

All Flood Flaps® models in this series are assured to keep air and moisture out of a conditioned crawlspace or garage, while still providing efficient flood relief when necessary.

FFWF12TF Model: The Flood Flaps® FFWF12TF series of flood protection vents are perfect for a block wall and brick skirt application.

Suggested Application: Block with Brick Skirt Enclosed Area: 220 sq ft Rough Opening: 16" x 8" Exterior Dimensions: 15 5/8" x 7 3/4" x 12"D Flood Flaps®

FFWF08TF Model: The Flood Flaps® FFWF08TF flood vent is perfect for a block wall and stucco application.

Suggested Application: Block with Stucco Enclosed Area: 220 sq ft Rough Opening: 16" x 8" Exterior Dimensions: 15 5/8" x 7 3/4" x 8"D Flood Flaps®

FFWF05TF Model: The Flood Flaps® FFWF05TF flood vent series is perfect for stud wall application.

Suggested Application: Block or Wood Stud Wall Enclosed Area: 220 sq ft Rough Opening: 16" x 8" Exterior Dimensions: 15 5/8" x 7 3/4" x 5"D

**FLOOD FLAPS SEALED SERIES FLOOD VENTS
FEMA/ICC APPROVED Flood Flaps®**

YCS-FFWF12TF

YCS-FFWF08TF

YCS-FFWF05TF



A photograph of a white Aprilaire dehumidifier with its front door open. The digital display on the control panel shows '55' with '% RH' and 'SETTING' next to it, and 'ON' below. The brand name 'Aprilaire' is visible on the top left of the unit. The entire image has a blue tint and a white border.

DEHUMIDIFIERS & ACCESSORIES



Aprilaire Model 1820 Dehumidifier

The **Aprilaire Model 1820 Dehumidifier** is designed to dehumidify the air coming into the unit by passing the incoming air over an evaporator coil to drop the temperature below the dew point of the air. Moisture is removed from the air and drained out of the unit to a common floor or waste drain. The air is then reheated in the condenser coil and exits the unit. Dehumidification occurs until the set point is reached, then shuts off until periodic sampling determines a need for operation.

SPECIFICATIONS:

- Rated at 70ppd
- Designed to cover up to 2200 sq. ft.
- ENERGY STAR® rated
- Five-year warranty

Application: The **Aprilaire Model 1820 Dehumidifier** is the perfect solution for controlling humidity in crawlspaces, protecting against structural damage, pests, and mold.

Circulation: The **Model 1820** can also be programmed to circulate the air within a crawlspace. Circulating the air evens out relative humidity levels and temperature in the space, eliminating variations in the environment.

YCS-AA-1820

Aprilaire Model 1830 Dehumidifier

The **Aprilaire Model 1830 Dehumidifier** is a high-capacity solution that helps you achieve total comfort through humidity control. It is installed as part of your home's heating and cooling system by a local HVAC professional. The 1830 pulls air from every room in your home through the return ducts. Then, it removes the moisture and sends dry air back throughout your home. It works in conjunction with your air conditioner to efficiently balance the humidity levels in your home, but can also work independently on days when you don't need the air conditioner.

SPECIFICATIONS:

- Has the capacity to remove up to 70 pints of moisture per day (8 3/4 gallons)
- Provides dehumidification for homes up to 5,000 square feet

- Comes with a 5-year warranty
- Made in USA
- Placed in the basement, crawlspace, or any room; not installed to HVAC system
- Rigorous reliability and durability testing, assuring high-quality performance
- Automatic humidity sensing for efficient and effective removal of excess humidity
- Includes a built-in, easy-to-use control
- Performs quietly installed away from your living space
- Low maintenance: No messy trays to empty; simple once a year filter cleaning or replacement (part number 5443)

YCS-AA-1830





Aprilaire Model 1850 Dehumidifier

The **Aprilaire Model 1850/1850D Dehumidifier** is a high-capacity solution that helps you achieve total comfort through humidity control. It is installed as part of your home's heating and cooling system by a local HVAC professional.* The 1850/1850D pulls air from every room in your home through the return ducts. Then, it removes the moisture and sends dry air back throughout your home. It works in conjunction with your air conditioner to efficiently balance the humidity levels in your home, but can also work independently on days when you don't need the air conditioner.

SPECIFICATIONS

- Removes up to 95 pints (11 7/8 gallons) of moisture per day!
- Provides dehumidification for homes up to 5,200 sq. ft.

- Comes with a 5-year warranty
- Made in USA
- Placed in the basement, crawlspace, or condominium/townhome utility closet
- Rigorous reliability and durability testing, assuring high-quality performance
- Uses automatic humidity sensing for efficient and effective removal of excess humidity in your home
- Includes a built-in, easy-to-use control
- Performs quietly installed away from your living space
- Low-maintenance: No messy trays to empty; simple once a year filter cleaning or replacement (part number 5443)

YCS-AA-1850

Aprilaire Model 1870 Dehumidifier

The Aprilaire Model 1870 Dehumidifier is a whole-home dehumidifier designed for ducted applications. This model is a high-capacity freestanding solution that helps you achieve total comfort through humidity control.

SPECIFICATIONS:

- Capacity: Removes up to 130 pints of moisture per day
- Installed as part of your home's HVAC system
- ENERGY STAR® certified product
- Comes with a 5-year warranty
- Made in USA
- Rigorous reliability and durability testing, assuring high-quality performance
- Low maintenance: No messy trays to empty; simple once-a-year filter cleaning or replacement
- Control Options: Includes an easy-to-use digital LCD control and can also be installed with optional wall-mount controls
- Uses automatic humidity sensing for efficient and effective removal of excess humidity in your home
- E-coated coil protects refrigeration system from corrosion
- Whisper-quiet performance

YCS-AA-1870





Aprilaire Model 76

The **Aprilaire Model 76 Digital Dehumidifier Control** communicates with your dehumidifier, allowing you to control the operation of the unit from a distance. Using an onboard sensor, the **Model 76 Dehumidifier Control** monitors the relative humidity in the space in which it is located and displays the measured relative humidity on the digital display. This is a wired control unit that must be hardwired to your dehumidifier.

The Model 76 digital control can also be used as a communicating remote control for your dehumidifier, allowing you to set the relative humidity level for your home and control your Aprilaire Dehumidifier from a convenient living space location. This makes it easy for you to control your Aprilaire Dehumidifier if it is located in an inconvenient or hard-to-access area.

YCS-AA-76

Aprilaire Model 8620W Thermostat

The Genuine Aprilaire Programmable Wifi Thermostat offers remote monitor and control capabilities with the Aprilaire Wifi Thermostat App on IOS and Android. Features include large 10.3 square-inch LCD touch-screen display, Event-Based™ Air Cleaning, and Humidity or Ventilation Control.

YCS-AA-8620W



Aprilaire Dehumidifier Hanging Kit

Get this convenient hanging kit for your Aprilaire Dehumidifier Models 1820, 1830, and 1850 to help gravity feed the condensate line.

YSC-AA5822

Dehumidifier Risers

Dehumidifier Risers are used to level the unit, and help gravity feed the moisture draining through the condensate line.

Measurements: Adjustable to 3", 5" or 8" inch

YCS-AA5879



Aprilaire 1820 Dehumidifier Air Filter

Aprilaire 5695 Dehumidifier Filter is mesh metal and washable foam filter, with MERV 8 rating. Annual cleaning or replacement required to maintain peak performance.

Measurements: 8" x 11.75" x 1"

YCS-AA5695

Aprilaire 1830/1850 Dehumidifier Air Filter

AprilAire 5443 Dehumidifier Filter is mesh metal and washable foam filter, with MERV 8 rating. Annual cleaning or replacement required to maintain peak performance.

Measurements: 10" x 12" x 1"

YCS-AA5443





Baldr Indoor/Outdoor Thermo-Hygrometer With Backlight

FEATURES:

- Big Indoor / Outdoor Temperature & Humidity Display
- Max / Min. Records Within 24 Hours
- Indoor Range (14-122 Degrees Fahrenheit)
- Outdoor Range (-4-140 Degrees Fahrenheit)
- Arrow Trends For Temperature & Humidity
- Wall Hanging, Table Standing Or Magnet Attaching
- Motion-Activated Backlight Function
- Comfort Level Indicator
- Color: White
- Power Supply:
 - Main Unit: 2 X Aaa Batteries (Not Included)
 - Sensor: 2 X Aa Batteries (Not Included)

YCS-HYGR0123



SUMP PUMPS & ACCESSORIES

Liberty Pump 237

FEATURES:

- Vortex-style impeller permits passage of solids without clogging
- Made of high-temp engineered thermoplastic
- Polypropylene and powder coated aluminum construction
- Stainless steel rotor shaft; all fasteners are non-corrosive stainless steel
- Oil-filled, hermetically sealed motors with thermal overload protection
- Permanently lubricated upper and lower bearings
- Quick-disconnect 10' standard power cord allows replacement of cord in seconds without breaking seals to motor
- 25' length optional: For 25' cord option, add a "-2" suffix to model number (Example: 231-2 for Model 231 with 25' cord)
- Removable base allows suction down to 1/8"

DIMENSIONAL DATA:

- Weight: 11 LBS.
- Height: 10.5"
- Major Width: 9.6"
- Minimum Sump Diameter: 14" (10" on Model 237)

YCS-LP237





Liberty Pump 457

FEATURES:

- Vortex-style impeller permits passage of solids without clogging
- Made of high temp engineered thermoplastic
- Polypropylene and powder coated aluminum construction
- Stainless steel rotor shaft; all fasteners made of non-corrosive stainless steel
- Oil-filled, hermetically sealed motors with thermal overload protection
- Permanently lubricated upper and lower bearings
- Quick-disconnect 10' standard power cord allows replacement of cord in seconds without breaking seals to motor
- 25' length optional: For 25' cord option, add a

"-2" suffix to model number (Example: 451-2 for Model 451 with 25' cord)

- Removable base allows suction down to 1/8"
- 3-year limited warranty

DIMENSIONAL DATA:

- Weight: 12.5 LBS.
- Height: 12.5"
- Major Width: 9.6"
- Minimum Sump Diameter: 14" (10" on Model 457)

YCS-457

Liberty Sump Pump Kit

FEATURES:

- Heavy-duty submersible sump pump in 1/3 or 1/2 hp
- 16.5" x 15" perforated polyethylene sump pit with cover
- 24' x 1-1/4" flexible hose kit, polyethylene (available without hose)
- System is unassembled
- Check valve

KIT CONTAINS:

- 16.5" x 15" poly sump pit (perforated) and poly cover
- Automatic sump pump, 115 V, with 10' power cord
- 24' flexible hose kit, polyethylene 1-1/4"(Available without hose)
- Check valve threads directly into pump discharge
- System is unassembled

YCS-CSSPK

YCS-CSP-237NH



Liberty Model 441

Battery-operated 12 Volt DC Liberty Model 441 takes over when the power goes out. Operating from the power of a 12-volt deep cycle battery*, the 441 features an efficient 12 volt pump, advanced 3-stage charger with switch mode technology, and easy wiring with slip connectors. The 441 is designed as a backup pump and designed to be used with a 120V primary pump.

**Battery not included.*

YCS-441



Liberty Model PC237-441 Sump Pump Combo

Battery-operated 12 Volt DC Liberty Model 441 takes over when the power goes out. Operating from the power of a 12-volt deep cycle battery*, the 441 features an efficient 12 volt pump, advanced 3-stage charger with switch mode technology and easy wiring with slip connectors. Available in 1/3 or 1/2 hp.

**Battery not included.*

YCS-PC237-441

Liberty Condensate Pump

The Liberty LCU-Series Condensate Pumps are built for power and efficiency, used in places like high-efficiency furnaces, ice machines, drinking fountains, and more.

FEATURES INCLUDE:

- High impact ABS tank
- Wall mounts
- Three intake holes
- 3/8" O.D. outlet
- Barbed and threaded discharge connection
- Removable check valve
- Stainless steel shaft
- 6' power cord with ground
- Thermally protected
- Fully automatic
- Quiet operation
- Models with an "S" include built-in safety switch
- Isolation pads pre-installed on tank
- Maximum fluid temperature for LCU models: 150° F
- Models with a "T" include 20' of tubing

YCS-CP-15ST



Liberty Sump Pump Accessories: “The Brick” Model

FEATURES:

- Fits Liberty submersible model sump pumps
- Reduces potential jamming from debris, mud, and rocks
- Durable ABS material
- Includes strong adhesive tape to attach pump for easy installation
- Raises pump 2.5”
- Maximum fluid temperature 140° F
- Not designed for use with solvents or chemicals
- For case quantities (12) order 44450C0

YCS-LPBRK





Liberty Sump Pump Basin

This high-quality product is a perforated polyethylene sump pit with cover.

Size: 16.5"x15"

YCS-SPB

Liberty Puddle Sensor Puck

The Liberty Puddle Sensor Puck contains an alarm and puck for floor-level water sensing. 50' cord.

ALARM FEATURES:

- 115v operation with 9 volt battery back-up
- 86-decibel horn
- red LED Alarm Ring
- automatic alarm reset
- test silence/buttons
- 9-volt battery included=

YCS-ALMPK



CLEANERS & ACCESSORIES



YCS Cleaner

The YCS Cleaner Multi-Stain Remover is designed to be tough on stains and easy on the Earth. This biodegradable product contains no bleach or acid, making it safer for your home and for the environment.

Use the YCS Cleaner to restore and revitalize weathered outdoor surfaces. The product reacts with sun-damaged surface fibers and organic stains to quickly eliminate them, requiring little to no scrubbing and providing a continuous clean long after use. It leaves no toxic residue and is safe on most surfaces, including:

- Crawlspace
- Decks
- Concrete
- Docks
- Fiberglass
- Attics
- Block

- Brick
- Drywall
- and More!

Made In the U.S.A. NOT A MARINE POLLUTANT.

Hazard Statements: Causes severe skin burns and eye damage. Keep SDS for all applications/work sites.

Precautionary Prevention: Do not breathe mist or vapors. Wear eye/face protection.

Response: If in eyes, rinse cautiously with water for several minutes. Remove contact lenses, if present and easy to do. Continue rinsing. Immediately call Poison Control Center.

Storage: Store away from incompatible materials.

Disposal: Dispose of contents/container in accordance with local/regional/national/international regulations.

YCS-CLEANER-01





YCS Pro Cleaner

The YCS Pro Cleaner is specially formulated for restoration and remediation professionals who need results fast. This cleaner quickly removes dirt and debris as well as stains from mold, mildew, algae, blood, protein, and urine. This earth-friendly product also restores and vitalizes surfaces damaged by sunlight, fire, mold, and other stain-causing materials.

How does it work? YCS Pro Cleaner reacts with organic matter, encapsulating stains into profuse foam for easy removal with HEPA vacuuming, without scrubbing! Plus, YCS Pro Cleaner continues brightening long after use. If you need to be tough on stains but gentle on the environment, this product is for you!

YCS-PRO-01

Benefect Botanical Decon 30

Benefect Botanical Decon 30 is a new, innovative, one-step disinfectant cleaner specially formulated for the majority of water damage restoration jobs. Typical disinfectants require 10 minutes contact time, which is difficult to achieve on vertical surfaces and materials. New Decon 30 solves this problem by being specially formulated to kill gram-negative and gram-positive bacteria with a more realistic contact time of just 30 seconds!

Decon 30 combines powerful botanical cleaning surfactants with the proven killing ability of Benefect's Active Ingredient to clean and disinfect in one easy step. This makes Decon 30 ideally suited for general decontamination

of remediation sites, equipment, and contents. It is ideal for decontamination, preventing cross-contamination, cleaning, disinfecting and deodorizing in water damage applications.

OTHER FEATURES INCLUDE:

- Light Scent
- Economical price
- Kills over 99.99% of bacteria in 30 seconds!
- Pleasant aromatherapeutic vapors
- No synthetic fragrances, dyes, or bleach
- Uses the same Botanical Active Ingredient Benefect is known for, Thymol, formulated using essential plant oils - not chemicals!

YCS-BENEFECT-01



Boss Pro 320 2.5 Gallon Sprayer

The Boss PRO 320 2.5 Gallon Sprayer offers a hydrogen peroxide interior-exterior liquid and foam backpack sprayer complete with 18-volt battery, 120V Fast Charger, Telescoping Extension Wand, and 4 brass output tips.

YCS-PRO-320HP



Boss Pro 512 4 Gallon Sprayer

Boss PRO 512 4 Gallon Sprayer offers a hydrogen peroxide interior-exterior liquid and foam backpack sprayer complete with 18-volt battery, 120V Fast Charger, Telescoping Extension Wand, and 4 brass output tips.


YCS-PRO-512HP

50-Foot Hydrogen Peroxide Liquid Extension Hose

This product is a 50-Foot Hydrogen Peroxide Liquid Extension Hose featuring 1/4 clockwise brass fittings.

YCS-NEH-50HP



A blue-tinted photograph showing a drainage grate and its components. The grate is a square with a grid pattern, and it is surrounded by several rectangular components, likely part of the drainage system. The background is a textured surface, possibly a concrete or stone floor. The text "DRAINAGE SYSTEMS" is centered in the image in a white, outlined font, flanked by two horizontal lines.

DRAINAGE SYSTEMS

YCS “Strip” Drain

YCS “Strip” Drain is a 3-dimensional, high-flow, drainage core which is wrapped with a non-woven filter fabric. It is designed to retain soil particles while allowing water to pass through the drain core for easy removal of water. Effective alternative to french drain pipe & stone systems. Less time to install. Works with our Premium 36 Mil Drain Mat and Liberty Sump Pump Kits.

Roll Width: 6” Roll Length: 150’

YCS-6-SITEDRAIN



6” Splice Connector, 6” End Outlet & 6” T Connector

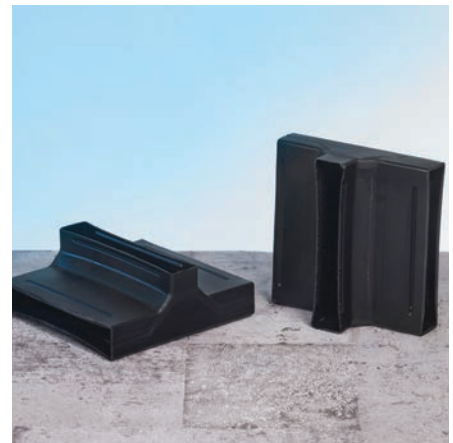
Sold separately:

- 6” Drain Splice Connector. Fits 1”x 6” site drain
- 6” Drain End Outlet. Fits 1”x 6” site drain
- 6” Drain T Connector. Fits 1”x 6” site drain

YCS-SPLICE

YCS-6-ENDOUTLET

YCS-6-TEE



INDEX

Wall & Pier Vapor Barriers

YCS CRAWL CURTAIN

YCS-2CC-100 (2'x100')
YCS-3CC-100 (3'x100')
YCS-4CC-100 (4'x100')

YCS 100% REINFORCED 8 MIL VAPOR BARRIER

YCS-9125100VBW (12.5'x100') (1,250 SF)
YCS-924100VBW (26.6" x 100') (220 SF)
YCS-936100VBW (38" x 100') (316 SF)
YCS-948100VBW (51.5" x 100') (429 SF)
YCS-972100VBW (74" x 100') (616 SF)

PRE-CUT 100% REINFORCED 8 MIL WALL/PIER LINERS

YCS-924100VBW (26.6" x 100') (220 SF) (WHITE/BLACK)
YCS-936100VBW (38" x 100') (316 SF) (WHITE/BLACK)
YCS-948100VBW (51.5" x 100') (429 SF) (WHITE/BLACK)
YCS-972100VBW (74" x 100') (616 SF) (WHITE/BLACK)
YCS-824100VBC (2' x 100') (CLEAR)
YCS-836100VBC (3' x 100') (CLEAR)
YCS-848100VBC (4' x 100') (CLEAR)
YCS-872100VBC (6' x 100') (CLEAR)

YCS 100% REINFORCED 14 MIL VAPOR BARRIER

YCS-1512100VBW (12' x 100') (1,200 SF) (folded to 6')
YCS-156100VBW (6' x 100') (600 SF)

YCS 100% REINFORCED 16 MIL GROUND VAPOR BARRIER

YCS-1612100VBW (12' x 100')

YCS 100% REINFORCED 20 MIL GROUND VAPOR BARRIER

YCS-231275VBW (12' x 75')

YCS PREMIUM 36 MIL DRAIN MAT/VAPOR BARRIER

YCS 36-94-100 (94" x 100') (800 SF)

Tapes & Adhesives

YCS WALL ATTACHMENT TAPE

YCS-100WAT (2.75" x 100')

YCS MAGIC SEALANT/ADHESIVE

YCS SA10.10Z (QUANTITY OF 12)

YCS SEAM TAPE

YCS-3180-STW (3" x 180') (WHITE)
YCS-4180-STW (4" x 180') (WHITE)
YCS-3180-STC (3" x 180') (CLEAR)
YCS-4180-STC (4" x 180') (CLEAR)

YCS PRO SEAM TAPE

YCS-4180 PROST

YCS MAGIC SEAM TAPE

YCS-3110Pro-STW (3" x 110")
YCS-3275Pro-STW (3" x 275')

YCS SEAM WELD

YCS-15125SW (1.5" x 125')

100Z CORDLESS CARTRIDGE GUN 12 VOLT

YCS-CAULKGUN-10

Vent Covers, Vent Fan & Access Doors

YCS FLEX FOAM VENT COVER (BOX OF 12)

YCS-0816FVC (8" x 16")

YCS FOUNDATION HARD VENT COVER (BOX OF 10)

YCS-1018HFVC (10" x 18")

YCS VENT FAN

YCS-VFAN-1018

YCS CRAWLSPACE DOOR

YCS-CSD1232 (13" x 33")
YCS-CSD1632 (17" x 33")
YCS-CSD2432 (25" x 33")
YCS-CSD2436 (25" x 37")

CRAWL HAUL

YCS-1656-CH

Flood Flaps

FLOOD FLAPS

YCS-FFWF12TF
YCS-FFWF08TF
YCS-FFWF05TF

Dehumidifiers & Accessories

APRILAIRE MODEL 1820 DEHUMIDIFIER

YCS-AA-1820

APRILAIRE MODEL 1830 DEHUMIDIFIER

YCS-AA-1830

APRILAIRE MODEL 1850 DEHUMIDIFIER

YCS-AA-1850

APRILAIRE MODEL 1870 DEHUMIDIFIER

YCS-AA-1870

APRILAIRE MODEL 76

YCS-AA-76

APRILAIRE MODEL 8620W THERMOSTAT

YCS-AA-8620W

APRILAIRE DEHUMIDIFIER HANGING KIT

YCS-AA5822

DEHUMIDIFIER RISERS

YCS-AA5879

APRILAIRE 1820 DEHUMIDIFIER AIR FILTER

YCS-AA5695

APRILAIRE 1830/1850 DEHUMIDIFIER

YCS-AA5443

AIR FILTER

YCS-AA5443

BALDR INDOOR/OUTDOOR THERMO-HYGROMETER WITH BACKLIGHT

YCS-HYGR0123

Sump Pumps & Accessories

LIBERTY PUMPS 230-SERIES

YCS-LP237

LIBERTY PUMPS 450-SERIES

YCS-457

LIBERTY SUMP PUMPS CSP SERIES: CRAWLSPACE SUMP KIT

YCS-CSSPK

LIBERTY MODEL 441

YCS-441

LIBERTY MODEL PC237-441 SUMP PUMP COMBO

YCS-PC237-441

LIBERTY CONDENSATE PUMP

YCS-CP-15ST

LIBERTY SUMP PUMP ACCESSORIES: "THE BRICK" MODEL

YCS-LPBRK

LIBERTY SUMP PUMP BASIN

YCS-SPB

LIBERTY PUDDLE SENSOR PUCK

YCS-ALMPK

Cleaners & Accessories

YCS CLEANER

YCS-CLEANER-01

YCS PRO CLEANER

YCS-PRO-01

BENEFECT BOTANICAL DECON 30

YCS-BENEFECT-01

BOSS PRO 320 2.5 GALLON SPRAYER

YCS-PRO-320HP

BOSS PRO 512 4 GALLON SPRAYER

YCS-PRO-512HP

50-FOOT HYDROGEN PEROXIDE LIQUID EXTENSION HOSE

YCS-NEH-50HP

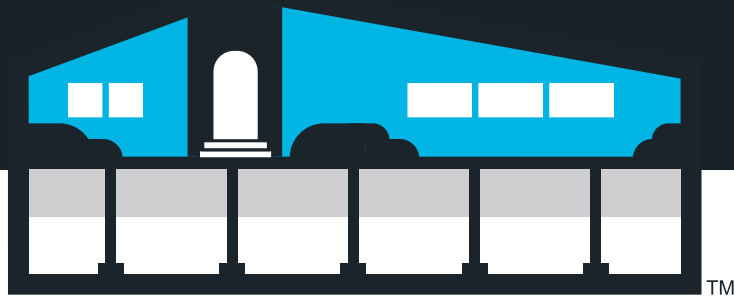
Drainage Systems

YCS "STRIP" DRAIN

YCS-6-SITEDRAIN

6" SPLICE CONNECTOR, 6" END OUTLET & 6" T CONNECTOR

YCS-SPLICE
YCS-6-ENDOUTLET
YCS-6-TEE



Like what you see?

Give us a call at **(843) 887-3247** today to talk to our experienced team members, or check out our website for how-to videos, reviews, and more information on the YCS System.

YOURCRAWLSPACE.COM