

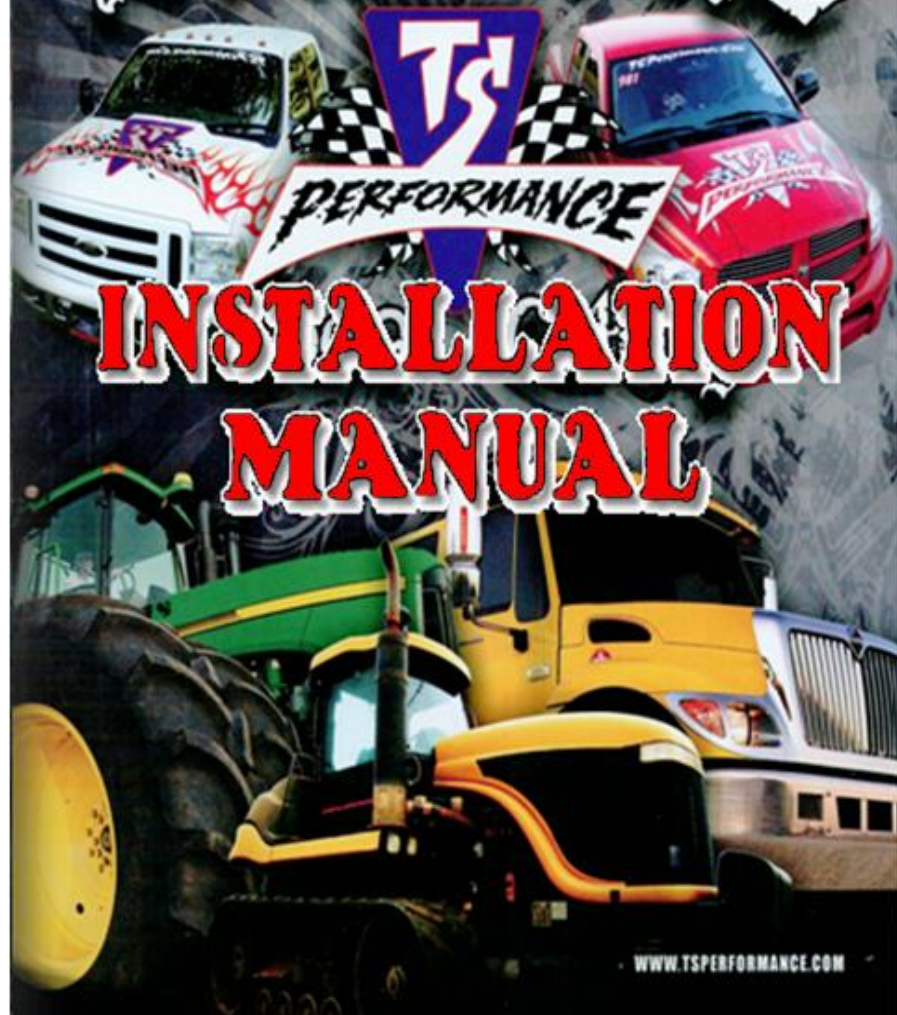


5425 Nashville Road, Bowling Green, KY 42101

p 270-746-9999 f 270-746-9170

[www.tsperformance.com](http://www.tsperformance.com)

# WE ARE DIESEL



[WWW.TSPERFORMANCE.COM](http://WWW.TSPERFORMANCE.COM)



TABLE OF CONTENTS

Contents .....PG.2  
 Installation.....PG.3-6  
 Troubleshooting.....PG.7  
 Updates.....PG.8

Part # 8210301

DDECIII & DDECIV



TS Performance looks forward to serving the technical needs you may run into, however, please review all instructions outlined here and go over all troubleshooting and updates before contacting TS Performance at 270-746-9999. The MPHD power module has been tested under the most harsh conditions utilizing state of the art technology to deliver maximum performance and reliability.

**LIMITED LIFETIME WARRANTY**  
**STATEMENT POLICY**

- The warranty policy is the best warranty within the high performance diesel industry.
- All **TS Performance** products have been inspected, tested and trial in the factory laboratories and on the field.
- Nothing in this Statement of Policy shall alter or enlarge the terms of warranties, obligation or liabilities of these products.
- TS Performance** is not responsible or liable for any products damaged or destroyed due to improper installation.

**TERMS OF WARRANTY**

- The defective product must be freight prepaid and returned to **TS Performance** for further investigation, otherwise this warranty shall be deemed null and voided and of no effect.
- This warranty is void on any products that show evidence of misapplication, negligence, improper installation, and abuse, lack of proper maintenance or alternation from its original design.
- In no event will **TS Performance** be liable for any consequential or incidental damages for breech of any express or implied warranty on the product.
- This warranty is not transferable or assignable.
- TS Performance** is not responsible or liable for any products damaged or destroyed due to improper installation.

**IN THE EVENT THAT THE BUYER DOES NOT AGREE WITH THIS AGREEMENT: THE BUYER MAY PROMPTLY RETURN THIS PRODUCT IN A NEW ANDN UNUSED CONDITION WITH A DATED PROOF OF PURCHASE TO THE PLACE OF PURCHASE WITHIN TEN (10) DAYS FROM DATE OF PURCHASE FOR A FULL REFUND. THE INSTALLATION OF THIS PRODUCT INDICATES THAT THE BUYER HAS READ AND UNDERSTATNDNS THIS AGREEMENT AND ACCEPTST ITS TERMS AND CONDITONS**

25 Nashville Road, Bowling Green, TN 38801  
 P 270-746-9999 F 270-746-9170  
 www.tsperformance.com



TS Performance  
5425 Nashville Rd  
Bowling Green, KY 42101  
270-746-9999

[www.TSPerformance.com](http://www.TSPerformance.com)

### **DISCLAIMER**

#### **READ CAREFULLY BEFORE INSTALLING ANY TS PERFORMANCE PRODUCT**

**REMEMBER THIS IS A HIGH PERFORMANCE PRODUCT. USE AT YOUR OWN RISK. FOR OFF ROAD USE ONLY.**

**Do not use this product until you have carefully read the following agreement.** This agreement sets forth the terms and conditions for the use of the TS Performance product. The installation of this product indicates that the buyer has read and fully understands this agreement and accepts its terms and conditions.

#### **DISCLAIMER OF LIABILITY**

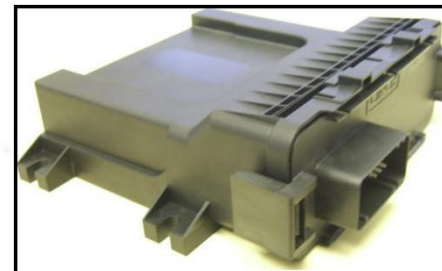
TS Performance, its distributors or dealers shall in no way be responsible for the product's proper use and service. The buyer of this system hereby waives all liability claims. The buyer acknowledges that he is not relying on the seller's skill or judgment to select or furnish goods suitable for any particular purpose and that there are no liabilities which extend beyond the description on the face hereof, and the buyer hereby waives all remedies or liabilities, expressed or implied arising by law or otherwise, (including without obligations of the seller with respect fitness, merchantability and consequential damages) or whether or not occasioned by the seller's negligence.

The seller disclaims any warranty and expressly disclaims any liability for personal injury or damages. The buyer acknowledges and agrees that the disclaimer of any liability for personal injury is a material term for this agreement and the buyer agrees to indemnify the seller and to hold the seller harmless from any claim related to the item of the equipment purchased. Under no circumstances will the seller be liable for any damages or expenses by reason of use or sales of any such equipment.

The seller assumes no liability regarding the improper installation or misapplication of its products. It is the installer's responsibility to check for proper installation and if in doubt the manufacturer is to be contacted.

Bowling Green, KY 42101  
999 f 270-746-9170  
[www.tsperformance.com](http://www.tsperformance.com)

### **Contents**

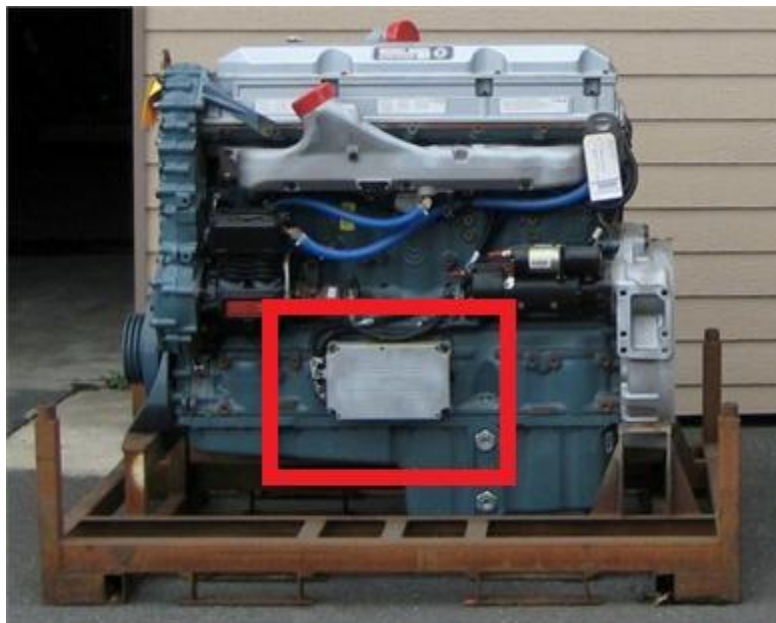


MPHD Module



DDECIII & DDECIV Harness

**\*\*If engine still performs poorly, confirm that all wiring connections are secure and contact TS Performance at (270) 746 – 9999.\*\***



The TS Performance MPHD plugs directly into the Detroit ECM mounted on the lower driver's side of the engine.

The MPHD monitors each injector and enhances the fuel economy and horsepower by optimizing the duration of fuel to each injector.

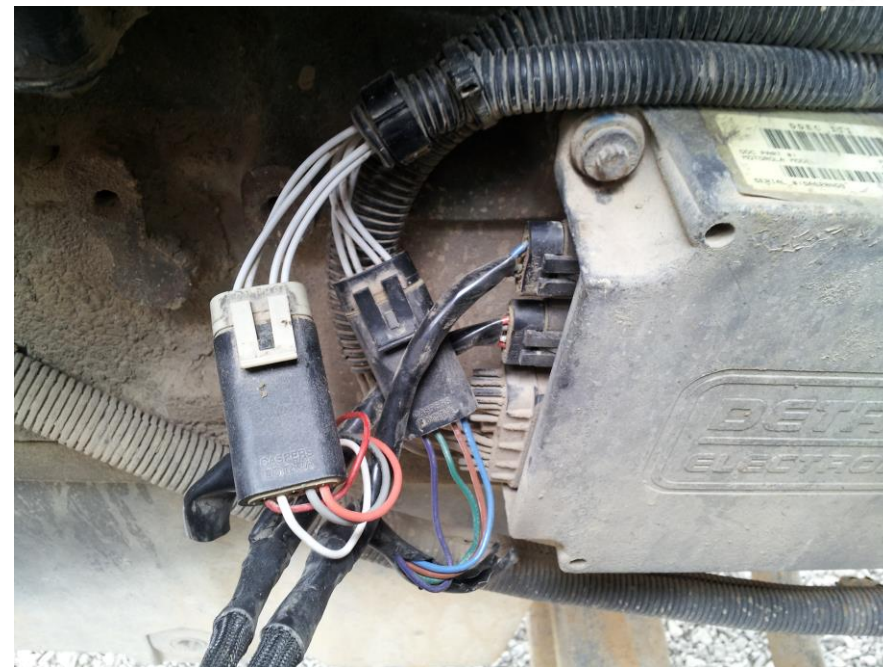
5425 Nashville Road, Bowling Green, KY 42101  
p 270-746-9999 f 270-746-9170  
[www.tsperformance.com](http://www.tsperformance.com)

## Detroit Installation

### Troubleshooting Section

1. Be sure you have nice clean +12 Volt power to **RED** wire with eyelet on fuel module.
2. The **BLACK** wires on the module should be routed to a good clean chassis ground.
3. Check all wiring connections, and confirm that they are secure.
4. If engine is still performing poorly, or any other problems exist in engine performance, **UNPLUG** the MPHD Module while leaving the module harness still connected to the injectors in the valve cover. Start the engine and examine engine performance once again.

**\*\*If engine still performs poorly, confirm that all wiring connections are secure and contact TS Performance at (270) 746 – 9999.\*\***



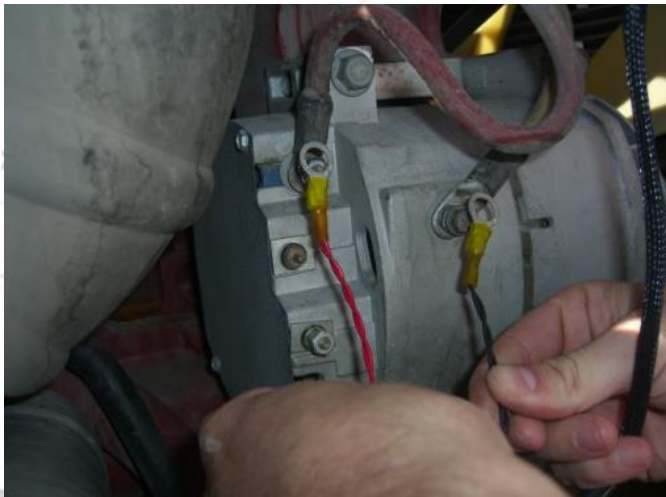
1. Shut machine off
2. Locate the factory ECM on the driver's side of the engine
3. Disconnect the top connector on the left side of the ECM, this should be a black connector, and connect it to our harness with the purple, green, brown, and blue wire.
4. Now connect the male connector in our harness that has the blue, brown, green, and purple wires to the top location on the ECM that is now open.
5. Disconnect the second plug on the ECM from the top, this should be a white connector, and connect it to our harness with the red, white, grey, and orange connector.
6. Now connect our matching male connector in our harness to the second location on the ECM that is now open.

## Power

1. Route the **RED** power wire from the module to clean 12 Volts, usually wired to the alternator on the passenger side of the vehicle.

## Ground

2. Route the **BLACK** ground wires from the module to clean chassis ground or directly to battery, usually the alternator on the passenger side of the vehicle is sufficient and easily accessed.



## Mounting location

1. You can mount the MPHD module anywhere away from extreme environments. There's plenty of room in the harness to mount away from heat. The area just above the valve cover has served for a great mounting location using the supplied zip ties and/or velcro. Just be sure the module is tightly secured to prevent damage.
2. You may also mount the module to existing brackets using bolts or screws using the tabs on the side of the plastic housing. (bolts or screws are not included)