



The Signature of Quality®

**FEDERAL INDUSTRIES**

A Standex Company  
215 Federal Avenue  
Belleville, WI 53508-9201

Phone: 800-356-4206  
Fax: 608-424-3234  
Email: geninfo@federalind.com  
Website: www.federalind.com

Project Name: \_\_\_\_\_

Item #: \_\_\_\_\_

Model #: \_\_\_\_\_ Qty: \_\_\_\_\_

Approval: \_\_\_\_\_

AIA#

SIS#

## HIGH VOLUME REFRIGERATED DELI CASE

Display more product and serve more customers with presentation and value in mind. Cases are available in lengths of 36", 50", 59", and 77". Designed for continuous case line-ups without middle end glass.



MODEL	LENGTH ( Includes End Panels )
<input type="checkbox"/> SGR3648CD	36.13 x 35.31 x 48 (in) 918 x 897 x 1219 (mm)
<input type="checkbox"/> SGR5048CD	50.13 x 35.31 x 48 (in) 1273 x 897 x 1219 (mm)
<input type="checkbox"/> SGR5948CD	59.13 x 35.31 x 48 (in) 1502 x 897 x 1219 (mm)
<input type="checkbox"/> SGR7748CD	77.13 x 35.31 x 48 (in) 1959 x 897 x 1219 (mm)

## STANDARD FEATURES

### Model Features

- Removable rear wrapping board.
- Tempered thermopane tilt-out front glass for easy cleaning. Front glass is sloped for high visual product displays.
- Tempered thermopane glass top, ends, and doors.
- Removable sliding rear doors, shelf light, shelf supports, and shelf.
- Steel base construction with a choice of six standard laminates on base. Other finishes optional.
- Removable, scratch-resistant, rustproof white display deck.
- Easily accessible light switch and adjustable temperature control.
- Average case temperature of 36° to 38° is maintained.
- Rear access of the refrigeration system for quick and easy service.
- Black trim.
- Designed for continuous line-ups.

### Refrigeration

- Condenser air filter on self-contained units.
- Condensate evaporator provided for a totally self-contained system.
- Oversized coil and low-velocity fan system maintains high humidity and product freshness.
- Easy clean, rustproof insulated evaporator coil compartment.
- Thermometer.
- 134A Refrigerant.

### Shelving

- Adjustable full-length stainless steel lighted mezzanine shelf. Shelf is adjustable up and down and can also be tilted in three positions.

### Lighting

- LED top light and shelf lights.

### Agency Approvals

- UL Safety and UL Sanitation listed

## OPTIONAL ACCESSORIES

- |  |  |
|--|--|
| <input type="checkbox"/> Special Base Finish                                       | <input type="checkbox"/> Legs                                |
| <input type="checkbox"/> Additional Mezzanine Shelf                                | <input type="checkbox"/> Top Cutting Board, White            |
| <input type="checkbox"/> Remote Refrigeration                                      | <input type="checkbox"/> Package Shelf                       |
| <input type="checkbox"/> Reflective Ends   | <input type="checkbox"/> Light Below Package Shelf           |
| <input type="checkbox"/> White or Mirrored Interior Ends With Laminated Exterior   | <input type="checkbox"/> Front Glass and Rear Door Locks     |
| <input type="checkbox"/> Reflective Rear Doors                                     | <input type="checkbox"/> Joining Kit for Continuous Line-ups |
| <input type="checkbox"/> Casters/Cord & Plug Included (Self-Contained Models Only) | <input type="checkbox"/> Scale Platform                      |
| <input type="checkbox"/> Cord & Plug (Self-Contained Models Only)                  | <input type="checkbox"/> Step Riser or Pan Holder            |
| NEMA 5-15P for 36", 50", 59" Models  |  |
| NEMA 5-20P for 77" Models  |  |



WARRANTY\*  
One year Parts and Labor  
2nd thru 5th year part  
only service compressor  
(U.S.A and Canada)



Note: Information is subject to change at any time.  
Visit [www.federalind.com](http://www.federalind.com) for the most current specs.

AIA#

**HIGH VOLUME REFRIGERATED DELI CASE**

SIS#

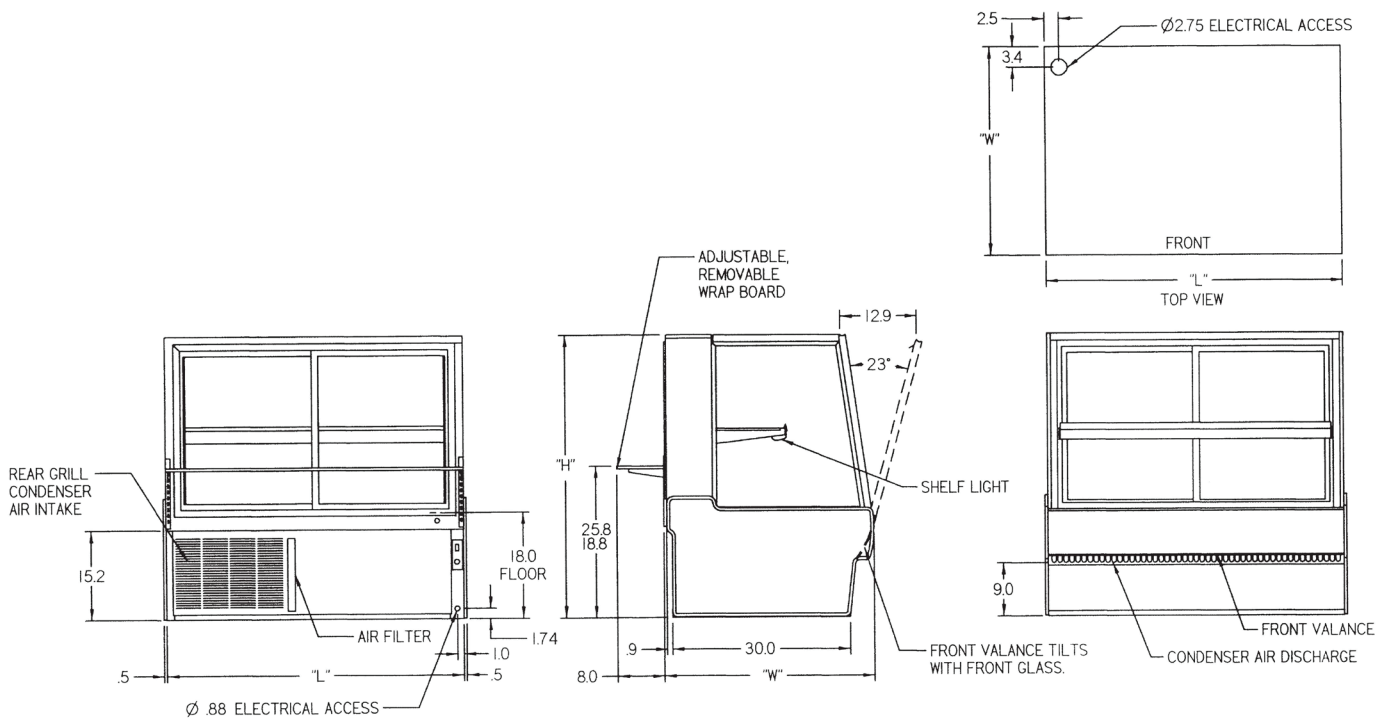
**Product Specifications**

Intended Environment: Type I - Designed to operate in maximum ambient conditions of 75°F (24°C) and 55% relative humidity unless noted otherwise in system information below.

Zone	Intended Product To Be Displayed	Avg Prod Temp °F/°C
All	Packaged Refrigerated Products	38°F / (3.3°C)

DIMENSION: xx"/(mm)

DIMENSION TOLERANCE +/- 0.25 (6.4)



MODEL	DIMENSIONS				SHIPPING WHT		CAPACITY (STEP RISERS)	SELF-CONTAINED 120/60/1	REMOTE 120/60/1
	L	D	H1	UNITS	LBS	KILO			
SGR3648CD	36.13	35.31	48	in.	590	268	3	1/3 HP - 9.0 AMPS	2.3 AMPS
	918	897	1219	mm.					
SGR5048CD	50.13	35.31	48	in.	620	281	3	1/2 HP - 10.5 AMPS	2.3 AMPS
	1273	897	1219	mm.					
SGR5948CD	59.13	35.31	48	in.	650	295	4	1/2 HP - 11.6 AMPS	2.5 AMPS
	1502	897	1219	mm.					
SGR7748CD	77.13	35.31	48	in.	860	390	6	3/4 HP - 14.2 AMPS	3.3 AMPS
	1959	897	1219	mm.					

- If a GFCI circuit is required, a GFCI Breaker MUST be used instead of GFCI receptacle.
- Refrigerated cases are designed to operate in a maximum of 75°F (24°C) ambient and 55% relative humidity.
- Due to continuing engineering improvements, specifications are subject to change without notice.



*The Signature of Quality*

**FEDERAL INDUSTRIES**

A Standex Company

215 Federal Avenue, Belleville, WI 53508-9201

PHONE: 800-356-4206

E-MAIL: [geninfo@federalind.com](mailto:geninfo@federalind.com)

FAX: 608-424-3234

WEBSITE: [www.federalind.com](http://www.federalind.com)

