



Model: \_\_\_\_\_ Item #: \_\_\_\_\_ Date: \_\_\_\_\_

Project: \_\_\_\_\_ Qty: \_\_\_\_\_ Approved By: \_\_\_\_\_

# Combination Ice Bin

# Royal Series Underbar



KR19-M36L-10

### Options & Accessories

KR-101	Condiment Tray
KR-103	12" deep Stainless Steel Divider
KR-113	15" deep Stainless Steel Divider
KR-303	Left and Right End Side Splashes
KR-310	Right End Side Splash
KR-311	Left End Side Splash
KR-401	Cap Catcher and Opener
KR-406	Faucet Installed Over Ice Bin
KR-421	2 Metal Wire Bottle Racks
KR-501	Towel Ring
KR-502	15" Deep Liner on Ice Station
SC"XX"H	Partial Sliding Cover Ice Bin ("XX" denotes size of Ice Bin)
SC"XX"F	Full Sliding Cover for Ice Bin ("XX" denotes size of Ice Bin)

### Standard Features & Specifications

- 12" deep ice bin with 1" drain, 1/2" drain with cold plate
- Insulated bottle section with wire bottle racks (KR-421) and 1" drain
- Soda line access cutout in rear on cold plate units
- Optional 15" deep liner that holds 25% more ice (KR-502)
- Optional built-in speed rail
- 10 circuit cold plate available

### Materials

- Interior: 20 gauge stainless steel. 12" deep ice bin section. 10" deep bottle section, wire racks included
- Front Apron: 20 gauge stainless steel clad over 20 gauge galvanized steel
- Sides: 20 gauge stainless steel
- Backsplash: 20 gauge stainless steel
- Back & Bottom: 20 gauge galvanized steel

### Drains & Plumbing

- 1" NPS Drain, Elixir section
- 1" IPS Drain, Ice bin
- 1/2" IPS Drain, Ice bin with Cold Plate. 4" PVC tailpiece provided. PVC tailpiece required to avoid condensation through metal to metal contact.

### Cold Plate

- Cast aluminum post mix plate with 10 circuits. Plate is sealed into bottom. Each circuit is 5/16" OD stainless steel tubing. Two full with remainder to be half circuits. Bump and swedge fittings on ends.

### Tubing Access (Cold Plate)

- 3/4" x 3-1/2" cutout in left side of backsplash

### Insulation

- Foamed-in-place polyurethane

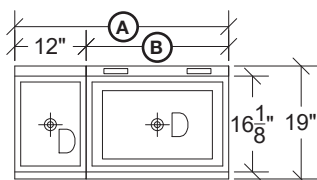
### Backsplash

- 6-1/2"H x 1-1/2"D

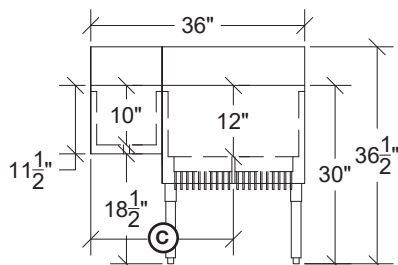
### Legs

- 1-5/8" tubular legs w/ grey plastic bullet foot

### Top View



### Front View



Model	Overall Length (A)	Overall Depth (B)	Ice Bin Length	Ice Bin Location	Ice Bin Capacity (lbs.)	Left Side to Ice Bin Drain (C)	Bottles Stored	Cold Plate Circuits	Weight (lbs.)
KR19-M36R	36"	19"	24"	Right	74	24"	6	N/A	95
KR19-M36L	36"	19"	24"	Left	74	12"	6	N/A	95
KR19-M36R-10	36"	19"	24"	Right	74	24"	6	10	172
KR19-M36L-10	36"	19"	24"	Left	74	12"	6	10	172
KR19-M42R	42"	19"	30"	Right	92	27"	6	N/A	108
KR19-M42L	42"	19"	30"	Left	92	15"	6	N/A	108
KR19-M42R-10	42"	19"	30"	Right	92	27"	6	10	185
KR19-M42L-10	42"	19"	30"	Left	92	15"	6	10	185
KR19-M48C	48"	19"	24"	Center	74	24"	12	N/A	116
KR19-M48R	48"	19"	36"	Right	110	30"	6	N/A	116
KR19-M48L	48"	19"	36"	Left	110	18"	6	N/A	116
KR19-M48C-10	48"	19"	24"	Center	74	24"	12	10	193
KR19-M48R-10	48"	19"	36"	Right	110	30"	6	10	193
KR19-M48L-10	48"	19"	36"	Left	110	18"	6	10	193