

DIRECT STEAM WALL MOUNTED TILTING KETTLE



- DWT-20
- DWT-30
- DWT-40
- DWT-60
- DWT-80
- DWT-100

OPERATION SHALL BE BY:

Direct steam at a minimum of 5 psi (34 kPa) and a maximum of 30 psi (207 kPa).

OPTIONS & ACCESSORIES AT ADDITIONAL COST

- | | | |
|--|--|---|
| <input type="checkbox"/> 50 psi (345 kPa) high pressure operation for higher cooking temperature | <input type="checkbox"/> Etched liter markings (LM-) | <input type="checkbox"/> Strainer hook (SH-) |
| <input type="checkbox"/> 2" (50 mm) draw-off valve with strainer (TVT-2) | <input type="checkbox"/> Correctional package | <input type="checkbox"/> Contoured measuring strip (CMS-) |
| <input type="checkbox"/> 3" (76 mm) draw-off valve with strainer (TVT-3) | <input type="checkbox"/> In-wall carrier (IWC-1) | <input type="checkbox"/> Pour lip strainer (TKS-) |
| <input type="checkbox"/> Spring assist hinged stainless steel cover (CH-) | <input type="checkbox"/> Triple basket assembly (TBA-) | <input type="checkbox"/> Pressure reducing valve (PRV-2) |
| <input type="checkbox"/> Single pantry faucet with swing spout (SF-18) | <input type="checkbox"/> Solid disc strainer for draw-off valve (TSS-) | <input type="checkbox"/> Pan Carrier (PC-1) |
| <input type="checkbox"/> Double pantry faucet with swing spout (DF-18) | <input type="checkbox"/> Steam trap assembly consisting of steam trap, line strainer and check valve (STA-2) | <input type="checkbox"/> Draw-off valve hose kit with 8' hose (DVHK-) |
| <input type="checkbox"/> Etched gallon markings (GM-) | <input type="checkbox"/> Lift off kettle cover (C-) | <input type="checkbox"/> Kettle heat shield (KHS-) |

STANDARD CONSTRUCTION SPECIFICATIONS

Shall be a Crown model DWT-20, DWT-30, DWT-40, DWT-60, DWT-80, or DWT-100 direct steam connected, 2/3 jacketed, wall mounted kettle.

A double wall kettle interior shall form a steam jacket around the lower 2/3 of the kettle.

The bottom of the kettle shall be of hemispherical design for superior heat circulation.

The kettle liner shall be standard with type 316 stainless steel for high acid content cooking.

Each supporting console shall have provisions for four 3/4" mounting studs and concealed plumbing.

A tilt mechanism shall permit the kettle to tilt forward part 90° for complete emptying.

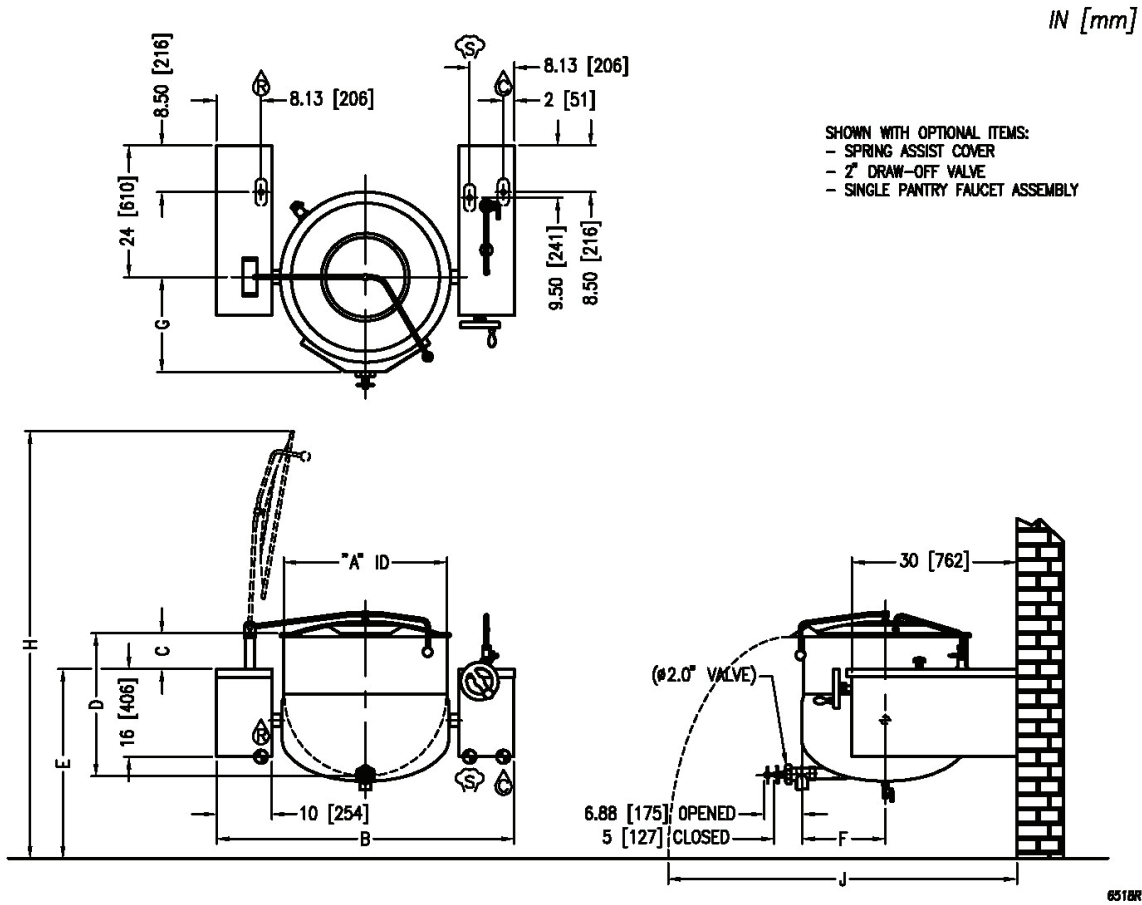
The tilting mechanism shall be self-locking for positive stop action.

Construction shall be all welded #3 finish, stainless steel, type 304.

A steam control valve shall be provided and mounted in the right console.



Approval Notes: _____



SERVICE CONNECTIONS

⊕ – STEAM SUPPLY: 3/4" IPS (19 mm) 5-30 PSI (34-207 kPa). Optional 5-50 PSI (34-345 kPa)*

Ⓡ – CONDENSATE RETURN: 1/2" IPS (13 mm)

Ⓢ – COLD WATER: 3/8" IPS (10 mm) O.D. tubing to faucet (optional)

* Pressure reducing valve is required if incoming pressure exceeds 50 PSI (345 kPa).

DIMENSIONS

MODEL	CAPACITY	UNITS	A	B	C	D	E	F	G	H	J
DWT-20	20 gallons (76 liters)	in (mm)	21" (533)	45.75" (1162)	4.5" (114)	18" (460)	30.5" (775)	12.75" (324)	13" (330)	56.75" (1441)	50.63" (1286)
DWT-30	30 gallons (114 liters)	in (mm)	24" (610)	48.75" (1238)	5" (127)	20" (510)	30.5" (775)	13.5" (343)	14.5" (368)	67" (1702)	52.13" (1324)
DWT-40	40 gallons (152 liters)	in (mm)	26" (660)	50.75" (1289)	6.5" (165)	22.5" (570)	30.5" (775)	14.25" (362)	15.5" (394)	70.75" (1797)	53.63" (1363)
DWT-60	60 gallons (227 liters)	in (mm)	29.5" (750)	54" (1372)	6.5" (165)	26" (660)	34.5" (876)	15.5" (394)	17.25" (438)	78" (1981)	55.13" (1401)
DWT-80	80 gallons (303 liters)	in (mm)	33" (840)	57.5" (1461)	6.5" (165)	28" (710)	36.5" (927)	17.5" (445)	19" (483)	83.5" (2121)	57.63" (1464)
DWT-100	100 gallons (379 liters)	in (mm)	35.5" (902)	60" (1524)	6.5" (165)	30" (762)	38.5" (978)	17" (432)	20.25" (514)	88" (2235)	64.25" (1632)

**INTENDED FOR COMMERCIAL USE ONLY.
NOT FOR HOUSEHOLD USE.**

