

REPLACING THE FLOW CELL

SILICONE O-RING

THE SILICONE O-RING, which seals the flow cell, seats by its own tension on the top of the Convertible Flow Cell.

When opening and closing the flow cell, sometimes the o-ring is dislodged.

Please follow these illustrated steps to reseat the o-ring correctly (*ie, without rolling or twisting the o-ring*) for good sealing of the flow cell.

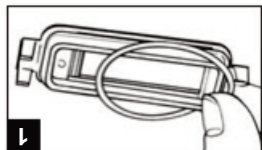


IBI SCIENTIFIC

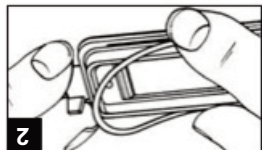
9861 Kapp Court • P.O. Box 219 • Peosta, IA 52068
Tele: (563) 690-0484 • **Toll Free:** (800) 253-4942
Fax: (563) 690-0490 • **E-Mail:** info@ibisci.com
www.ibisci.com



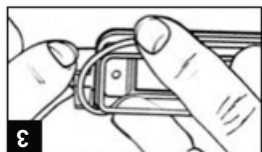
INSTRUCTIONS FOR REPLACEMENT OF THE SILICONE O-RING.



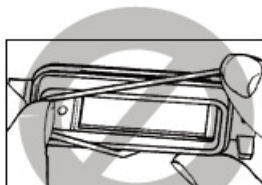
Turn the flow cell top upside down on a flat surface and place o-ring as illustrated.



Compress o-ring with thumb and index finger and push o-ring, stretching it, along the o-ring restraining ledge. Use fingers of other hand to secure the top.

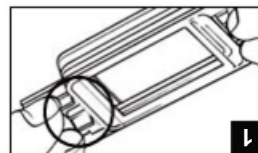


If pushed correctly, the o-ring, when released, will fall in place at the end of the flow cell.

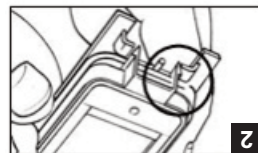


DO NOT Stretch the o-ring over the flow cell by pulling.

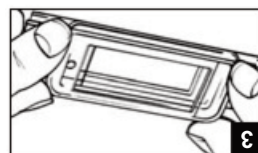
TO DETACH AND REATTACH THE TOP OF THE CONVERTIBLE FLOW CELL



To detach: Turn the flow cell upside down on a flat surface. Push the flexile, securing tabs toward the center to release. Only a moderate amount of pressure is needed to release. Tabs at both ends must be released: this is not a hinge joint.



To reattach: Place the flow cell right side up on flat surface. Align the flexile, securing tabs at both ends of the top between the securing flanges at the bottom of the flow cell.



Press evenly at the ends until the top snaps into place. **DO NOT** put pressure on the glass or plastic viewing surfaces.