

# Omega Pro-15-2KW-8 Small Vented Design

By Jerry McNutt, Eminence Speaker LLC  
1000 W F3 of 53Hz High Pass at 48Hz  
Great for Small PA top box or Bass Guitar



## Box Properties

--Description--

Name:

Type: Vented Box

Shape: Prism, square (optimum)

--Box Parameters--

Vb = 2.75 cu.ft

V(total) = 2.997 cu.ft

Fb = 58 Hz

QL = 7

F3 = 52.92 Hz

Fill = minimal

--Vents--

No. of Vents = 1

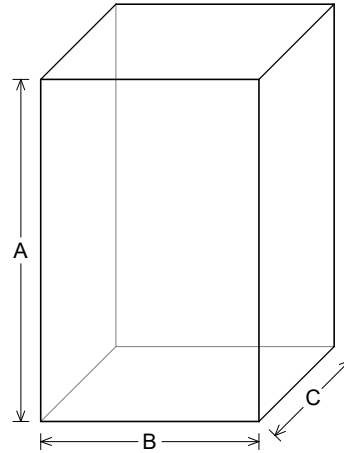
Vent shape = rectangle

Vent ends = one flush

Hv = 14 in

Wv = 1.75 in

Lv = 4.098 in



--External Dimensions--

A = 29.49 in

B = 18.8 in

C = 12.19 in

--Internal Dimensions--

A = 27.99 in

B = 17.3 in

C = 10.69 in

--Wall Thickness--

Front = 0.75 in

Side = 0.75 in

## Driver Properties

--Description--

Name: Omega Pro 15-2KW-8

Type: Standard one-way driver

Company: Eminence Speaker LLC

Comment: High Power Woofer

--Configuration--

**No. of Drivers = 1**

--Mechanical Parameters--

Fs = 39.7 Hz

Qms = 13.9

Vas = 142.5 liters

Cms = 0.14 mm/N

Mms = 111.9 g

Rms = 2 kg/s

Xmax = 7.4 mm

Xmech = 13 mm

P-Dia = 328.3 mm

Sd = 856.3 sq.cm

P-Vd = 0.626 liters

--Electrical Parameters--

Qes = 0.46

Re = 6 ohms

Le = 1.13 mH

Z = 8 ohms

BL = 19.1 Tm

Pe = 1000 watts

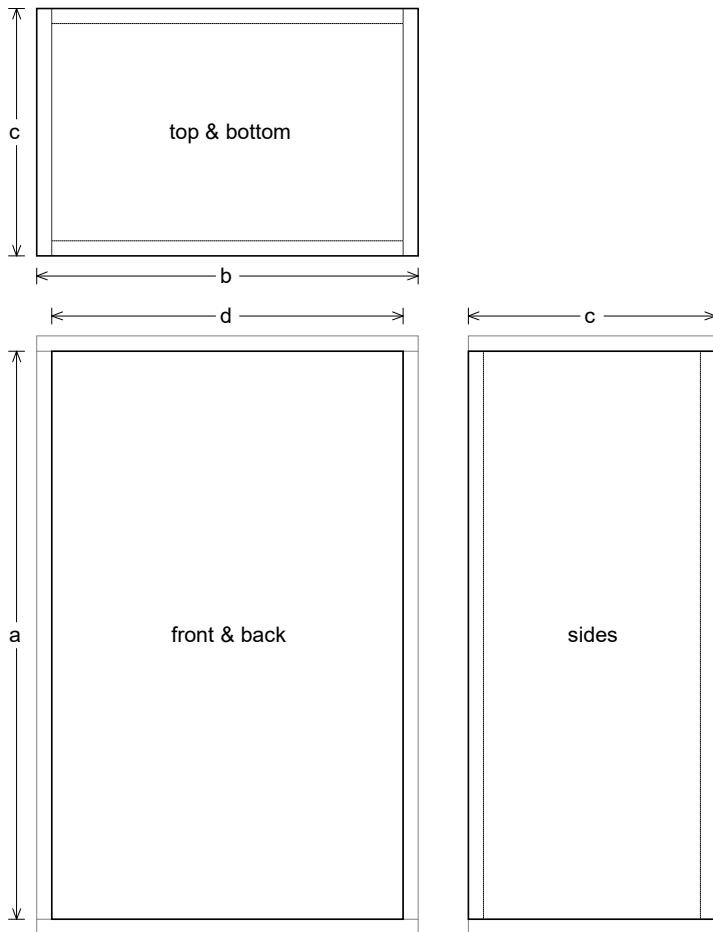
--Electromech. Parameters--

Qts = 0.445

no = 1.869 %

1-W SPL = 94.86 dB

2.83-V SPL = 96.11 dB



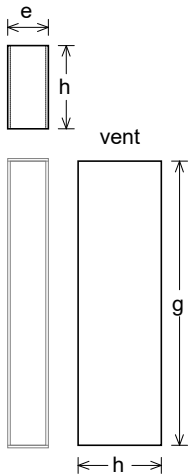
**Box Parts**

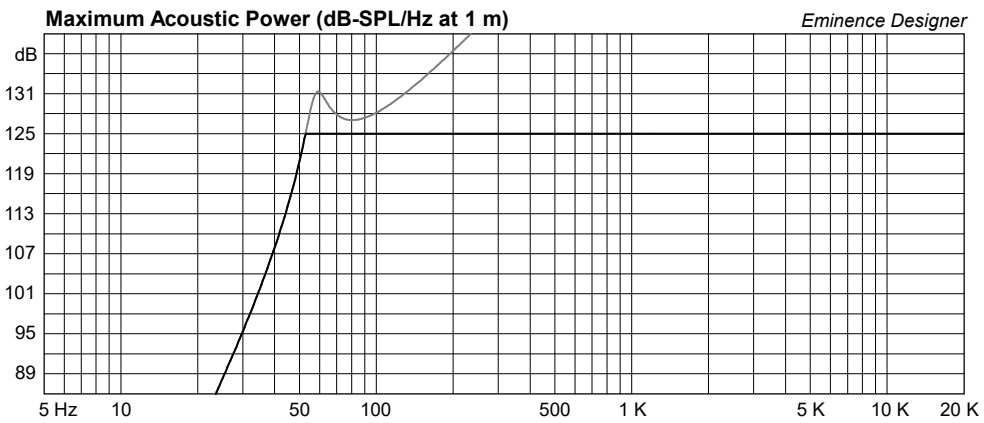
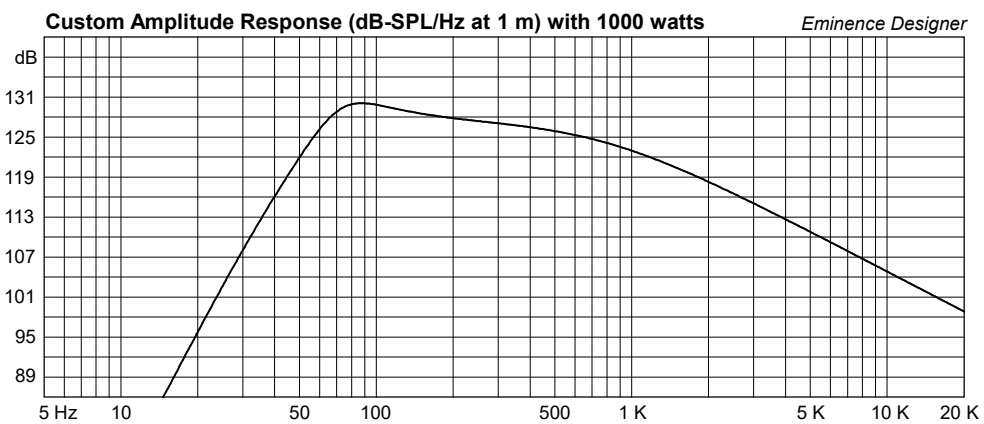
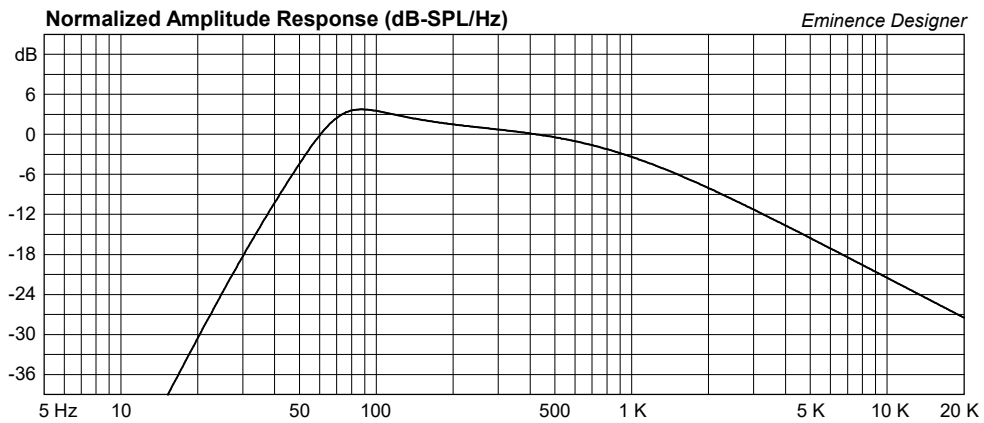
Box Shape: Optimum Square Prism  
 1 Top, 1 Bottom: depth (c) = 12.19 in  
 width (b) = 18.8, thickness = 0.75 in  
 1 Front, 1 Back: height (a) = 27.99 in  
 width (d) = 17.3, thickness = 0.75 in  
 2 Sides: height (a) = 27.99 in  
 depth (c) = 12.19, thickness = 0.75 in

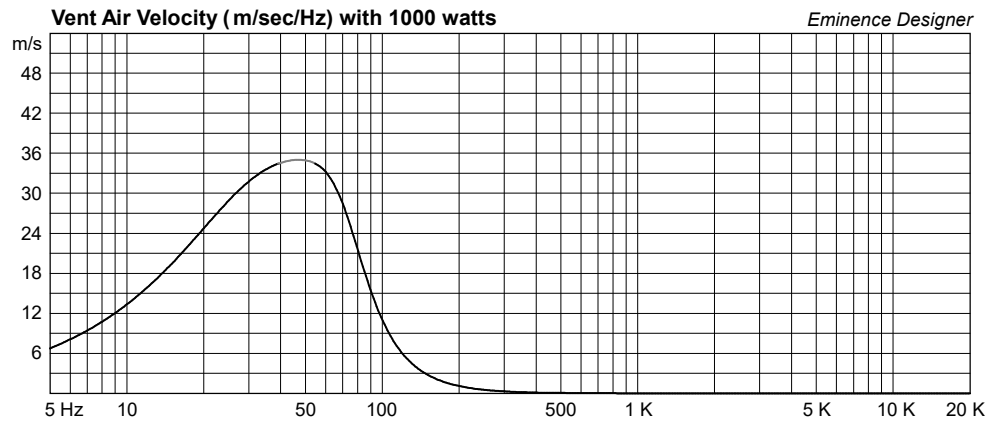
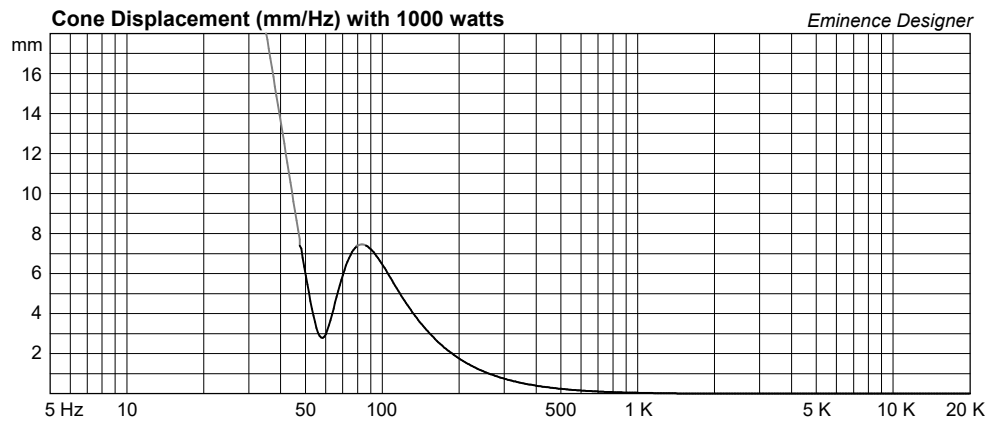
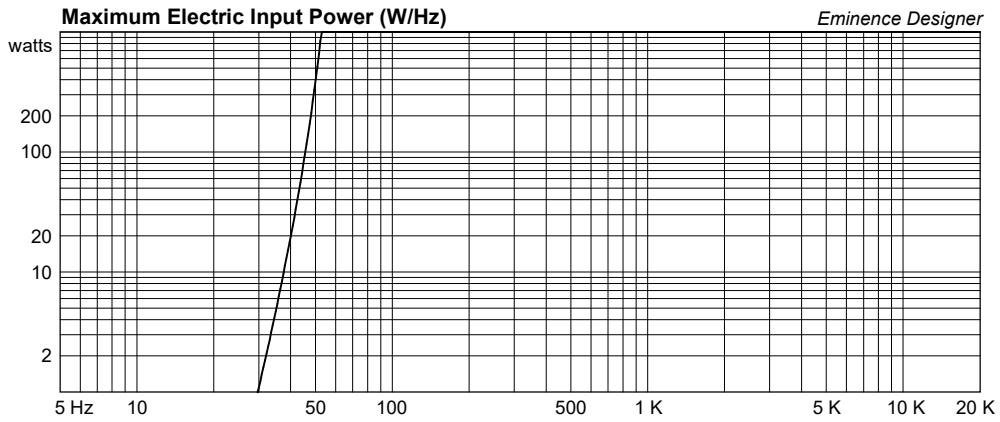
*--Vent Parts--*

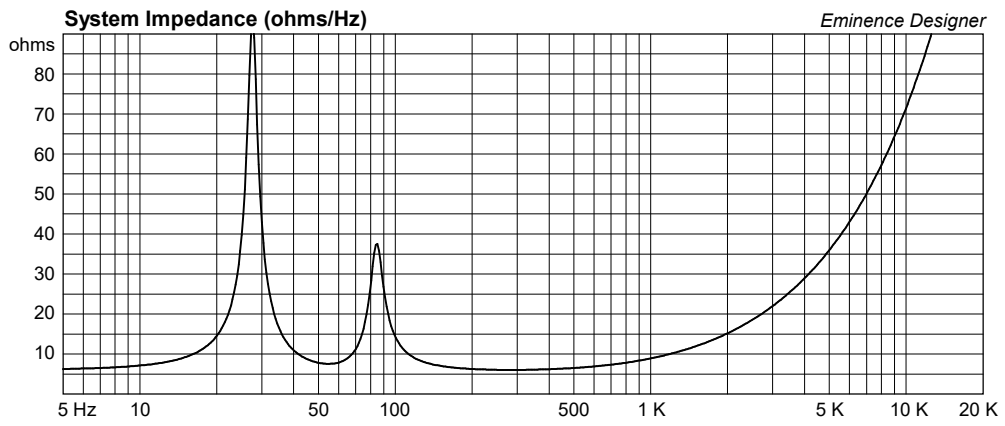
1 Top, 1 Bottom:  
 width (e) = 2, length (h) = 4.098 in  
 thickness = 0.125 in  
 2 Sides:  
 height (g) = 14, length (h) = 4.098 in  
 thickness = 0.125 in

*--Driver Mounting--*  
 Mounting: Flush









# Omega Pro 15-2KW-8 Medium Vented Design

By Jerry McNutt, Eminence Speaker LLC  
725 Watts F3 47 Hz High Pass at 40 Hz  
Great for a Small High Power Two Way Top Box or Bass Guitar



## Box Properties

### --Description--

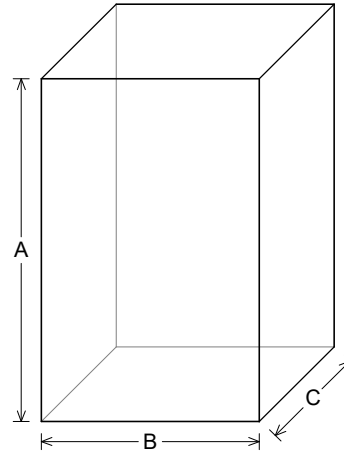
Name:  
Type: Vented Box  
Shape: Prism, square (optimum)

### --Box Parameters--

Vb = 3.5 cu.ft  
V(total) = 3.815 cu.ft  
Fb = 50 Hz  
QL = 7  
F3 = 46.64 Hz  
Fill = minimal

### --Vents--

No. of Vents = 2  
Vent shape = rectangle  
Vent ends = one flush  
Hv = 4.271 in  
Wv = 4.271 in  
Lv = 5.948 in



### --External Dimensions--

A = 31.84 in  
B = 20.25 in  
C = 13.09 in

### --Internal Dimensions--

A = 30.34 in  
B = 18.75 in  
C = 11.59 in

### --Wall Thickness--

Front = 0.75 in  
Side = 0.75 in

## Driver Properties

### --Description--

Name: Omega Pro 15-2KW-8  
Type: Standard one-way driver  
Company: Eminence Speaker LLC  
Comment: High Power Woofer

### --Configuration--

**No. of Drivers = 1**

### --Mechanical Parameters--

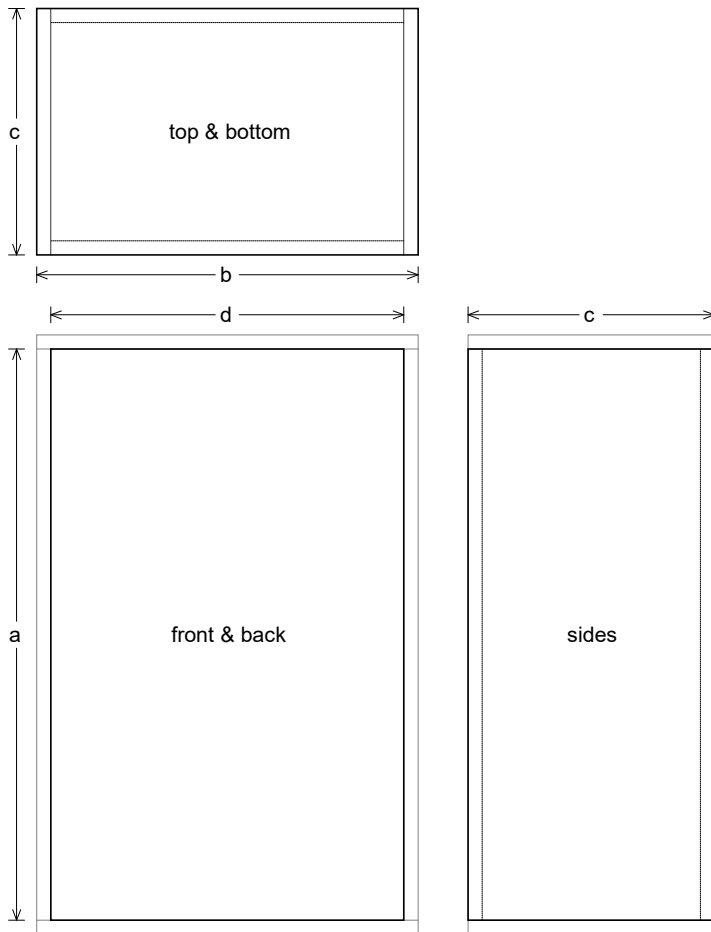
Fs = 39.7 Hz  
Qms = 13.9  
Vas = 142.5 liters  
Cms = 0.14 mm/N  
Mms = 111.9 g  
Rms = 2 kg/s  
Xmax = 7.4 mm  
Xmech = 13 mm  
P-Dia = 328.3 mm  
Sd = 856.3 sq.cm  
P-Vd = 0.626 liters

### --Electrical Parameters--

Qes = 0.46  
Re = 6 ohms  
Le = 1.13 mH  
Z = 8 ohms  
BL = 19.1 Tm  
Pe = 1000 watts

### --Electromech. Parameters--

Qts = 0.445  
no = 1.869 %  
1-W SPL = 94.86 dB  
2.83-V SPL = 96.11 dB



**Box Parts**

Box Shape: Optimum Square Prism

1 Top, 1 Bottom: depth ( $c$ ) = 13.09 in  
width ( $b$ ) = 20.25, thickness = 0.75 in

1 Front, 1 Back: height ( $a$ ) = 30.34 in  
width ( $d$ ) = 18.75, thickness = 0.75 in

2 Sides: height ( $a$ ) = 30.34 in  
depth ( $c$ ) = 13.09, thickness = 0.75 in

*--Vent Parts--*

2 Tops, 2 Bottoms:

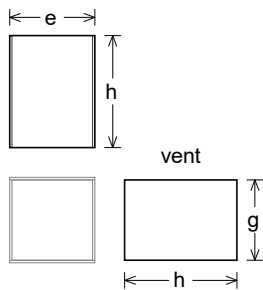
width ( $e$ ) = 4.521, length ( $h$ ) = 5.948 in  
thickness = 0.125 in

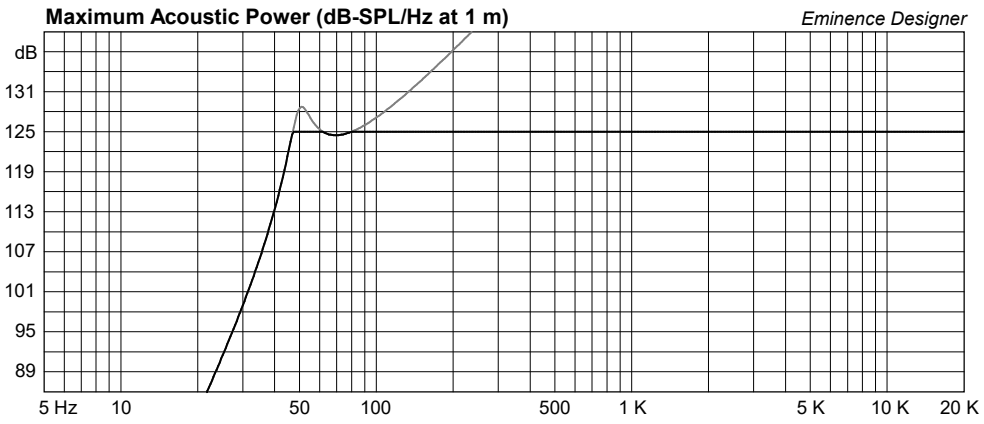
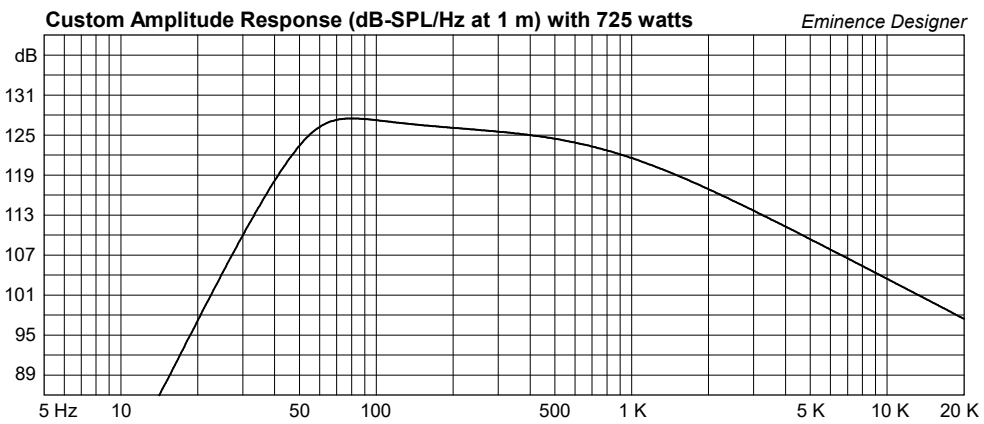
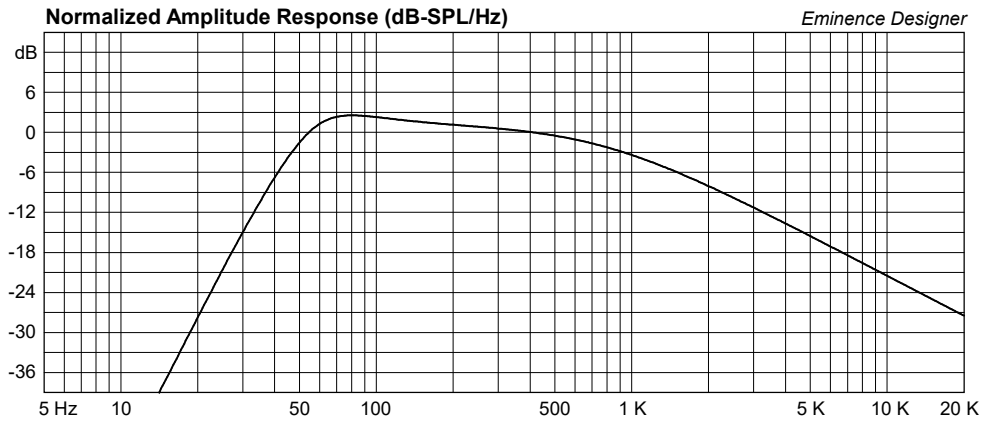
4 Sides:

height ( $g$ ) = 4.271, length ( $h$ ) = 5.948 in  
thickness = 0.125 in

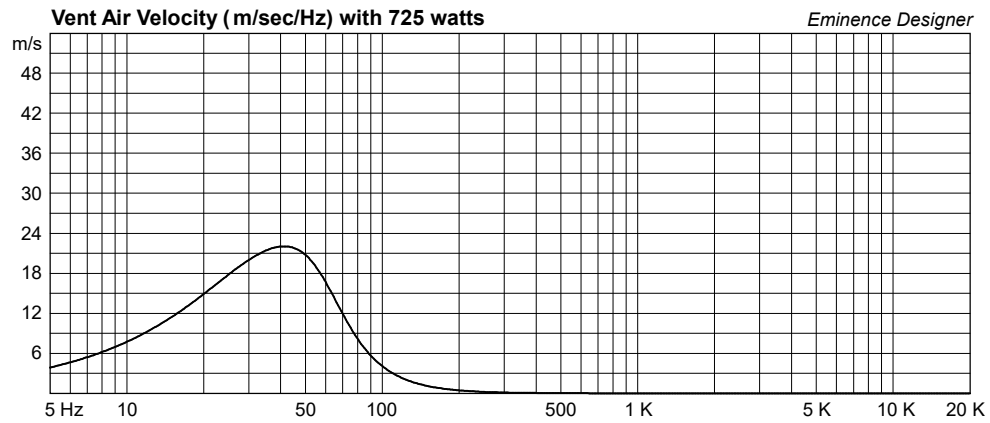
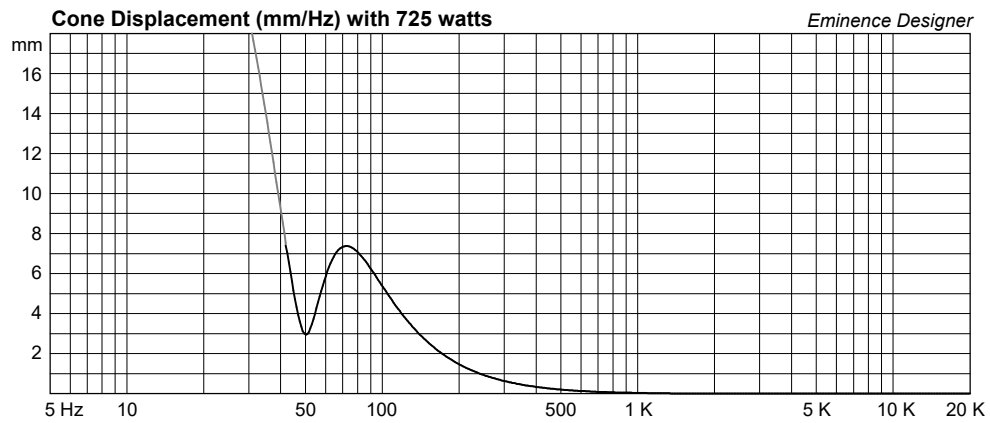
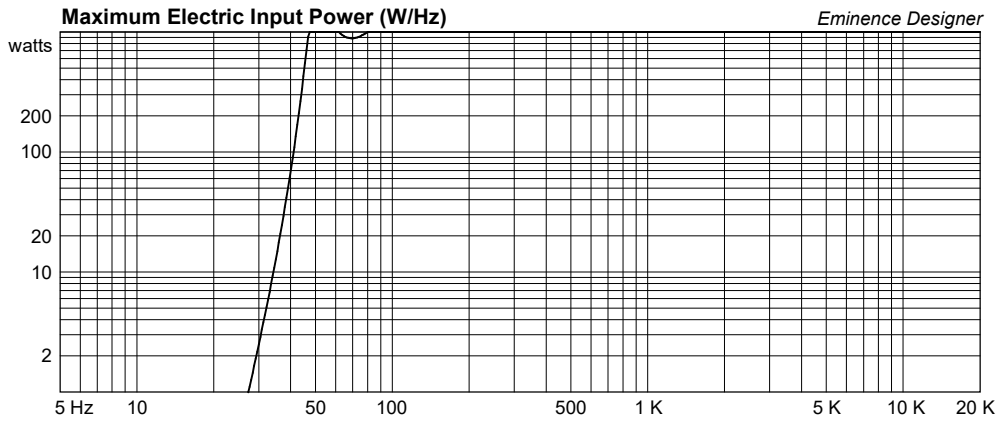
*--Driver Mounting--*

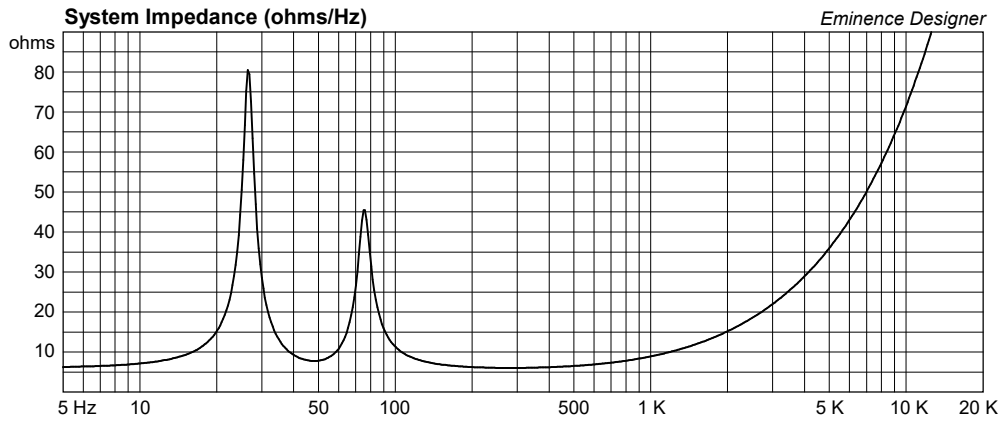
Mounting: Flush











# Omega Pro 15-2KW-8 Large Vented Design

By Jerry McNutt, Eminence Speaker LLC  
500 Watts F3 39.9 Hz High Pass at 35 Hz  
Excellent Bass Guitar or Large Full Range Box



## Box Properties

--Description--

Name:

Type: Vented Box

Shape: Prism, square (optimum)

--Box Parameters--

Vb = 5.572 cu.ft

V(total) = 5.802 cu.ft

Fb = 45 Hz

QL = 7

F3 = 39.83 Hz

Fill = minimal

--Vents--

No. of Vents = 2

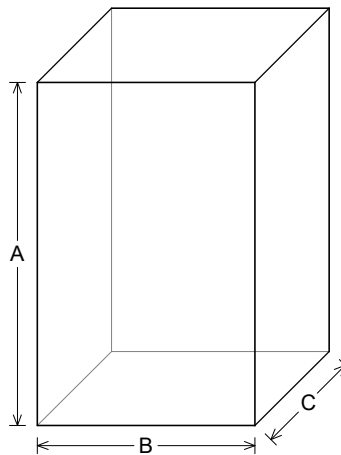
Vent shape = rectangle

Vent ends = one flush

Hv = 4 in

Wv = 4 in

Lv = 2.574 in



--External Dimensions--

A = 36.39 in

B = 23.06 in

C = 14.83 in

--Internal Dimensions--

A = 34.89 in

B = 21.56 in

C = 13.33 in

--Wall Thickness--

Front = 0.75 in

Side = 0.75 in

## Driver Properties

--Description--

Name: Omega Pro 15-2KW-8

Type: Standard one-way driver

Company: Eminence Speaker LLC

Comment: High Power Woofer

--Configuration--

**No. of Drivers = 1**

--Mechanical Parameters--

Fs = 39.7 Hz

Qms = 13.9

Vas = 142.5 liters

Cms = 0.14 mm/N

Mms = 111.9 g

Rms = 2 kg/s

Xmax = 7.4 mm

Xmech = 13 mm

P-Dia = 328.3 mm

Sd = 856.3 sq.cm

P-Vd = 0.626 liters

--Electrical Parameters--

Qes = 0.46

Re = 6 ohms

Le = 1.13 mH

Z = 8 ohms

BL = 19.1 Tm

Pe = 1000 watts

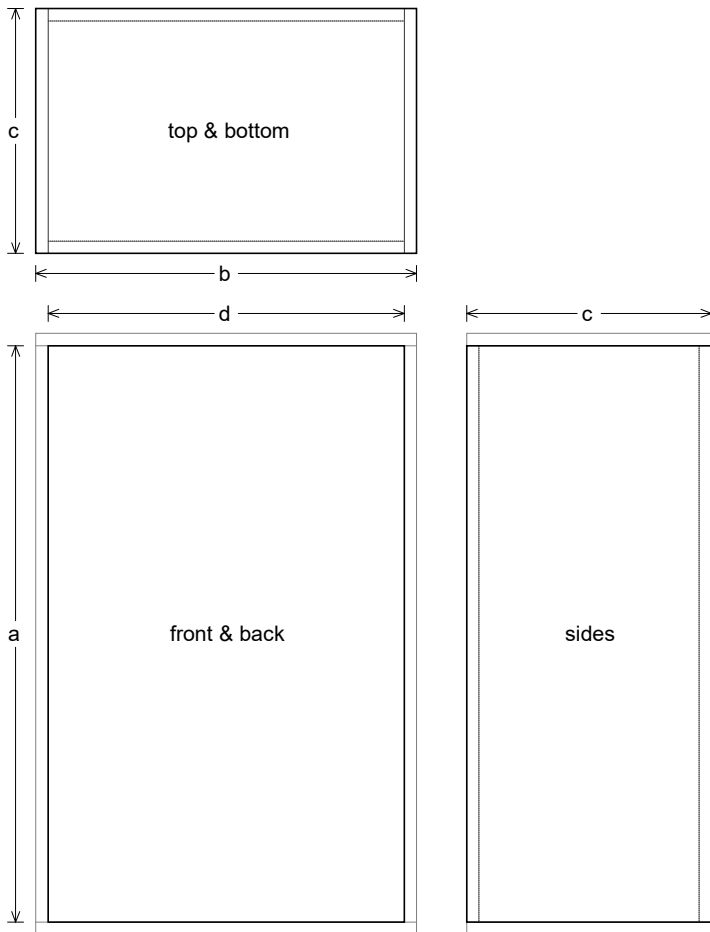
--Electromech. Parameters--

Qts = 0.445

no = 1.869 %

1-W SPL = 94.86 dB

2.83-V SPL = 96.11 dB



**Box Parts**

Box Shape: Optimum Square Prism  
 1 Top, 1 Bottom: depth (c) = 14.83 in  
 width (b) = 23.06, thickness = 0.75 in  
 1 Front, 1 Back: height (a) = 34.89 in  
 width (d) = 21.56, thickness = 0.75 in  
 2 Sides: height (a) = 34.89 in  
 depth (c) = 14.83, thickness = 0.75 in

*--Vent Parts--*

2 Tops, 2 Bottoms:  
 width (e) = 4.25, length (h) = 2.574 in  
 thickness = 0.125 in  
 4 Sides:  
 height (g) = 4, length (h) = 2.574 in  
 thickness = 0.125 in

*--Driver Mounting--*  
 Mounting: Flush

