



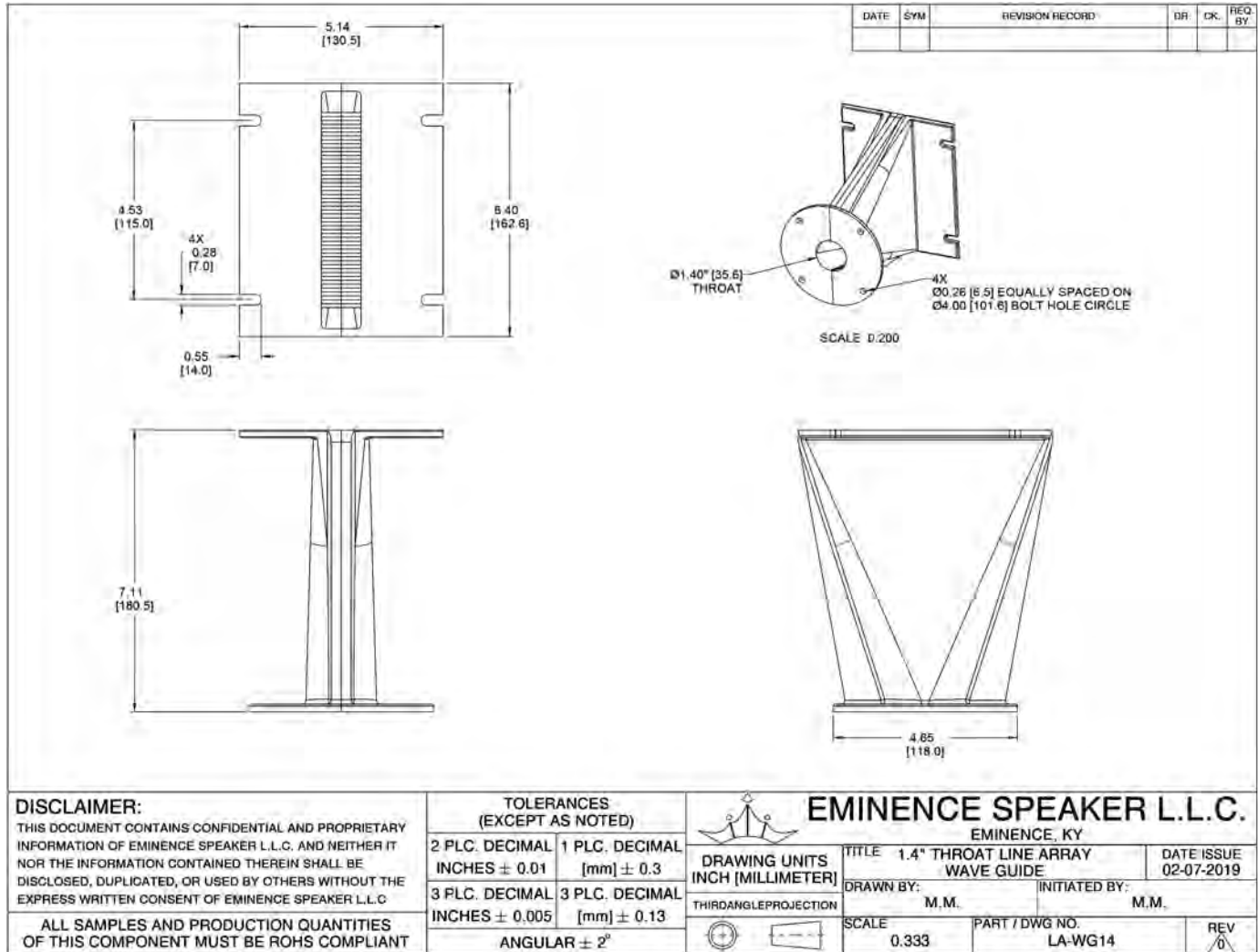
The Art and Science of Sound

LA-WG14

Line Array Wave Guide

Specification

TYPE	Bolt-On Waveguide
THROAT SIZE	1.4" [35.6mm]
DISPERSION	140° x 15°
LOWEST REC. X-OVER	1kHz
WIDTH/HEIGHT/DEPTH	5.2" x 6.4" x 7.1"
WIDTH/HEIGHT/DEPTH (mm)	131 x 163 x 181
CUT OUT	1" x 6" (25.4mm x 152.4mm)
WEIGHT	2.5lbs (1.13kg)
VOLUME DISPLACED	54.9 in3



DISCLAIMER:

THIS DOCUMENT CONTAINS CONFIDENTIAL AND PROPRIETARY INFORMATION OF EMINENCE SPEAKER L.L.C. AND NEITHER IT NOR THE INFORMATION CONTAINED THEREIN SHALL BE DISCLOSED, DUPLICATED, OR USED BY OTHERS WITHOUT THE EXPRESS WRITTEN CONSENT OF EMINENCE SPEAKER L.L.C.

ALL SAMPLES AND PRODUCTION QUANTITIES OF THIS COMPONENT MUST BE ROHS COMPLIANT

TOLERANCES (EXCEPT AS NOTED)

2 PLC. DECIMAL INCHES ± 0.01	1 PLC. DECIMAL [mm] ± 0.3
3 PLC. DECIMAL INCHES ± 0.005	3 PLC. DECIMAL [mm] ± 0.13
ANGULAR ± 2°	



EMINENCE SPEAKER L.L.C.

EMINENCE, KY

DRAWING UNITS
INCH [MILLIMETER]

TITLE 1.4" THROAT LINE ARRAY
WAVE GUIDE

DATE ISSUE
02-07-2019

THIRD ANGLE PROJECTION

DRAWN BY: M.M.

INITIATED BY: M.M.



SCALE
0.333

PART / DWG NO.
LA-WG14

REV
0

