

CB3015N-8 Small Vented Bass Guitar or PA

By Jerry McNutt, Eminence Speaker LLC
500 Watts F3 65 Hz



Box Properties

--Description--

Name:

Type: Vented Box

Shape: Prism, square

--Box Parameters--

Vb = 1.75 cu.ft

V(total) = 2.134 cu.ft

Fb = 55 Hz

QL = 7

F3 = 65 Hz

Fill = minimal

--Vents--

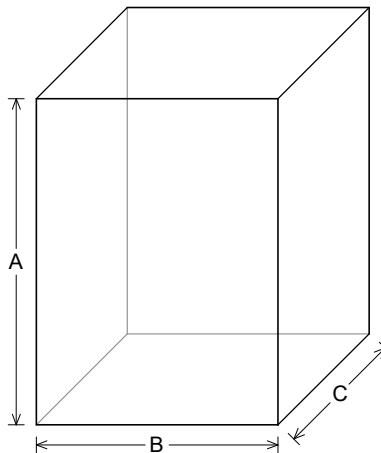
No. of Vents = 4

Vent shape = round

Vent ends = one flush

Dv = 3 in

Lv = 10.73 in



--External Dimensions--

A = 23.28 in

B = 17.25 in

C = 12.25 in

--Internal Dimensions--

A = 21.78 in

B = 15.75 in

C = 10.75 in

--Wall Thickness--

Front = 0.75 in

Side = 0.75 in

Driver Properties

--Description--

Name: CB3015N-8

Type: Standard one-way driver

Company: Eminence Speaker LLC

Comment: CannaBass 15" 500 Watt Bass Driver

--Configuration--

No. of Drivers = 1

--Mechanical Parameters--

Fs = 40.67 Hz

Qms = 3.6

Vas = 162.9 liters

Cms = 0.16 mm/N

Mms = 96.75 g

Rms = 6.86 kg/s

Xmax = 7.22 mm

Xmech = 14.2 mm

P-Dia = 328.3 mm

Sd = 856.3 sq.cm

P-Vd = 0.611 liters

--Electrical Parameters--

Qes = 0.43

Re = 5.5 ohms

Le = 0.59 mH

Z = 8 ohms

BL = 17.76 Tm

Pe = 500 watts

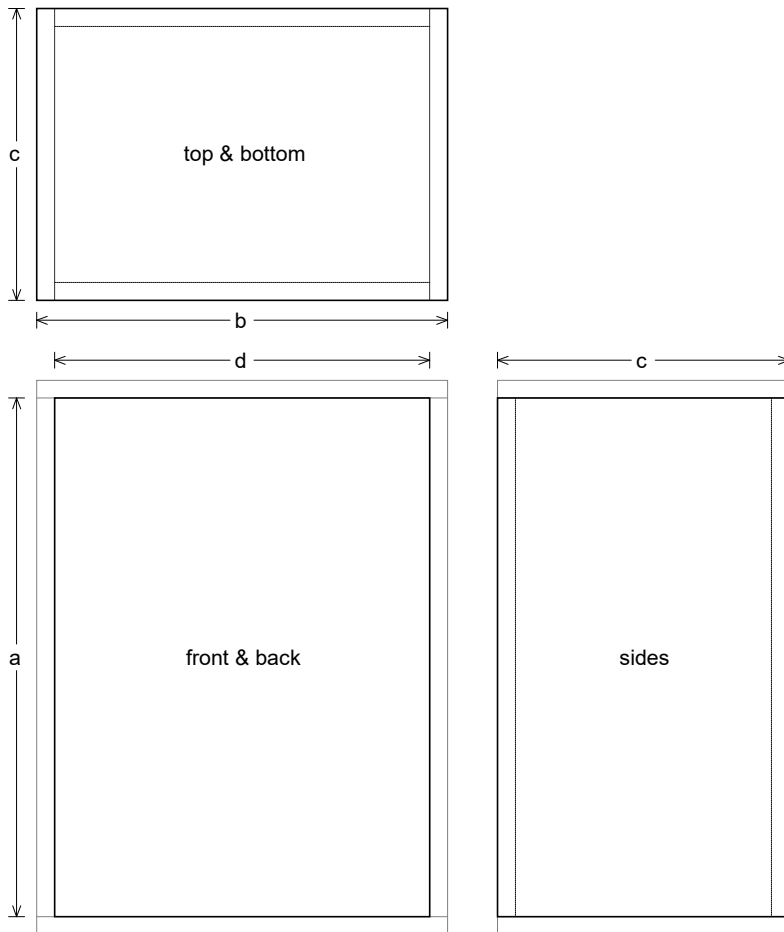
--Electromech. Parameters--

Qts = 0.39

no = 2.457 %

1-W SPL = 96.05 dB

2.83-V SPL = 97.68 dB



Box Parts

Box Shape: Square Prism

1 Top, 1 Bottom: depth (c) = 12.25 in
width (b) = 17.25, thickness = 0.75 in

1 Front, 1 Back: height (a) = 21.78 in
width (d) = 15.75, thickness = 0.75 in

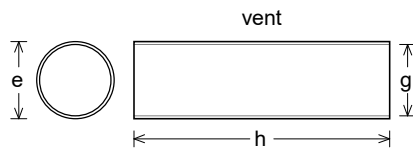
2 Sides: height (a) = 21.78 in
depth (c) = 12.25, thickness = 0.75 in

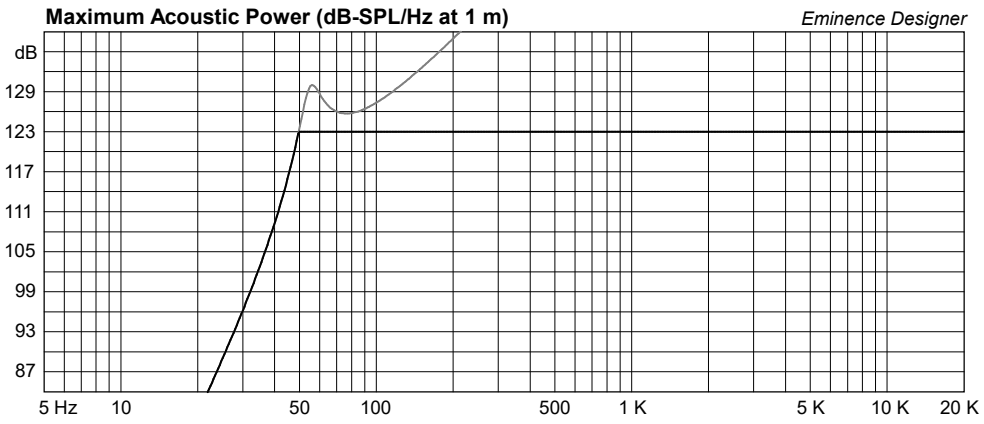
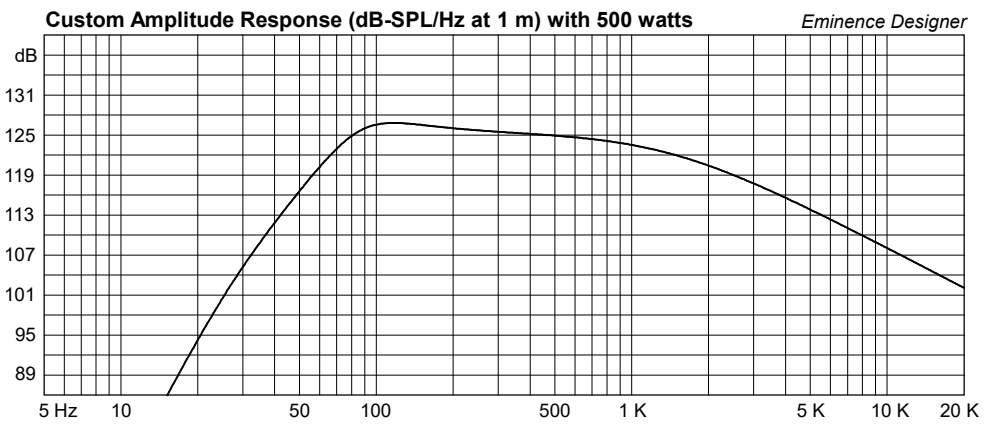
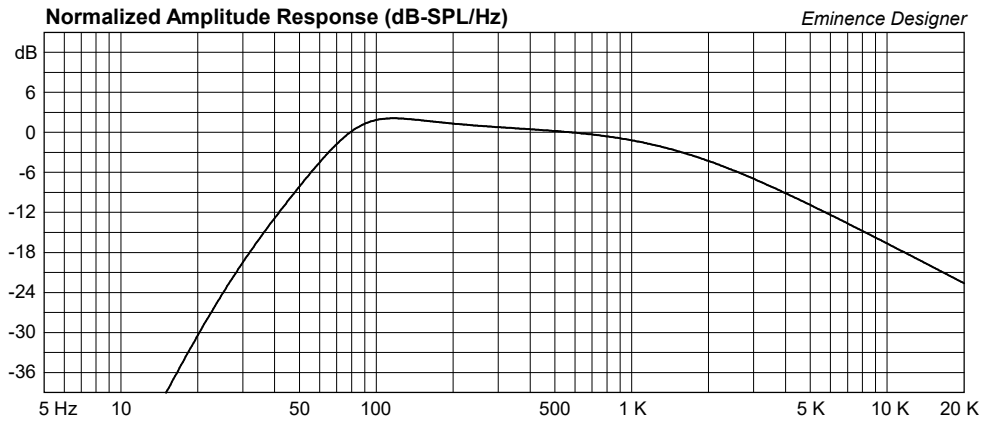
--Vent Parts--

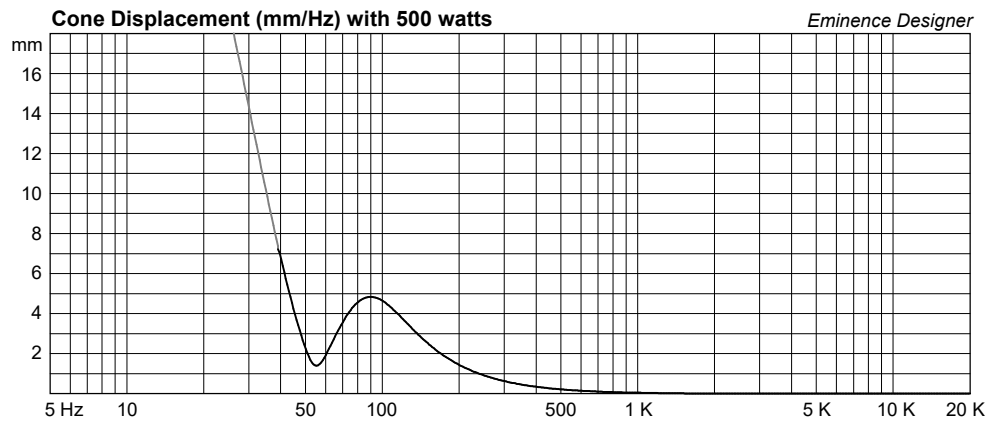
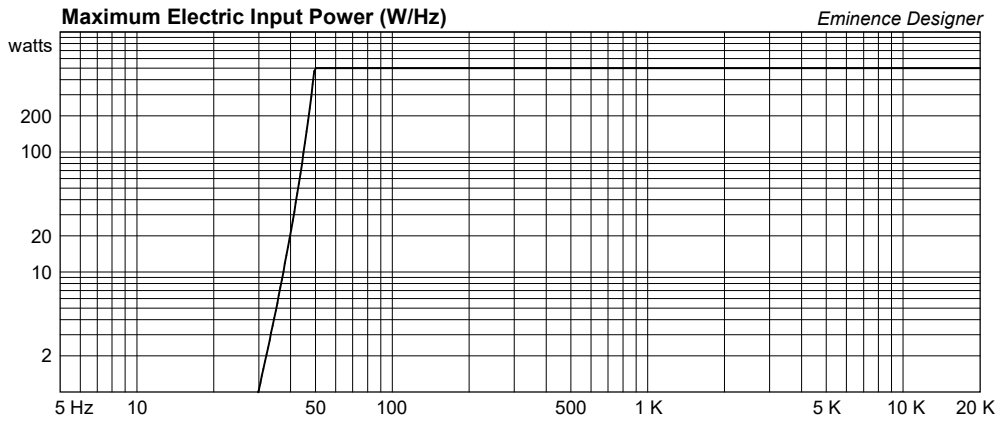
4 Ducts: outside diameter (e) = 3.25 in
inside diameter (g) = 3 in
length (h) = 10.73 in

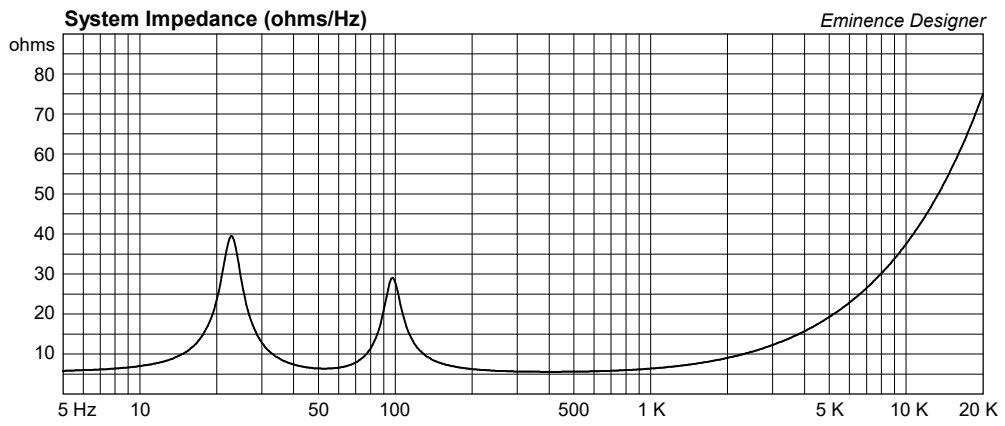
--Driver Mounting--

Mounting: Flush









CB3015N-8 Medium Vented Bass Guitar or PA

By Jerry McNutt, Eminence Speaker LLC
500 Watts F3 54 Hz



Box Properties

--Description--

Name:

Type: Vented Box

Shape: Prism, square (optimum)

--Box Parameters--

Vb = 2.75 cu.ft

V(total) = 3.068 cu.ft

Fb = 50 Hz

QL = 7

F3 = 54.15 Hz

Fill = minimal

--Vents--

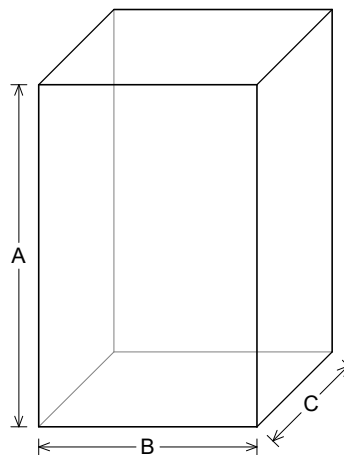
No. of Vents = 4

Vent shape = round

Vent ends = one flush

Dv = 3 in

Lv = 7.285 in



--External Dimensions--

A = 29.71 in

B = 18.94 in

C = 12.28 in

--Internal Dimensions--

A = 28.21 in

B = 17.44 in

C = 10.78 in

--Wall Thickness--

Front = 0.75 in

Side = 0.75 in

Driver Properties

--Description--

Name: CB3015N-8

Type: Standard one-way driver

Company: Eminence Speaker LLC

Comment: CannaBass 15" 500 Watt Bass Driver

--Configuration--

No. of Drivers = 1

--Mechanical Parameters--

Fs = 40.67 Hz

Qms = 3.6

Vas = 162.9 liters

Cms = 0.16 mm/N

Mms = 96.75 g

Rms = 6.86 kg/s

Xmax = 7.22 mm

Xmech = 14.2 mm

P-Dia = 328.3 mm

Sd = 856.3 sq.cm

P-Vd = 0.611 liters

--Electrical Parameters--

Qes = 0.43

Re = 5.5 ohms

Le = 0.59 mH

Z = 8 ohms

BL = 17.76 Tm

Pe = 500 watts

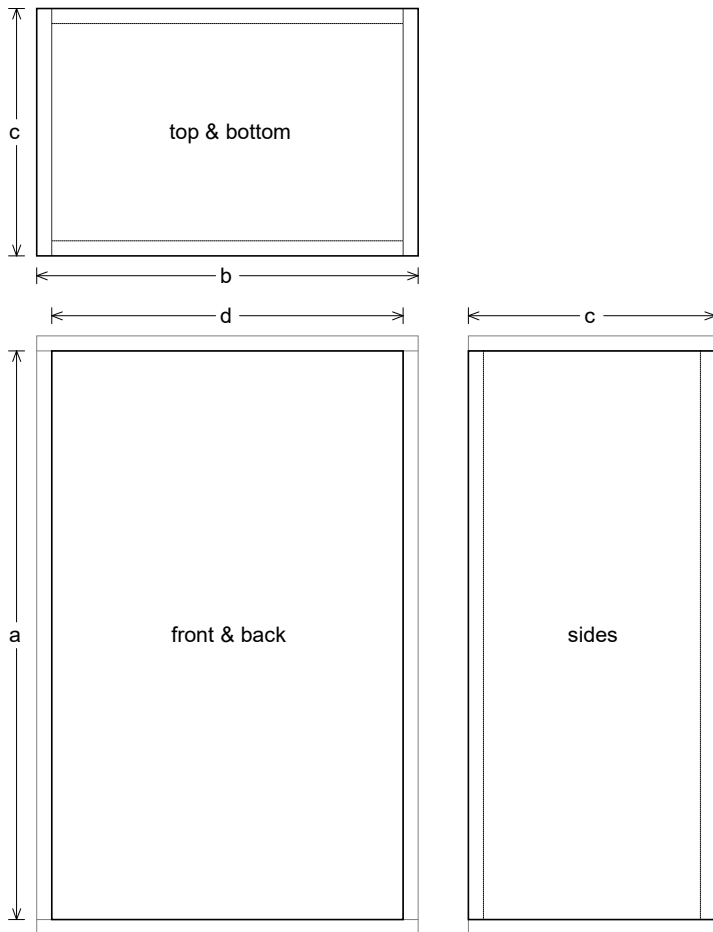
--Electromech. Parameters--

Qts = 0.39

no = 2.457 %

1-W SPL = 96.05 dB

2.83-V SPL = 97.68 dB



Box Parts

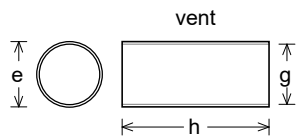
Box Shape: Optimum Square Prism
 1 Top, 1 Bottom: depth (c) = 12.28 in
 width (b) = 18.94, thickness = 0.75 in
 1 Front, 1 Back: height (a) = 28.21 in
 width (d) = 17.44, thickness = 0.75 in
 2 Sides: height (a) = 28.21 in
 depth (c) = 12.28, thickness = 0.75 in

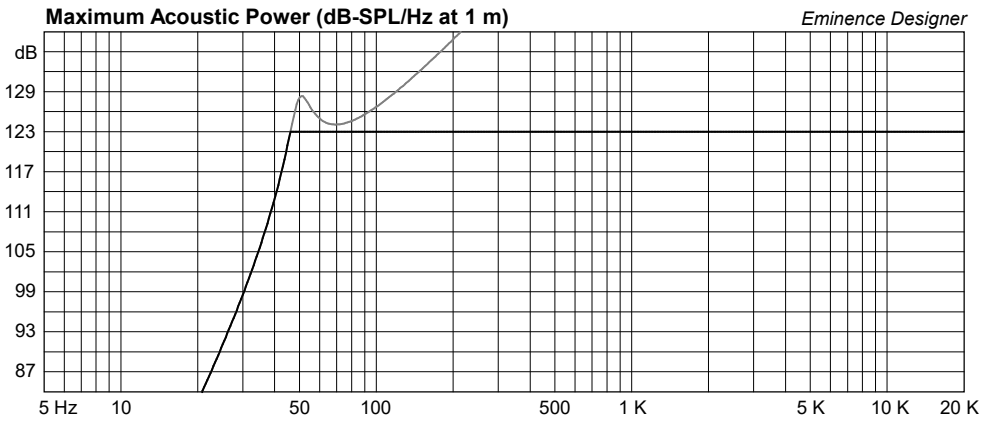
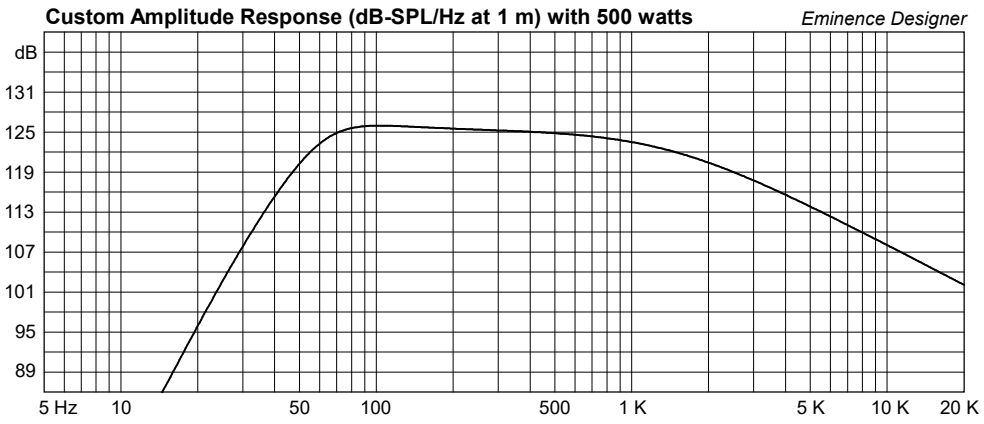
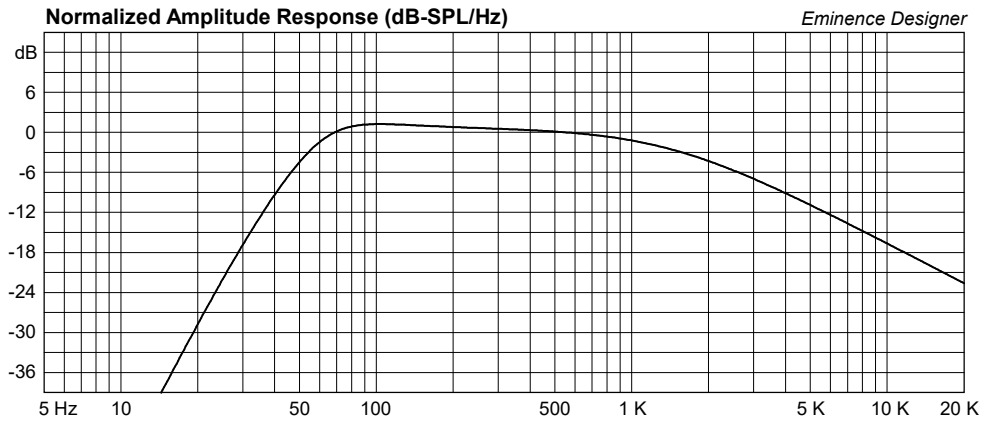
--Vent Parts--

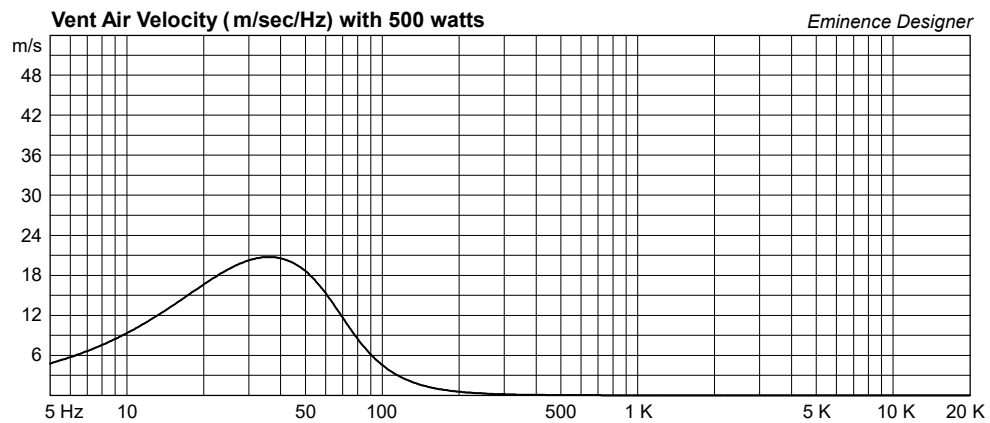
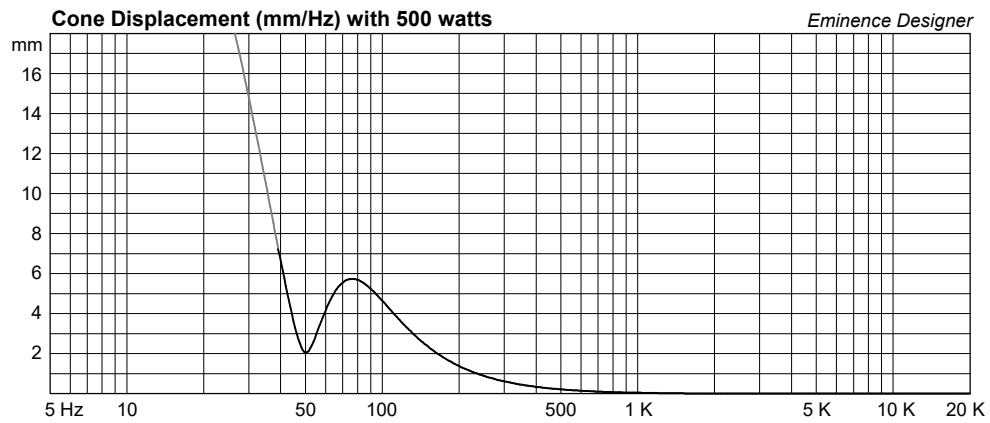
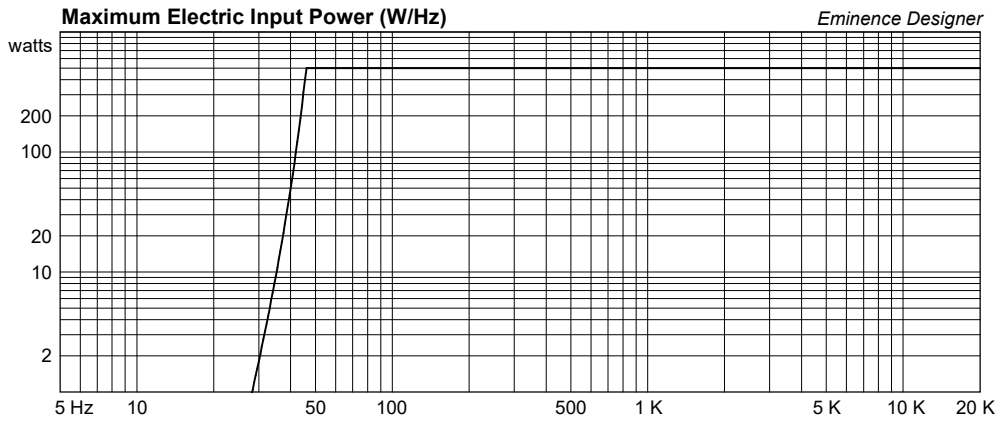
4 Ducts: outside diameter (e) = 3.25 in
 inside diameter (g) = 3 in
 length (h) = 7.285 in

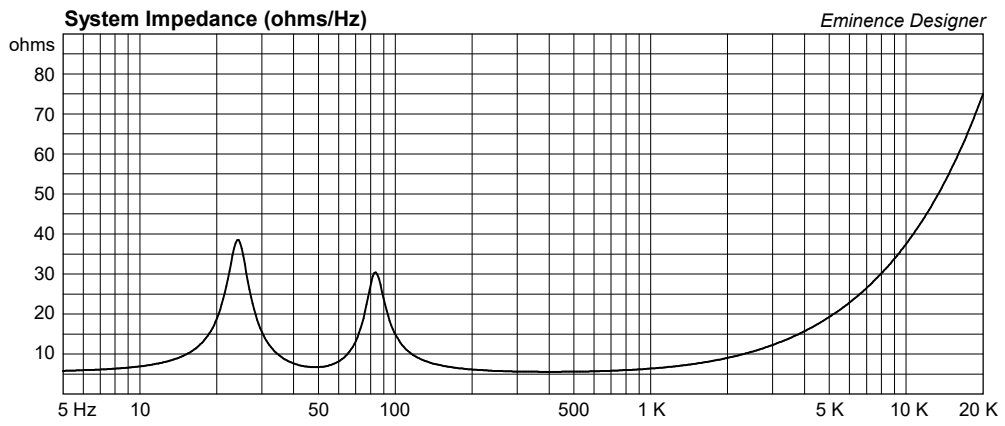
--Driver Mounting--

Mounting: Flush









CB3015N-8 Large Vented Bass Guitar or PA

By Jerry McNutt, Eminence Speaker LLC
500 W F3 47 Hz



Box Properties

--Description--

Name:

Type: Vented Box

Shape: Prism, square (optimum)

--Box Parameters--

Vb = 3.85 cu.ft

V(total) = 4.221 cu.ft

Fb = 47 Hz

QL = 7

F3 = 47.37 Hz

Fill = minimal

--Vents--

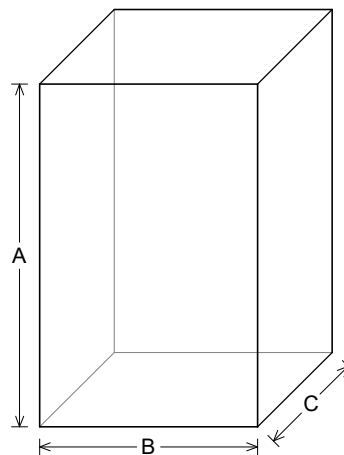
No. of Vents = 4

Vent shape = round

Vent ends = one flush

Dv = 3.5 in

Lv = 7.734 in



--External Dimensions--

A = 32.88 in

B = 20.89 in

C = 13.49 in

--Internal Dimensions--

A = 31.38 in

B = 19.39 in

C = 11.99 in

--Wall Thickness--

Front = 0.75 in

Side = 0.75 in

Driver Properties

--Description--

Name: CB3015N-8

Type: Standard one-way driver

Company: Eminence Speaker LLC

Comment: CannaBass 15" 500 Watt Bass Driver

--Configuration--

No. of Drivers = 1

--Mechanical Parameters--

Fs = 40.67 Hz

Qms = 3.6

Vas = 162.9 liters

Cms = 0.16 mm/N

Mms = 96.75 g

Rms = 6.86 kg/s

Xmax = 7.22 mm

Xmech = 14.2 mm

P-Dia = 328.3 mm

Sd = 856.3 sq.cm

P-Vd = 0.611 liters

--Electrical Parameters--

Qes = 0.43

Re = 5.5 ohms

Le = 0.59 mH

Z = 8 ohms

BL = 17.76 Tm

Pe = 500 watts

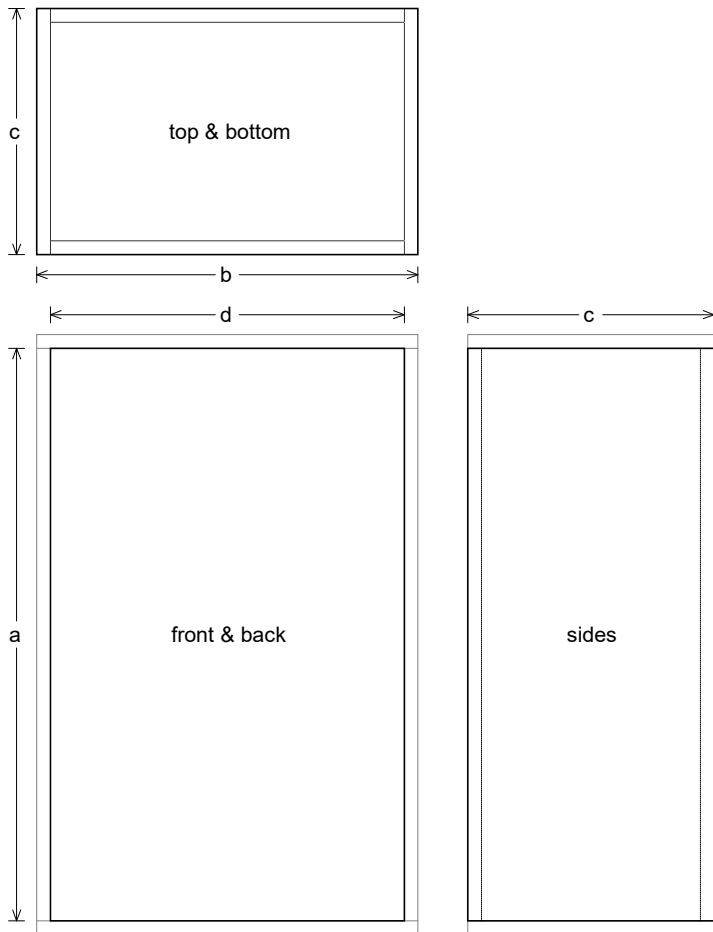
--Electromech. Parameters--

Qts = 0.39

no = 2.457 %

1-W SPL = 96.05 dB

2.83-V SPL = 97.68 dB



Box Parts

Box Shape: Optimum Square Prism
 1 Top, 1 Bottom: depth (c) = 13.49 in
 width (b) = 20.89, thickness = 0.75 in
 1 Front, 1 Back: height (a) = 31.38 in
 width (d) = 19.39, thickness = 0.75 in
 2 Sides: height (a) = 31.38 in
 depth (c) = 13.49, thickness = 0.75 in

--Vent Parts--

4 Ducts: outside diameter (e) = 3.75 in
 inside diameter (g) = 3.5 in
 length (h) = 7.734 in

--Driver Mounting--

Mounting: Flush

