



ADDINGTON CO MODULAR SHELF SYSTEM.

DOUBLE SHELF, OPEN WHITE

Care Guide: Avoid damp locations, to clean use a dry, or lightly damp cloth. Do not use harsh cleaning products. Assembly on a soft clean surface.

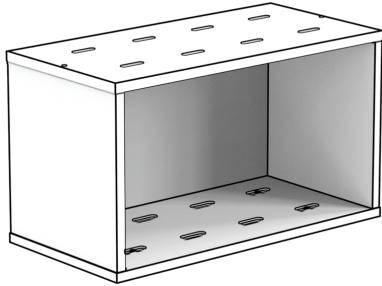


Scan for Animated Instructions

Nº A6002211

PART LIST

WWW.ADDINGTONCO.COM



4x Bolt M6 x 25mm



1x Allen Key



4x Nut M6



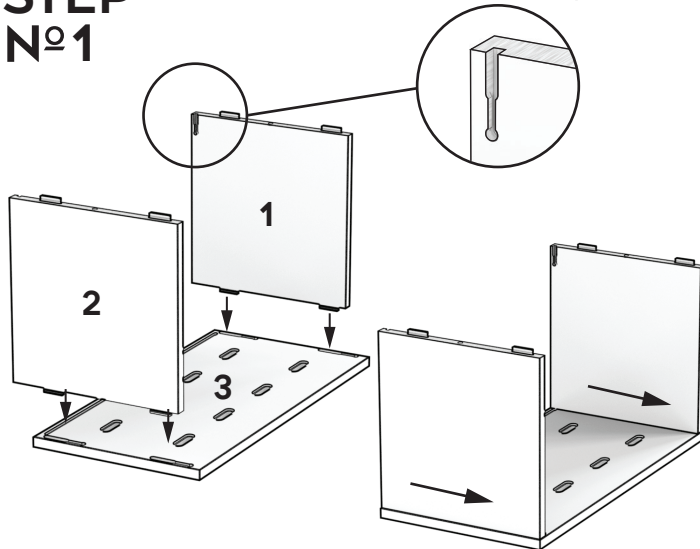
pre-installed
channel locks



2x Lock Button

STEP Nº1

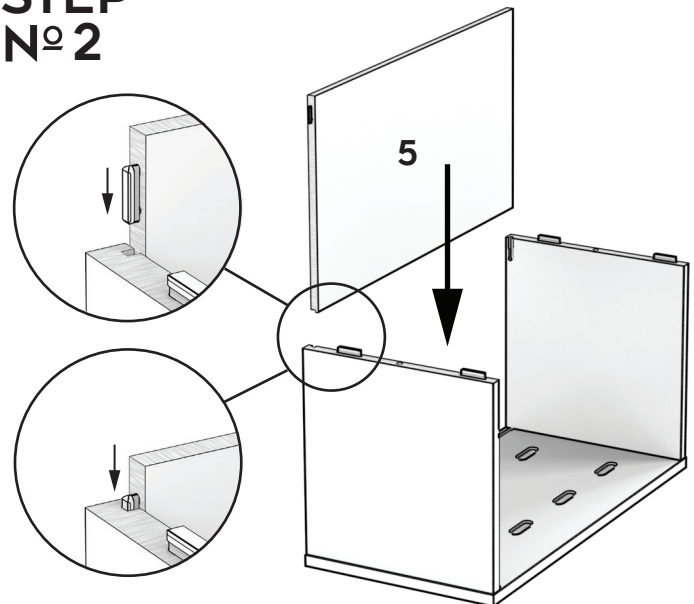
Slot side up



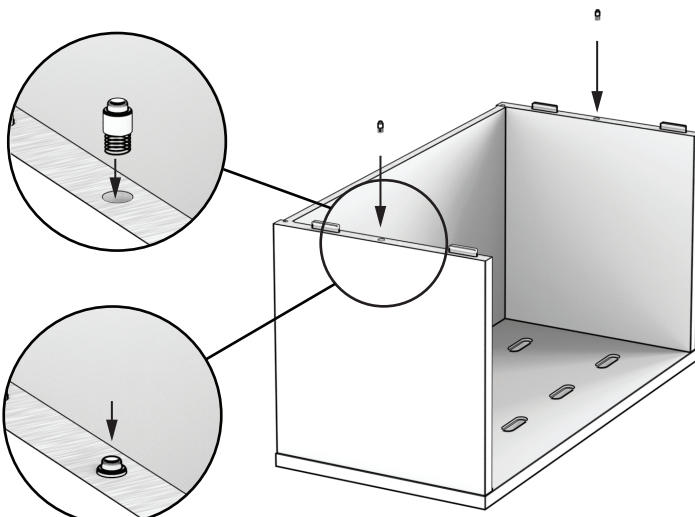
Insert channel locks into
keyhole slots.

Slide to lock.

STEP Nº2

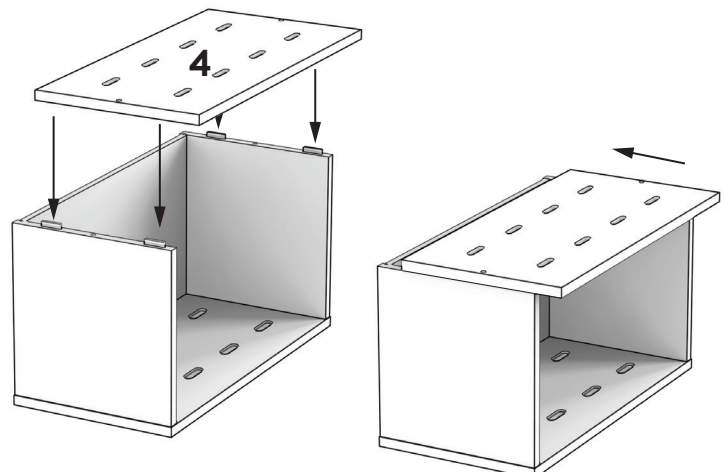


STEP Nº3



Install Lock Buttons.

STEP Nº4



Place top panel onto channel locks and
slide top into position.