



*setup & quick-start guide*  
SGTX1

*Use YouTube® for  
free karaoke tracks!*

*Party Bundle Documentation Update Notes*

*Release Date 3/21/17*

*This document serves as an update to the SGTX1 Setup Guide, Quick-Start Guide and Troubleshooting Guide, which were previously separate documents. A few important call outs:*

- *“MY VOICE” button on the Studio Effects Controller, which controls the effect skill level (Enhanced, SemiPro, Pro), is referred to as “SKILL LEVEL”, also reflected in the faceplate label. Functionality remains the same.*
- *The Studio Effects Controller I/O labels (inputs/outputs) in the diagram may appear slightly different than your actual unit. The changes were made to further clarify & describe each I/O in greater detail to novice users. Position and functionality of all I/Os remain unchanged.*
- *“Live/Instrument Mode” information is included. For the full Live/Instrument Mode guide, please go to [singtrix.com](http://singtrix.com) (Videos, Guides, FAQs etc) for additional instructions and information for advance users.*

# Singtrix®

## setup & quick-start guide SGTX1

Use YouTube® for  
free karaoke tracks!



**A**  
Studio  
136-5503



**B**  
2 Double Sided Studio Inserts  
(4 colors)  
132-7899  
132-7900



**C**  
Studio Power Cable  
112-4337



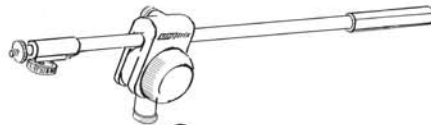
**D**  
Device Holder  
172-0280



**E**  
Mic (Microphone)  
136-5504



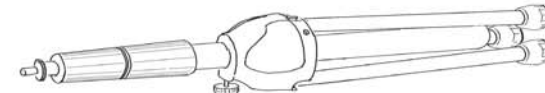
**F**  
Mic Holder  
172-0281



**G**  
Boom Arm  
136-5506



**H**  
Studio Holder  
172-0282



**I**  
Stand  
136-5505



**J**  
Small Plastic Clip  
172-0283



**K**  
Large Plastic Clips (2)  
172-0295



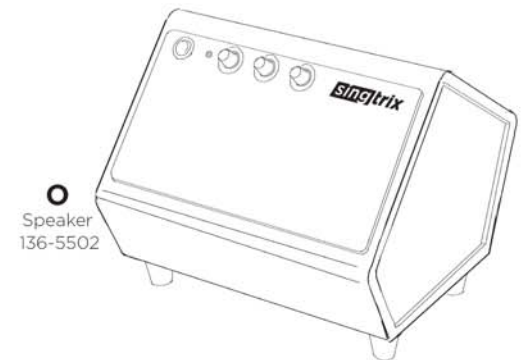
**L**  
Speaker Audio Cable  
112-4334



**M**  
3.5mm Audio Cable  
112-4342



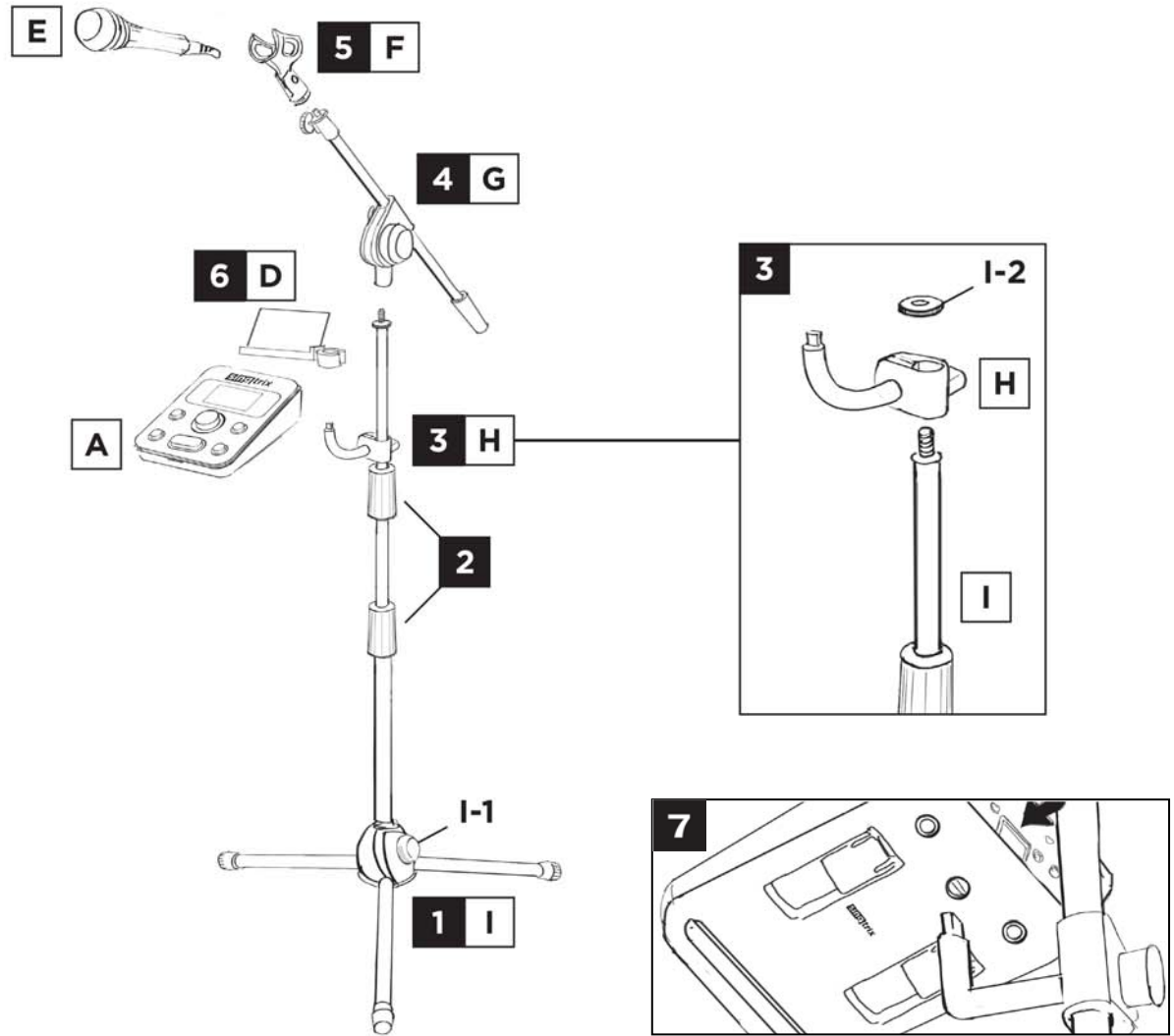
**N**  
Speaker Power Cable  
and AC Adapter  
112-4333



**O**  
Speaker  
136-5502

welcome to the Singtrix family

Fig-1



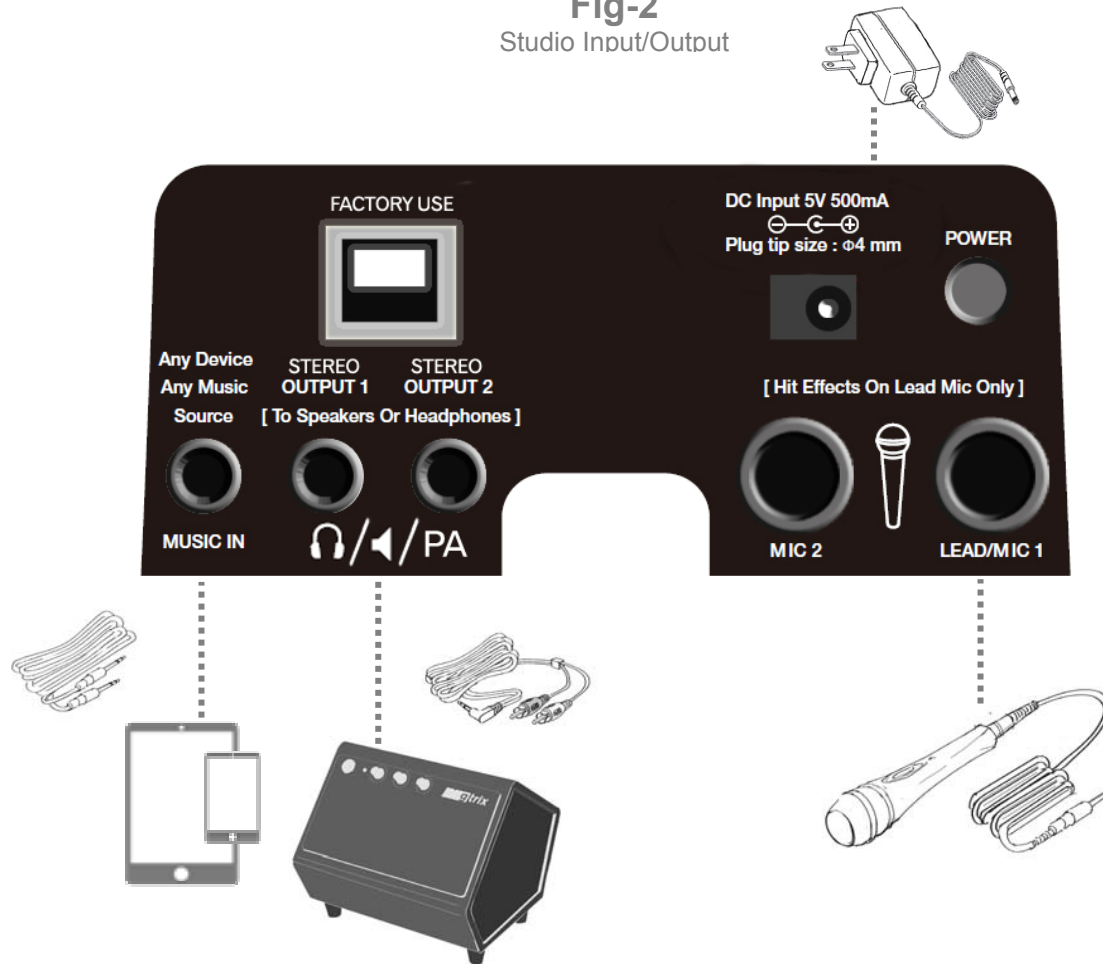
### Setup: Assemble

- 1) Extend the bottom legs on stand **(I)** and twist knob **(I-1)** to lock in place.
- 2) Twist handles on stand. Fully extend both sections, adjusting for preferred height, and tighten handles. NOTE: Leave a minimum of 8 inches extended at the top for device holder **(D)**.
- 3) Unscrew washer **(I-2)** from top of stand. Slide studio holder **(H)** onto stand with hook pointed upward and twist knob to lock in place. Screw washer back onto top of stand.
- 4) Screw boom arm **(G)** onto top of stand.
- 5) Screw mic holder **(F)** onto end of boom arm **(G)**.
- 6) Snap device holder **(D)** onto stand **(I)**.
- 7) Holding the unlock button on back of studio, snap studio **(A)** to studio holder **(H)** until a click is heard which means the studio is locked. Lift up on the studio to make sure it is securely in place.

## Setup: Making Connections

- 1) As per Fig-1 below, plug **Mic (E)** into "LEAD/MIC 1" input. MIC 2 input can be used for a 2nd mic and has basic effects including reverb & delay with no hit feature or pitch-correction.
- 2) Plug the **3.5mm Audio Cable (M)** into "MUSIC IN". Plug the other end into your tablet, smartphone or other music device (see list of device options in following section). Singtrix tunes your voice & harmonies to the music played. In place of karaoke music from your device, you can plug in an instrument such as a guitar or keyboard (see "Live Mode" section for more details).
- 3) Plug the 3.5mm end of the **Speaker Audio Cable (L)** into "OUTPUT 1" or "OUTPUT 2". Note: make sure the plugs are fully inserted to prevent hum. Plug opposite end with RCA connectors into "L/R MUSIC INPUT on the **Speaker (O)**".
- 4) Plug **Studio Power Adapter (C)** into "DC IN" on Studio.
- 5) Plug **Speaker Power Adapter (N)** into "DC IN" on speaker.

**Fig-2**  
Studio Input/Output

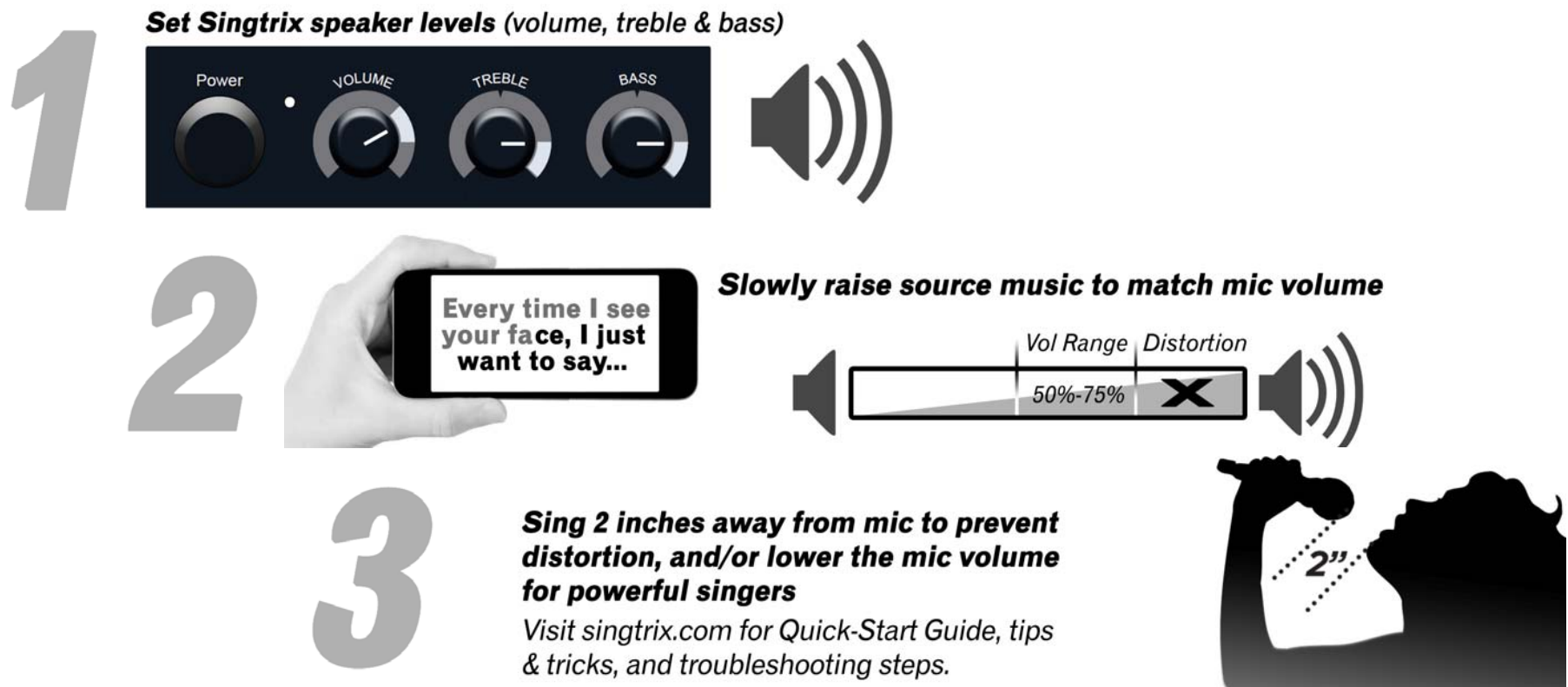


## Quick Start: Power Up, Level Adjustment & Sound Check

- 1) Turn on Studio power switch located on the back.
- 2) Turn on Speaker & set volume to 2 o'clock, treble & bass to 3 o'clock.  
TIP: Want to hear our amazing effects shine in true stereo, try Singtrix with headphones into our stereo output. Great for quiet practice sessions.
- 3) Sing into mic and check that volume level is adequate and optimal. The system and mic are sensitive for effortless singing. Screaming can distort the sound. For the best performance, sing 2" away from the mic and never cup your hand around the mic screen. Singing with your mouth on the mic screen or holding the mic screen will cause distortion. The system and mic are sensitive for effortless singing. For loud singers, sing further away or turn down the mic gain.
- 4) Turn your tablet or other music device volume down to 20% and start playing a karaoke song. TIP: Check out FREE YouTube® karaoke videos. Search "karaoke" and the name of a song, artist, lyric or genre for access to thousands of karaoke tracks. Create playlists on YouTube®. Singtrix YouTube® channel has playlists covering every genre of music including Pop, Rock, Country, Hip Hop, Kids Pop Hits etc. Always select highest quality playback for YouTube® videos.
- 5) For sound check, set the Studio to Preset 1) BIG TRIO.
- 6) Sing into the mic while music is playing, and slowly raise your music device volume until your vocals are evenly mixed with the music.
- 7) Press the "HIT" button on the mic during the chorus of the song to kick in live vocal harmonies and other cool effects.

Fig-3

For Best Sound & Optimal Performance



## Quick Start: Any Music, Any Device

Singtrix open platform allows you to use a variety of sources for music content & music devices. The music device you use must have a headphone or line level analog output. Singtrix will tune your voice & live harmonies to the music played. TIP: when using karaoke apps, the 3.5 mm jack may activate on your device's onboard microphone. All mics must be disabled on your music device to prevent feedback. Only the Singtrix Mic should be used.

Device Options with line level or headphone outputs	
1	Smart Phones
2	Tablets
3	Computers
4	Smart TVs – must have analog output
5	CD Players
6	Karaoke players

Music Content Options standard music & karaoke	
1	YouTube® Karaoke Videos or Original Lyric Videos
2	MP3s
3	Music Streaming Apps
4	Karaoke Apps (for music content only)
5	Your own compositions & music recordings
6	Guitar (refer to Live Mode)
7	Keyboard (refer to Live Mode)

## Quick Start: Navigating the Studio Console & Effects Presets

Fig-4



- **Effects Preset Guide** go to Singtrix.com for our comprehensive guides and preset/song reference list
- **Navigating** Spin the dial quickly to jump 50-100 effects at a time. Use the preset list as reference.
- **Favorites Presets** Singtrix comes with hundreds of preset effects. Save your top 10 favorites by pressing and holding the Mic Volume button for 10 seconds.
- **Universal Presets** are versatile, best for beginners, and sounds great with any type of music. Some universal effects presets are styled to match certain genres of music e.g. country, rock, hip hop, or big pop sounds. Effects named "TUNED" offers the most pitch-correction.
- **Extreme Presets** offer dozens of transformative effects. Want to sing like a Robot? Pixies or famous baritones? Singtrix has you covered. Tip: Get the family singing favorite holiday songs with "Choir

### Quick Start: Using the Effects Presets

- **Where to Start** begin with preset 1 "Big Trio". TIP: presets 1-8 are the easiest for beginners and sound good with most songs. Effects named "TUNED" offers the most pitch-correction.
- **Skill Levels** enhanced, semi-pro, and pro levels determine the amount of overall effects levels & pitch-correction. As your singing naturally improves, switch to the semi-pro or pro.
- **HIT Effect** each preset has its own "HIT" effect." Press the HIT button on the mic or studio to supercharge the vocal effect. Use it to accent certain words or sections in a song, like a chorus or bridge.
- **Distance From Mic** Singtrix works best when you sing about 2 inches away from the mic. The microphone is sensitive so there's no need to strain your voice. Singing too close or too loud will cause distortion. However, a good strong voice distanced properly from the mic ensures the best overall sound. TIP: do not cup the mic screen.
- **Commit To The Performance!** Don't just "talk" into the mic, you have to attempt to sing & try to hit those notes. Depending on preset settings, Singtrix will do 30%-70% of the "work" and you have to do the rest. When using presets with more "natural pitch correction",

### Quick Start: Live Mode / Instrument Mode

In place of standard music or karaoke tracks, you can use an instrument such as a guitar or music keyboard. Singtrix will tune your voice to the chords played on your instrument.

- **Set to Live Mode** by simultaneously pressing the Song Voice and Skill Level buttons for 5-10 Seconds. Live mode eliminates latency used by the system to analyze full spectrum music (music with multiple instruments, percussion and other sounds). Latency will cause the chord played on your instrument to be delayed before it is heard out of the speaker connected to the Studio speaker output. This will prevent playing out of sync.
- **Signal Chain** All inputs and outputs must follow the signal flow diagram in the Fig-5, especially when integrating other equipment including music instruments, microphones and speaker PA systems. Audio plug adapters may be required for your specific equipment.

Singers" and create a new tradition together. Try "announcements", and sound like a sportscaster. Try "ventriloquist" and sound like a puppeteer using the "HIT" button to toggle between 2 voices. "Scary" is a perfect effect for Halloween pranks. Hide the speaker by the door or window and scare an unsuspecting "trick-or-treater".

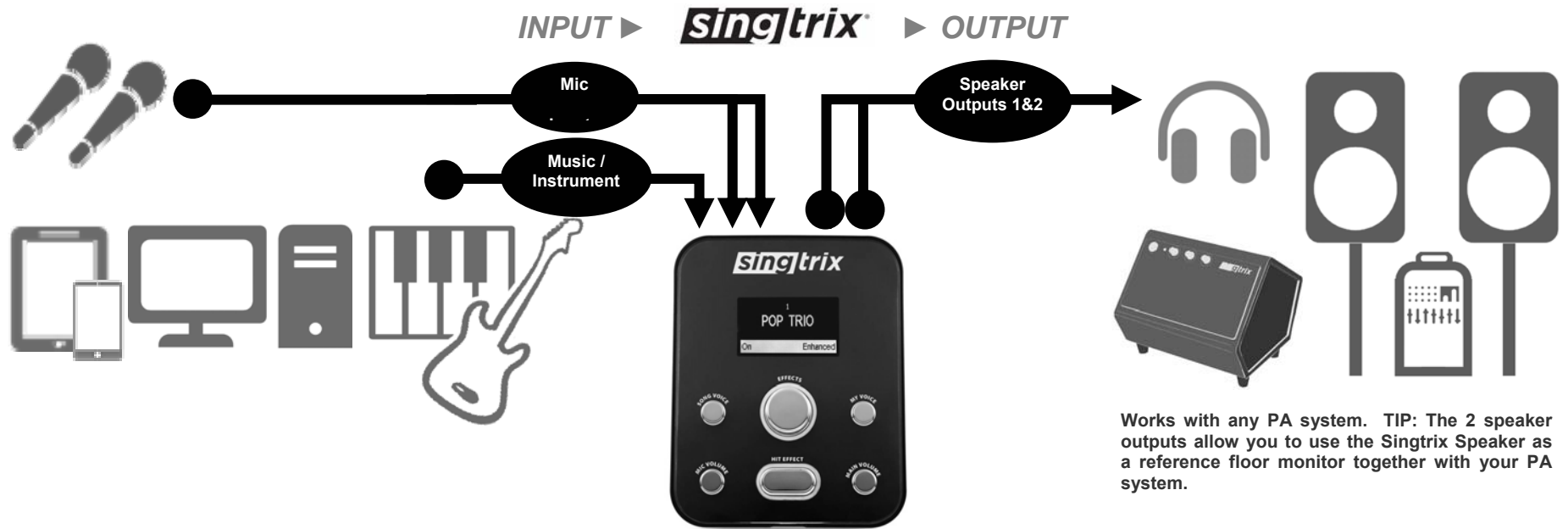
- **Song Presets** are a series of custom designed presets to best match the vocal style of some classic karaoke favorites. Some song presets can be difficult for beginners
- **Be Creative!** There is no right and wrong way to use Singtrix effects. People have different abilities, range, musical tastes and styles. Experiment, have fun and use what works for you and your voice. Many users will only use a handful of presets for an entire session of singing.

Singtrix acts like training wheels for your voice helping you improve naturally.

- **The Speaker Faces the Singer** for proper monitoring. This allows you to monitor the fidelity of your voice and helps prevent you from straining or screaming into the mic, which will distort the sound. TIP: for best performance place behind the singer when performing to an audience so that everyone is in line with the speaker.
- **Practice Makes Perfect** The more you sing, the more comfortable and confident you will be. Singtrix is a tool and practicing will help you learn how to use it to make you sound your best. TIP: always warm up and hydrate before and during singing sessions.
- **Record a Video** to gauge any improvements you've made. Post your recordings for family and friends on YouTube®. Send us a link of your best performances and we'll add your video to our YouTube® Friends & Fans play.

- **Other Microphones** Singtrix mics are specifically tuned to be sensitive and louder than other mics. When using other mic systems (i.e. wireless), it is important to that it has a separate microphone gain/volume adjustment to raise the mic volume independently from the volume on the Studio Effects Console.

**Fig-5**  
Singtrix Signal Chain for Advanced Users



Works with any PA system. TIP: The 2 speaker outputs allow you to use the Singtrix Speaker as a reference floor monitor together with your PA system.

## Welcome to the Singtrix family!

### A quick note from the Singtrix Team...

Before going further, we want to THANK YOU for your purchase and support! We hope Singtrix inspires you to sing, share your love of music with family & friends, and create unforgettable memories at every party event.

**Singtrix advanced live vocal effects** offers the same technology used by pro musicians to create a "concert" experience in your own home. The more you use it, the better you will sound. And like any tool, you will learn the subtleties of each effect and develop your own preferences that compliment your individual voice so you sound your best.

**Want more fun?** Add our Singtrix mic with exclusive "HIT" effect control, party light, mic stands, additional speaker and other accessories available at [singtrix.com](http://singtrix.com).





*Use YouTube® for  
free karaoke tracks!*

*FAQ / user tips & tricks*

---

## ABOUT SINGTRIX®

### **What is Singtrix? How does it compare to other karaoke systems?**

Singtrix is the world's only plug-and-play karaoke system that uses studio quality vocal effects designed to make "bad singers sound good and good singers sound amazing!" Sing in-tune to your favorite hits with confidence. Just plug into the headphone output of your mobile device or computer and start singing. Singtrix will tune your voice to the music track and add studio quality effects such as 4-part harmony or choir, reverb, delay and so much more.

#### **Singtrix Highlights**

- The simple plug and play system is powered by patented state-of-the-art professional live vocal effects technology
- No need to pay for music content since it was designed to work with the thousands of FREE YouTube® Karaoke videos readily available online & posted by 3<sup>rd</sup> party publishers.
- Works with your existing mp3 music, apps and more.
- Voice-cancellation option lowers existing vocal track from standard songs creating "karaoke tracks on-the-fly".
- For all skill levels from beginner to pro
- For all musical tastes. Singtrix effects cover every genre & generation of music.
- Works with instruments in place of karaoke tracks, tuning your voice to chords played on your guitar or keyboard
- The natural tuning effects act like training wheels for your voice and can help improve your singing.
- Reduces vocal fatigue and strain, making singing effortless for longer practice sessions.
- The entire Singtrix system including Studio Effects Console, Mic and 2.1 Speaker are specifically tuned and designed to provide studio quality sound, making the singing experience exciting, fun and transformative

#### **Nothing Compares**

- Other karaoke systems are glorified speakers with mics
- Typical low-end systems are cheap, have poor sound quality, low volume, not loud enough for large parties, break easily, requires expensive karaoke discs for music, low quality mic and speaker, do not offer vocal enhancement
- Typical high-end systems with louder speakers are expensive, do not offer vocal enhancement, have complicated interfaces, and require expensive karaoke music content

## SINGTRIX PARTY BUNDLE

### What comes in the Singtrix Family Bundle?

The Singtrix Premium Performance Bundle SGTX1 includes the award-winning Studio Effects Console, high-fidelity Singtrix Mic with custom "HIT" button, powerful 40-watt 2.1 stereo speaker system with built-in subwoofer (which doubles as a multimedia speaker system for movies & gaming), device holder for tablet or other mobile device, mic stand with boom arm, cables and other accessories. Additional Mic, Mic Stand, Party Lights & other accessories are available for individual purchase.

### What are the system specs of the components?

#### The Singtrix Studio Effects Console

- Music Input – balanced 1/8" mini stereo jack (3.5mm)
- Speaker Output 1 & 2 – balanced 1/8" mini stereo jack (3.5mm)
- Mic input 1 & 2 – 1/4" phono jack (mic 1 becomes the lead mic when both inputs used)

#### Singtrix Microphone with Built-in HIT Button

- Unique HIT control button
- Dynamic HyperCardoid
- Impedance: is 600+/-3% ohms at 1KHz
- Output Level (at 1KHz): -52dBV +/-4dB at 1KHz/Pa (1.99mV) – 1 Pa = 94 dB SPL

#### Singtrix 2.1 Speaker

- 40 Watt Amplifier with Volume, Treble & Bass controls
- 3" Left & Right Mid/High Range Stereo Speakers: 200Hz to 20KHz
- Built-in Subwoofer 20Hz to 100Hz, Size 5.25"
- Signal Input: Left & Right RCA connectors
- Weight: 5Kg

- Weight: 440g
- Dimensions: L-7.25" x W-5.75" x H-2.25"
- Power Input: 5V 250mA Studio AC Power Supply
- Input 100-240V, 50/60Hz 0.2A; Output 5V, 1000mA

- Frequency Response: 60 Hz -15kHz
- Comes with attached mic cable
- 1/4" phono connector plug (tip/sleeve/ring)
- Weight: 470g
- Dimensions: L-10" x W-2" x H-2"

- Dimensions: L-12" x W-13" x H-11"
- DC input 18V, 2.8 Amps
- Speaker AC Power Supply - Input 100-240V, 50/60Hz 1.2A; Output 18V, 2800mA 15

## KARAOKE MUSIC AND LYRICS

### Where do I get music and lyrics content?

Get FREE Karaoke Videos and original lyric videos on YouTube® from 3<sup>rd</sup> party publishers. Check out the Singtrix YouTube channel for instant access to a variety of playlists covering all the popular genres of music. Thousands of popular hits in each playlist for FREE. Use any one of our Singtrix playlists to create your own custom playlists. Note: Singtrix does not publish its own karaoke content, nor does it guarantee availability & quality of YouTube® content or services.

Singtrix karaoke machine requires a separate device to provide: Music, analog audio signal needed to establish a KEY for tuning and harmony effects, Screen for lyrics. You can use almost any device with an analog headphone output. Singtrix requires a 3.5mm stereo connection. Many devices such as smart phones, laptops and tablets have both an audio output as well as screen for playing karaoke videos which have lyrics. From your device you can access music & karaoke apps and other services. Most customers use YouTube® for free karaoke video tracks. In the YouTube® search, just enter "karaoke" plus name of any song or artist right. Singtrix® has its own YouTube® Channel with Karaoke YouTube® Playlists for your convenience. You can also use standard songs from your current music library. In fact, a basic CD player will work as your music audio source.

With standard songs you are able to lower the song vocals using our SONG VOICE feature. With Singtrix, you are not stuck with any specific app, operating system or music format.

## THE EFFECTS

### What is an effects preset?

A preset is a customized formulation of our individual vocal effects working together to produce a cool vocal sound. Some presets will have more or less of a specific type of effect. This holds true for pitch-correction. Some presets will emulate current artists who utilize hard-tune effects that intentionally sound "robotic". Other presets will be geared towards more natural or subtle tuning. Experiment and refer to the preset booklet for the presets that suit you and your song choices.

In addition, each preset has an "enhanced", "semi-pro" and "pro" setting that can be adjusted using the SKILL LEVEL / MY VOICE button. "Enhanced" will have the highest level of effects and pitch-correction. Use the Effects Dial to select your preset effects. Quickly spin the dial left or right to jump 100 presets at a time.

Go to [singtrix.com](http://singtrix.com) for our Preset List & Guide & Song FX Reference List

### What individual effects are used in an effects preset?

The following is a list of individual effects that may be combined & formulated to make a single Singtrix Effect Preset:

- Thicken
- Tube
- Rotor
- Panner
- Flanger
- Wah-Wah
- Chorus
- (18) Delays
- (13) Delay Filters
- (28) Reverbs
- (10) Doubling
- (25) Harmony
- (7) Hard Tune™ or Pitch-Correction
- Voice & Gender-Morphing
- Megaphone
- Radio
- Telephone
- Overdrive
- Distortions & Other Tone Filters

### What else do I need to know about effects presets?

"Favorites" and "Universal" presets are conveniently located at the front of the list. You can save your own top 10 favorites for quick access. "Universal" presets are a MUST for beginners with the first few effects being the most versatile. They are designed to sound great with most songs and are perfect for parties and events. One or two universal presets can be used for an entire night of karaoke without having to change. Adjusting the SKILL LEVEL setting offers a wide range of options for party guests with varying abilities and tastes.

"Extreme" presets offer fun voice-morphing options like gender-bending, character voices and instrument simulation. Some are more novel, while others can be musical and used with karaoke tracks. We encourage you to experiment and have fun!

"Song" presets are effect combinations in the style of your favorite songs & artists. Some song presets can be more difficult for beginners so a universal preset may be a better choice in some cases. Song presets will sound great with certain songs so experiment.

Use the Effects Dial to select your preset effects. Quickly spin the dial left or right to jump 50-100 presets at a time. Remember there is no right or wrong preset to use. We understand that everyone has their own unique preference and taste. We made sure there were enough options for everyone! Experimenting and trying different combinations is half the fun and an important part of your Singtrix journey.

### What preset should I use when I need little or no effect?

- Use any of the presets with "Pro" in the name (e.g. Pro Trio etc.), less overall effects levels & pitch-correction.
- Lower amount of overall effects by switching the SKILL LEVEL / MY VOICE setting from "Enhanced" to "Pro".
- Try Preset - Dry vs Singtrix.
- Try a blank preset at the end of the list.
- When (2) mics are plugged in, Mic input 2 offers no pitch-correction or harmonies inherent in the selected preset. The selected preset still offers the other individual effects.
- Don't forget these fun authentic sounding announcer Presets (Announcements, Arena Announcer) for MC and speaking applications.

### What effects are best for my voice?

Children and females typically have higher voices and can sound best using a lower harmony or standard harmony presets like a "TRIO". "HI TRIO" effects can sound best

with a singer with a lower voice or a song that is sung in a low key. Tuned effects are “hard tuned” so they sound similar to an AutoTune® sound. Effects named “TUNED” offer the most pitch-correction and overall vocal enhancements making it easier for beginners to sing.

**Singtrix Recommends Trying these Effects Presets** (see our comprehensive preset guide at [singtrix.com](http://singtrix.com))

PRESET	DESCRIPTION / TIPS
BIG TRIO HI TRIO	Great for Beginners. Offers 3 part harmonies & the most tuning without sounding too robotic. Offers approx 75% pitch-correction and other effects to enhance your voice. HI TRIO complements deeper voices adding high harmonies to cut through a song. High harmonies allows you to sing the lower notes in order to hit the high harmonies  BIG TRIO Harmony Structure: 1 low / (HIT) 1 low and 1 high HI TRIO Harmony Structure: 1 low / (HIT) 1 high and 1 higher
TUNED TRIO TUNED DIVAS	Great for Beginners. Effects with prefix “TUNED___” offers 80-90+% pitch-correction similar to AutoTune®.  TUNED TRIO Harmony Structure: 1 low / (HIT) 1 low & 1 high TUNED DIVAS Harmony Structure: 1 low / (HIT) 1 high & 1 higher
LOWER TRIO	The HIT effect complements very high pitched voices with lower harmonies for a fuller & more defined sound.  LOWER TRIO Harmony Structure: 1 high / (HIT) 1 low & 1 lower
PRO TRIO SEMIPRO TRIO	Least amount of pitch correction. HIT effect offers big harmonies. Effects with prefix “SEMI PRO___” offers slightly more pitch-correction (10%-25%) than “PRO”.  PRO TRIO Harmony Structure: 1 low / (HIT) 1 low & 1 high SEMIPRO TRIO Harmony Structure: 1 low / (HIT) 1 low & 1 high
DIRTY TRIO	Distorted megaphone effect. HIT effect offers non-distorted 3 part Harmony.  PRO TRIO Harmony Structure: 1 low / (HIT) 1 low & 1 high
MOTOWN CITY	Features “velvety” reverbs & delay perfect for that classic Soul, R&B and disco sound.  PRO TRIO Harmony Structure: 1 low / (HIT) 1 low & 1 high
COUNTRY TRIO COWBOY CHOIR	Effects with prefix “COUNTRY___” or “COWBOY___” features signature reverb with little or no delay stylized for this genre, but sounds great with other types of music where you need a “crisper” sound.  COWBOY CHOIR Harmony Structure: 1 high / (HIT) 1 low & 1 high & high/low octaves

PRESET	DESCRIPTION / TIPS
ROCKABILLY	Features a signature slap back delay sound with little or no reverb
BOLLYWOOD ASIA TRADITION	Good for traditional non-Western music & exotic keys. No pitch-correction.  BOLLYWOOD Harmony Structure: octave Up / (HIT) Octaves & 5ths ASIA TRADITION Harmony Structure: octave Up/ (HIT) High & Low octaves
CHOIR SINGERS SUPERGROUP 60'S FOLK	Features Big 4-Part Harmonies and variation of other effects including pitch-correction. Sounds great when using your natural voice or high falsetto. For best results singing in a higher register. Perfect for singing Christmas/holiday songs.
GUITAR SOLO	Sound just like a guitar or keyboard without ever learning to play an instrument, by
BARRY TONE	Features voice-morphing that lowers the pitch of your voice for a classic baritone sound. Press the SKILL LEVEL button to lower your voice even more.
TINKA BELL	Features voice-morphing that raises the pitch of your voice. Emulate some of your favorite characters from TV and film.
PRANK CALLER VENTRILOQUIST	Voice-morphing on the fly to sound like different people. Great for puppeteer and ventriloquist acts, use the “HIT” button to toggle between 2 voices.
SCARY	A fun Extreme effect, perfect effect for Halloween pranks. Hide the speaker by the door or window and scare an unsuspecting “trick-or-treater”.
MALE TO FEMALE FEMALE TO MALE	Features gender-bending pitch-shifting effects so a man can sound like a woman or woman sound like a man. The HIT effect boosts amount of pitch-shifting.
ARENA ANNOUNCER	For authentic MC and speaking applications. HIT effect toggles between an authentic racetrack announcer voice and a big stadium voice.
BLANK DRY VS SINGTRIX	No effects. Located at the end of the preset list. Just spin the dial quickly (100+ effects) to jump to the last preset.

### Can I sing without pitch-correction or harmony effects?

Bypass all key related effects such as pitch-correction and harmony by plugging in (2) mics and using the mic plugged into “Mic Input 2”. When (2) mics are plugged in at the same time, only “Mic Input 1” will have harmonies and pitch-correction. “Mic Input 2” will have all the other lush effects. If there is no additional mic, you can use a ¼” phono cable or adapter into “Mic Input 1” to trick the system into behaving like there are (2) mics plugged in. If you want to minimize the pitch-correction but still keep the harmonies, use Mic Input 1 and set the SKILL LEVEL to “semi-pro” or “pro” settings. This reduces the amount of pitch-correction but still implements powerful harmonies when the HIT button is on. You can also select any effects presets named “PRO” or “SEMI-PRO”.

### Can I use Singtrix with (2) Singtrix Mics or other microphone systems?

Yes. Mic input 1 is the lead, and offers pitch-correction and harmony effects. Mic 1 should be used by one singer at a time for best results. Pitch-correction and harmony is more accurate when applied to one voice at a time. Mic input 2 offers amazing core effects such as lush reverbs, delay and dynamic tone equalization. Since there is no pitch-correction or harmonies applied to Mic 2. Multiple backup singers can share the mic.

Other microphone systems including wireless can be used with Singtrix; however, you lose the ability to control the HIT feature from the mic. Instead, you will have to use the HIT button directly on the Studio Console for harmonies and other “HIT” effects. The Singtrix Mic was designed to be very dynamic with high sensitivity so that singing is

effortless. Other mics may not be as sensitive. To compensate for this, we recommend using a microphone pre-amp with your mic for separate volume/gain control to independently raise your mic's volume level. A ¼" phono plug adapter may be required to plug into the Singtrix Studio console.

### **Can I use Singtrix with a TV?**

Yes, depending on your existing equipment. You may need to discuss this with your local electronics store representative.

Common configurations:

- **Computer Video Output/HDMI ► TV HDMI Input ► TV Audio/Headphone Output to Singtrix Music Input**
- **Singtrix Music Input ◀ Computer Headphone Output / Computer Video Output ► TV video Input**
- **Mobile Device ► Chromecast ► TV ► TV Audio/Headphone Output to Singtrix Music Input**
- **Mobile Device ► Apple TV ► TV ► TV Audio/Headphone Output Singtrix Music Input**

Note: If your Television doesn't have an analog headphone output, you can use a digital to analog adapter. Optical or coaxial to RCA adapters are inexpensive option if the TV has these audio outputs. You will need an additional cable that goes from the RCA connections on the adapter to the 3.5mm stereo music input of the Singtrix effects console. When using a computer for audio and TV for Video, you must first become familiar with the computer's specific soundcard and audio settings options. Many computers allow you to play audio from the computer headphone output while playing video on a TV.

### **Will Singtrix work with my existing karaoke system?**

It depends. Singtrix requires an analog audio signal to detect song key in order for pitch-correction and harmony effects to work properly. If your Karaoke system has a headphone output or other audio output, that can be connected to the Singtrix music input. Audio adapters may be required to make this connection. Any separate speaker or amplification system must be directly connected to the Singtrix speaker output. The speaker or amplification system cannot bypass the Singtrix speaker output. For example, if your karaoke system has a built in speaker system, the music signal played on the karaoke system must not play directly through the internal speaker. The music heard coming out of the Singtrix speaker output will be out of sync with the music coming out of the karaoke player's internal speaker system.

This signal chain is required: **Karaoke Player/Music ► Studio Console Music Input / Studio Console Speaker Output ► Speaker System.**

### **What are common setup mistakes! What do I do if I hear feedback or distortion?**

If using a karaoke app on our mobile device, you must turn off the device's internal microphone since it will cause feedback. Please refer to your music device's specific instructions. If you're using a second microphone, make sure it is not near and pointed directly at the Singtrix Speaker. If you experience any hum, buzzing or distortion out of the speaker, it is commonly caused by incorrect volume settings, cables in the wrong plug, or a plug not fully inserted (speaker plug) into the back of the Studio Console speaker output. To isolate problems or noise attributed to the speaker itself, you can try plugging in your music device such as a tablet or phone directly to the speaker bypassing the Singtrix console.

## **SUPPORT**

**Where do I go for Support?** Go to [singtrix.com](http://singtrix.com) or contact us at [support@singtrix.com](mailto:support@singtrix.com). We value Singtrix customers and look to provide world class support. Send us an email to expedite the process. We reply to all inquiries within 24 hours and typically within the same business day. Go to [singtrix.com](http://singtrix.com) for support resources including guides, videos and more.

- **Technical Specs**
- **Preset List & Guide**
- **Song FX Reference List Warranty**
- **Assembly & Setup**
- **Quick Start Guide**
- **Instrument/live-mode**
- **Troubleshooting**
- **Singtrix YouTube® Karaoke Playlists** (3<sup>rd</sup>party content organized for your convenience. Singtrix does not guarantee music content availability or YouTube® services)

<b>Studio</b> (Effects Console)	<b>Studio AC Adapter</b>	<b>3.5mm Music Audio Cable</b>	<b>Speaker</b> (2.1 Stereo Home Theater System)	<b>Speaker AC Brick Adapter</b>	<b>Speaker Cable</b> (w/ Left & Right RCA plugs)	<b>HIT Button</b>
						

Step	Symptom / Cause	Check / Troubleshooting	Solution
<b>No Audio from both Mic &amp; Music Device</b>			
1	<b>Studio</b> or <b>Speaker</b> not powered on	Check that you have turned on power to both the <b>Studio</b> and <b>Speaker</b>	Power all components
2	Cables plugged incorrectly or not fully inserted	Check all connections	Make proper connections
3	<b>Speaker cable</b> not functioning	Confirm that <b>Speaker</b> and <b>Studio</b> are working: 1) Check <b>Speaker</b> light is on. With volume turned up 75% on <b>Speaker</b> disconnect the left or right RCA plug on the back of the <b>Speaker</b> and re-insert and listen for any static. 2) Plug headphones directly into <b>Studio</b> speaker output. Check both <b>Studio</b> speaker outputs 1 and 2	Replace <b>Speaker cable</b> if the following is confirmed: 1) <b>Speaker</b> works - when powered, unplugging and re-inserting the RCA plugs at the back of the <b>Speaker</b> causes a contact or static noise, and... 2) The <b>Studio</b> speaker outputs work with headphones.
4	<b>Speaker</b> not functioning	Check for lights on the <b>Speaker</b> and <b>Speaker AC Adapter</b> . With volume turned up 75% on <b>Speaker</b> disconnect the left or right RCA plug on the back of the <b>Speaker</b> and re-insert and listen for any static.	If no power or noise when unplugging and re-inserting the RCA plugs, <b>Speaker</b> needs to be replaced or repaired.
5	<b>Speaker AC Brick Adapter</b> not functioning	If <b>Speaker</b> is not working, check for lights on <b>Speaker AC Brick Adapter</b>	If no power, <b>Speaker AC Brick Adapter</b> or Adapter plug connector needs to be replaced. If you have a compatible plug from another device, try with the AC Brick Adapter.
6	<b>Studio</b> speaker output not functioning	Plug Music Device directly into the <b>Speaker</b> using the <b>Speaker cable</b> .	If sound is heard with device plugged directly into the <b>Speaker</b> , <b>Studio</b> needs to be replaced or repaired. If no sound, follow the troubleshooting steps above to confirm both <b>Speaker</b> and <b>Speaker Cable</b> are working properly.
7	<b>Speaker</b> turns off on its own (power indicator light is off) after a period of time when system is not in use.	Turn <b>Speaker</b> power off for 5 seconds and then back on. An environmentally friendly energy saving feature may be active on your <b>Speaker</b> . Turning power off and on resets the power saving mode on some units.	Reset power or raise your music device volume (smart device or computer etc) to around 85%-90%. The <b>Speaker</b> will detect the increase signal volume level and turn back on.

Step	Symptom / Cause	Check / Troubleshooting	Solution
<b>There is Music Device audio but no Mic audio</b>			
1	Incorrect volume mix: <b>Speaker</b> too low and <b>Music Device</b> too loud	Confirm that <b>Speaker</b> and <b>Studio</b> are working:	If <b>Mic</b> audio is heard, lower <b>Music Device</b> volume and follow music mix procedures in the <b>Quick Start Guide</b> .
2	<b>Studio Mic</b> input not functioning	Check for audio by plugging and unplugging <b>Mic</b> into the <b>Studio</b> while <b>Speaker</b> volume at 75%. Check both <b>Mic</b> inputs.	If you DO NOT hear audio from unplugging but no audio when singing into the <b>Mic</b> , <b>Studio</b> needs to be replaced or repaired.
3	<b>Mic</b> not functioning	Check for audio by plugging and unplugging <b>Mic</b> into the <b>Studio</b> while <b>Speaker</b> volume at 75%. You should hear noise when unplugging. Check both <b>Mic</b> inputs.	If you hear amplified noise when unplugging but no audio when singing into the <b>Mic</b> , this means the <b>Studio</b> is working but the <b>Mic</b> needs to be replaced or repaired.
<b>There is Mic audio but no music audio</b>			
1	<b>Music Device</b> volume on mute or too low	Confirm that <b>Speaker</b> and <b>Studio</b> are working:	Raise Music Device volume
2	<b>Music Device</b> speaker output not functioning	Confirm that Music Device speaker output works by plugging in headphones to your device.	Try different Music Device
3	<b>3.5mm audio cable</b> from <b>Music Device</b> to the <b>Studio</b> music input not functioning	With the <b>3.5mm Music Audio Cable</b> plugged into the <b>Studio</b> music input and <b>Speaker</b> volume at 75%: 1) unplug and re-insert the cable at the music device headphone output, and 2) unplug and re-insert the cable at the <b>Studio</b> Music Input.	If amplified sound is not heard when unplugging and plugging the music audio from the music device, but amplified sound is heard when plugging and unplugging cable into the <b>Studio</b> music input, replace <b>3.5mm Music Audio Cable</b> .
4	<b>Studio</b> music input not functioning	Check music input of the <b>Studio</b> is working properly by plugging and unplugging <b>3.5mm Music Audio Cable</b> into the music input while <b>Speaker</b> volume at 75%.	If no amplified sound is heard when unplugging cable from the music input on the <b>Studio</b> , <b>Studio</b> needs to be repaired or replaced.
<b>Low Mic volume</b>			
1	Your <b>Music Device</b> volume is set too high causing you to have a low <b>Speaker</b> volume	Follow proper mix level steps via quick start guide: -lower <b>Music Device</b> volume to 20% -raise <b>Speaker</b> volume to 75% -sing to check <b>Mic</b> volume is correct -raise <b>Music Device</b> volume until desired mix is achieved	Adjust proper mix levels
2	Using another brand of <b>Mic</b> with lower sensitivity		Raise <b>Mic</b> volume on <b>Studio</b> , or use a <b>Mic</b> preamp with <b>Mic</b> for independent volume control
<b>Speaker distorted / static / hum / buzz</b>			
1	<b>3.5mm Music Audio Cable</b> not plugged into <b>Music Device</b>	Check that music device is plugged into the <b>3.5mm Music Audio Cable</b>	Make proper connections
2	<b>Speaker</b> cable partially inserted into speaker output on <b>Studio</b>	Check <b>Speaker</b> cable plug fully inserted into <b>Studio</b> console. Push firmly.	Make proper connections
3	Your <b>Music Device</b> volume is set too high overdriving the audio signal	Follow proper mix level steps via quick start guide: -lower <b>Music Device</b> volume to 20% -raise <b>Speaker</b> volume to 75% -sing to check <b>Mic</b> volume is correct -raise <b>Music Device</b> volume until equal volume mix between mic and music is achieved	Adjust proper mix levels
4	<b>Speaker</b> damaged during transit	Plug <b>Music Device</b> (tablet or phone) directly into the <b>Speaker</b> using the <b>Speaker cable</b>	If sound is still distorted or static is heard, <b>Speaker</b> needs to be replaced or repaired.

Step	Symptom / Cause	Check / Troubleshooting	Solution
<b>Only music sounds distorted</b>			
1	Your <b>Music Device</b> volume is set too high overdriving the audio signal	Follow proper mix level steps via quick start guide: -lower <b>Music Device</b> volume to 20% -raise <b>Speaker</b> volume to 75% -sing to check <b>Mic</b> volume is correct -raise <b>Music Device</b> volume to achieve desired mix	Adjust proper mix levels
<b>Only Mic sounds distorting</b>			
1	Singing too close or loudly into <b>Mic</b>	Move about 2-3 inches from the <b>Mic</b> and do not scream	Lower <b>Mic</b> volume and/or move away from the <b>Mic</b> when singing. Review our " <b>Tips and Trix</b> " for pointers.
2	<b>Mic</b> volume set too high relative to your singing voice	Check <b>Mic</b> volume	Lower <b>Mic</b> volume and/or move away from the <b>Mic</b> when singing. Review our " <b>Tips and Trix</b> " for pointers.
<b>Studio not tuning correctly</b>			
1	Singing a cappella: There is no background music to set key / defaults to C-Major	Play music source and sing to test tuning	Tuning presets require background music to establish key, play music. See our Support FAQs for tips on how to set a fixed key and singing without music
2	When using presets with more subtle or natural tuning, it will only do 40%-60% of the work and the singer must do the rest	Experiment with presets that are named "TUNED _____" and make sure the Skill Level/My Voice is set to Enhanced (vs. Pro or Semi Pro)	Review our " <b>Tips and Trix</b> " for pointers. User must commit and try to hit the notes or melody. Use presets that have more tuning such as presets 1-15
3	Poor signal/ bad <b>3.5mm Music Audio Cable</b> causing poor audio quality or sonic/subsonic interference	Replace <b>3.5mm Music Audio Cable</b> and check performance	Replace <b>3.5mm Music Audio Cable</b>
4	Low quality/resolution music	If using YouTube, check video quality	Set video quality to 360p or above
<b>Vocal effects too strong</b>			
1	<b>Music Device</b> music mix too low	Raising the <b>Music Device</b> volume to <b>Mic</b> mix	Review our FAQs and other support resources. The louder the music, the more effects will blend into the background track.
2	Skill Level/My Voice: on Enhanced (full effects and pitch-correction)	Change Skill Level/My Voice setting to Semipro or Pro	Review our " <b>Tips and Trix</b> " for pointers.
3	You're using some of the more enhanced presets	Try presets Named Semipro _____ or Pro _____ or some of the song presets	Review our " <b>Tips and Trix</b> " for pointers.
4	<b>HIT Button</b> is on/active	Blue light indicates <b>HIT Button</b> is activated	Use <b>HIT Button</b> only on the chorus or bridge of a song
<b>There is a music input audio delay when using an instrument or when using with secondary sound systems</b>			
1	<b>Multiple or Secondary Speaker System</b> not plugged into the Singtrix <b>Studio</b> speaker output	Check that your secondary <b>Speaker</b> system is plugged into the Singtrix speaker output and not directly out of your <b>Music Device</b> .	Review our FAQs and other support resources. Singtrix delays the output of karaoke tracks by a few milliseconds to help the processor track and tune karaoke tracks more accurately. If you are not using an instrument, make sure that all <b>Speaker</b> systems are plugged into of the two <b>Studio</b> speaker output. See the <b>Quick Start Guide</b> to understand proper signal flow.
2	<b>Singtrix Studio</b> not set to <b>LIVE Mode</b> when using an instrument as the music source in place of a karaoke track	Press and hold both top left and right buttons (Song Voice and Skill Level/My Voice) at the same time for 10 seconds.	Review our FAQs and other support resources including our <b>Instrument &amp; Live Performance Mode Guide</b> . Singtrix delays the output of karaoke tracks by a few milliseconds to help the processor track and tune karaoke tracks more accurately. Single instruments do not require as much processing time as karaoke tracks with multi-layered instrument and percussion sounds. If you are using an instrument, disable system latency by pressing and holding the Song Voice and Skill Level/My Voice buttons for 10 seconds.