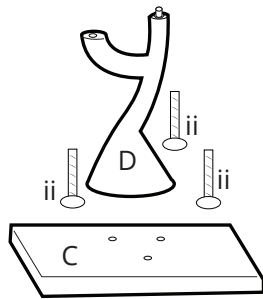
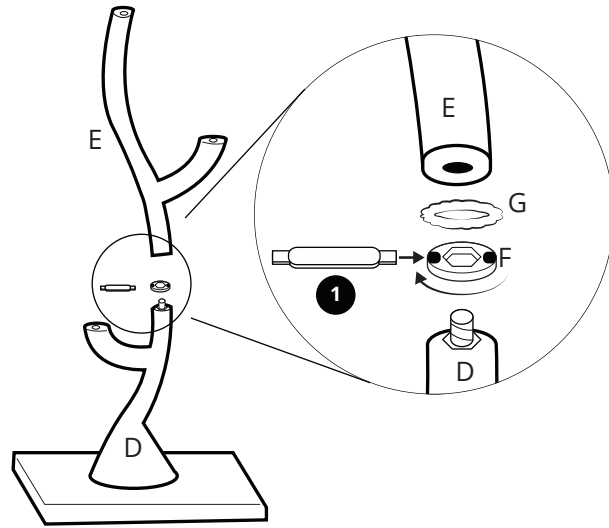


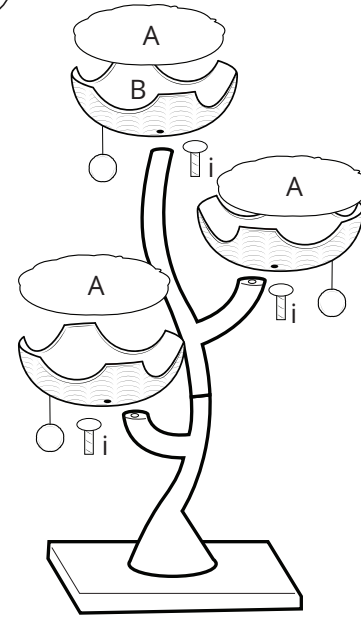
1



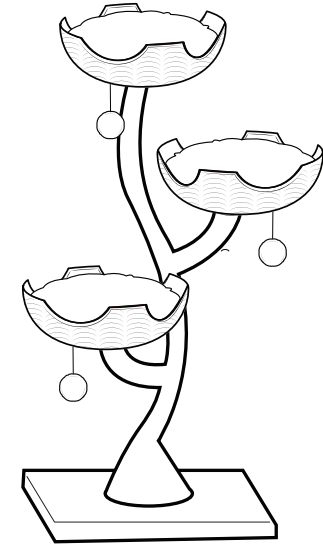
2



3



4

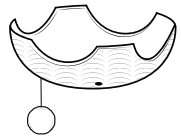


A 3x



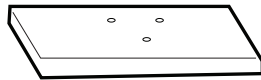
42mm

B 3x



45cm

C 1x



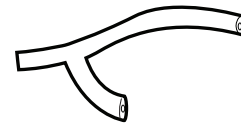
58*58*5cm

D 1x



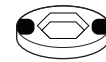
41.5cm

E 1x



59.5 cm

F 1x



4cm

G 1x



i. 3x

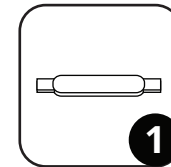


D10*40mm

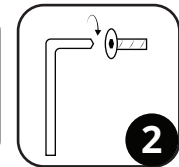
ii. 3x



D10*70mm



1



2

Assembling “The Sanctuary” Cat Tree

1. Assemble the Base

- a. Gather parts D (x1), C (x1), and ii (x3).
- b. Connect Trunk D to Base C with bolts ii (x3).

2. Assemble the Trunk

- a. Connect the two Trunks (D & E) together to make one tall Trunk. This is done by connecting Trunk D (x1) to Trunk E (x1) with parts F (x1), H (x1), and tool I (x1).
- b. Part F is placed onto the top of Trunk D, and Elastic Band (H) is placed on top of Part F. The Elastic Band (H) is used to create a more visually pleasing connection point after the two Trunks are connected.
- c. Trunk E will be fastened into the top of Trunk D. Try to keep the area of connection as flat as possible so the bolt can properly twist into place. Tool I is used to hold Part F in place with you either:
 - i. Spin Trunk E clockwise to tighten (this might require a second set of hands to hold Tool I in place), or
 - ii. Hold Trunk E in place and use Tool I to spin Part F clockwise to tighten.
 - iii. If you have any difficulty during this process, please watch the video link on our site or scan the QR code on this page.

3. Attach Baskets

- a. Attach Baskets B (x3) to Trunks (D & E) with one bolt each (i).
- b. Place Cushions A (x3) into Baskets B (x3).