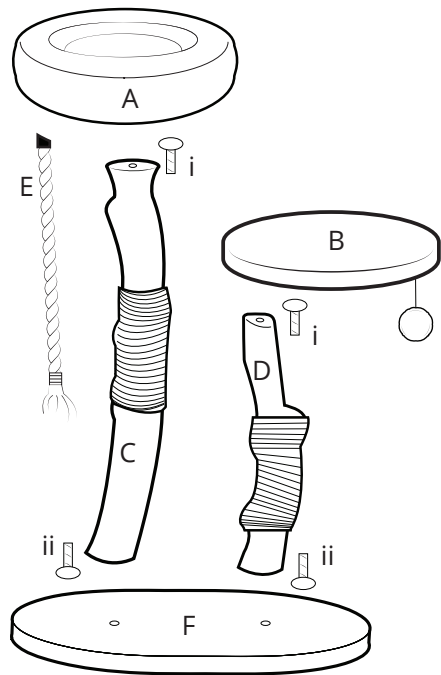
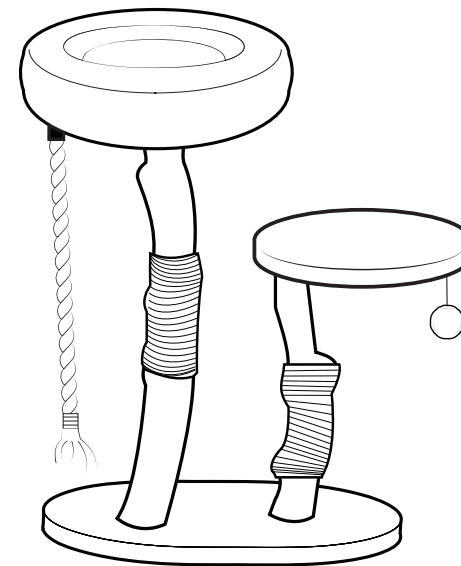


1

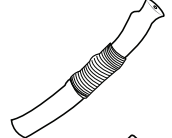


2



A 1x  40*40cm

B 1x  35*30cm

C 1x  65-70cm

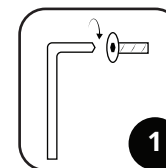
D 1x  45-50 cm

E 1x  45cm

F 1x  59.5*45.5*3cm

i. 2x  D10*40mm

ii. 2x  D10*50mm



Assembling “The Oasis” Cat Tree

1. Attach Trunk to the Base.
 - a. Gather parts F (x1), C (x1), D (x1), and ii (x2).
 - b. Attach both Trunks (C & D) to the Base (F) with one bolt (ii) each.
 - c. Attach Platform (A) to Trunk (C) and Platform (B) to Trunk (D) with one bolt (i) each.
 - d. Attach Cat Rope (E) to Platform (A)

2. Let your cat enjoy their new favorite Oasis spot!