



UTZON PENDANT JU1

BY JØRN UTZON
1947

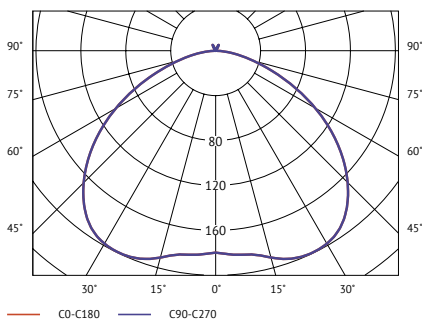
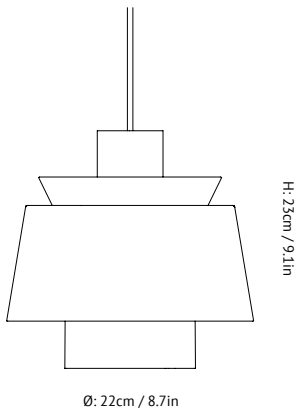


UTZON PENDANT JU1

BY JØRN UTZON
1947

To Jørn Utzon, his father's naval engineering drawings became a lifelong fascination with ships and boats, along with light. More than a decade before Jørn Utzon created his masterpiece, the Sydney Opera House, he put his childhood fascination into this pendant, combining successfully the smoothness of the lines of a ship with the source of light for the first time.

& The choice of white or polished chrome finish reminds one of the waves and the northern light.



Photometric data file (LDT or IES) available upon request.

Product type	Pendant.
Production Process	The metal shades that make up the Utzon pendant are made from a combination of deep drawing and spinning.
Environment	Indoor.
Dimensions (cm / in)	Ø: 22cm/8.7in, H: 23cm/9.1in.
Weight (kg)	1.00 kg.
Materials	Chromed or lacquered metal, 3 meter fabric cord.
Colours	White lacquered steel with white fabric cord. Chromed steel with white fabric cord. Lacquered copper with black fabric cord.
Voltage (V)	220-240V - 50Hz.
Light source & Energi efficiency class	E27 Max 60 Watt. The luminaire is compatible with bulbs of the energy classes: A++ - E Bulb is not included
Certifications	CE, IP20, Class II.
Canopy	Included.
Cord lenght / diameter (cm / in)	300cm/118.1in.
Cleaning Instructions	Clean with soft dry cloth. Always switch off the electricity supply before cleaning.
Package Dimensions (cm / in)	H: 29.0cm/11.4in x W: 25.0cm/9.8in x D: 25.0cm/9.8in.

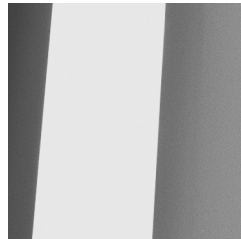
PRODUCT



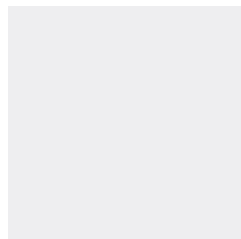
COLOR



Lacquered copper



Chromed steel



White lacquered steel