

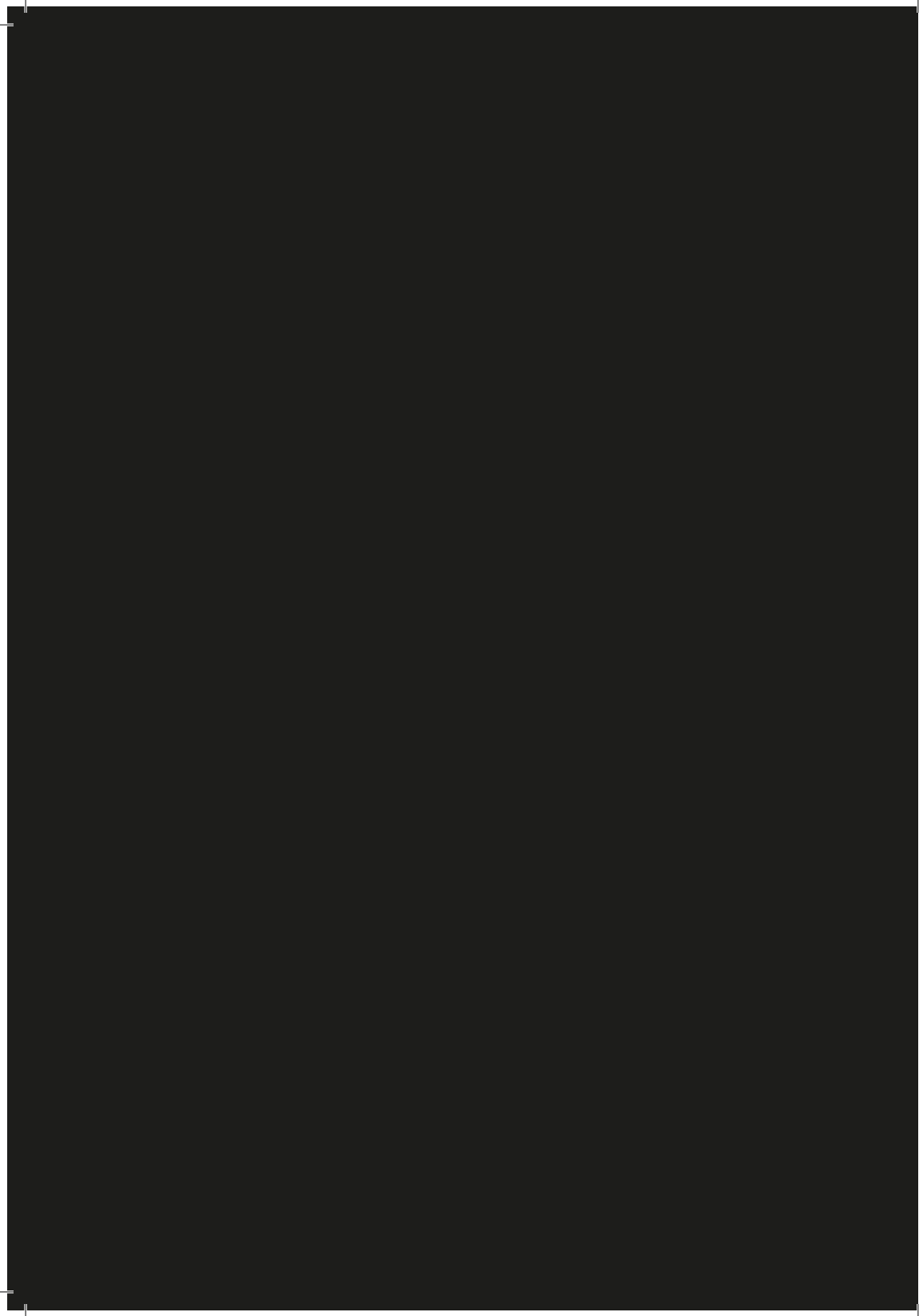
» STEAMBOW »



# **AR-6 STINGER II**

TACTICAL VERSION







**OWNER'S MANUAL**  
**STEAMBOW AR-6 STINGER II**  
TACTICAL VERSION

# SAFETY INFORMATION

These instructions are the same as apply to any crossbow. An AR-6 Stinger 2 is identical to a conventional crossbow in terms of the dangers and legal regulations. When using this very compact crossbow, be sure to follow the general safety rules for all shooting sports and especially be sure to follow your local regulations about using crossbows.

For your own safety and the safety of others, read this entire owner's manual carefully before you use this product for the first time. You as the user are responsible for being sure of and complying with all laws and other regulations about the use of crossbows in your country and state. You may not alter this product. Any modifications to the product will immediately void the warranty and manufacturer's guarantee.

- 1 Your AR-6 Stinger 2 is a dangerous sporting arm! Treat your crossbow with the same respect that you must apply when handling a loaded firearm.*
- 2 Always point your crossbow in a safe direction. Never point your crossbow at people, animals, or objects that you do not wish to damage, not even unintentionally or when playing. Only point your crossbow at targets you intend to shoot!*
- 3 Treat a cocked crossbow in the same way as a loaded firearm. Both are capable of causing serious injury or death! Your crossbow can cause injury with or without a bolt on the deck.*
- 4 Your AR-6 Stinger 2 has no manual trigger safety! Because of this, only cock this product immediately before you intend to fire, and never transport your crossbow in a cocked state. Do not place your finger on the trigger until you intend to fire.*
- 5 The string of your crossbow moves at a very high speed and can cause serious damage or injury. For this reason, you must be sure that there are no obstructions, objects, or body parts in the path of the string. This especially means that your support hand must be below the crossbow deck at all times. You should ideally place your support hand on the included vertical forend grip.*
- 6 The limbs move forward at a high speed when you fire your crossbow. You must be sure that there are no obstacles in the path of the limbs, as contact between the limbs and an obstacle during firing can damage or destroy the limbs and cause injury to animals or people.*
- 7 When climbing over obstacles or climbing into a hunting stand, make sure that your crossbow is not cocked. We recommend not cocking your crossbow until immediately before you intend to fire.*
- 8 Never modify your crossbow under any circumstances! Trigger modifications in particular can render your crossbow unsafe.*

- 9** *Inspect your crossbow for loose fasteners, visible damage, or worn parts (especially the string) before and after each use. Be sure to replace any worn parts before the next use. Do not use your crossbow under any circumstances if the string is damaged!*
- 10** *Uncock your crossbow if you did not have an opportunity to fire or if you no longer intend to fire. Do not store your crossbow in a cocked state.*
- 11** *Never fire your crossbow without a bolt (this is called dry firing). This can damage your crossbow and cause injury. When loading bolts into the magazine, inspect the bolts for damage. Never use damaged bolts.*
- 12** *Note that bolts that strike a target at an angle may be deflected. Such ricochets can be very dangerous.*
- 13** *Children may only use this product under adult supervision. In such instances, the adult bears full responsibility.*
- 14** *Safety glasses should always be worn when shooting.*
- 15** *Always ensure that you have a suitable backstop that will catch all bolts that you fire. The bolts that are fired from this crossbow can penetrate many objects and materials to a considerable depth or even pass through them.*
- 16** *Your crossbow has an internal compartment for various optional accessories. A laser sight is also available for this accessory compartment. If this laser is installed, be sure to never look into the laser emitter, and never point the laser at anyone's eyes (people or animals)! The laser can cause serious eye injuries or permanent blindness. Be careful when pointing the laser at reflective surfaces such as mirrors, windows, or polished metal surfaces.*

**ATTENTION!**

*Only use original Steambow bolts. The bolts that we offer are optimized for use with the AR-6 Stinger and guarantee optimal functionality and a long life. Steambow bolts are heavy and very robust, and thus deliver very good performance.*

Pistol crossbow bolts from other manufacturers are often unsuitable for use with the AR-6 Stinger 2. Many of these bolts, especially the ones made of plastic, are too light and cause failures to feed, firing problems, and may also damage your crossbow. The aluminum bolts are often too large in diameter. This means that only 5 bolts will fit in the magazine, or that your crossbow will malfunction if you load 6 such bolts in the magazine.

Original Steambow bolts can be purchased from participating dealers or at **[www.steambow.com](http://www.steambow.com)**. Inspect the bolts for bending and damage before each use.

**ATTENTION!**

*Never use bent or damaged bolts!*

The magazine spring is adjusted at the factory so that the string can slide beneath this spring. This makes it possible to cock your crossbow without loading a bolt. You must keep track of how many bolts you have fired so that you do not dry fire your crossbow.

If you bend the end of the magazine spring straighter than it is when it comes from the factory, the spring can then block the string when the magazine is empty. This can prevent dry firing, in other words firing your crossbow without a bolt on the deck. If you encounter an unusually high level of resistance when cocking, this indicates that the magazine is empty. If you attempt to cock your crossbow at this point, you will damage the magazine spring.

Bending the magazine spring straight (see the pictures) is expressly permitted and will not void the guarantee.



**ATTENTION!**

*Regularly check all screws to ensure that they are tight. In particular, be sure to check the front screw, which secures the prod into place. Your crossbow is only accurate when the prod is secure and centered precisely on the crossbow deck. Use the two white marks on the front of the prod to properly center it.*

# ASSEMBLING YOUR AR-6 STINGER 2 CROSSBOW

## STEP 1: Install the adjustable stock



Make sure the castle nut is screwed back as far as possible.

Now screw the included stock into the main unit of your AR-6 Stinger 2.

Screw the stock into the cocking handle of your crossbow as far as possible, then screw the stock back out until it is oriented correctly.



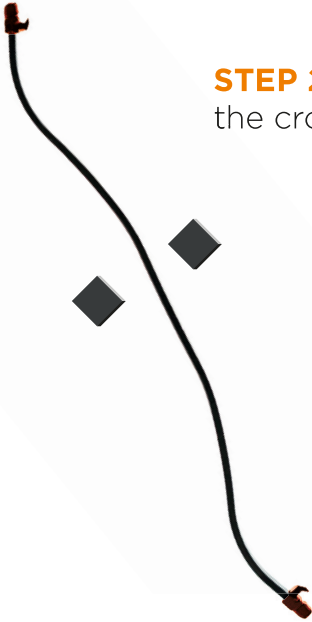
Lock the stock into place by tightening the castle nut. Use the included wrench.

**STEP 2:** Install the prod in the slot at the end of the crossbow deck.

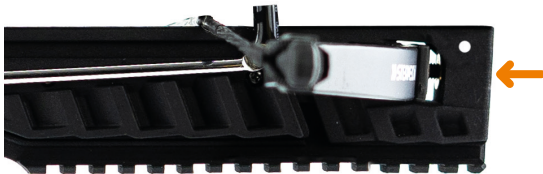
The small parts kit includes two plastic-coated metal shims and two limb caps made of black plastic.

One shim each must be installed in front of and behind the prod.

It is best to install the end caps after you install the prod in the crossbow deck.



Insert the prod and 2 shims in the slot at the end of the crossbow deck.



Make sure that the white marks on the front of the prod are centered and secure the prod with the front screw.



### STEP 3: String the prod

Use the included stringing aid to install the string.

As you will need this stringing aid to replace the string later, be sure to keep it in a safe place.

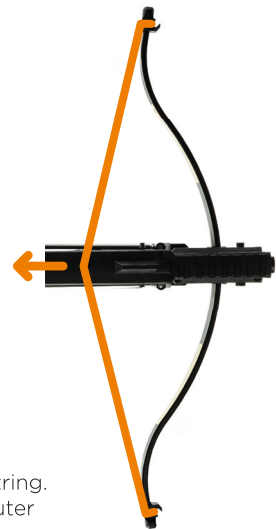
#### NOTE

*You can fashion such a stringing aid easily yourself. All you need is a piece of thin, stout cord (such as paracord). Instructional videos can be found on the Internet, or you can find help with this at [www.steambow.com](http://www.steambow.com).*

- 1 Loop the ends of the stringing aid over the inside notches of the limb caps.



- 2 Once you have attached the stringing aid, use the cocking system on the AR-6 Stinger to pull the stringing aid into the latch.



- 3 The limbs are now pulled back far enough to allow you to attach the string. Loop the ends of the string in the outer grooves.



Thread the string through the loops of the stringing aid to do this. Otherwise, you will not be able to remove the stringing aid.

- 4 Once the string loops have been positioned properly on the limb caps, you can remove the stringing aid.

Hold your crossbow and the stringing aid firmly and then carefully lift the stringing aid out of the notch in the latch. Allow the stringing aid to move forward slowly until the string is taut. You can now remove the stringing aid.



## STEP 4: Install the magazine on your crossbow



Place the magazine on top of your crossbow as shown. Secure the front of the magazine (1) with the included longer M4 bolt and nut. Use one of the washers on each side.

Secure the back of the magazine (2) with the shorter bolt. Use a washer at the bolt head; no washer is needed at the nut. Hold the nut tight with your fingers and screw the bolt down with the included hex key.

### OPTIONAL RED DOT SIGHT

*If desired, install the optionally available red dot sight on the front optics rail (3). You must insert the included CR2032 lithium battery before you can use the sight. All information about this red dot sight can be found in the instructions provided with the sight.*

*You can also aim with the optional laser sight or with the open sights on top of the magazine.*



Now, install the included black vertical forend grip on the accessory rail on the bottom of the crossbow unit. It is marked in red in the picture.

## OPTIONAL LASER SIGHT



An optional red laser sight (article no.: 0000425) can be installed in the integrated accessory compartment.

The magazine must be disassembled to install it. Please follow the installation instructions that are provided with the laser.

### ATTENTION!

*Never reach between the limbs and string when your crossbow is cocked! Always operate this switch by reaching down from above to prevent potential injury to your hand!*

### NOTE

*The laser sight is used for quick shooting at short distances (less than 15 yards) and for aiming in low light. The laser is not suitable for shots at long distances or in bright daylight.*

The laser is also ideal for shooting from the hip and for other unconventional shooting positions, such as shooting one-handed.

The laser is often impractical at longer distances because it takes too long to find the laser dot and then place the dot where you want to hit. The dot may also be hard to see or even washed out entirely in bright sunlight. In this case, it can help to point your crossbow down, at which point you can see the dot on the ground in front of you. You can then aim your crossbow by walking the dot up to the target. When shooting at longer ranges, you may often have to “hold over,” in other words aim higher than the point you wish to hit. In this case, the laser is not even pointing at the target, and precise shooting is very difficult.

We recommend using a red dot sight for shooting in bright light or at long ranges. It is best to zero the red dot sight and laser sight for different distances to cover more potential applications.

## CHECKING THE LASER SIGHT

Switch the laser on. Aim over the open sights (the magazine latch spring serves as the rear sight) at a wall or object about 5 yards away and compare the sight picture with the location of the laser dot.

The laser dot generally does not need to be set absolutely perfectly for the intended use of the laser sight. Take a few shots to see if the laser is zeroed adequately for your needs. Our experience has shown that fiddling with the fine adjustment usually offers no practical benefits. You only need a very precise zero for shooting at longer ranges, for which we recommend the use of a red dot sight on the top Picatinny rail.



*Magazine cover latch spring*



*The front sight of the AR-6 Stinger from behind*



*Projection of the laser dot at about 5 yards. The laser dot is just above the front sight when the sights are aligned properly.*

## ZEROING THE LASER SIGHT

The laser is adjusted using the 3 small screws at the front of the laser housing. You can turn the screws and adjust the laser with the included small hex key.

### ATTENTION!

*Only apply light force to the hex key to avoid stripping the threads on the small screws. If this happens, it will not be possible to adjust the laser, and the laser unit will have to be replaced.*

### ATTENTION!

*In order to screw one of the adjusting screws in (by turning clockwise), you must first screw out the two screws on the opposite side (by turning them counterclockwise)!*

Check whether the laser dot has moved as desired by aiming with the open sights.

Take a few shots to see if the laser is zeroed to the desired impact point.

### ATTENTION!

*Only turn the screws in small increments of no more than one quarter turn. Turning the screw by a small amount moves the laser dot quite far.*

## Alternative Method for Zeroing the Laser

Find some way to clamp your crossbow into place. A bench vice or similar fixture is ideal. The important thing is that your crossbow remains in the same position before and after firing. If you use a bench vice, be sure to protect the surface of your crossbow from scratching or marring.

Aim your crossbow at a target that is between 3 and 5 yards away with the sights on top of the magazine. Then fire a bolt. The bolt should strike the target and be clearly visible from your crossbow.

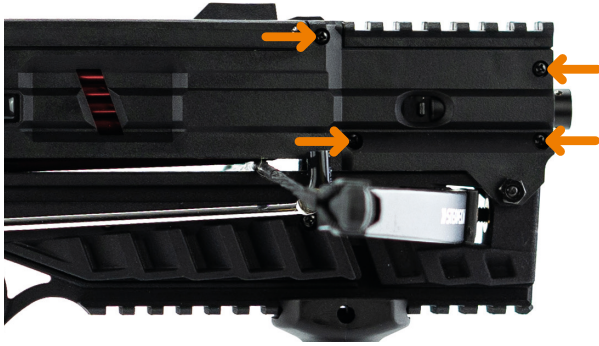
With your crossbow still clamped into place, adjust the laser so that the dot is on the bolt that you fired into the target. Because the laser unit is equipped with 3 adjusting screws, it is not possible to simply adjust the laser vertically or horizontally as is possible with a red dot sight, for example. Work slowly and carefully, and only apply light force to the adjusting screws.

After this, you can adjust the laser more precisely for whatever distance you desire. Verify that the laser is zeroed correctly by firing a few test shots.

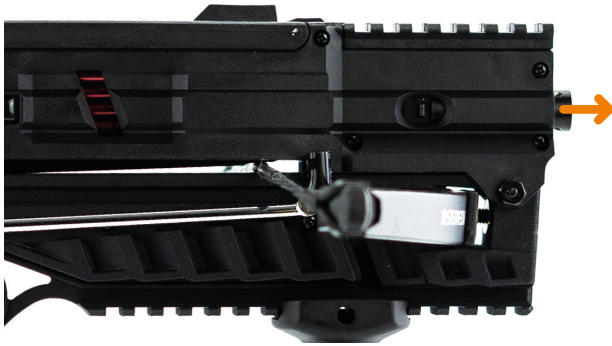
### **ATTENTION!**

*Turning the adjusting screws by a very small amount will move the laser quite far. Work slowly, fire test shots in between to check your progress, and take your time zeroing.*

## LASER SIGHT BATTERY REPLACEMENT



Loosen the 4 front magazine screws. You can then turn and move the laser.



Now unscrew the laser by turning the part protruding from the magazine to the left. The laser switch remains in the magazine.

### IMPORTANT!

Use 1.55 volt AG13/357A/CS44/LR44W alkaline button cells.

Screw the laser back in, ideally while holding the magazine angled 45° to 90° down so that the batteries cannot fall out while you are screwing the laser back in.

Only tighten the magazine screws hand tight to avoid damaging the threads in the magazine.

### NOTE

Make sure to position the switch in the same place as before you changed the batteries when you tighten the screws back down. If you do not, the laser zero on your AR-6 Stinger may change slightly. Adjust the laser if necessary. Only tighten the magazine screws hand tight to avoid damaging the threads in the magazine.

## USING THE OPEN SIGHTS



*Magazine latch spring from behind*



*The front sight of the AR-6 Stinger from behind*



*The sight picture for close range shots*



*The sight picture for long range shots*

You will become familiar with how much the bolts drop at longer distances with practice and will know exactly where to aim. We generally recommend using a red dot sight to be able to shoot accurately at long ranges.

## LOADING THE MAGAZINE



Open the cover by pressing the spring on the top of the back of the magazine towards the rear:



Then, place up to 6 bolts in the magazine. Place the tips of the bolts in first, and then let the bolt drop into the magazine.

Make sure that the vanes are horizontal in the magazine, especially for the first bolt on the deck.

**The magazine can also hold bolts with broadheads.**



Once you have loaded the bolts, close the magazine cover. You can now cock your crossbow.

## COCKING YOUR CROSSBOW



First release the cocking handle catch by pressing the red lever (1).



Hold your crossbow by the vertical forend grip (2) and cock the limbs with the cocking handle (3).



Once the string has locked into the rearmost position, return the cocking handle to its original position. Your crossbow is now ready to fire!

It is easiest to cock your crossbow when you hold it at a downward angle. Always point your crossbow in a safe direction when cocking it.

### ATTENTION!

*Your crossbow is ready to fire immediately after you cock it! There is no manual trigger safety! Because of this, only cock your crossbow immediately before you intend to fire. Always hold your crossbow by the vertical forend grip when you cock it.*



## SHOOTING YOUR CROSSBOW



As soon as you have cocked your crossbow, you can fire a bolt by depressing the trigger (1).

When shooting, always keep your hands below the cocking bars (2) and hold your crossbow by the included vertical forend grip (3).

The string moves forward at a high speed and can injure you if any part of your hands is above the rail.

### ATTENTION!

*The string can injure you if your fingers or any part of your hands is above the rail when you fire a bolt! The side cocking bars serve to protect your hands.*

### ATTENTION!

*The precision of your crossbow depends a great deal on depressing the trigger correctly. Do not jerk or slap the trigger. When you want to shoot, steadily increase rearward pressure on the trigger until your crossbow fires. You can also do this very quickly with practice.*

### ATTENTION!

*Count your shots as you fire them, or check before each shot to see whether the magazine is empty. Otherwise, you may dry fire your crossbow. This can damage your crossbow or destroy the prod.*

# MAINTAINING YOUR CROSSBOW

Grease the deck of your crossbow with a special lubricant for crossbow decks. Silicone grease also works well.

The string must be treated with string wax and inspected regularly for wear or damage. If the serving on the string is damaged, you must replace the string or replace the serving on the string.

Grease the side rails in which the cocking bars run on both sides of the crossbow deck.

## TROUBLESHOOTING

- If the first bolt you fire impacts in a different spot than the subsequent shots or the magazine cover pops open when you cock your crossbow with a full magazine, the magazine spring is bent too much at the end. Because of this, there is not enough space for the 6th bolt in the magazine. Bend the end of the magazine spring a bit flatter.
- If the magazine cover still pops open when you cock your crossbow with a full magazine, bend the magazine latch spring forward a little bit. This usually solves the problem permanently.
- If you have bent the magazine spring by cocking your crossbow with an empty magazine, try to bend the spring back into the proper shape. The spring usually functions fine afterwards.
- If the laser does not function, this usually indicates a contact problem. First make sure that the switch is screwed on all the way. Then make sure that all 3 grub screws at the front of the laser are in contact with the brass-colored laser diode. These 3 screws must be tight (be careful to only tighten them hand tight).
- If the problem persists, replace the batteries.. If none of the previous steps works, apply contact cleaner to the laser switch.

## MANUFACTURER NOTICE

Made in Taiwan.

Subject to technical changes and errors.

**» STEAMBOW »**

**Steambow GmbH**

Bäckerstrasse 1  
2433 Margarethen am Moos  
Austria

**[www.steambow.at](http://www.steambow.at)**

DESIGNED  
IN AUSTRIA 

the 1990s, the number of people in the world who are living in poverty has increased from 1.1 billion to 1.6 billion (World Bank 2000).

There are a number of reasons for this increase. One of the main reasons is the rapid population growth in the developing world. The population of the world is expected to reach 8 billion by the year 2025 (United Nations 2000). This increase in population is putting a strain on the world's resources, particularly in the developing world.

Another reason for the increase in poverty is the rapid growth of the service sector in the developed world. This growth has led to a concentration of wealth in the hands of a few people, while the rest of the population has seen their wages stagnate or decline (World Bank 2000).

There are a number of ways in which we can address the problem of poverty. One of the most important is to improve the quality of education and health care in the developing world. This will help to create a more skilled and healthy workforce, which is essential for economic growth.

Another important way to address poverty is to improve the distribution of income. This can be done through a variety of means, including progressive taxation and social welfare programs (World Bank 2000).

Finally, it is important to address the root causes of poverty, such as corruption and poor governance. These factors can prevent the developing world from achieving its full potential and can lead to a cycle of poverty and underdevelopment.

There is no simple solution to the problem of poverty. However, by working together, we can make progress and create a more just and equitable world for all.

The World Bank has a number of programs and initiatives aimed at reducing poverty in the developing world. These include the International Development Association (IDA), the International Finance Corporation (IFC), and the World Bank Group (WBG).

The IDA provides concessional loans and grants to the poorest countries in the world. The IFC provides investment services and financing to private enterprises in the developing world. The WBG provides a variety of services, including policy advice, technical assistance, and financing.

There are a number of challenges facing the world in the 21st century. One of the most important is the need to address the problem of poverty. This is a complex issue that requires a multi-faceted approach.

By working together, we can make progress and create a more just and equitable world for all. The World Bank is committed to this goal and is working with its partners to address the problem of poverty in the developing world.

The World Bank Group is a unique institution that brings together the resources and expertise of the World Bank, the IDA, and the IFC. This combination of resources allows the WBG to provide a wide range of services to its clients.

The WBG is committed to the goal of reducing poverty in the developing world. We are working with our partners to create a more just and equitable world for all.

