

**Waterfall
Pumps**

Instruction Manual LP Series Air Pump

MODELS: LP20 LP40 LP60 LP100



www.waterfallpumps.co.za

LP Series Air Pump Instructions

1. Normal rated voltage should be 200V~240V to prevent damage to the pump
2. The working environment temperature should remain within 0°C~38°C, with good ventilation to prevent overheating of the pump.
3. Before use, ensure that the unit is correctly earthed. Do not handle the electrical wires with wet hands.
4. The pump unit should be installed at a minimum of 30cm above the water level in a fixed position to prevent possible liquid from flowing back into the pump.
5. If installed outside, the pump should be covered for protection from rain and sunshine.
6. The pump unit should always be kept dry, free of water and oil.
7. Change the air stone regularly as a maintenance item to prevent jamming and counter pressure
8. Change the wear and tear items (Filter sponge, membrane and valve) regularly in order to maintain a good level of air pressure and output
9. When not in use keep the unit dry and dust free in order to maintain its working condition. It is advised to run the unit every 2-3 days for a min of 20 minutes to maintain the running condition of the unit.
10. Always unplug or switch off the unit before carrying out any maintenance
11. If the supply cord is damaged, it must be replaced by the manufacture, a service agent or similarly qualified person in order to prevent any hazard.
12. This appliance is not intended for use by persons (including children) with reduced physical, sensory or mental capabilities, or lack of experience and knowledge, unless they have been given supervision or instruction concerning the use of the appliance by a person responsible for their safety.
13. Children Should be supervised to ensure that they do not play with the appliance.

If Air Volume Decrease....

- check weather the voltage is outside of the specified range
- check wether the air filter or tube or joints are broken or leaking
- check wether the pump valve or diaphragm is broken or stuck
- check for overheating of the unit due to poor air ventilation around the unit.

If the Pump stops working....

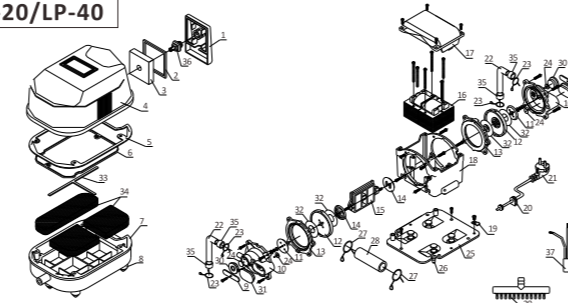
- check if the unit has power, if the cable is damaged or the earth leakage has been tripped
- check if the piston is blocked by build-up or erosion
- check if the rotor is working normally

Plastic and metal air dividers available

MODEL	VOLTAGE	FREQUENCY	POWER	EXHAUST	PRESSURE	MAX. WATER DEPTH	AIR DIVIDER OUTLETS
LP20	100 - 120V 220 - 240V	50/60Hz	17W	22L/Min	0.028MPa	2.2m	6
LP40	100 - 120V 220 - 240V	50/60Hz	35W	50L/Min	0.030MPa	2.8m	12
LP60	100 - 120V 220 - 240V	50/60Hz	50W	70L/Min	0.037MPa	3.5m	14
LP100	100 - 120V 220 - 240V	50/60Hz	100W	140L/Min	0.042MPa	4.0m	33

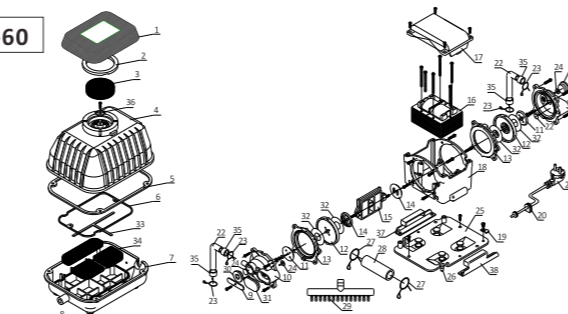
LP STRUCTURE (LP-20/LP-40/LP-60/LP-100)

LP-20/LP-40



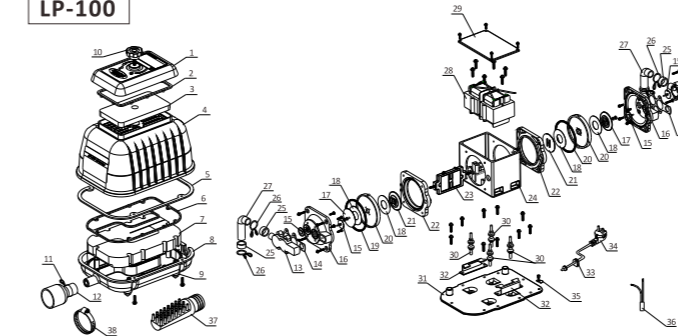
1: Air Filter Cover	14: Diaphragm Back Board	27: Outlet Clip
2: Air Filter Washer	15: Magnet Frame	28: Outlet Tube
3: Air Filter Sponge	16: Motor Coils	29: Valve Air Divider
4: Cover Lid	17: Motor Cover	30: Air Outlet Cover
5: Cover Lid Seal	18: Motor Housing	31: Air Inlet Cover
6: Base Plate Seal	19: Cable Lock	32: Diaphragm Board Washers
7: Pump Base	20: Cable Locator	33: "T" Ring
8: Rubber Foot	21: Plug	34: Muffling Foam
9: Valve Chamber Board	22: Exhaust Tube	35: Exhaust Tube Fixer
10: Valve Chamber	23: Exhaust Clip	36: Filter fixer
11: Diaphragm Front Board	24: Flapper Valve	37: Thermal Protector
12: Diahgram	25: Base Plate	
13: Diaphragm Base Ring	26: Motor Foot	

LP-60



1: Air Filter Cover	14: Diaphragm Back Board	27: Outlet Clip
2: Air Filter Washer	15: Magnet Frame	28: Outlet Tube
3: Air Filter Sponge	16: Motor Coils	29: Valve Air Divider
4: Cover Lid	17: Motor Cover	30: Air Outlet Cover
5: Cover Lid Seal	18: Motor Housing	31: Air Inlet Cover
6: Base Plate Seal	19: Cable Lock	32: Diaphragm Board Washers
7: Pump Base	20: Cable Locator	33: "T" Ring
8: Rubber Foot	21: Plug	34: Muffling Foam
9: Valve Chamber Board	22: Exhaust Tube	35: Exhaust Tube Fixer
10: Valve Chamber	23: Exhaust Clip	36: Filter fixer
11: Diaphragm Front Board	24: Flapper Valve	37: Right limit block
12: Diahgram	25: Base Plate	38: Left limit block
13: Diaphragm Base Ring	26: Motor Foot	

LP-100



1: Air Filter Cover	14: Gasket of air chamber cover	27: Exhaust Tube
2: Air Filter Washer	15: Flapper Valve	28: Motor
3: Air Filter Sponge	16: Valve Chamber	29: Coil Cover
4: Cover Lid	17: Diaphragm Back Board	30: Motor Foot
5: Cover Lid Seal	18: Diaphragm Bard Washers	31: Base Plate
6: Baseplate Seal	19: Sealed ring	32: Right limit block
7: Muffling Foam	20: Diahgram	33: Cable Locator
8: Pump Base	21: Diaphragm Front Board	34: Plug
9: Rubber Foot	22: Diaphragm Base Ring	35: Cable Board
10: the knob of air cleaner	23: Magnet Frame	36: Thermal Protector
11: Outlet Clip	24: Coil Base	37: Valve Air Divider
12: Outlet Tube	25: Exhaust Tube Fixer	38: Air Divider Holder
13: Air chamber cover	26: Outlet Clip	



LP-20 In plastic cover



LP-40 In plastic cover



LP-60 In Aluminum cover



LP-100 In Aluminum cover

Warranty Card

Product _____

From which shop _____

Shop Address _____

Date of purchase _____ / _____ / _____

Shop signature _____

Purchaser signature _____

This product is warranted to be free of defects in manufacturing and material for one (1) year from the date of purchase. Please note that, this warranty does not cover below conditions:

1. Damages resulting from accident, misuse or abuse.
2. Damages not caused by defects of pump.
3. Incidental or consequential damages like any loss of fish, plants or other livestock not as a result of any failure or defect of this product.
4. Damages resulting from self-disassembling or maintenance not in the authorized sites.
5. Damages resulting from natural disasters.
6. Quality Warranty date expired.

**Waterfall
Pumps**

KLB Engineering
South Africa
Tel: +27 (11) 668 1923/4
Cel: +27 (79) 519 1843 / +27 (78) 457 8088
Fax: +27 (11) 668 1925
E-mail: info@klbengineering.com / sales@klbengineering.com
Address: Plot 82, Nootgedacht, Northriding 2162, South Africa
www.waterfallpumps.co.za
www.klbengineering.co.za