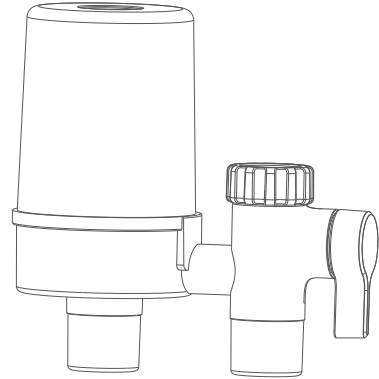




REDRHINO™
FILTRATION

HTF-04 Tap Water Filter Manual



To our Customer:
Thank you for choosing the HTF-04 Tap Filter. In order to use and maintain this product correctly, please read the manual carefully before use.



www.redrhino.co.za

Technical Parameter

Model No.: TF-04

Product Dimension: 133×68×131mm

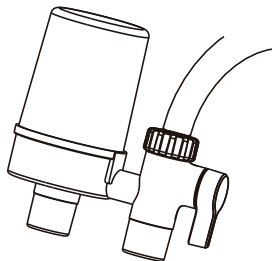
Feed water: Municipal tap water

Operation pressure: 0.1-0.4MPa

Operation temperature: 5-45 °C

Flow rate of pure water: 1.5-2.5L/min

Installation: Install it to faucet

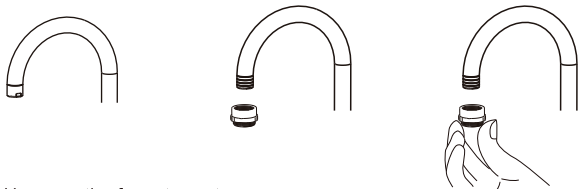


Kindly Reminder:

please read the manual carefully before installation.

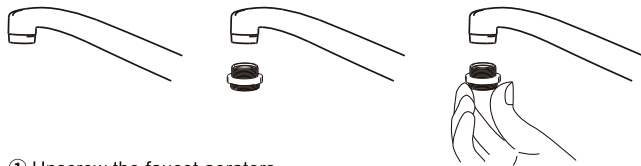
If the filter cannot be connected with faucet directly, please use an adapter between them.

Type A M20 Faucet with male thread



- ① Unscrew the faucet aerators
- ② Connect Hexagon connection to faucet
- ③ Rotate the connector to Hexagon connection

Type B M20/M23 Faucet with female thread



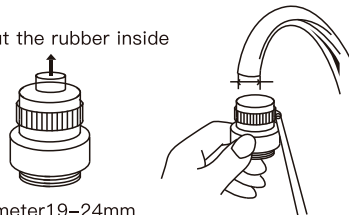
- ① Unscrew the faucet aerators
- ② Connect Hexagon connection to faucet
- ③ Rotate the connector to Hexagon connection

Universal Rubber Connector

Take out the rubber inside



Diameter 15-19mm



Diameter 19-24mm

Other Type Diameter 15-19mm

- ① Unscrew the faucet aerators
- ② Connect Universal Rubber Connector to faucet
- ③ Use a screwdriver to tighten metal clamp on the connector

Other Type Diameter 19-24mm

- ① Unscrew the faucet aerators
- ② Take out the rubber inside and then connect it to faucet
- ③ Use a screwdriver to tighten metal clamp on the connector