



Bitrontix

AM-84

Intense Face Toning & Tightening Wand



Parameter:

Dimension: 160 X 16 X 55 MM

Weight: 98G

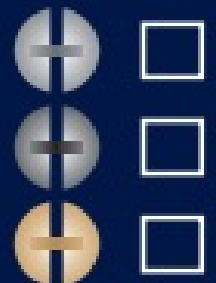
Materials: ALLOY



BITRONTIX

Made in New Zealand

www.bitrontix.com • info@bitrontix.com



HOW TO USE

For best results, use it twice daily (preferable in the morning and in the evening) with each session lasting at least 10 to 15 minutes. Do use Bitrontix massaging gel for the best results. **After massage use Bitrontix serums for faster results.** If you will be consistent, you will start seeing excellent results from week 2 onwards.

Introducing Dark Circle Remover & Cheekbone Toner

Intense Face Toning & Tightening Wand is electrically operated. It requires a single AA Battery and it works on the 3 principles of Push, Knead & Vibrations

PUSH : V- shaped design helps to get close to the skin & provides a push massage.

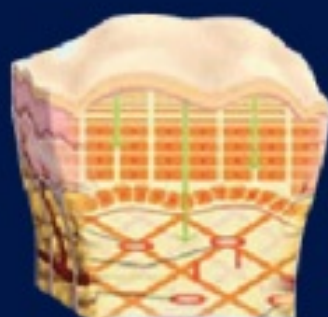
KNEAD : 70° angle of the rollers helps to grab the skin and provide the kneading massage.

VIBRATIONS : 6000 vibrations per minute penetrates deep into the skin to stimulate the inactive cells which promote generation of collagen and helps to reduce lymphotoxin. It enhances skin elasticity and repairs fractured fibrous tissue and ultimately help in getting rid of rigid and stubborn fat.

Working Principle



6000 vibrations per minute reaches deep into the skin to activate the skin cells



Promotes collagen production and excretion of lymphotoxin



Enhances skin elasticity and repair broken tissue fibers

High frequency vibrations massage

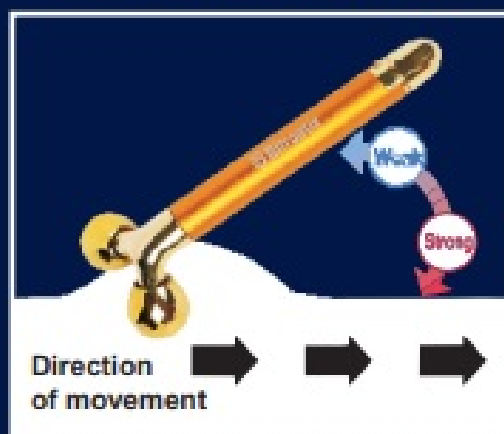
Kneading massage along with high frequency vibrations treatment rejuvenates your skin, improves facial tone and reduces appearance of wrinkles.



Amazing change after using it for 3 months

Rolling Method

The strength in which the roller pulls up your skin can be adjusted by changing the angle at which you hold the handle.



(When Pushing the Rollers Forward)
Gradually raise the end of the handle
to increase the pull of the rollers.
*Lower the handle if you begin to feel pain.

(When Drawing the Rollers Back)
Gradually lower the end of the handle
to increase the pull of the rollers.
*Raise the handle if you begin to feel pain.

6 Benefits:

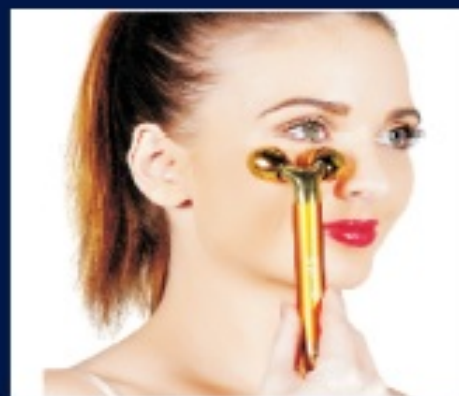


Eye Line Care



Roll back and forth from under your eyes starting from your nose towards temples, as if drawing semicircles.

Under-Eye Care



Roll up and down under your eyes.

Side Eye Care



Roll up and down from the corners of your eyes towards your temples

Forehead Care



Roll up and down from your eyebrows to your hairline.

Cheek Care



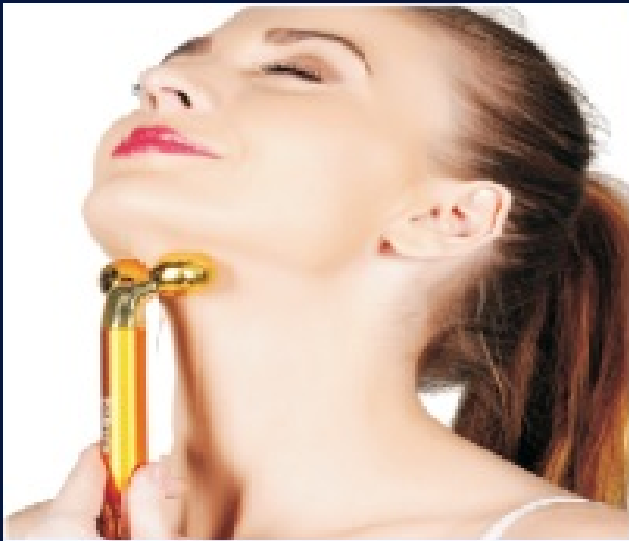
Roll back and forth from the corners of your mouth to your ears.

Jaw Line Care



Roll in upward direction only starting from your chin towards your ears

Double Chin Care



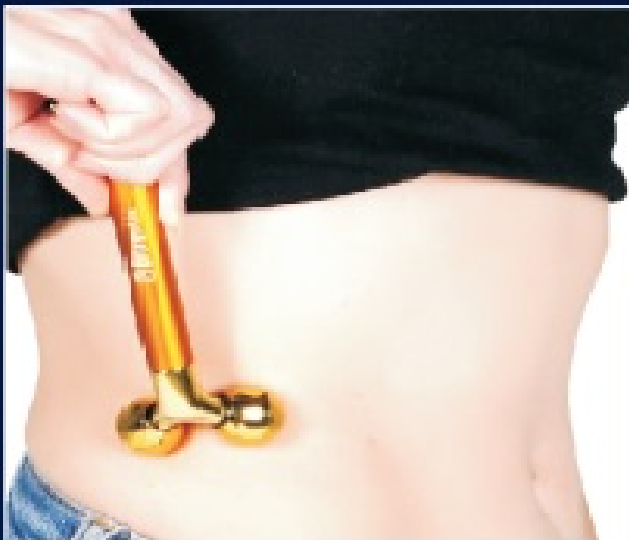
Roll in upward direction only, starting from bottom of your neck towards your chin.

Collarbone Care



Roll in outward direction only, starting from middle of your chest towards your shoulders.

Waist Care



Roll up and down along the sides of your waist.

Waist Care



Roll horizontally on your waist.

Arms Care



Roll up and down on your forearms and biceps starting from your wrist towards your shoulders.

Arms Care



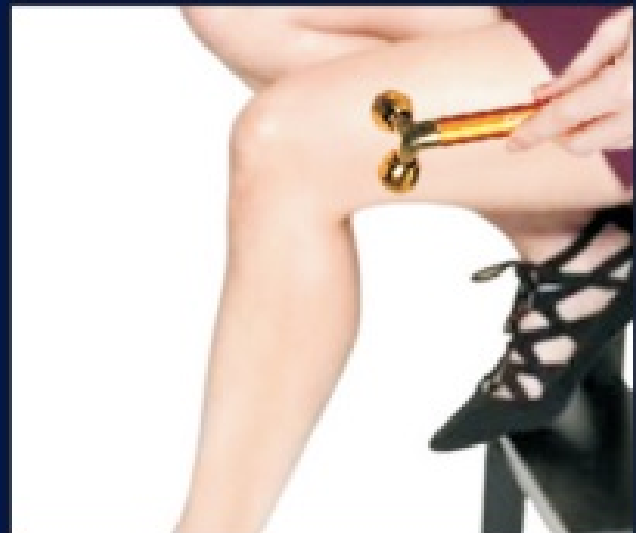
Roll up and down on your triceps

Legs Care



Roll up and down on your calves starting from your wrist ankle towards your knees.

Legs Care



Roll up and down on your thighs

Battery replacement



1. Move the bottom head in anti-clock wise direction to open the head.



2. Remove the bottom head from the roller



3. Insert AA battery with + side of the battery facing towards you as shown in the picture above



4. Close the bottom head by moving it in the clock wise direction.

Note - Please avoid water for a long life of platinum coating. For cleaning, use wet wipes or cotton cloth

**For any queries contact at :
info@bitrontix.com**