

Contact Us

www.LuxatoHearing.com

1+(877) 320 - 6917

info@LuxatoHearing.com

Follow us on Social Media



A/o

LUXATO

Hear *Today.* Hear *Tomorrow.*



LUX16

Owner's User Manual

THANK YOU FOR CHOOSING US
TO FULFILL YOUR HEARING NEEDS.



Enjoy!

Contents

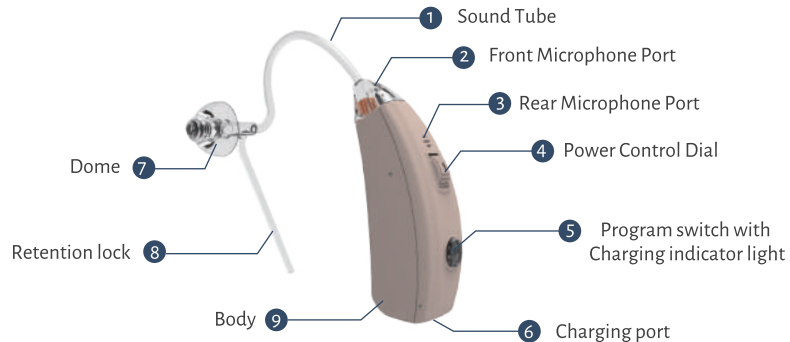
Introduction	1
Components	2
Preparation	3
What's In the Box	3
Operation	4
How to charge your device	4
Assembling	6
Ear Hook Option	8
ON and OFF function	10
Volume Control.....	10
Memory Switch.....	11
Directional microphones	12
Maintenance	13

Congratulations! Welcome to a new low carbon product, a rechargeable hearing amplifier created by LUXATO Hearing. Please read this user manual completely before use. This user manual only applies to the LUX 16 rechargeable personal sound amplifier.

Introduction

The LUX 16 hearing amplifier is an electronic device which amplifies sounds from the surrounding environment. It will help individuals with mild to moderate hearing loss or those who just want to enhance their ability to hear conversations in a noisy environment. This rechargeable hearing device is intended to make daily use more convenient and the elimination of having to change the batteries every week. You can rest assured knowing the lithium polymer battery is eco-friendly and when properly maintained can last a very long time.

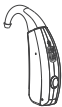
Components



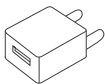
Preparation

What's In the Box

1 x LUX 16



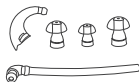
1 x Charger Adaptor



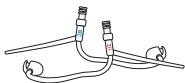
1 x EZcharge®
Micro-USB Cable



1 x Earhook Kit



Two tubes: 1 left, 1 right



1 x M/L
Open-dome



1 x S/M/L
Closed-dome



1 x M/L
Magic-dome



1 x Cleaning wire
& brush



1 x User Manual

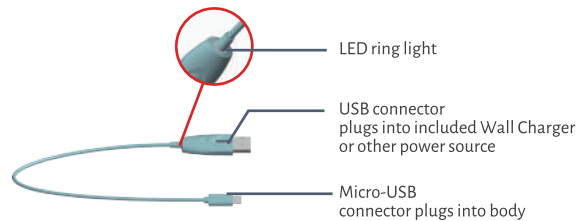
+

1 x Quick Guide

Operation

How to charge your device

Charging the hearing amplifier is similar to charging a cellphone.



The EZCharge cable supplied with the hearing amplifier has on one side the micro-USB connector and this will fit into the button of the hearing amplifier to charge it. On the other end of the cable is the full USB connector and this will plug into the supplied AC power plug connector.

A green light on EZCharge cable indicates use of an acceptable power source.

When the both side connectors of EZCharge cable is connected, the blue LED light on the instrument will glow to indicate that the hearing amplifier is being charged. When the instrument is fully charged, the LED indicator will be green and ready to use.

There is no harm by leaving the hearing amplifier connected to the power source after it is fully charged, since the advanced circuitry regulates and monitors this condition.



Charging



Fully Charged



Error

Warning: Only use the charging kit provided to charge this device. Using any other charging tools may cause the device to melt.

Full charging time: Approximately 2 hours

Duration of use: Approximately 20 Hours of normal use under maximum volume

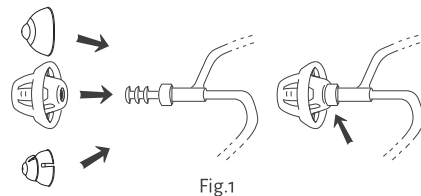
Cycle times: No decline within 500 times

Assembling

Your hearing amplifier consists of three basic parts: The hearing amplifier housing, the sound tube, and the dome.

Selecting a Dome If you have trouble hearing high pitched sounds more than low pitched sounds, begin with the **open dome**.

If you have trouble with both high and low sounds, begin with the **dclosed dome**. For better wearing experience and powerful sound, begin with the Magic dome.

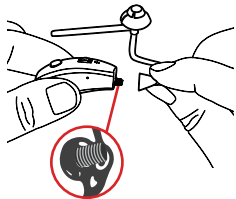


To attach the dome (Fig. 1), push the dome completely over the grooves on the tube to mount it securely.

To attach the sound tube, hold the connector end of the sound tube in one hand and the hearing amplifier in the other, and twist the tubing into the hearing aid clockwise until properly secured.

Note: Lettering on Sound Tube indicate which ear the tube will fit.

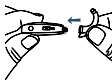
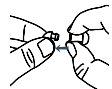
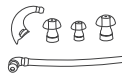
RED lettering is for right ear
BLUE lettering is for left ears



Ear Hook Option

Attaching earhook parts

1. Choose the suitable dome and then push the dome completely over the grooves on the tube to mount it securely.
2. Mount the ear hook to the hearing amplifier housing by twisting it on until the two flat surfaces are flush together.
3. Position the hearing amplifier with the attached earhook over the ear as shown. Next, insert the dome attached to the tubing comfortably into the ear canal and align the tubing towards the end of the ear as shown in the picture.
4. Mark the location where the end of the ear hook is on the tubing.
5. Remove the hearing amplifier and the tubing from your ear and cut the tubing 0.2 inches (3mm) above the mark on the tube.



1. Place the hearing amplifier over the top of your ear.
2. Hold the tube close to the dome with your thumb and forefinger. Insert the dome with gentle pressure into your ear canal until the tube sits flush against the side of the face. The dome should fit in the ear canal snug, but not tight.
3. Position the retention lock into the outer bowl of the ear above the ear lobe using your index



ON and OFF function

Use the volume control knob to turn the hearing amplifier on and off. To turn the hearing amplifier on, rotate to any volume number will turn on the device. Rotate to zero will turn off the device.

Volume Control

To adjust the volume, rotate the Volume Control Dial up (+) for more volume, and down (-) for less volume.

Note: It is recommended to start the volume on the lowest setting. Adjust the volume gradually according to your own hearing requirements, but not so loud as to cause feedback.



Function	Indication	Change
ON-OFF	To "0"	Turn off
Volume control	1-2-3-4	Volume increase
	4-3-2-1	Volume decrease
Memory switch	1-2-3-4 Beeps	Change program

Memory Switch

Your hearing amplifier can be programmed with up to 4 different listening programs. When the hearing amplifier is turned on, it will automatically be in program 1.

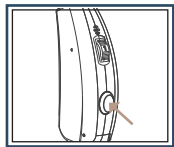
The additional settings which are pre-programmed for your specific needs are accessed by the memory switch. Each time you press the memory switch, the hearing amplifier will move to the next program. The sequence is 1, 2, 3, and 4.

Program 1: Single microphone mode

Program 2: Dual microphone mode

Program 3: Single microphone TV mode

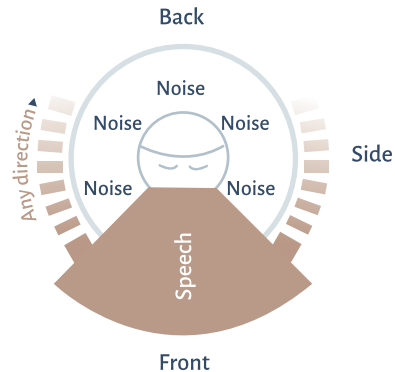
Program 4: Dual microphone OUTDOOR mode



Note: The programs are preset by the manufacturer.

Directional microphones

The LUX 16 is equipped with the adaptive directional microphones function. Adaptive directional microphones can provide improved speech recognition in noise.



Maintenance

Troubleshooting

1. How to charge the device?

Connect the device with the Micro-USB cable provided to the AC adapter and plug into an outlet.

2. How long does it take for the device to be fully charged?

It takes approximately 2 hours to fully charge this device.

3. How long is the working time of the device after fully charged?

The device can work for about 20 hours after fully charged under quiet environments in loud surroundings, it takes more power for the hearing amplifier to filter out sounds and thus may have a shorter usage time, but it will not diminish drastically.

4. Why the device is not working during the charging phase?

The device will be turned off automatically to make for a faster charging time. It is recommended that you turn off the hearing amplifier when it is not in use to prevent the battery from discharging totally and to prevent any feedback noise.

5. How to know when the hearing device is fully charged?

When the device starts to charge, the LED indicator light will glow blue and when the device is fully charged, the light will turn green.

6. How to maintain the hearing amplifier charging system?

To get the maximum use from the internal battery, it is recommended that the hearing amplifier is charged daily which is typically overnight. It is also recommended that if the hearing amplifier is not used for an extended period throughout the day, that the hearing amplifier is turned off or plug the hearing amplifier into the USB cable and power source.

7. Can the user replace the battery?

The user cannot replace the battery since it is sealed inside the case. If the hearing amplifier needs service, please call us at (877) 320-6917.

8. When do I use the Earhook?

Your hearing device comes assembled with the standard thin tube and dome. If you notice your hearing is not loud enough using the thin tube, you can untwist the thin tube from the hearing device and begin using your earhook. The earhook has a thicker sound tube to allow more sound waves to enter.

Cleaning

Keep the hearing amplifier clean and dry. Please use a soft cloth to clean and remove any body oil or moisture from the shell of the hearing instrument. If the hearing device is often in a moist environment or subject to a lot of perspiration it is recommended to put the hearing instruments that are turned off into a dry box at least once a week.

CALL US AT (877) 320-6917 TO ORDER YOUR DRY BOX FOR YOUR HEARING.

Do not use water or other fluids to clean the hearing amplifier.

There should always be care in handling the hearing amplifier to prevent them from falling onto any hard surfaces, such as counter top, table or floor. Do not leave your hearing amplifier in the direct sun or in areas where the temperature can rise over 60°C / 140°F for extended periods. Avoid cleaning with any harsh chemicals or strong cleaners.

Stop Using Hearing Amplifiers and Consult a Physician If:

- Hearing in one or both ears worsens.
- Your ear becomes occluded with excessive ear wax.
- Hearing does not improve while using the provided hearing aid.
- You develop an infection of your ear or ear canal.
- Skin irritation develops in or around your ear canal.

Precautions

For customers with ear infection, it is suggested not to wear hearing amplifier until cured or by following a doctor's advice. Please consult with your hearing healthcare professional first if you have any questions about your hearing or your hearing amplifier.

THE MANUFACTURER RESERVES THE RIGHT TO MODIFY THE TECHNICAL SPECIFICATIONS OF THE PRODUCT.

