

编号	DAT18R-ML-86
版次	A

型号 DAT18R

名称 T18R-86 状态变速器图解目录

Model DAT18R

Name T18R-86 Status Transmission Illustrated Catalog

哈尔滨东安汽车动力股份有限公司

编制	校对	审核	审定	研究院	批准

目 录

1 适用范围-----	4
2 具体内容-----	4
2.1 变速器壳体及成附件部分-----	4
2.2 变速器传动部分-----	6
2.3 离合器操纵机构部分-----	8
2.4 换档操纵及执行机构部分-----	9

Table of contents

1 Scope of application-----	4
2 Specific content-----	4
2.1 Transmission housing and accessories-----	4
2.2 Transmission transmission part-----	6
2.3 Clutch operating mechanism part-----	8
2.4 Shift control and actuator part-----	9

更改标记

更改单号

更改者

更改日期

1、适用范围 Scope of application

本文件规定了提供东风途逸项目用 T18R-1700950-86 状态变速器部分图解。

本文件适用于售后备件入厂验收参考。

本文件与变速器装机状态同步进行更新。

This document stipulates the provision of partial diagrams of the T18R-1700950-86 state transmission for the Dongfeng Tuyi project.

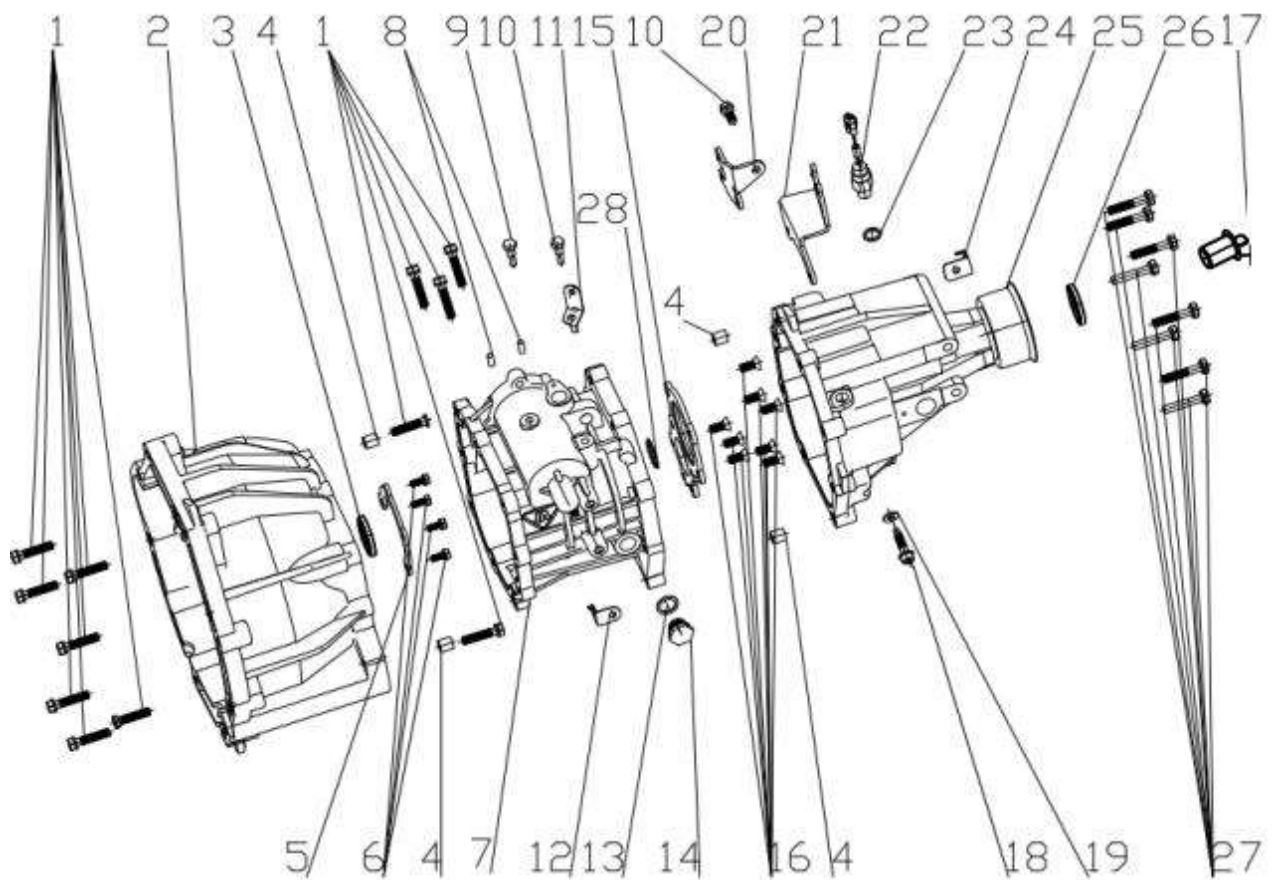
This document is suitable for reference for factory acceptance of after-sales spare parts.

This document is updated synchronously with the transmission installation status.

2、具体内容 Specific content

2.1 变速器壳体及成附件部分

2.1 Transmission Housing And Attached Parts



更改标记

更改单号

更改者

更改日期

2.1 变速器壳体及成附件部分

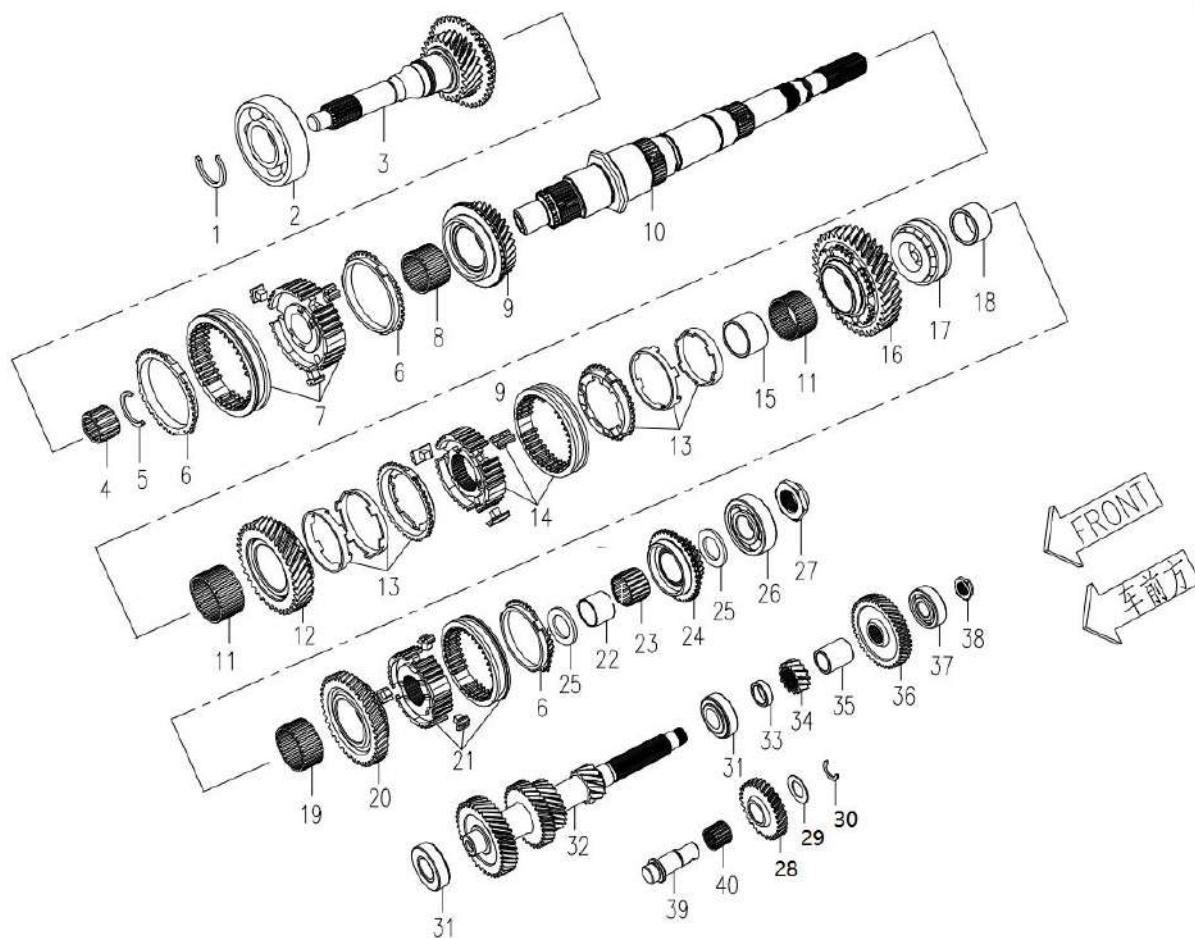
2.1 Transmission Housing And Attached Parts

图位号	零配件号 (备件号)	零配件名称	装配级别	数量
Item No.	Part No. (Spare Part No.)	Description.	Assemble distinction	Qty
1	T18R-1700040-03	螺栓 (Bolt)	1	12
2	T18R-1701001-09	前机匣壳体 (Clutch Housing)	1	1
3	T18R-1701880-03/05	输入轴油封总成 (Seal, Input Shaft Oil)	1	1
4	BS10-1700012	定位套 (Set, Orientation)	1	4
5	T18R-1701017-03	前机匣轴承压板 (Plate-bearing In Clutchhousing)	1	1
6	GB/T 9074.15-1988 M6×16	螺栓 (Bolt)	1	4
7	T18R-1701002-03	中机匣壳体 (Transmission Case)	1	1
8	GB 4661-89 6×12IIIb	圆柱滚子 (Cylindrical Roller)	1	2
9	T18R-1702072-03	倒档锁块限位螺钉 (Shifting Lock Block Set Screw)	1	1
10	GB 9074.15-88 M8×20	螺栓 (Bolt)	1	2
11	515L-1000150	线束支架 (Bracket, Wiring Harness)	1	1
12	T18R-1700002-07	线束支架 (Bracket, Wiring Harness)	1	1
13	T18R-1700015-03	垫片 (Washer)	1	1
14	T18R-1701206-04	注油螺堵 (Bolt Oiling)	1	1
15	T18R-1701018-03	中机匣盖板 (Cap Middle Shaft Bearing)	1	1
16	GB/T 2673 M8×20	螺栓 (Bolt)	1	8
17	T18R-1700001-03	封油盖 (Oil Seal Cap)	1	1
18	T18R-1700013-03	倒档螺栓 (Bolt, Reverse Gear Shift)	1	1
19	BS10-4-1700014	垫片 (Washer)	1	1
20	T18R-1700032-38	换档支架 (Bracket Pull Wire)	1	1
21	T18R-1700033-38	选档支架 (Bracket Pull Wire)	1	1
22	T18R-3729950-11	倒车灯开关总成 (Sitch Assy, Back Up)	1	1
23	T18R-1700014-03	倒车灯垫片 (Reversing Lamp Gasket)	1	1
24	T18R-1700002-03	线束支架 (Bracket, Wiring Harness)	1	1
25	T18R-1701820-07	后机匣壳体总成 (Extension Housing)	1	1
26	T18R-1701810-03/05	输出轴油封总成 (Seal, Input Shaft Oil)	1	1
27	T18R-1700042-03	螺栓 (Bolt)	1	8
28	T18R-1700022-03	中间轴调整垫 (Cone Bearing Adjustment Gasket)	1	1

更改标记		更改单号		更改者		更改日期	
------	--	------	--	-----	--	------	--

2.2 变速器传动部分

2.2 Driving System Of Transmission



图位号	零配件号 (备件号)	零配件名称	装配级别	数量
Item No.	Part No. (Spare Part No.)	Description.	Assemble distinction	Qty
1	T18R-1701088-03	卡圈 (Closing Ring)	1	1
2	TM63/32-2RS	轴承 (Bearing, Input Shaft)	1	1
3	T19R-1701640-03	输入轴分总成 (Shaft Transmission Input)	1	1
4	K20×28×20	滚针轴承 (Bearing)	1	1
5	T18R-1701072-03	卡圈 (Closing Ring)	1	1
6	T18R-1701015-01/03	高速同步环 (Ring, High Speed Sync)	1	3
7	T18R-1701850-03	高速同步器总成 (Assembly, High Speed Sync)	1	1
8	K35×40×25.5TN/ K35×40×25.5DTN	滚针轴承 (Bearing)	1	1
9	T18R-1701630-06	三档从动齿轮总成 (Gear, Countershaft 3rd)	1	1
10	T18R-1701027-03	输出轴 (Shaft Transmission Output)	1	1
11	K42×47×26.8TN	滚针轴承 (Bearing)	1	2

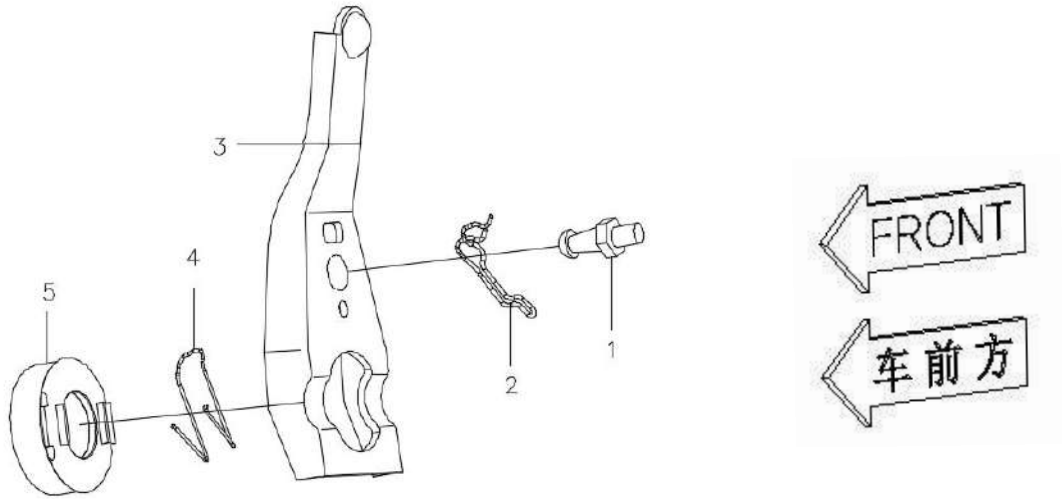
更改标记		更改单号		更改者		更改日期	
------	--	------	--	-----	--	------	--

图位号	零配件号 (备件号)	零配件名称	装配级别	数量
Item No.	Part No. (Spare Part No.)	Description.	Assemble distinction	Qty
12	T18R-1701620-12	二档从动齿轮总成 (Gear, Countershaft 2nd)	1	1
13	T18R-1701790-09	低速三锥同步环总成 (Comp Of Ring 1st-2nd Gear Three Cone Sync)	1	2
14	T18R-1701840-09	低速同步器总成 (Assembly, Low Speed Sync)	1	1
15	T18R-1701073-03	轴承衬套 (Bush Middleshaft Bearing)	1	1
16	T18R-1701610-12	一档从动齿轮总成 (Gear, Countershaft 1st)	1	1
17	DAC357235/20NRJ	轴承 (Bearing)	1	1
18	T18R-1701074-03	轴承衬套 (Bush Middleshaft Bearing)	1	1
19	K43×48×23ZWTN	滚针轴承 (Bearing)	1	1
20	T18R-1701660-03	倒档从动齿轮总成 (Gear, Countershaft Rev)	1	1
21	T18R-1701860-03/05	倒五档同步器总成 (Assembly, 5th/Rev Speed Sync)	1	1
22	T18R-1701075-06	轴承衬套 (Bush Middleshaft Bearing)	1	1
23	K32×36×24.5DTN	滚针轴承 (Bearing)	1	1
24	T18R-1701650-06	五档从动齿轮总成 (Gear, Countershaft 5th)	1	1
25	T18R-1701071-03	垫片 (Washer)	1	2
26	TM63/28	轴承 (Bearing)	1	1
27	T18R-1701058-03	锁紧螺母 (Locknut)	1	1
28	T18R-1701032-03	倒档中间齿轮 (Gear comp, reverse idler)	1	1
29	T18R-1701085-03	垫片 (Washer)	1	1
30	T18R-1701086-03	卡圈 (Closing ring)	1	1
31	30205	轴承 (Bearing)	1	2
32	T18R-1701710-12	中间轴分总成 (Shaft, Transmission Counter)	1	1
33	T18R-1701082-03	间隔套 (Spacer)	1	1
34	T18R-1701031-03	倒档主动齿轮 (Gear, Input Shaft Rev)	1	1
35	T18R-1701083-03	间隔套 (Spacer)	1	1
36	T18R-1701059-05	五档主动齿轮 (Gear, Input Shaft 5th)	1	1
37	TM6304E	轴承 (Bearing)	1	1
38	T18R-1701057-03	锁紧螺母 (Locknut)	1	1
39	T18R-1701069-03	倒档中间齿轮轴 (Shaft, t/m Rev Gear)	1	1
40	K22×27×24	滚针轴承 (Bearing)	1	1

更改标记		更改单号		更改者		更改日期	
------	--	------	--	-----	--	------	--

2.3 离合器操纵机构部分

2.3 Clutch Control Mechanism



2.3 离合器操纵机构部分

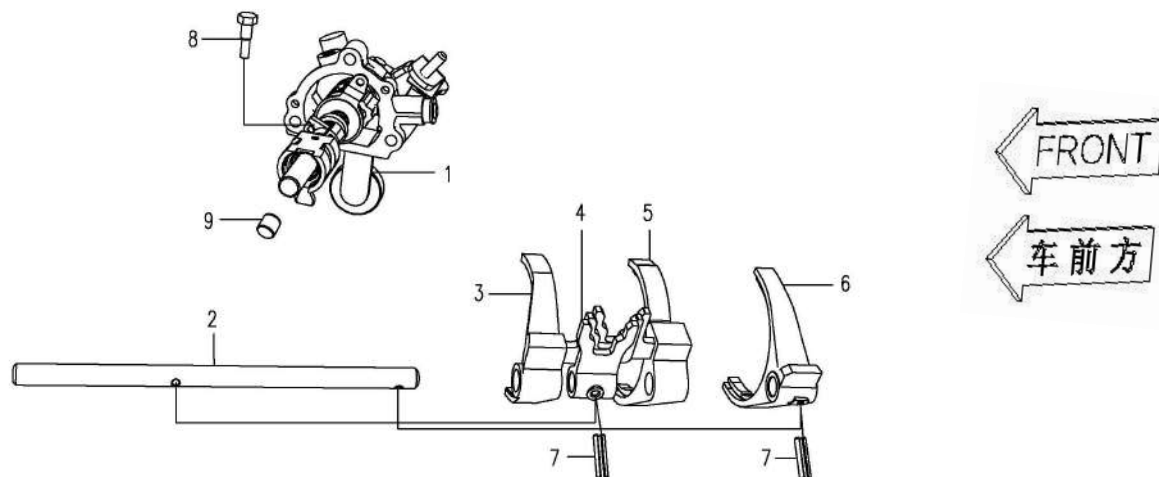
2.3 Clutch Control Mechanism

图位号 Item No.	零配件号 (备件号) Part No. (Spare Part No.)	零配件名称 Description.	装配级别 Assemble distinction	数量 Qty
1	T13R-1601024	螺柱 (Bolt, Poling)	1	1
2	BS14R-1601026	支臂夹子 (Arm Clip)	1	1
3	T18R-1601035-03	分离支臂 (Arm, Clutch Release)	1	1
4	BS14R-1601025	轴承夹子 (Bearing Clip)	1	1
5	T13R-1601910	分离轴承总成 (Bearing, Clutch Release)	1	1

更改标记		更改单号		更改者		更改日期	
------	--	------	--	-----	--	------	--

2.4 换档操纵及执行机构部分

2.4 Shift Control And Actuator Section



2.4 换档操纵及执行机构部分

2.4 Shift Control And Actuator Section

图位号 Item No.	零配件号 (备件号) Part No. (Spare Part No.)	零配件名称 Description.	装配级别 Assemble distinction	数量 Qty
1	T18R-1702950-38	换档选择轴导向壳体总成 (Shift Select Shaft Guide Shell Assembly)	1	1
2	T18R-1702032-03	倒五档拨叉轴 (Shaft, 5th & Rev Gear Shift)	1	1
3	T18R-1702820-03	三四档拨叉总成 (Fork, High Speed Gear Shift)	1	1
4	T18R-1702033-03	倒五档换档臂 (Yoke, 5th & Reverse Gear Shift)	1	1
5	T18R-1702810-05	一二档拨叉总成 (Fork, Low Speed Gear Shift)	1	1
6	T18R-1702031-03	倒五档拨叉 (Pour Five Shift Fork)	1	1
7	GB/T 879.1 5×22	弹性销 (Pin, Gear Shift Shaft Inner)	1	2
8	T18R-1702072-03	倒档锁块限位螺钉 (Shifting Lock Block Set Screw)	1	1
9	T18R-1702002-03	换档轴衬套 (Shift Shaft Bushing)	1	1

更改标记		更改单号		更改者		更改日期	
------	--	------	--	-----	--	------	--